

## report to Board of Trustees

### 2024-25 Modular Classroom Program

Date	October 24, 2023
Meeting Type	Regular Meeting, Public Agenda
To	Board of Trustees
From	Gary Strother Chief Superintendent of Schools
Purpose	Decision
Originator	Dany Breton, Superintendent, Facilities and Environmental Services
Governance Policy Reference	Operational Expectations OE-7: Communication With and Support for the Board OE-8: Communicating and Engaging With the Public OE-9: Facilities
Resource Person(s)	Trevor Fenton, Director, Facility Projects Catherine Ford, Director Planning Sony Brar, Manager, Planning

#### 1 | Recommendations

---

It is recommended:

- THAT the Board of Trustees approves the use of the revised Category A Enrolment, Utilization, Projection for the Modular Classroom Ranking Criteria, contained in **(Attachment I)** to this report, for the purpose of the 2024-25 Modular Classroom Program.
- THAT the Board of Trustees approves the 2024-25 Modular Classroom Program submission.



## 2 | Issue

---

The provincial government requires a prioritized list of modular classroom requests from all school boards annually.

## 3 | Background

---

Modular classrooms can make an important contribution to bettering the student learning experience by relieving accommodation pressures within a school. In May 2014, the CBE undertook a public engagement to solicit input on considerations for prioritizing modular classroom requests. Informed by this feedback, a set of filters and ranking criteria were developed and approved by the Board of Trustees in October 2014. These consist of the Eligibility Filters for Modular Classrooms (**Attachment II**) and the Modular Classroom Ranking Criteria (**Attachment III**).

For the 2023-24 school year, the province approved the relocation of 5 modular classrooms and the disposition of 11 modular classrooms (15 were requested). No new modular units were requested.

The pressure on the CBE system caused by exceptional enrolment growth over the past two years has been a key consideration in this year's proposed submission. This pressure is further compounded by the fact that only one new school is currently under construction and the number of years it takes for new schools to be approved and constructed. The result is the largest request for modulars in over a decade submitted by the CBE.

In consideration of the record enrolment growth experienced during the 2022-23 and 2023-24 school years, a revision to the "Category A" Enrolment, Utilization, Projection gradation is proposed as being essential for the 2024-25 Modular Classroom Program (**Attachment I**). The primary driver for this requirement is that all schools considered this year have a projected utilization rate of above 95%, with most being above 100%. Under these circumstances, most schools received maximum points under the old matrix, which did not help identify the highest need schools. The new matrix proposed for the 2024-25 submission allows for greater granularity in differentiating between schools when most of those being considered are experiencing utilization rates above the 100% utilization mark. The following table shows the matrix used for this year:

<b>CATEGORY A</b>	
Enrolment, Utilization, Projection	
Strength of enrolment and utilization into the future (Projected 5 Year Utilization)	
Projected Utilization is less than 89%	0
Projected Utilization is between 90 to 99%	5
Projected Utilization is between 100 to 104%	10
Projected Utilization is between 105 to 109%	15
Projected Utilization is between 110 to 119%	20
Projected Utilization is greater than 120%	25

Relocation or disposition of modular classrooms is dependent upon provincial approval and funding. In recent years, the province has only approved requests for either new modular classrooms or the relocation of modular classrooms for schools with a utilization rate that exceeds 100%.

The COVID-19 pandemic had a significant impact on the construction sector, with the procurement of new modular units continuing to be impacted by these challenges. For this reason, existing CBE modulars that can be relocated have been identified for the highest priority needs.

## 4 | Analysis

---

Considering current constraints, it is recommended that some existing modular units be relocated to where there is a need for increased capacity at schools, in addition to new school requests. The analysis below recommends the following submission for the 2024-25 Modular Classroom Program:

- 1 modular unit disposition request (increasing capacity of 1 school);
- 12 modular unit relocation requests (increasing capacity 3 schools); and
- 68 new modular unit requests (increasing capacity 15 schools).

### Modular Classroom Additions – Eligible Schools

A Modular Classroom Eligibility Filter Review was conducted using opening day August 31, 2023 student enrolment data. From this, a list of all schools over 90% utilization (based on provincial capacity) was assembled (**Attachment IV**).

The following 39 schools had a utilization of 90% or higher and met the filter criteria to be eligible for points ranking analysis:

- Prairie Sky School
- John G. Diefenbaker High School
- Nelson Mandela High School
- Lester B. Pearson High School
- Sir Winston Churchill High
- Western Canada High School
- Mahogany School
- Peter Lougheed School
- Hugh A Bennett School
- Saddle Ridge School
- Grant MacEwan School
- Kenneth D. Taylor School
- Connaught School
- Mount Royal School
- Joane Cardinal-Schubert High School
- Dr. E.P. Scarlett High School

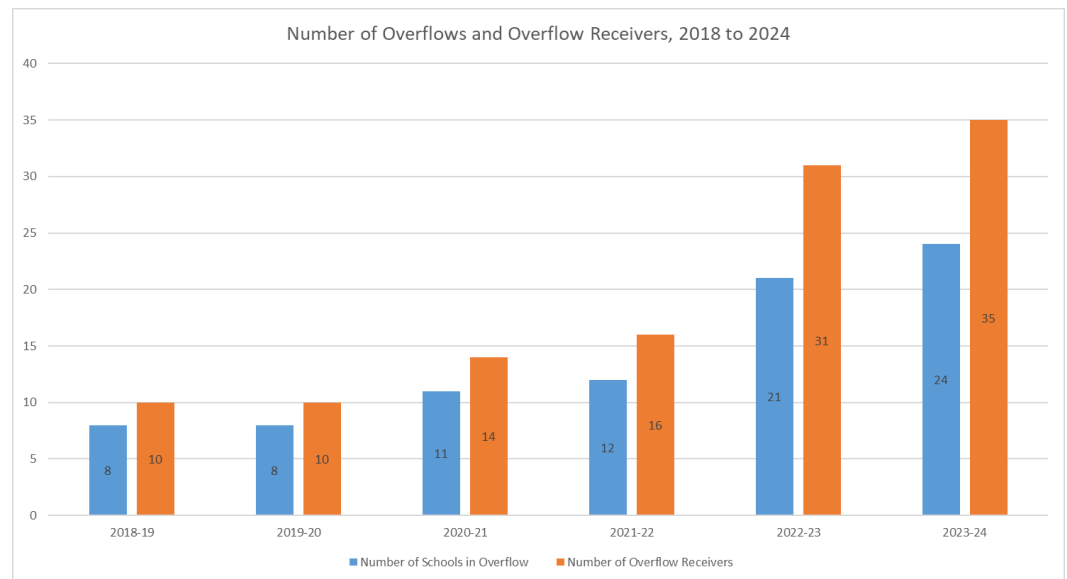
- Buffalo Rubbing Stone School
- O.S. Geiger School
- Colonel Irvine School
- Balmoral School
- Ernest Manning High School
- Dr. Gordon Higgins School
- Terry Fox School
- Colonel Macleod School
- Dr. Gladys McKelvie Egbert School
- Coventry Hills School
- Sir Wilfrid Laurier School
- Forest Lawn High School
- Falconridge School
- Stanley Jones School
- Annie Gale School
- Clarence Sansom School
- Northern Lights School
- Manmeet S. Bhullar School
- North Trail High School
- Captain Nichola Goddard
- Dr. Martha Cohen School
- Ted Harrison School
- James Fowler High School

The Modular Classroom Points Assignment (**Attachment V**) summarizes the points assignments for the schools listed above. As noted previously, the “Category A Enrolment, Utilization, Projection” utilization rate groupings are proposed to be adjusted upward exceptionally this year due to the large number of schools with utilization rates over 100%.

Several factors that affect the viability and cost of modular unit additions were considered in conjunction with the points assignment to arrive at the list of schools recommended for additional modular classrooms (new or relocated units). Considerations include:

- Schools above 100% utilization or in overflow;
- Firefighting access to the proposed location;
- Washroom facilities at the proposed receiving site;
- Number of parking stalls at the proposed receiving site;
- Access to existing garbage enclosures and parking areas;
- Access for modular delivery;
- Buffer zone(s) to existing City or CBE playfields; and
- The presence of connection corridors used to tie new modular classrooms into existing schools.

The number of schools reaching capacity increased during the 2022-23 school year and has continued into the 2023-24 school year. Record enrolment growth, largely due to new migrants to Calgary, both interprovincial and international, continues to pressure the system. This has caused the number of schools in overflow status to rise. Below is a 5-year trend of schools in overflow. It shows the number of schools in an overflow status, as well as the number of schools receiving overflowed students. We expect this trend to continue without new school construction.



Graph: Number of overflow schools and schools that receive students. The 2023-2024 data shown above is as of September 27, 2023.

While the whole system has felt the continued growth of the city, there are certain areas that are feeling particularly strained. The table below shows the year-over-year opening day growth, by Area. Areas 3, 4, and 5 saw the largest growth between opening day 2022 and 2023. Table 1 below also shows the number of schools currently being overflowed, highlighting capacity concerns in Areas 4 and 7, in particular.

Area	Opening Day 2022	Opening Day 2023	Growth	# of Schools in Overflow
1	18845	19481	636	3
2	17788	18282	494	2
3	14774	16547	1773	0
4	19095	20171	1076	9
5	24121	25586	1465	4
6	17292	18159	867	0
7	18710	19704	994	7
	<b>130625</b>	<b>137930</b>	<b>7305</b>	<b>25</b>

Table: Year-over-Year Comparison – Opening Day Sept 29<sup>th</sup>, 2022 and 2023.

### Modular Classroom Additions – Recommended Schools for Unit Relocation

Following review of the school sites and consideration of all factors, the relocation of existing modular units to the following locations is recommended:

School	Reasoning
Prairie Sky School	Opening Day utilization for this school was 110%. This K-9 Regular Program school opened in April 2023 and within 1.5 months it was determined that not all students in Skyview Ranch would be able to attend the school. Prairie Sky School is capped with students being overflowed to three schools, two for K-6 students and one for GR7-9. Without the overflows in place, this school would be at a utilization rate of 135%. Four modular units will be requested under the relocation process.
Sir Winston Churchill High School	Opening Day utilization for this school was 123%. This school is currently capped with students being overflowed to William Aberhart High School. Without the overflows in place, this school would be at a utilization rate of 132%. Six modular units will be requested under the relocation process.
Connaught School	Opening Day utilization for this school was 108%. This school is currently capped with students being overflowed to three separate elementary schools. Without the overflows in place, this school would be at a utilization rate of 155%. Two modular units will be requested under the relocation process. An additional four will be requested as new units.

The Modular Classrooms Recommended for Unit Relocation (**Attachment VI**) summarizes the justification for the schools listed above, including the number of units requested and projected utilization rates. In total we are requesting 12 units to be relocated, for a total of 300 student spaces.

### Modular Classroom Additions – Recommended Schools for New Units

Following review of the school sites and consideration of all factors, obtaining new modular units for the following locations is recommended:

School	Reasoning
Connaught School	As discussed previously, only two units are available through the Unit Relocation process above. Since a total of six units are required in total, four new units are also required. This will help ease the current utilization rate of 155% and likely reduce the number of overflows needed. As noted above, four new units will be requested in addition to the two relocated units for a total of 6 units.
Nelson Mandela High School	Opening Day utilization for this school was 122%. This school is currently capped with students being overflowed to James Fowler High School. Continued growth of communities in the NE will continue to put strain on this school. Without the overflows in place, this school would be at a utilization rate of 131%. Six new units will be requested.
Peter Lougheed School	Opening Day utilization for this school was 101%. This school is currently capped with students being overflowed to two schools, one for GR5-6 and one for GR7-9. Without the overflows in place, this school would be at a utilization rate of 121%. Four new units will be requested.

Mahogany School	Opening Day utilization for this school was 123%. This school is currently capped with students being overflowed to Bayside School. Without the overflows in place, this school would be at a utilization rate of 142%. Four new units will be requested.
Grant MacEwan School	Opening Day utilization for this school was 118%. This school is currently capped with students being overflowed to O.S. Geiger School. Without the overflows in place, this school would be at a utilization rate of 135%. Six new units will be requested.
Hugh A. Bennett School	Opening Day utilization for this school was 103%. This school is currently capped with students being overflowed to Pineridge School. This school is currently an overflow receiver for Saddle Ridge School, which was removed from the modular request list due to high costs. Adding modular units to Hugh A. Bennett School would benefit both Hugh A. Bennett and Saddle Ridge Schools due to their close proximity. Four new units will be requested.
Colonel Irvine School	Opening Day utilization for this school was 105% and has a projected 3-yr utilization rate of 109%. It is the designated school for Livingston, which continues to grow, as well as being a dual track school for Mandarin. Four new units will be requested.
Joane Cardinal-Schubert High School	Opening Day utilization for this school was 127% and has a projected 3-yr utilization rate of 123%. It is the designated school for Mahogany and Seton, which continue to grow. Starting next year, New Brighton students will be designated to Lord Beaverbrook HS, which will help lower utilization rates. Six new units will be requested.
Dr. E.P. Scarlett High School	Opening Day utilization for this school was 116%. It has a projected 3-yr utilization rate of 100% but continues to see growth from the surrounding / developing communities. Six new units will be requested.
Lester B. Pearson High School	Opening Day utilization for this school was 113% and has a projected 3-yr utilization rate of 110%. Six new units will be requested.
Buffalo Rubbing Stone School	Opening Day utilization for this school was 109% and has a projected 3-yr utilization rate of 108%. The utilization at this school is trending down, has an established home area, and no new & developing communities. Two new units will be requested.
John G. Diefenbaker High School	Opening Day utilization for this school was 108% and has a projected 3-yr utilization rate of 111%. A modernization project has been approved for this school, but it is anticipated that more space will be needed. Six new units will be requested.
Ernest Manning High School	Opening Day utilization for this school was 107% and has a projected 3-yr utilization rate of 100%. Six new units will be requested.
Kenneth D. Taylor School	Opening Day utilization for this school was 107%. This school is currently capped with students being overflowed to Cambrian Heights School. Without the overflow in place, this school would be at a utilization rate of 121%. Of note, there is a middle school approved for construction and a second elementary school ranked #1 on the CBE 2024-2027 3 Year School Capital Plan for this community, which will favourably impact utilization rates at Kenneth D Taylor. Two new units will be requested.
Dr. Gladys McKelvie Egbert School	Opening Day utilization for this school was 101% and has a projected 3-yr utilization rate of 103%. Two new units will be requested.

The Modular Classrooms Recommended for New Units (**Attachment VII**) summarizes the justification for the schools listed above, including the number of

units requested and projected utilization rates. In total, 68 new units are proposed to be requested, for a total increase of 1700 student spaces.

### Schools Excluded from the List of Modular Unit Addition Requests

Following review of the school sites and consideration of all factors, the addition of modular units at the following schools is not recommended:

School	Reasoning
Western Canada High School	The Opening Day utilization for this school was 111%. The school would lose a significant amount of field space, which has a negative impact on school programming. An accommodation plan for the school is presently being developed.
Dr. Gordon Higgins School	The Opening Day utilization for this school was 109%. This school is an overflow receiver and high enrolment would likely end with addition of modulars at Prairie Sky School.
Balmoral School	The Opening Day utilization for this school was 106%. This school operates as a TLC program, which could be capped if needed.
O. S. Geiger School	The Opening Day utilization for this school was 105%. This school is an overflow receiver and high enrolment would likely end with addition of modulars at Grant MacEwan School.
Saddle Ridge School	The Opening Day utilization for this school was 102%, with student being overflowed to Hugh A Bennett School. The cost to add modular units to this school is prohibitive. As such, four units at the neighbouring school, Hugh A. Bennett School, are proposed to be requested to alleviate capacity concerns in the Saddle Ridge community.
Colonel Macleod School	The Opening Day utilization for this school was 100%. The school would lose a significant amount of field space, which has a negative impact on school programming. The school is dual-track TLC with a majority of the students attending the TLC program. Enrolment in alternative programs could be managed through a cap in enrolment and the CBE lottery process.
Mount Royal School	The Opening Day utilization for this school was 100%, with overflows in place to A.E. Cross and Vincent Massey schools. The school would lose a significant amount of field space, which has a negative impact on school programming. Overflows will be maintained while a longer-term accommodation plan is being explored.
Annie Gale School	The Opening Day utilization for this school was below 100% and as such no modular units are requested this year.
Manmeet Singh Bhullar School	The Opening Day utilization for this school was below 100% and as such no modular units are requested this year.
Clarence Sansom School	The Opening Day utilization for this school was below 100% and as such no modular units are requested this year.
Forest Lawn High School	The Opening Day utilization for this school was below 100% and as such no modular units are requested this year.
Northern Lights School	The Opening Day utilization for this school was below 100% and as such no modular units are requested this year.
Falconridge School	The Opening Day utilization for this school was below 100% and as such no modular units are requested this year.
Sir Wilfrid Laurier School	The Opening Day utilization for this school was below 100% and as such we will not be requesting modular units this year.
Coventry Hills School	The Opening Day utilization for this school was below 100% and as such no modular units are requested this year.



Stanley Jones School	The Opening Day utilization for this school was below 100% and as such no modular units are requested this year.
Terry Fox School	The Opening Day utilization for this school was below 100% and as such no modular units are requested this year.
North Trail High School	The Opening Day utilization for this school was below 100% and as such no modular units are requested this year.
Captain Nichola Goddard School	The Opening Day utilization for this school was 114%. Adding modular units to this site was deemed difficult and cost prohibitive and as such no modular units are requested this year. The school is experiencing a bubble of enrolment in certain grades and future enrolment is anticipated to decline once these cohorts have moved through the school.
Dr. Martha Cohen School	The Opening Day utilization for this school was below 100%. Adding modular units to this site was deemed difficult and cost prohibitive.
James Fowler High School	The Opening Day utilization for this school was 119%. Adding modular units to this site was deemed difficult and cost prohibitive and as such no modular units this are requested year. The addition of modulars at Nelson Mandela will reduce the pressure on James Fowler High School. Enrolment will be monitored.
Ted Harrison School	The Opening Day utilization for this school was 109%. Adding modular units to this site was deemed difficult and cost prohibitive and as such no modular units are requested this year. Ted Harrison School is presently being overflowed. The addition of modulars to schools in the NE may provide opportunities to establish an overflow closer to Ted Harrison school but will require additional analysis upon modular plan approvals.

The Modular Classrooms Excluded from Modular Unit Additions (**Attachment VIII**) summarizes the justification for the schools listed above, including current and projected utilization rates.

### **Disposition/Relocation of Existing Modular Classrooms**

Alberta Education approves the use of modular classrooms as a means to alleviate emergent, short to medium-term growth pressures within a school jurisdiction. The Modular Classroom Program is intended to address the typical growth cycle of a community. At some point, a community's school-aged population peaks and begins to decline. Decreased enrolment results in a reduction of the utilization value for a school and higher operating costs per student. Removal and relocation of modular classrooms to other schools or jurisdictions where demographic pressures are high offers an alternative approach to adjusting catchment areas or grade configurations to optimize utilization rates. The Operations and Maintenance (O&M) Funding Grant framework maximizes provincial funding for schools that operate at a utilization value of 85% or higher.

Some CBE-owned modular classrooms in the inventory are older and have exceeded their design lifecycle. Such units may require significant investment to improve their condition. Disposition of modular units that have exceeded their lifecycle helps increase utilization rates at schools, reduces operating costs, and eliminates deferred maintenance for aging infrastructure that is not required to accommodate students now or into the medium term.

Modular classrooms constructed at schools within the last 15 years may be considered for relocation and redistribution to sites with high demographic pressures. Alberta Education retains ownership of modular classrooms provided to school jurisdictions. As a result, provincial approval must be sought before relocation or demolition of existing modular units is undertaken.

Where modular classrooms are approved for relocation or disposition, site remediation work is required at the donor school to disconnect services, rehabilitate the site and restore landscaping. Costs for professional consulting, demolition, and site remediation would be requested from the province to support this work.

Modular classrooms identified for disposition and/or relocation are selected based on condition and school utilization, not through the ranking process used to identify schools best suited to acquire additional modular classrooms.

One modular classroom at one school is recommended for disposition as part of the 2024-25 Modular Classroom submission (i.e. removal of 25 student spaces), as follows:

<b>Table 1: Modular Classrooms Recommended for Disposition</b>							
<b>School</b>	<b>2023 Provincial Capacity</b>	<b>2023 Opening Day Provincial Utilization</b>	<b># of Modular Classrooms to be Dispositioned</b>	<b>Estimated Reduction to Provincial Capacity*</b>	<b>Estimated Provincial Capacity after Disposition</b>	<b>Estimated Provincial Utilization in 2024</b>	<b>Estimated Provincial Utilization in 2026</b>
<b>James Short Memorial</b>	471	34%	1	25	446	43%	41%

*\*The estimated reduction to Provincial Capacity assumes 25 student spaces per unit.*

This year, twelve modular classrooms at four schools have been identified as no longer required. These twelve units are recommended for relocation to the aforementioned schools requiring additional modular classrooms.

School	2023 Provincial Capacity	2023 Opening Day Provincial Utilization	# of Modular Classrooms to be Relocated to other sites	Estimated Reduction to Provincial Capacity*	Estimated Provincial Capacity after Disposition	Estimated Provincial Utilization in 2024	Estimated Provincial Utilization in 2026
<b>Banting and Best</b>	250	65%	2	50	200	79%	82%
<b>Glenmeadows</b>	516	68%	2	50	466	80%	90%
<b>Riverbend</b>	502	60%	4	100	402	83%	88%
<b>Somerset</b>	374	61%	4	100	274	80%	79%

*\*The estimated reduction to Provincial Capacity assumes 25 student spaces per unit.*

The donor/recipient relationship between schools under a relocation scheme are proposed as follows:

Donor School	Number of Modular Units	Recipient School
<b>Banting and Best</b>	2	Connaught
<b>Glenmeadows</b>	2	Sir Winston Churchill High
<b>Riverbend</b>	4	Sir Winston Churchill High
<b>Somerset</b>	4	Prairie Sky

## 5 | Financial Impact

Alberta Education funds the relocation, addition and disposition of modular classrooms including consulting fees, construction costs and project expenses. However, Alberta Education does not fund connection corridors where required or new furniture, fixtures & equipment (FF&E) for modular relocation projects.

The CBE must provide capital funding for modular projects that include connection corridors or require Furniture, Fixtures & Equipment. Infrastructure Maintenance Renewal (IMR) and Capital Maintenance and Renewal (CMR) grants are not permitted to cover these project expenses on modular projects.

The total project value for modular classroom projects includes the average base value and the value for site revisions associated to Code and Bylaw upgrades. The average base value includes consulting fees, permits, transportation, and construction costs associated to the installation of one modular classroom.

The value for site revision includes upgrades to meet current Code and Bylaw requirements which includes fire access provisions, parking lot expansions, additional washroom facilities, playfield relocations, site grading, etc. These additional scopes of work are directly driven by existing site conditions and these costs form the Percentage Above Average Cost referenced in attachments VI, VII and VIII.

For modular classroom relocation projects, the average base project value equals approximately \$168,000.00 per modular unit. The total estimated project value for each modular relocation project is summarized below:

<b>Table 4: Summary of Modular Classroom Relocation Costs</b>			
<b>School</b>	<b>Estimate of Relocation Costs (Covered by Alberta Education)</b>	<b>Estimate of Relocation Costs (Covered by CBE)</b>	<b>Estimate of Desks and Chairs and Smartboards* (Covered by CBE)</b>
Prairie Sky School (Four Units)	\$735,000	\$48,000	\$52,853
Sir Winston Churchill High School (Six Units)	\$1,133,000	\$72,000	\$79,280
Connaught School (Two Units)	\$336,000	\$24,000	\$26,427
<b>Total</b>	<b>\$2,284,000</b>	<b>\$144,000</b>	<b>\$158,559</b>

\* Estimates for tables and chairs will fluctuate based on class size.

For new modular classroom addition projects, the average base project value equals approximately \$148,000 per modular unit. Estimates for desks and chairs will fluctuate based on class size. The total estimated project value for each new modular addition project is summarized below:

<b>Table 5: Summary of New Modular Classroom Costs</b>			
<b>School</b>	<b>Estimate of New Addition Costs (Covered by Alberta Education)</b>	<b>Estimate of Construction Costs (Covered by CBE)</b>	<b>Estimate of Desks and Chairs and Smartboards* (Covered by CBE)</b>
Connaught School (Four Units)	\$834,000	\$0	\$52,853
Nelson Mandela High School (Six Units)	\$1,103,000	\$100,000	\$79,280
Peter Lougheed School (Four Units)	\$833,000	\$100,000	\$52,853
Mahogany School (Four Units)	\$821,000	\$100,000	\$52,853
Grant MacEwan School (Six Units)	\$1,199,000	\$0	\$79,280

Hugh A. Bennett School (Four Units)	\$789,000	\$100,000	\$52,853
Colonel Irvine School (Four Units)	\$897,000	\$0	\$52,853
Joane Cardinal - Schubert High School (Six Units)	\$1,375,000	\$0	\$79,280
Dr. E.P. Scarlett High School (Six Units)	\$1,303,000	\$0	\$79,280
Lester B. Pearson High School (Six Units)	\$973,000	\$0	\$79,280
Buffalo Rubbing Stone School (Two Units)	\$507,000	\$0	\$26,427
John G. Diefenbaker High School (Six Units)	\$978,000	\$0	\$79,280
Ernest Manning High School (Six Units)	\$933,000	\$100,000	\$79,280
Kenneth D. Taylor School (Two Units)	\$459,000	\$0	\$26,427
Dr. Gladys McKelvie Egbert School (Two Units)	\$483,000	\$100,000	\$26,427
<b>Total</b>	<b>\$13,487,000</b>	<b>\$600,000</b>	<b>\$898,501</b>

\* Estimates for tables and chairs will fluctuate based on class size. Alberta Education provides \$12,000 per modular unit for furniture, fixtures & equipment for new modular projects, which does not cover all costs.

For modular classroom disposition projects, the average total project value equals approximately \$50,000 per modular unit. The total estimated project value for each new modular disposition project is summarized below:

School	Estimate of Disposition Costs (Covered by Alberta Education)	Estimate of Costs (Covered by CBE)
James Short Memorial	\$50,000	\$0
<b>Total</b>	<b>\$50,000</b>	<b>\$0</b>

The removal of modular units impacts annual operational and maintenance costs, these effects include an increase in utilization, a reduction in utilities costs and a reduction in custodial and maintenance costs. The estimated reduction in O&M costs that would result from the disposition of one modular unit at one school site is approximately \$1,827.

In addition, a one-time reduction in deferred maintenance values can be realized through disposition of modular units. The estimated one-time reduction in deferred maintenance that would result from the disposition of one modular classroom equals \$160,000.

## 6 | Implementation Consequences

---

Alberta Education normally requires school jurisdictions to submit their annual modular classroom program requests by November 1 each year. At the time this report was written, Alberta Education had not yet requested submission of modular classroom program requests for the 2024-25 school year.

If provincial approval of the CBE's modular classroom program requests is obtained before January 2024, there should be adequate time to complete designs, obtain permits and complete construction for all demolition and relocation projects as well as the installation of new units at up to five schools in time for the 2024-25 school year. However, this is subject to the responsiveness of the construction industry in producing new modulars. The installation of the balance of approved new modular units at the remaining schools would be completed throughout the 2024-25 school year. If approval and funding is delayed beyond that timeframe, the likelihood of completion in time for the start of the 2024-25 school year diminishes dramatically.

## 7 | Conclusion

---

The CBE recommends the request of 12 modular unit relocations, 1 modular unit demolition, and 68 new modular units for the 2024-25 school year.

The record number of new modular units being proposed is directly in response to the record enrolment being experienced and that will likely continue for several more years. It is further compounded by the fact that the CBE currently only has approval for the construction on one new school and how new schools take many years to open after they are announced.



**GARY STROTHER**  
ACTING CHIEF SUPERINTENDENT OF SCHOOLS

Attachment I: Revised "Category A" Enrolment, Utilization, Projection  
Attachment II: Eligibility Filters for Modular Classrooms  
Attachment III: Modular Classroom Ranking Criteria  
Attachment IV: Modular Classroom Eligibility Filter Review September 2023  
Attachment V: Modular Classroom Points Assignment September 2023  
Attachment VI: Modular Classrooms Recommended for Unit Relocation 2023  
Attachment VII: Modular Classrooms Recommended for New Units 2023  
Attachment VIII: Modular Classrooms Excluded from Modular Unit Additions 2023

### **GLOSSARY – Developed by the Board of Trustees**

Board: Board of Trustees

Governance Culture: The Board defined its own work and how it will be carried out. These policies clearly state the expectations the Board has for individual and collective behaviour.

Board/Chief Superintendent Relationship: The Board defined in policy how authority is delegated to its only point of connection – the Chief Superintendent – and how the Chief Superintendent’s performance will be evaluated.

Operational Expectations: These policies define both the nonnegotiable expectations and the clear boundaries within which the Chief Superintendent and staff must operate. They articulate the actions and decisions the Board would find either absolutely necessary or totally unacceptable.

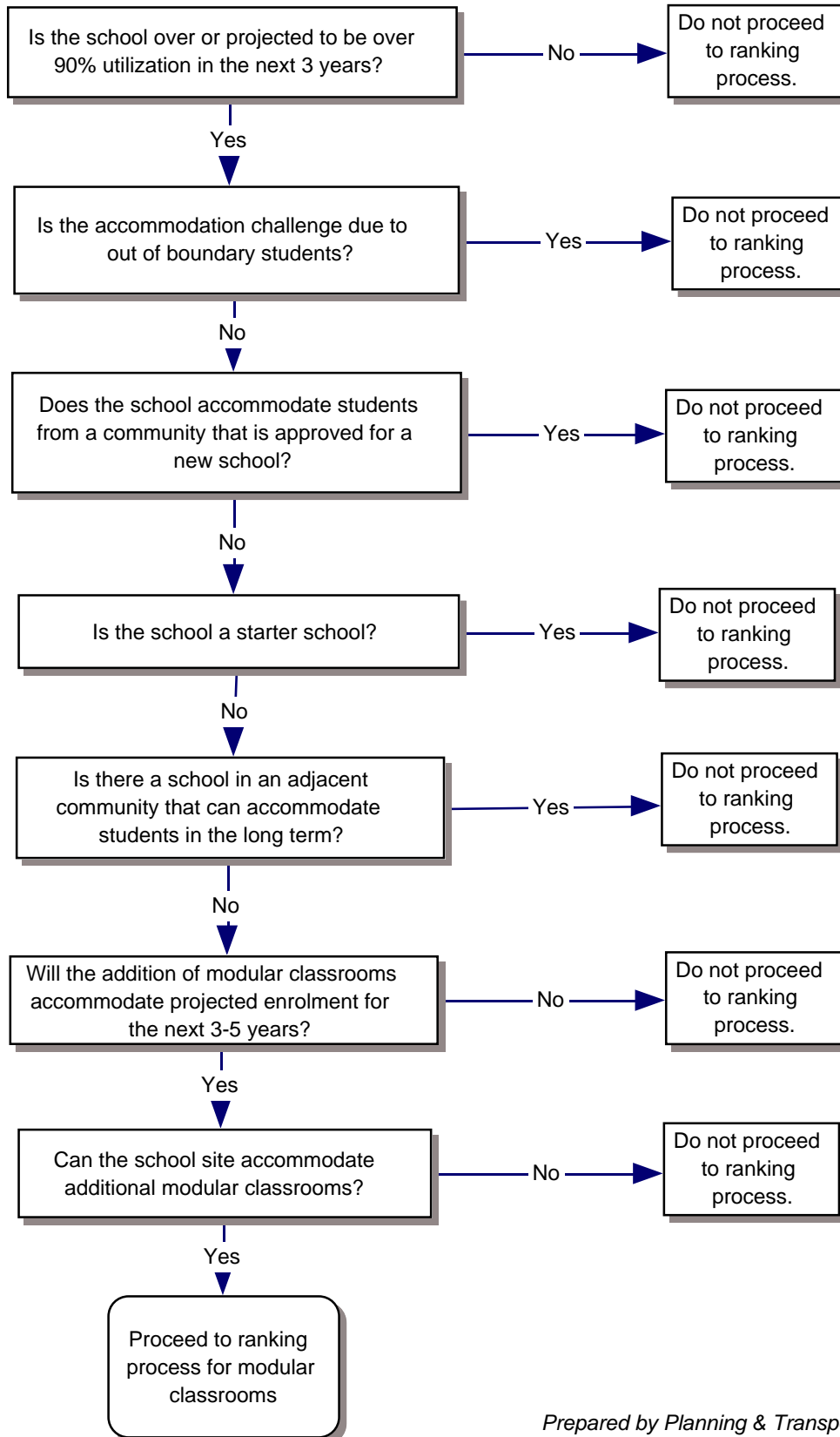
Results: These are our statements of outcomes for each student in our district. The Results policies become the Chief Superintendent’s and the organization’s performance targets and form the basis for judging organization and Chief Superintendent’s performance.

**Attachment I: Revised "Category A" Enrolment, Utilization, Projection**

<b>CATEGORY A</b>	
Enrolment, Utilization, Projection	
Strength of enrolment and utilization into the future (Projected 5 Year Utilization)	
Projected Utilization is less than 89%	0
Projected Utilization is between 90 to 99%	5
Projected Utilization is between 100 to 104%	10
Projected Utilization is between 105 to 109%	15
Projected Utilization is between 110 to 119%	20
Projected Utilization is greater than 120%	25



**Attachment II: Eligibility Filters for Modular Classrooms**



*Prepared by Planning & Transportation Sept.2014*

<b>Category A</b>	Points
<b>Enrolment, Utilization, Projection</b>	
<b>Strength of enrolment and utilization into the future (Projected 5 Year Utilization)</b>	
Projected Utilization is less than 79%	0
Projected Utilization is between 80 to 84%	5
Projected Utilization is between 85 to 89%	10
Projected Utilization is between 90 to 94%	15
Projected Utilization is between 95 to 99%	20
Projected Utilization is greater than 100%	25

Should the Board approve revised Category A, as reflected in Attachment I to this report, the revised Category A would be used for the 2024-25 Modular Classroom Program.

### Category B

#### Site Features, Location

##### Ability to add modular units to the site

Site Size - ability to accommodate portables	1
Physical Obstructions (large trees, playground equip, catch basins, elec. Transformers, etc)	1
Site Grading, contours (slope to portables not good)	1
Additional Parking Requirements	1
Additional Washroom stall / sink requirements	1
Sight lines for Security, creates concealed areas	1
Ability to locate portables near entrance	1
Ability to connect with a corridor	1
Ease of connecting services, ie gas, power, data	1
Proximity to underground services restricting placement (ie: main elec, water, sewer)	1
Proximity and quantity of windows opposite the modulars	1
Fire rating of school exterior wall	1
Existing Firewall on school to accommodate addition	1
Distance from Street (within 15m will allow for more)	1
Location on site for aesthetics.....front vs. rear vs. side	1
Existing catch basins in vicinity to portables for roof drainage	1
Proximity to main sidewalks (downspouts cause icing)	1

**Ranking Range: 0 (difficult) to 1 (easy)**

### Category C

#### Cost to Add Modular Units Compared to Average Cost to Add Modular Units to a Site

##### What is the anticipated cost of modular units at this site?

1 = Poor	\$\$\$\$\$ (more than 25% more)	5
2= Fair	\$\$\$\$ (Between 20 to 24% more)	10
3 = Good	\$\$\$ (Between 15 to 19% more)	15
4 = Very Good	\$\$ (Between 10 to 14% more)	20
5 = Excellent	\$ (Less than 9% more)	25

School Name	Is school over or projected to be over 90% utilization in next 3 years?	Is accommodation challenge due to out of boundary students?	Does school accommodate students from a community that is approved for a new school?	Is the school a starter school?	Is there a school in an adjacent community that can accommodate students in the long term?	Will the addition of modular classrooms accommodate projected enrolment for next 3-5 years?	Can the school site accommodate additional modular classrooms?	Does the school meet all the filters to proceed to the ranking process for modular classrooms?
Bowness High School	Yes	Yes	-	-	-	-	-	-
Fish Creek School	Yes	Yes	-	-	-	-	-	-
Henry Wise Wood High School	Yes	Yes	-	-	-	-	-	-
Mount View School	Yes	Yes	-	-	-	-	-	-
Rosedale School	Yes	Yes	-	-	-	-	-	-
Rosemont School	Yes	Yes	-	-	-	-	-	-
Simon Fraser School	Yes	No	Yes	-	-	-	-	-
William D. Pratt School	Yes	No	Yes	-	-	-	-	-
Acadia School	Yes	No	No	No	Yes	-	-	-
Altadore School	Yes	No	No	No	Yes	-	-	-
Belvedere Parkway School	Yes	No	No	No	Yes	-	-	-
Cambrian Heights School	Yes	No	No	No	Yes	-	-	-
Capitol Hill School	Yes	No	No	No	Yes	-	-	-
Citadel Park School	Yes	No	No	No	Yes	-	-	-
Copperfield School	Yes	No	No	No	Yes	-	-	-
David Thompson School	Yes	No	No	No	Yes	-	-	-
Douglas Harkness School	Yes	No	No	No	Yes	-	-	-
Douglasdale School	Yes	No	No	No	Yes	-	-	-
Dr. Roberta Bondar School	Yes	No	No	No	Yes	-	-	-
Edgemont School	Yes	No	No	No	Yes	-	-	-
Elboya School	Yes	No	No	No	Yes	-	-	-
F.E. Osborne School	Yes	No	No	No	Yes	-	-	-
Fairview School	Yes	No	No	No	Yes	-	-	-
Griffith Woods School	Yes	No	No	No	Yes	-	-	-
Hawwood School	Yes	No	No	No	Yes	-	-	-
Ian Bazalgette School	Yes	No	No	No	Yes	-	-	-
Keeler School	Yes	No	No	No	Yes	-	-	-
King George School	Yes	No	No	No	Yes	-	-	-
Lakeshore School	Yes	No	No	No	Yes	-	-	-
Marion Carson School	Yes	No	No	No	Yes	-	-	-
McKenzie Highlands School	Yes	No	No	No	Yes	-	-	-
McKenzie Lake School	Yes	No	No	No	Yes	-	-	-
New Brighton School	Yes	No	No	No	Yes	-	-	-
Patrick Airlie School	Yes	No	No	No	Yes	-	-	-
Queen Elizabeth School	Yes	No	No	No	Yes	-	-	-
R.T. Alderman School	Yes	No	No	No	Yes	-	-	-
Richmond School	Yes	No	No	No	Yes	-	-	-
Rideau Park School	Yes	No	No	No	Yes	-	-	-
Ron Southern School	Yes	No	No	No	Yes	-	-	-
Royal Oak School	Yes	No	No	No	Yes	-	-	-
Rundle School	Yes	No	No	No	Yes	-	-	-
Scenic Acres School	Yes	No	No	No	Yes	-	-	-
Silver Springs School	Yes	No	No	No	Yes	-	-	-
Thornciffe School	Yes	No	No	No	Yes	-	-	-
Varsity Acres School	Yes	No	No	No	Yes	-	-	-
West Springs School	Yes	No	No	No	Yes	-	-	-
Wilma Hansen School	Yes	No	No	No	Yes	-	-	-
Woodbine School	Yes	No	No	No	Yes	-	-	-
Arbour Lake School	Yes	No	No	No	No	No	-	-
Bayside School	Yes	No	No	No	No	No	-	-
Bishop Pinkham School	Yes	No	No	No	No	No	-	-
Bob Edwards School	Yes	No	No	No	No	No	-	-
Georges P. Vanier School	Yes	No	No	No	No	No	-	-
Jack James High School	Yes	No	No	No	No	No	-	-
Ramsay School	Yes	No	No	No	No	No	-	-
Sibylla Kiddle School	Yes	No	No	No	No	No	-	-
Simons Valley School	Yes	No	No	No	No	No	-	-
Sundance School	Yes	No	No	No	No	No	-	-
Vincent Massey School	Yes	No	No	No	No	No	-	-
Alternative High School	Yes	No	No	No	No	Yes	No	-
Brentwood School	Yes	No	No	No	No	Yes	No	-
Centennial High School	Yes	No	No	No	No	Yes	No	-
Chaparral School	Yes	No	No	No	No	Yes	No	-
Chief Justice Milvain School	Yes	No	No	No	No	Yes	No	-
Chris Akkerman School	Yes	No	No	No	No	Yes	No	-
Colonel J. Fred Scott School	Yes	No	No	No	No	Yes	No	-
Colonel Sanders School	Yes	No	No	No	No	Yes	No	-
Cranston School	Yes	No	No	No	No	Yes	No	-
Crossing Park School	Yes	No	No	No	No	Yes	No	-
Dalhousie School	Yes	No	No	No	No	Yes	No	-
Dr. J. K. Mulloy School	Yes	No	No	No	No	Yes	No	-
Giamorgan School	Yes	No	No	No	No	Yes	No	-
Guy Weadick School	Yes	No	No	No	No	Yes	No	-
H.D. Cartwright School	Yes	No	No	No	No	Yes	No	-
Highwood School	Yes	No	No	No	No	Yes	No	-
Killarney School	Yes	No	No	No	No	Yes	No	-
Le Roi Daniels School	Yes	No	No	No	No	Yes	No	-
Lord Beaverbrook High School	Yes	No	No	No	No	Yes	No	-
Nose Creek School	Yes	No	No	No	No	Yes	No	-
Panorama Hills School	Yes	No	No	No	No	Yes	No	-
Riverside School	Yes	No	No	No	No	Yes	No	-
Robert Thirsk High School	Yes	No	No	No	No	Yes	No	-
Sir John A. Macdonald School	Yes	No	No	No	No	Yes	No	-
Taradale School	Yes	No	No	No	No	Yes	No	-
Thomas B. Riley School	Yes	No	No	No	No	Yes	No	-
Tom Baines School	Yes	No	No	No	No	Yes	No	-
Valley Creek School	Yes	No	No	No	No	Yes	No	-
West Ridge School	Yes	No	No	No	No	Yes	No	-
William Reid School	Yes	No	No	No	No	Yes	No	-

School Name	Is school over or projected to be over 90% utilization in next 3 years?	Is accommodation challenge due to out of boundary students?	Does school accommodate students from a community that is approved for a new school?	Is the school a starter school?	Is there a school in an adjacent community that can accommodate students in the long term?	Will the addition of modular classrooms accommodate projected enrolment for next 3-5 years?	Can the school site accommodate additional modular classrooms?	Does the school meet all the filters to proceed to the ranking process for modular classrooms?
Annie Gale School	Yes	No	No	No	No	Yes	Yes	Yes
Balmoral School	Yes	No	No	No	No	Yes	Yes	Yes
Buffalo Rubbing Stone School	Yes	No	No	No	No	Yes	Yes	Yes
Captain Nichola Goddard School	Yes	No	No	No	No	Yes	Yes	Yes
Clarence Sansom School	Yes	No	No	No	No	Yes	Yes	Yes
Colonel Irvine School	Yes	No	No	No	No	Yes	Yes	Yes
Colonel Macleod School	Yes	No	No	No	No	Yes	Yes	Yes
Connaught School	Yes	No	No	No	No	Yes	Yes	Yes
Coventry Hills School	Yes	No	No	No	No	Yes	Yes	Yes
Dr. E. P. Scarlett High School	Yes	No	No	No	No	Yes	Yes	Yes
Dr. Gladys McKelvie Egbert School	Yes	No	No	No	No	Yes	Yes	Yes
Dr. Gordon Higgins School	Yes	No	No	No	No	Yes	Yes	Yes
Dr. Martha Cohen School	Yes	No	No	No	No	Yes	Yes	Yes
Ernest Manning High School	Yes	No	No	No	No	Yes	Yes	Yes
Falconridge School	Yes	No	No	No	No	Yes	Yes	Yes
Forest Lawn High School	Yes	No	No	No	No	Yes	Yes	Yes
Grant MacEwan School	Yes	No	No	No	No	Yes	Yes	Yes
Hugh A. Bennett School	Yes	No	No	No	No	Yes	Yes	Yes
James Fowler High School	Yes	No	No	No	No	Yes	Yes	Yes
Joane Cardinal-Schubert High School	Yes	No	No	No	No	Yes	Yes	Yes
John G. Diefenbaker High School	Yes	No	Yes	No	No	Yes	Yes	Yes
Kenneth D. Taylor School	Yes	No	No	No	No	Yes	Yes	Yes
Lester B. Pearson High School	Yes	No	No	No	No	Yes	Yes	Yes
Mahogany School	Yes	No	No	No	No	Yes	Yes	Yes
Manmeet Singh Bhullar School	Yes	No	No	No	No	Yes	Yes	Yes
Mount Royal School	Yes	No	No	No	No	Yes	Yes	Yes
Nelson Mandela High School	Yes	No	No	No	No	Yes	Yes	Yes
North Calgary High School	Yes	No	No	No	No	Yes	Yes	Yes
Northern Lights School	Yes	No	No	No	No	Yes	Yes	Yes
O. S. Geiger School	Yes	No	No	No	No	Yes	Yes	Yes
Peter Lougheed School	Yes	No	No	No	No	Yes	Yes	Yes
Prairie Sky School	Yes	No	No	No	No	Yes	Yes	Yes
Saddle Ridge School	Yes	No	No	No	No	Yes	Yes	Yes
Sir Wilfrid Laurier School	Yes	No	No	No	No	Yes	Yes	Yes
Sir Winston Churchill High School	Yes	No	No	No	No	Yes	Yes	Yes
Stanley Jones School	Yes	No	No	No	No	Yes	Yes	Yes
Ted Harrison School	Yes	No	No	No	No	Yes	Yes	Yes
Terry Fox School	Yes	No	No	No	No	Yes	Yes	Yes
Western Canada High School	Yes	No	No	No	No	Yes	Yes	Yes

Attachment V: Modular Classroom Points Assignment 2023

SCHOOL	PROGRAM	CATEGORY A Enrolment/Projection/Utilization	CATEGORY B Site Features/Location	CATEGORY C Cost Compared to Average	TOTAL
Lester B. Pearson High School	Regular	20	10	20	50
John G. Diefenbaker High School	Regular	15	12	20	47
North Trail High School	Regular	20	11	15	46
Sir Winston Churchill High School	Regular	25	9	10	44
Prairie Sky School	Regular	25	8	10	43
Mahogany School	Regular	25	12	5	42
Peter Lougheed School	Regular	25	12	5	42
Balmoral School	Traditional Learning Centre	10	11	20	41
O. S. Geiger School	Regular	25	11	5	41
Nelson Mandela High School	Regular	25	10	5	40
Ernest Manning High School	Regular	15	10	15	40
Grant MacEwan School	Regular	25	9	5	39
Kenneth D. Taylor School	Regular	25	8	5	38
Connaught School	Regular	25	7	5	37
Joane Cardinal-Schubert High School	Regular	25	6	5	36
Dr. E. P. Scarlett High School	Regular and French Immersion	20	10	5	35
Buffalo Rubbing Stone School	Regular	15	12	5	32
Captain Nichola Goddard School	Regular	20	7	5	32
Colonel Irvine School	Regular and Chinese Bilingual	15	11	5	31
Saddle Ridge School	Regular	15	10	5	30
Ted Harrison School	Regular	20	5	5	30
Western Canada High School	Regular and French Immersion	10	8	10	28
Terry Fox School	Regular	5	7	15	27
Colonel Macleod School	Regular and Traditional Learning	10	12	5	27
Dr. Gladys McKelvie Egbert School	Regular	10	12	5	27
Coventry Hills School	Regular	10	12	5	27
Manmeet Singh Bhullar School	Regular	15	6	5	26
Hugh A. Bennett School	Regular	10	10	5	25
Stanley Jones School	Regular and All Girls	10	7	5	22
Northern Lights School	Regular	10	7	5	22
Sir Wilfrid Laurier School	Traditional Learning Centre	5	11	5	21
Dr. Martha Cohen School	Regular	10	6	5	21
Forest Lawn High School	Regular	5	10	5	20
Dr. Gordon Higgins School	Regular	5	8	5	18
Falconridge School	Regular	5	8	5	18
Mount Royal School	Regular	5	7	5	17
Annie Gale School	Regular and Traditional Learning	5	7	5	17
Clarence Sansom School	Regular	5	7	5	17
James Fowler High School	Regular	15	0	0	15

Attachment VI: Modular Classrooms Recommended for Unit Relocation 2023

School Name	Area	Planning Sector	Opening Day 2023 Utilization	Overflow Status	Utilization w/o Overflow	Overflowed To:	# of Units Requested	# of Student Spaces	New Utilization w/o Overflow	Points Ranking	% above Avg. Cost	Playfields Impacted?	Site Revisions
Prairie Sky School	4	NE	110%	Overflowed	135%	Annie Foote School Dr. Gordon Higgins School Monterey Park School	4	100	120%	43	21%	Yes	Long Service Route, Relocate Playfields, Data Closet.
Sir Winston Churchill High School	1	NW	123%	Overflowed	132%	William Aberhart High School	6	150	123%	44	24%	No	Long Service Route, Parking Revisions, Replace Trees, Regrading, Data Closet.
Connaught School	7	C	108%	Overflowed	155%	Ramsay School Earl Grey School Wildwood School	6	150	112%	37	34%	Yes	Long Service Route, Parking & Washroom Expansions, Relocate Playfield, Replace Trees, Data Closet.

Note: For the Unit Relocation request, Connaught School will require 2 units from relocation. The remaining 4 units will be requested through the New Unit request.

Attachment VII: Modular Classrooms Recommended for New Units 2023

School Name	Area	Planning Sector	Opening Day 2023 Utilization	Overflow Status	Utilization w/o Overflow	Overflowed To:	# of Units Requested	# of Student Spaces	New Utilization w/o Overflow	Points Ranking	% above Avg. Cost	Playfields Impacted?	Site Revisions
Connaught School	7	C	108%	Overflowed	155%	Ramsay School Earl Grey School Wildwood School	6	150	112%	37	34%	Yes	Long Service Route, Parking & Washroom Expansions, Relocate Playfield, Replace Trees, Data Closet.
Nelson Mandela High School	4	NE	122%	Overflowed	131%	James Fowler High School	6	150	120%	40	35%	No	New Fire Wall, Washroom Expansion, Sprinklered Connection, Regrading, Relocate Services, Connection Corridor.
Peter Lougheed School	4	NE	101%	Overflowed	121%	Pineridge School Clarence Sansom School	4	100	110%	42	58%	Yes	New Fire Wall, Parking & Washroom Expansion, Sprinklered Connection, Replace Trees, Regrading, Connection Corridor.
Mahogany School	5	SE	123%	Overflowed	142%	Bayside School	4	100	120%	42	56%	No	New Fire Wall, Parking & Washroom Expansion, Sprinklered Connection, Connection Corridor.
Grant MacEwan School	4	NE	118%	Overflowed	135%	O.S. Geiger School	6	150	107%	39	35%	Yes	Long Service Route, Parking & Washroom Expansion, Data Closet.
Hugh A. Bennett School	4	NE	103%	Overflowed	104%	Pineridge School	4	100	104%	25	50%	Yes	New Fire Wall, Parking & Washroom Expansion, Sprinklered Connection, Relocate Playfields, Connection Corridor.
Colonel Irvine School	2	C	105%	None	105%		4	100	98%	31	52%	Yes	Long Service Route, Parking & Washroom Expansion, Data Closet.
Joane Cardinal-Schubert High School	5	SE	127%	None	127%		6	150	116%	36	55%	No	Long Service Route, New Fire Access Lane, Fire Hydrant, Data Closet Parking & Washroom Expansion, Replace Trees, Regrading.
Dr. E. P. Scarlett High School	6	S	116%	None	116%		6	150	106%	35	47%	No	Long Service Route, New Fire Access Lane, Data Closet, Parking Revisions.
Lester B. Pearson High School	4	NE	113%	None	113%		6	150	103%	50	10%	No	Long Service Route, Parking Revisions, Washroom Expansion, Replace Trees, Data Closet.
Buffalo Rubbing Stone School	2	N	109%	None	109%		2	50	100%	32	71%	No	New Fire Wall, Parking Expansion, Sprinklered Connection, Replace Trees, Regrading.
John G. Diefenbaker High School	2	N	108%	None	108%		6	150	98%	47	10%	No	Long Service Route, Data Closet.
Ernest Manning High School	7	W	107%	None	107%		6	150	98%	40	16%	No	New Fire Wall, Sprinklered Connection, Connection Corridor.
Kenneth D. Taylor School	2	N	107%	Overflowed	121%	Cambrian Heights School	2	50	111%	38	55%	No	Parking & Washroom Expansion, Sprinklered Connection, Regrading.
Dr. Gladys McKelvie Egbert School	3	NE	101%	None	101%		2	50	96%	27	97%	No	New Fire Wall, Parking Expansion, Connection Corridor.

Attachment VIII: Modular Classrooms Excluded from Modular Unit Additions 2023

School Name	Area	Planning Sector	Opening Day 2023 Utilization	3-Yr Utilization Average	Overflow Status	# of Units That Can Be Accommodated	# of Student Spaces	New Utilization	Points Ranking	% above Avg. Cost	Playfields Impacted?	Site Revisions
Western Canada High School	7	C	111%	104%	Overflowed	6	150	104%	28	17%	Yes	Long Service Route, Parking Expansion, Relocate Playfields, Data Closet.
Dr. Gordon Higgins School	4	NE	109%	96%	Receiver	1	25	106%	18	69%	Yes	Parking Expansion, Relocate Playfields, Data Closet.
Balmoral School	2	C	106%	105%	None	2	50	97%	41	13%	Yes	Long Service Route, Parking Expansion, Relocate Playfields, Data Closet.
O. S. Geiger School	4	NE	105%	134%	Receiver	6	150	81%	41	50%	Yes	Long Service Route, New Fire Access Lane, Parking & Washroom Expansion, Barrier Free Upgrades, Relocate Playfields, Data Closet.
Saddle Ridge School	4	NE	102%	108%	Overflowed	2	50	102%	30	98%	Yes	Parking & Washroom Expansion, Relocate Playfields, Sprinklered Connection, Regrading, Relocate Services.
Colonel Macleod School	3	C	100%	101%	None	4	100	87%	27	34%	Yes	Parking & Washroom Expansion, Relocate Playfields.
Mount Royal School	7	C	100%	100%	Overflowed	4	100	100%	17	33%	Yes	Long Service Route, Parking & Washroom Expansion, Relocate Playfields, Regrading, Data Closet.
Annie Gale School	4	NE	99%	97%	None	4	100	86%	17	32%	No	Short Service Route, Parking & Washroom Expansion, Data Closet.
Manmeet Singh Bhullar School	4	NE	98%	106%	None	4	100	83%	26	65%	No	Long Service Route, Fire Access Lane, Parking & Washroom Expansion, Data Closet.
Clarence Sansom School	4	NE	98%	100%	Receiver	2	50	92%	17	117%	No	Long Service Route, New Fire Hydrant, Parking Expansion Data Closet.
Forest Lawn High School	3	E	97%	95%	None	4	100	95%	20	41%	No	Long Service Route, Parking Expansion, Data Closet.
Northern Lights School	3	N	97%	102%	None	4	100	82%	22	57%	No	Washroom Expansion, Sprinklered Connection, Replace Trees, Regrading, Barrier Free Upgrades, Connection Corridor.
Falconridge School	4	NE	97%	96%	None	2	50	89%	18	66%	Yes	New Fire Wall, Parking Revisions, Relocate Playfields, Connection Corridor.
Sir Wilfrid Laurier School	4	E	97%	100%	None	4	100	81%	21	45%	No	Short Service Route, New Fire Wall, Washroom Expansion, Data Closet, Connection Corridor.
Coventry Hills School	3	N	95%	102%	None	2	50	88%	27	30%	No	Parking & Washroom Expansion.
Stanley Jones School	3	C	94%	101%	None	4	100	80%	22	66%	Yes	Long Service Route, New Fire Access Lane, Parking Expansion Relocate Playfields.
Terry Fox School	4	NE	93%	97%	None	4	100	83%	27	14%	No	Long Service Route, Parking & Washroom Expansion, Replace Trees, Data Closet.
North Trail High School	3	N	82%	111%	None	6	150	75%	46	19%	No	Short Service Route, New Fire Hydrant, Data Closet.
Captain Nichola Goddard School	Excluded from analysis due to cost											
Dr. Martha Cohen School	Excluded from analysis due to cost											
James Fowler High School	Excluded from analysis due to cost											
Ted Harrison School	Excluded from analysis due to cost											