

**report to  
Board of Trustees**

**School Enrolment Report 2025-2026**

Date	December 16, 2025
Meeting Type	Regular Meeting, Public Agenda
To	Board of Trustees
From	Joanne Pitman Chief Superintendent of Schools
Purpose	Information
Originator	Dany Breton, Superintendent, Facilities & Environmental Services
Governance Policy Reference	Operational Expectations: OE-7: Communication with and Support for the Board OE-9: Facilities
Resource Person(s)	Catherine Ford, Director, Planning Jeff Quigley, Manager, Planning Sherri Lambourne, Manager, Real Estate and Leasing Heather Kirkwood, Manager, Business Administration, School Improvement Arlene Reid, Manager Financial Systems Tanya Scanga, Director Corporate Financial Services Sandra Pearse, Admissions Coordinator, CBE Welcome Centre

## 1 | Recommendation

---

This report is being provided for information to the Board of Trustees. No decision is required.

## 2 | Issue

---

Each year in late November or early December, a School Enrolment Report is presented to the Board of Trustees for information.

### 3 | Background

---

The purpose of the report is to provide a snapshot of the end-September 2025 enrolment data for all CBE schools and programs. The CBE uses this information to prepare key documents such as the annual Three-Year School Capital Plan, which provides an updated analysis of projected enrolment growth and population trends.

For many years, the CBE relied on the City of Calgary's annual Civic Census data as the main source for population and demographic information to provide context for this report. The City of Calgary's census program was discontinued in 2019. *The Calgary and Region Economic Outlook 2025-2030: Fall 2025 Update* document is now the only City data that informs this report.

Several attachments are included as part of the School Enrolment Report, which provide the following information:

- The number of students enrolled in each school, by grade and program, including alternative programs, classes for students with complex learning needs, and the number of out-of-attendance area students as of end September 2025;
- CBE total enrolment over the past 10 years;
- The provincial capacity of schools, including the associated number of modular classrooms, and utilization rate of each school building;
- A description of each of the specialized classes offered by the CBE;
- A list of the leases and the amount of space leased for each building; and
- Maps showing the change in number of students by neighbourhood over time as well as the number of students by neighbourhood who registered through the Welcome Centre.

It is important to note that the School Enrolment Report does not provide financial data or information on class size within schools. School budgets are adjusted during the school year to allocate resources based on equity considerations, complexity, and other additional factors that are unique to each school.

### 4 | Analysis

---

#### City of Calgary's Population

The City of Calgary estimates that Calgary's population was 1,509,800 as of April 2024. This represents an increase of approximate 87,600 people, or 6.2 per cent, from April 2023.

Calgary's population is forecast to be 1,562,600 in 2025 – an increase of approximately 52,800 people, or 3.5 per cent, from the year before. This slower

population growth is largely due to anticipated reductions in international immigration over the next few years.

Net migration continues to drive population growth accounting for 80.7 per cent of the total projected increase with 42,600 people. Natural increase, due to the difference between births and deaths, is projected to add an additional 10,200 to the Calgary population in 2025.

The primary school age population (6-17 years) grew by 11,900 people between 2023 and 2024, and it is projected to grow by a further 6,100 people in 2025.

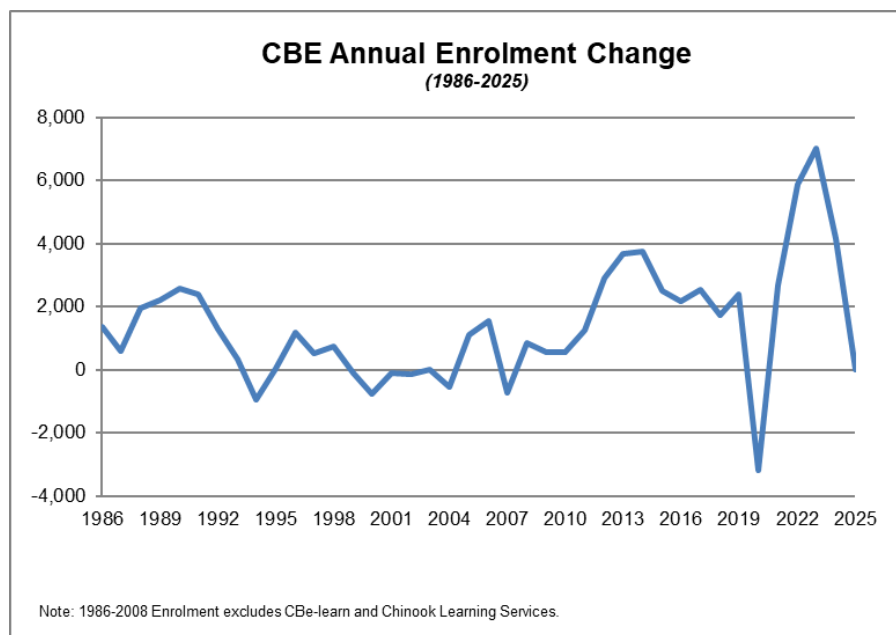
Calgary's population grew by 25% between 2014 and 2024, faster than any other major Canadian city over this period. The trend is expected to continue in 2025, although with a slowdown in net migration.

More information on the City of Calgary's outlook is available on the City of Calgary website [The Calgary and Region Economic Outlook 2025-2030: Fall 2025 Update](#).

### Enrolment Trends-Calgary Board of Education

Graph 1 shows annual year-over-year changes in student enrolment. For 10 consecutive years between 2009 and 2019, enrolment grew each year. A distinctive dip occurred during the 2020-21 school year, when enrolment dropped by 3,168 students, or 2.5 per cent. However, a sharp increase was realized between 2021 and 2023. Between end-September 2021 and end-September 2024, enrolment at CBE increased by just over 17,000 students.

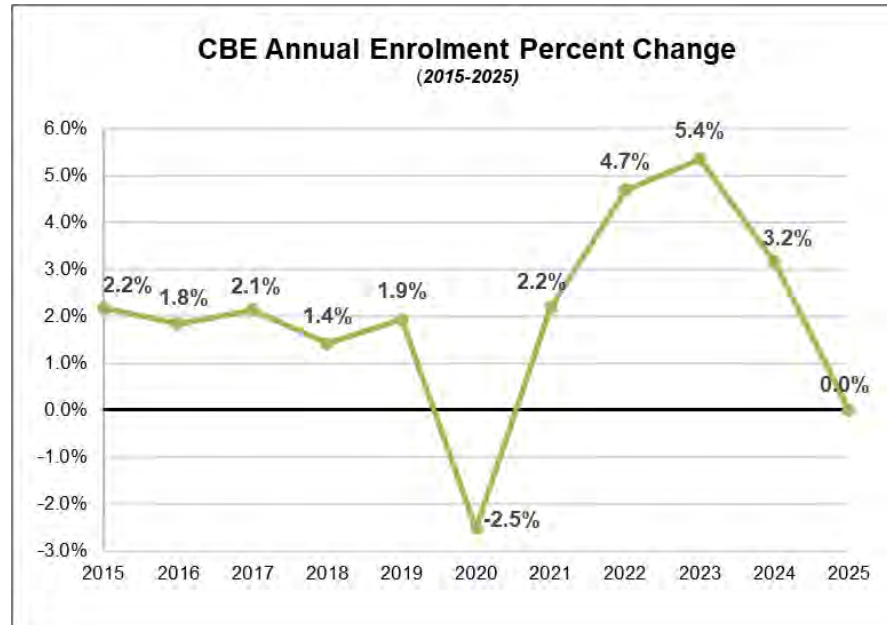
Graph 1: CBE Annual Enrolment Change (1986-2025)



Between end-September 2024 and end-September 2025, enrolment remained flat.

Graph 2 shows year-over-year percent changes in student enrolment since 2015. In the last 10 years, enrolment grew each year except for the decline in 2020. Although growth remained flat in 2025, total enrolment is the highest ever experienced at CBE, at 142, 403 students.

Graph 2: CBE Annual Enrolment Percent Change (2015-2025)



This year, the CBE aligned its enrolment validation process with Alberta Education and Childcare's count period. This resulted in more students being identified as unfunded than in previous years leading to increased accuracy in the validated enrolment count for September 2025-26.

Table 1 below compares student enrolment counts between end-September 2024 and end-September 2025.

- The largest enrolment increases occurred in Divisions II (Gr 4-6) and IV (Gr10-12), while the largest decline occurred in kindergarten.
- The market share for kindergarten students dropped to approximately 52.4 per cent this school year from 55.8 per cent in the 2024-25 school year. This is the result of fewer potential kindergarten students in the CBE catchment area in comparison to the 2024-25 school year, as well as less kindergarten students registering this school year.
- The CBE offers pre-kindergarten programming at one location to 33 students this year.
- As of end-September 2025, 14 schools offered a full day kindergarten program, reporting a total enrolment of 448 full day kindergarten students, a decrease of 46 students or -9.3 per cent from last year.
- Between end-September 2024 and end-September 2025, 20,789 K-12 students left the CBE, and 20,790 new students joined. There was a net gain

of 1 student this school year. Both the number of new registrations as well as the number of withdrawals was lower than last year.

Table 1: Comparison of CBE Student Enrolment Counts between end-September 2024 and end-September 2025, by division.

	End-September 2024	End-September 2025	Difference
Pre-Kindergarten	40	33	-7
Kindergarten	9,082	8,310	-772
Grades 1-3 (Division I)	32,654	32,071	-583
Grades 4-6 (Division II)	31,244	32,047	803
Grades 7-9 (Division III)	30,794	31,051	257
Grades 10-12 (Division IV)	35,902	36,230	328
Sub-Total (Pre-K to GR12)	139,716	139,742	26
Self Contained Special Ed.	2,686	2,661	-25
<b>Total</b>	<b>142,402</b>	<b>142,403</b>	<b>1</b>

High enrolment is still putting pressure on our system. The number of schools in overflow is lower than last school year, but it is still higher than previous years. As of end-September 2025, 32 schools had an overflow plan in place. This represents 12.7 per cent of all CBE schools. By comparison, at the end of the 2024-25 school year, 36 schools had an overflow in place; 21 schools had an overflow in place at the end of the 2022-23 school year: and only 12 schools had an overflow plan in place at the end of the 2021-22 school year.

### Non-Canadian Student Admissions through the CBE Welcome Centre

Students who are “Non-Canadian”, as defined in AR6090, must register for admission to CBE schools through the CBE Welcome Centre. Students admitted through the CBE Welcome Centre include permanent residents, refugee claimants, children of lawfully admitted temporary residents, children with parents/guardians on work or study permits, and children with parents/guardians who are permanent residents or Canadian citizens although their child is not.

The CBE Welcome Centre tracks student registrations from July 1 to June 30 of each year. Graph 3 shows the number of Non-Canadian Students that registered through the CBE Welcome Centre since July 1, 2016.

During the COVID-19 pandemic, because of global lockdowns and restricted travel, the number of student registrations through the Welcome Centre declined from 4,414 registrations in 2018-19, by 785 students (or -18 per cent) in 2019-20 and 1,766 students (or -49 per cent) in 2021-22.

Conversely, from July 1, 2021, to June 30, 2022, there were more than three times as many registrations through the CBE Welcome Centre than during the 2020-21 school year. 5,734 students registered for CBE schools through the CBE Welcome Centre between July 1, 2021, to June 30, 2022. The uptick in non-Canadian student registrations continued during the 2022-23 and 2023-24 school

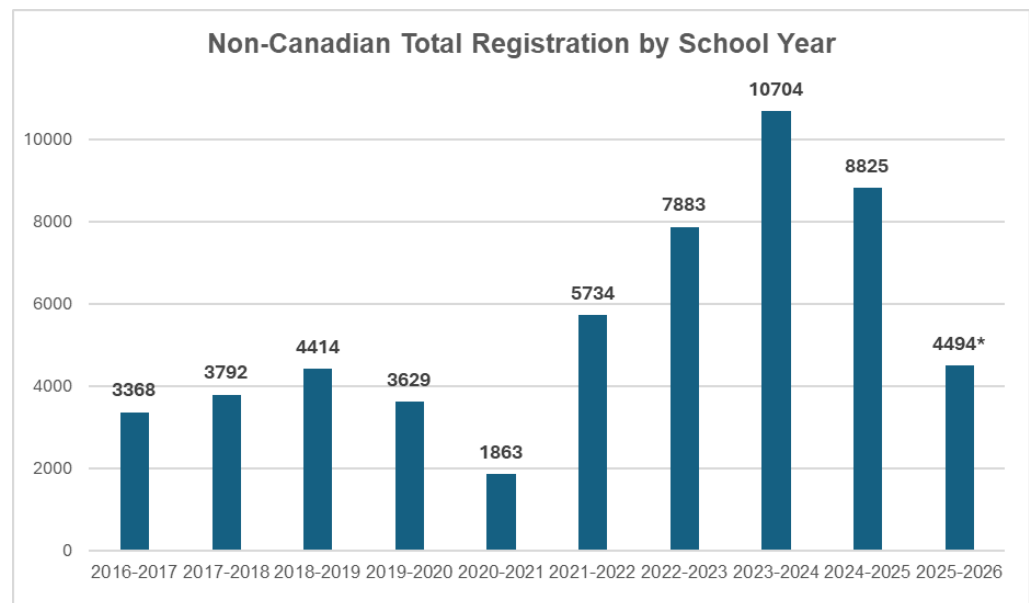
years. 7,883 student registrations were processed between July 1, 2022, and June 30, 2023, and 10,704 student registrations between July 1, 2023, and June 30, 2024. This is the highest annual non-Canadian student admission at CBE schools on record.

Between July 1, 2024, and June 30, 2025, 8,825 student registrations were processed by the CBE Welcome Centre. This is an 18 per cent or 1,879 decrease in registrations from the year prior. Although the number of students registration declined from the 2023-24 school year, this is the second highest annual non-Canadian student admission at CBE schools on record.

Non-Canadian student admissions have continued throughout the summer and autumn of 2025. For the 2025-26 school year, the Welcome Centre has processed 4,494 registrations up to September 29, 2025 (3 months of registrations).

It follows that student admissions through the CBE Welcome Centre are the primary contributor to the net increase in student enrolments for the past four years. However, Immigration, Refugees and Citizenship Canada (IRCC) has announced a decrease in overall permanent and temporary resident admissions for the next three years starting in 2025, as well as an intake cap on most study permit applications for two years starting in 2024. Due to these measures, it is likely that non-Canadian student registrations will be fewer during the 2025-26 school year and continue to decline into the future.

Graph 3: Non-Canadian Student Admissions



*Note: Non-Canadian Total Registrations for 2025-2026 as of September 29, 2025 – (i.e. 3 months of registrations)*

The map in Attachment I shows where students who had enrolled for CBE schools through the CBE Welcome Centre resided at the time of registration. While registrants are distributed across the city, high concentrations are found in the centre and northeast sectors with smaller pockets in the northwest, and the far west, north and southeast sectors.

## School Enrolment (2024-2025)

Attachment II lists enrolment by CBE Administrative Area for each school by grade. It also reports the number of out-of-attendance area students in each school. Out-of-attendance-area (OOA) would include those students who are outside of CBE boundaries or are not attending their designated school. There are several CBE schools in communities where enrolment from the designated communities may be low or declining and the out of attendance area students make up a relatively large proportion of the student population. Accepting out of attendance area students each year allows these schools to maintain strong programming for students. Additionally, the out-of-attendance transfer process can also allow students to access programs that may not exist within their designated school. This is typically most prevalent at the high school level. Recently, due to high enrolment and limited space in high schools, the ability to transfer schools has been extremely constrained, and has led to a decline in the number of OOA students at the high school level.

Overall, 5,271 OOA students were enrolled at CBE, which represents a decrease of 740 students, or -12.3 per cent, from the 2024-25 school year. This OOA student count was impacted by a fewer number of non-residents of the CBE School Boundary enrolled at CBE schools in comparison to the 2024-25 school year.

The number of students in each Administrative Area ranges between 17,029 students in Area 3 to 24,734 students in Area 5. The largest number of students are found in Areas 4, 5 and 7. As of end-September 2025, enrolment in Areas 4 and 5 experienced the largest growth with 1.6 and 1.5 per cent respectively. Area 7 showed a decrease of 432 students, or -2.1 per cent, from the 2024-25 school year, impacted by lower number of students residing in the west and centre residential sectors in comparison to the 2024-25 school year.

A graph of total student enrolment over the last decade is included in Attachment III. Total enrolment as of end-September 2025, was 142,403 students. 114,387 CBE students (or 80.3 per cent of total student population) were enrolled in the regular program (including Home Education, Outreach, Unique Settings, Chinook Learning and CBe-learn), which represents a decrease of 457 regular program students, or -0.4 per cent, from the 2024-25 school year.

Attachment IV is a map of student population change by community. It conveys the changes that occurred in pre-k to Grade 12 enrolment, by community, from end-September 2024 to end-September 2025. Consistent with the large increases in student population growth across the system, the largest increase occurred in the northeast and north sectors, and the downtown area. The map also indicates the location of schools that are approved for either construction, planning and/or design. The Evanston Middle School will be the next new CBE school expected to open for the 2026-27 school year.

## Alternative Programs

Enrolment in alternative programs by school is reported in Attachment V. As of end-September 2025, 28,016 CBE students (or 19.7 per cent of total student population) were enrolled in alternative programs, which represents an increase of 458 students, or 1.7 per cent, from the 2024-25 school year.



## Complex Learning Needs

Enrolment counts for the regular program include students with complex learning needs. Some schools have classes for students with complex learning needs that do not offer a regular program but do offer an alternative program. In these situations, enrolment for students with complex learning needs is reported separately. Schools that offer classes for students with complex learning needs, are known as specialized classes and can have grade configurations that differ from the school's regular or alternative program(s). For example, a school that accommodates kindergarten to Grade 4 students for the regular program may simultaneously offer Grade 5 complex learning classes.

A detailed list of classes and enrolment by school for students with complex learning needs is reported in Attachments VI and VII. As of end-September 2025, 3,112 CBE students (or 2.2 per cent of total student population) were enrolled in specialized classes (excluding Unique Settings), which represents a decrease of 61 students, or -1.9 per cent, from the 2024-25 school year.

A list of definitions and acronyms for specialized classes for students with complex learning needs is included in Attachment VIII.

## Capacity and Utilization

Attachment IX provides provincial capacity and utilization rates for schools. The method for calculating Provincial Capacity is based on the on the “instructional” area determined for a school.

The following instructional spaces, if applicable for a particular school, are exempted and deducted from the total capacity of a school:

- areas leased to the public sector and non-profit groups, with the lease rate being at cost or for a nominal fee (e.g. not for profit daycare);
- areas leased by independent schools;
- areas leased by charter schools; and
- decentralized administration space in schools.

Area exemptions are not granted for space leased to the private sector for non-private school use.

Lease exemptions are a parameter in the formula used to calculate capacity and as such, a school's capacity has the potential to change from year to year. The execution of a new lease for space, changes to an existing lease arrangement, or the discontinuation of a leased space at a school can alter a school's capacity value.

The calculation of utilization is based on a Provincial formula that “weighs” students in the following categories:

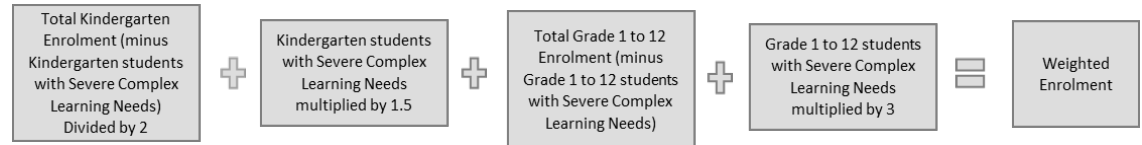
- Kindergarten students who typically attend school on a half day basis (Early Development Centre and full-day kindergarten students are not weighted).



- K-12 students who have severe complex learning needs.

Students with a severe complex learning code may attend either a regular program or a specialized complex learning class.

The graphic below gives the calculation for weighted enrolment based on end of September student enrolment each year:



Once weighted enrolment is determined, utilization is calculated by dividing the weighted enrolment by the Provincial capacity.

Graph 4 shows the CBE System Utilization rates for the last 10 years. Utilization rates have been increasing since 2022. Between end-September 2024 and end-September 2025, the utilization rate of the CBE remained flat. As of end-September 2025, the utilization rate of the system is 95 per cent, which remained as the highest experienced in the last 10 years.

Graph 4: CBE System Utilization Rates (2015-2025)

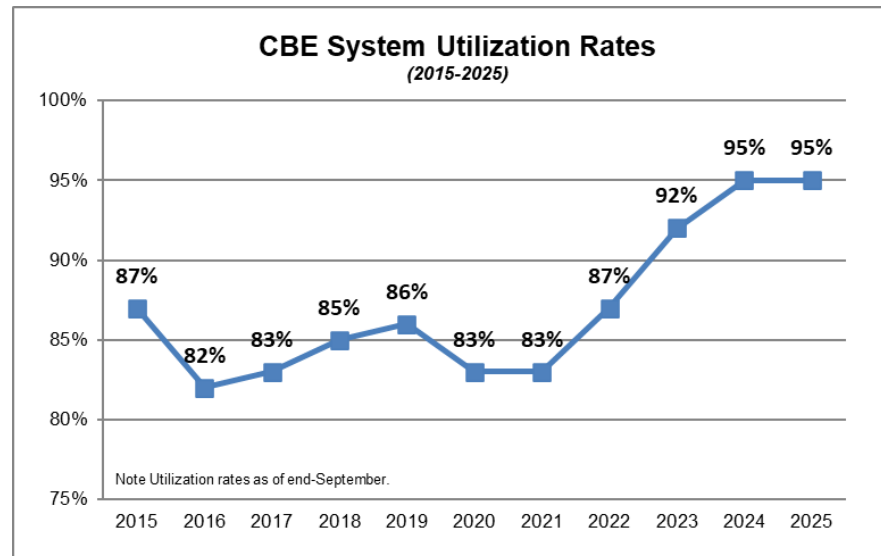


Table 2 shows the number of schools over, at, and under 85 per cent utilization per end-September 2024 enrolment data and end-September 2025 enrolment data with fewer schools over 85% compared with last school year.

Table 2: Comparison of number of schools over, at and under 85% utilization

	2024	2025	Change
Over 85%	171	165	-6
At 85%	0	1	1
Under 85%	67	71	4

## Leases

Leases of space by Area and leasing of surplus school facilities are reported in Attachments X and XI. A total of 36,282.6 m<sup>2</sup> of space in operating CBE facilities is leased for the 2025-26 school year and primarily consists of space for non-profit childcare providers. Fifteen surplus school facilities are leased, primarily to charter schools.

## 5 | Financial Impact

The Alberta Government has updated its funding model, moving from a three-year Weighted Moving Average (WMA) to a two-year Adjusted Enrolment Method (AEM). The new approach determines the annual funding school jurisdictions receive and is designed to provide funding that is more responsive to growth while still providing stability for division with declining enrolments. Table 3 shows how the two-year AEM enrolment is calculated.

Table 3: Two-year AEM enrolment

School Year	Weighted Factor	Enrolment Count FTE
2024-2025	30%	Estimate
2025-2026	70%	Projection

Source: *Funding Manual for School Authorities 2025/2026 School Year*

Table 4 shows the number of full-time equivalent funded students for last school year and this school.

Table 4: Funding Full-time Enrolment (FTE) over two years

Student Count	2024-2025	2025-2026
Actual Funded FTE	136,155	136,998*

\*Subject to review and confirmation by Alberta Education & Childcare

This means there are approximately 137,000 funded students within the CBE for the 2025-26 school year. Funded enrolments based on the AEM is also approximately 137,000 (*both figures are subject to review and confirmation by Alberta Education & Childcare*). Since CBE experienced flat growth year-over-year, the AEM enrolment method provides stability in this scenario. For rapidly growing school jurisdictions, however, the AEM approach will still attract less grant revenue than actual funded-student enrolment, but not as significant compared to the WMA method.

The CBE is aware that Alberta Education & Childcare is preparing a new funding model for Budget 2026-27 and is unaware at this time of what the implications, if any, this will have on AEM and funding.

Between end-September 2024 and end-September 2025, enrolment growth remained flat at CBE with a total of 142,403 students.

Total enrolment is the highest ever experienced at CBE. The stability in enrolment continues to be attributable to interprovincial migration and non-Canadian student registrations through the CBE Welcome Centre, despite the overall decline in enrolment in pre-K, Kindergarten and Division I.

**JOANNE PITMAN**  
**CHIEF SUPERINTENDENT OF SCHOOLS**

### ATTACHMENTS

Attachment I:	Welcome Centre Student Registrations 2025-2026
Attachment II:	End-September 2025 enrolment including out of attendance area
Attachment III:	CBE actual enrolment 2015-2025
Attachment IV:	Student population change by community
Attachment V:	Alternative program enrolment by school and grade
Attachment VI:	Specialized classes 2025-2026
Attachment VII:	Enrolment in specialized classes by school and by grade
Attachment VIII:	Specialized classes definitions
Attachment IX:	School capacity and utilization 2025-2026
Attachment X:	Leased space in operating CBE schools 2025-2026
Attachment XI:	Lease of surplus school facilities 2025-2026

### GLOSSARY – Developed by the Board of Trustees

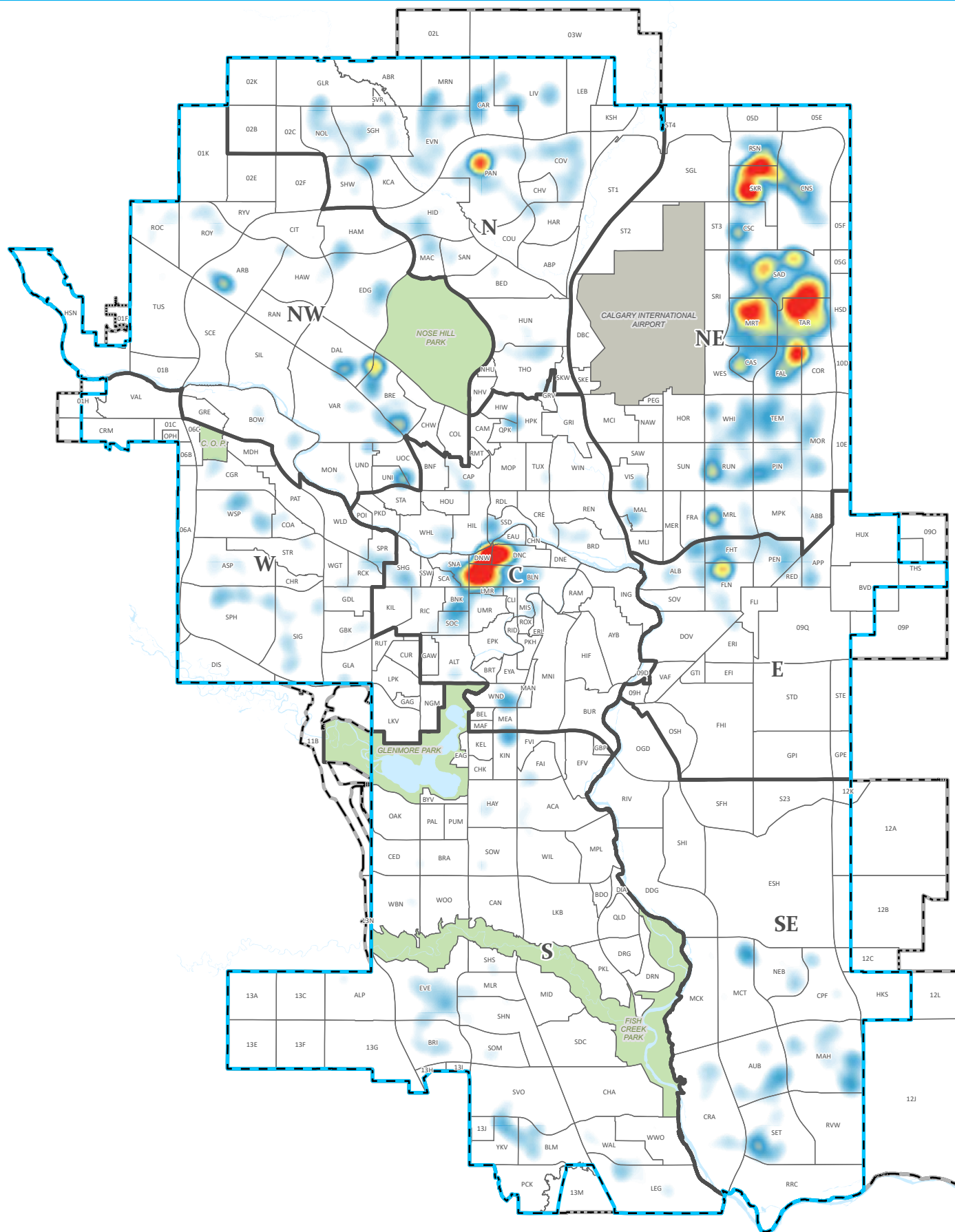
Board: Board of Trustees

Governance Culture: The Board defined in policy the individual and collective behaviour required to establish a culture of good governance. These policies establish standards for how the Board performs its work, including policies that define the Board's job, its purpose and its accountability.

Board/Chief Superintendent Relationship: The Board defined in policy the degree of authority delegated to the Chief Superintendent, and set out how the Chief Superintendent's performance, and ultimately the organization's performance, will be evaluated.

Results: These policies define the outcome the organization is expected to achieve for each student it serves. The Results policies are the performance targets for the Chief Superintendent and the organization, and form the basis for judging the success of the organization and the Chief Superintendent on reasonable progress towards achieving the Results.

Operational Expectations: These policies define both the non-negotiable expectations and the clear boundaries within which the Chief Superintendent and staff must operate. The Chief Superintendent is required to comply with the Board's stated values about operational conditions and actions as set out in these policies.



**CALGARY BOARD OF EDUCATION**  
**End-September 2025 enrolment including out-of-attendance area**

Attachment II

Schools highlighted in grey offer full-day kindergarten program.

SCSE = Self Contained Special Ed and represents system classes at the school level such as ACCESS, ALP, CSSI, etc.

SCHOOL		Total	Pre-K*	K	GR1	GR2	GR3	GR4	GR5	GR6	GR7	GR8	GR9	GR10	GR11	GR12	SCSE	OOA
Arbour Lake School		722	-	-	-	-	-	-	-	145	164	169	206	-	-	-	38	14
Belvedere Parkway School		451	-	50	64	71	52	65	64	75	-	-	-	-	-	-	10	7
Bowcroft School		200	-	13	29	29	35	38	32	24	-	-	-	-	-	-		12
Bowcroft School	German Bilingual	155	-	24	26	19	31	22	14	19	-	-	-	-	-	-		1
Bowness High School		1,457	-	-	-	-	-	-	-	-	-	-	-	482	449	510	16	185
Brentwood School	Traditional Learning	809	-	96	124	126	124	121	107	111	-	-	-	-	-	-		27
Captain John Palliser School		266	-	8	22	22	39	39	33	89	-	-	-	-	-	-	14	28
Captain John Palliser School	Montessori	311	-	59	47	49	47	55	29	25	-	-	-	-	-	-	-	
Citadel Park School		500	-	64	80	79	92	116	69	-	-	-	-	-	-	-		1
Dr. E. W. Coffin School		180	-	11	22	28	29	26	29	35	-	-	-	-	-	-		48
Edgemont School		573	-	45	81	91	119	125	112	-	-	-	-	-	-	-		11
Eric Harvie School		467	-	63	77	77	93	87	70	-	-	-	-	-	-	-		18
F. E. Osborne School		445	-	-	-	-	-	-	-	-	144	151	150	-	-	-		18
F. E. Osborne School	French Immersion	212	-	-	-	-	-	-	-	82	50	43	37	-	-	-		10
H. D. Cartwright School		482	-	-	-	-	-	-	-	-	144	134	173	-	-	-	31	21
The Hamptons School		196	-	21	30	20	36	48	41	-	-	-	-	-	-	-		3
Hawkwood School		699	-	78	98	106	114	122	115	66	-	-	-	-	-	-		9
Marion Carson School		247	-	23	27	38	30	59	34	36	-	-	-	-	-	-		1
Marion Carson School	Chinese (Mandarin) Bilingual	254	-	52	52	52	54	44	-	-	-	-	-	-	-	-		
Ranchlands School		393	-	34	58	63	55	51	56	57	-	-	-	-	-	-	19	4
Robert Thirsk High School		1,429	-	-	-	-	-	-	-	-	-	-	-	419	451	516	43	54
Royal Oak School		555	-	72	110	115	125	133	-	-	-	-	-	-	-	-		2
Scenic Acres School		186	-	25	34	29	31	39	28	-	-	-	-	-	-	-		14
Silver Springs School		250	-	30	34	37	37	44	39	29	-	-	-	-	-	-		4
Simon Fraser School		658	-	-	-	-	-	-	112	82	140	169	155	-	-	-		6
Sir Winston Churchill High School		2,151	-	-	-	-	-	-	-	-	-	-	-	725	670	735	21	86
Terrace Road School		223	-	31	32	28	25	39	22	34	-	-	-	-	-	-	12	14
Thomas B. Riley School		212	-	-	-	-	-	-	-	-	62	60	64	-	-	-	26	9
Thomas B. Riley School	Traditional Learning	264	-	-	-	-	-	-	-	-	82	92	90	-	-	-	-	3
Tom Baines School		805	-	-	-	-	-	-	-	159	209	216	221	-	-	-		13
Tuscany School		232	-	24	25	35	43	41	46	-	-	-	-	-	-	-	18	9
Tuscany School	French Immersion	342	-	56	70	63	54	56	43	-	-	-	-	-	-	-	-	3
Twelve Mile Coulee School		707	-	-	-	-	-	-	-	163	174	189	181	-	-	-		38
West Dalhousie School		280	-	19	34	36	32	45	48	48	-	-	-	-	-	-	18	12
William D. Pratt School		884	-	-	-	-	-	-	126	186	192	186	191	-	-	-	3	8
<b>AREA 1 TOTAL</b>		<b>18,197</b>	<b>-</b>	<b>898</b>	<b>1,176</b>	<b>1,213</b>	<b>1,297</b>	<b>1,415</b>	<b>1,269</b>	<b>1,465</b>	<b>1,361</b>	<b>1,409</b>	<b>1,468</b>	<b>1,626</b>	<b>1,570</b>	<b>1,761</b>	<b>269</b>	<b>693</b>

**CALGARY BOARD OF EDUCATION**
**End-September 2025 enrolment including out-of-attendance area**

Attachment II

Schools highlighted in grey offer full-day kindergarten program.

SCSE = Self Contained Special Ed and represents system classes at the school level such as ACCESS, ALP, CSSI, etc.

SCHOOL		Total	Pre-K*	K	GR1	GR2	GR3	GR4	GR5	GR6	GR7	GR8	GR9	GR10	GR11	GR12	SCSE	OOA
Alex Munro School		306	-	22	52	43	52	57	33	47	-	-	-	-	-	-		44
Balmoral School	Traditional Learning	554	-	-	-	-	-	-	103	120	113	116	102	-	-	-		7
Banff Trail School	French Immersion	409	-	59	77	77	73	62	61	-	-	-	-	-	-	-		4
Beddington Heights School		426	-	35	63	63	77	54	60	65	-	-	-	-	-	-	9	29
Branton School	French Immersion	746	-	-	-	-	-	-	-	117	210	225	177	-	-	-	17	33
Buchanan School		176	-	23	22	32	21	21	22	18	-	-	-	-	-	-	17	9
Buffalo Rubbing Stone School		604	-	82	78	95	125	125	99	-	-	-	-	-	-	-		19
Cambrian Heights School		449	-	46	61	69	78	67	66	52	-	-	-	-	-	-	10	
Capitol Hill School		310	-	24	44	39	33	53	56	61	-	-	-	-	-	-		7
Captain Nichola Goddard School		993	-	-	-	-	-	-	-	225	234	276	258	-	-	-		14
Catherine Nichols Gunn School		436	-	55	87	72	54	69	43	56	-	-	-	-	-	-		16
Collingwood School	Spanish Bilingual	548	-	65	84	85	86	83	74	71	-	-	-	-	-	-		6
Colonel Irvine School		355	-	-	-	-	-	-	-	-	102	129	114	-	-	-	10	2
Colonel Irvine School	Chinese (Mandarin) Bilingual	436	-	-	-	-	-	-	99	88	93	84	72	-	-	-	-	
Colonel Sanders School	Traditional Learning	406	-	-	96	101	105	104	-	-	-	-	-	-	-	-		5
Dalhousie School	Spanish Bilingual	518	-	71	79	77	73	69	78	71	-	-	-	-	-	-		6
Dr. J. K. Mulloy School	Traditional Learning	519	-	100	103	107	105	104	-	-	-	-	-	-	-	-		8
Georges P. Vanier School		181	-	-	-	-	-	-	-	-	49	58	49	-	-	-	25	18
Georges P. Vanier School	French Immersion	412	-	-	-	-	-	-	-	86	105	115	106	-	-	-	-	10
Highwood School	Chinese (Mandarin) Bilingual	366	-	75	76	67	75	73	-	-	-	-	-	-	-	-		5
Huntington Hills School		220	-	11	31	31	38	28	35	31	-	-	-	-	-	-	15	13
James Fowler High School		1,618	-	-	-	-	-	-	-	-	-	-	-	462	501	580	75	71
John G. Diefenbaker High School		1,419	-	-	-	-	-	-	-	-	-	-	-	495	476	448		32
Kenneth D. Taylor		671	-	107	142	139	130	135	-	-	-	-	-	-	-	-	18	3
King George School	French Immersion	649	-	89	121	127	121	105	86	-	-	-	-	-	-	-		3
North Haven School		236	-	21	28	37	37	41	22	24	-	-	-	-	-	-	26	10
Panorama Hills School		489	-	59	71	72	93	88	80	-	-	-	-	-	-	-	26	14
Senator Patrick Burns School		147	-	-	-	-	-	-	-	-	39	46	48	-	-	-	14	12
Senator Patrick Burns School	Spanish Bilingual	405	-	-	-	-	-	-	-	-	139	150	116	-	-	-	-	3
Sir John A. Macdonald School		640	-	-	-	-	-	-	-	-	180	216	214	-	-	-	30	24
Sir John Franklin School	System Classes	63	-	-	-	-	-	-	-	-	-	-	-	-	-	-	63	
Sir John Franklin School	Arts Centered Learning	281	-	-	-	-	-	-	12	24	82	90	73	-	-	-	-	3
Thorncliffe School		203	-	15	25	28	35	27	26	47	-	-	-	-	-	-		27
Thorncliffe School	Traditional Learning	66	-	66	-	-	-	-	-	-	-	-	-	-	-	-		2
Varsity Acres School	French Immersion	559	-	68	103	92	104	122	70	-	-	-	-	-	-	-		6
W. O. Mitchell School	Spanish Bilingual	387	-	57	68	57	58	52	53	42	-	-	-	-	-	-		7

**CALGARY BOARD OF EDUCATION**  
**End-September 2025 enrolment including out-of-attendance area**

Attachment II

Schools highlighted in grey offer full-day kindergarten program.

SCSE = Self Contained Special Ed and represents system classes at the school level such as ACCESS, ALP, CSSI, etc.

SCHOOL		Total	Pre-K*	K	GR1	GR2	GR3	GR4	GR5	GR6	GR7	GR8	GR9	GR10	GR11	GR12	SCSE	OOA
William Aberhart High School		505	-	-	-	-	-	-	-	-	-	-	-	145	144	180	36	172
William Aberhart High School	French Immersion	809	-	-	-	-	-	-	-	-	-	-	-	306	276	227	-	11
<b>AREA 2 TOTAL</b>		<b>18,517</b>	<b>-</b>	<b>1,150</b>	<b>1,511</b>	<b>1,510</b>	<b>1,573</b>	<b>1,539</b>	<b>1,178</b>	<b>1,245</b>	<b>1,346</b>	<b>1,505</b>	<b>1,329</b>	<b>1,408</b>	<b>1,397</b>	<b>1,435</b>	<b>391</b>	<b>655</b>
Abbeydale School		342	-	34	60	43	57	46	42	52	-	-	-	-	-	-	8	16
Belfast School		166	-	16	22	20	21	17	27	24	-	-	-	-	-	-	19	82
Cappy Smart School		234	-	35	30	35	36	27	30	22	-	-	-	-	-	-	19	17
Colonel Macleod School		200	-	-	-	-	-	-	-	-	55	56	63	-	-	-	26	6
Colonel Macleod School	Traditional Learning	463	-	-	-	-	-	-	97	98	97	92	79	-	-	-	-	5
Coventry Hills School		585	-	69	98	72	113	126	107	-	-	-	-	-	-	-	-	5
Crescent Heights High School		1,359	-	-	-	-	-	-	-	-	-	-	-	420	417	455	67	363
Crescent Heights High School	Spanish Bilingual	258	-	-	-	-	-	-	-	-	-	-	-	89	90	79	-	-
Dr. Gladys McKelvie Egbert School		367	-	-	-	-	-	-	-	-	120	107	111	-	-	-	29	18
Erin Woods School		373	-	37	41	55	63	45	48	53	-	-	-	-	-	-	31	10
Ernest Morrow School		559	-	-	-	-	-	-	-	-	167	165	153	-	-	-	74	41
Forest Lawn High School		1,467	-	-	-	-	-	-	-	-	-	-	-	481	405	482	99	77
G. W. Skene School		175	-	-	-	-	-	57	63	50	-	-	-	-	-	-	5	14
Hidden Valley School		296	-	38	61	57	68	72	-	-	-	-	-	-	-	-	-	2
Hidden Valley School	French Immersion	250	-	37	55	50	54	54	-	-	-	-	-	-	-	-	-	8
Ian Bazalgette School		342	-	-	-	-	-	-	-	-	84	151	107	-	-	-	-	17
Ian Bazalgette School	Science	158	-	-	-	-	-	-	-	-	57	56	45	-	-	-	-	-
Jack James High School		379	-	-	-	-	-	-	-	-	-	-	-	114	92	139	34	1
James Short Memorial School		234	-	68	62	54	50	-	-	-	-	-	-	-	-	-	-	9
Keeler School		547	-	81	70	87	85	86	75	63	-	-	-	-	-	-	-	11
Mount View School		179	-	19	26	27	22	30	24	20	-	-	-	-	-	-	11	18
North Trail High School		2,089	-	-	-	-	-	-	-	-	-	-	-	628	730	706	25	16
Northern Lights School		581	-	84	91	97	98	112	99	-	-	-	-	-	-	-	-	6
Nose Creek School		980	-	-	-	-	-	-	-	221	237	250	236	-	-	-	36	13
Patrick Airlie School		219	-	26	32	25	37	34	29	36	-	-	-	-	-	-	-	20
Penbrooke Meadows School		223	-	18	31	40	27	37	23	27	-	-	-	-	-	-	20	16
Radisson Park School		366	-	47	47	48	58	62	49	55	-	-	-	-	-	-	-	19
Riverside School	System Classes	6	-	-	-	-	-	-	-	-	-	-	-	-	-	-	6	-
Riverside School	Science	649	-	50	50	50	50	56	59	59	98	94	83	-	-	-	-	10
Roland Michener School		178	-	19	11	24	23	29	28	22	-	-	-	-	-	-	22	19
Rosedale School		248	-	16	18	23	22	30	33	15	27	29	35	-	-	-	-	29



**CALGARY BOARD OF EDUCATION**  
**End-September 2025 enrolment including out-of-attendance area**

Attachment II

Schools highlighted in grey offer full-day kindergarten program.

SCSE = Self Contained Special Ed and represents system classes at the school level such as ACCESS, ALP, CSSI, etc.

SCHOOL		Total	Pre-K*	K	GR1	GR2	GR3	GR4	GR5	GR6	GR7	GR8	GR9	GR10	GR11	GR12	SCSE	OOA
Rosemont School		203	-	20	30	26	28	32	26	31	-	-	-	-	-	-	10	17
Stanley Jones School		328	-	41	58	62	62	38	31	36	-	-	-	-	-	-		15
Stanley Jones School	Alice Jamieson	112	-	-	-	-	-	12	26	17	22	19	16	-	-	-		
Sunnyside School		175	-	26	21	30	22	25	25	26	-	-	-	-	-	-		33
Valley Creek School		552	-	-	-	-	-	-	68	75	129	129	133	-	-	-	18	4
Valley Creek School	French Immersion	247	-	-	-	-	-	-	57	57	41	54	38	-	-	-	-	3
Valley View School		232	-	34	28	37	32	34	34	33	-	-	-	-	-	-		14
Valley View School	Science	343	-	45	49	50	50	50	50	49	-	-	-	-	-	-	-	
Vista Heights School		126	-	16	23	10	19	15	16	14	-	-	-	-	-	-	13	4
West Dover School		239	-	22	27	45	31	33	31	34	-	-	-	-	-	-	16	24
<b>AREA 3 TOTAL</b>		<b>17,029</b>	<b>-</b>	<b>898</b>	<b>1,041</b>	<b>1,067</b>	<b>1,128</b>	<b>1,159</b>	<b>1,197</b>	<b>1,189</b>	<b>1,134</b>	<b>1,202</b>	<b>1,099</b>	<b>1,732</b>	<b>1,734</b>	<b>1,861</b>	<b>588</b>	<b>982</b>
Annie Foote School		448	-	70	72	89	64	59	41	53	-	-	-	-	-	-		23
Annie Gale School		346	-	-	-	-	-	-	-	-	99	104	117	-	-	-	26	8
Annie Gale School	Traditional Learning	240	-	-	-	-	-	-	-	59	61	57	63	-	-	-	-	
Bob Edwards School		357	-	-	-	-	-	-	-	90	91	93	79	-	-	-	4	15
Bob Edwards School	French Immersion	184	-	-	-	-	-	-	-	-	62	66	56	-	-	-	-	1
Cecil Swanson School		325	-	39	54	42	43	49	42	43	-	-	-	-	-	-	13	34
Chief Justice Milvain School		206	-	25	34	32	28	23	33	31	-	-	-	-	-	-		5
Chief Justice Milvain School	Traditional Learning	375	-	51	50	50	75	75	74	-	-	-	-	-	-	-		1
Chris Akkerman School	Traditional Learning	655	-	102	101	102	105	120	125	-	-	-	-	-	-	-		2
Clarence Sansom School		776	-	-	-	-	-	-	-	-	199	230	310	-	-	-	37	19
Colonel J. Fred Scott School		382	-	46	39	55	62	52	68	60	-	-	-	-	-	-		20
Crossing Park School		1,017	-	58	87	73	85	101	66	103	171	150	112	-	-	-	11	21
Douglas Harkness School		303	-	43	33	39	51	43	44	50	-	-	-	-	-	-		3
Dr. Gordon Higgins School		692	-	-	-	-	-	-	-	-	216	219	228	-	-	-	29	14
Falconridge School		505	-	58	72	72	83	74	59	70	-	-	-	-	-	-	17	32
Grant MacEwan School		718	-	87	110	95	115	97	106	108	-	-	-	-	-	-		7
Guy Weadick School		453	-	58	73	75	84	64	47	52	-	-	-	-	-	-		5
Hugh A. Bennett School		702	-	143	147	149	137	109	-	-	-	-	-	-	-	-	17	8
Lester B. Pearson High School		1,612	-	-	-	-	-	-	-	-	-	-	-	478	526	568	40	62
Louise Dean School		28	-	-	-	-	-	-	-	-	-	-	1	2	4	21		
Manmeet Singh Bhullar School		540	-	62	71	84	99	83	79	62	-	-	-	-	-	-		10
Marlborough School		308	-	52	56	48	67	41	44	-	-	-	-	-	-	-		7
Mayland Heights School		144	-	19	12	22	20	30	18	23	-	-	-	-	-	-		46
Mayland Heights School	French Immersion	288	-	36	74	44	45	28	30	31	-	-	-	-	-	-		3
Monterey Park School		587	-	62	108	88	91	79	66	66	-	-	-	-	-	-	27	5
Nelson Mandela High School		1,978	-	-	-	-	-	-	-	-	-	-	-	636	639	637	66	32
O. S. Geiger School		506	-	63	71	72	72	73	63	66	-	-	-	-	-	-	26	2
Peter Lougheed School		1,033	-	-	-	-	-	-	209	206	179	208	197	-	-	-	34	
Pineridge School		339	-	11	28	42	34	27	70	96	-	-	-	-	-	-	31	26

**CALGARY BOARD OF EDUCATION**  
**End-September 2025 enrolment including out-of-attendance area**

Attachment II

Schools highlighted in grey offer full-day kindergarten program.

SCSE = Self Contained Special Ed and represents system classes at the school level such as ACCESS, ALP, CSSI, etc.

SCHOOL		Total	Pre-K*	K	GR1	GR2	GR3	GR4	GR5	GR6	GR7	GR8	GR9	GR10	GR11	GR12	SCSE	OOA
Prairie Sky School		1,142	-	99	99	99	128	130	109	130	118	114	116	-	-	-		15
Rundle School		512	-	72	91	85	70	73	80	41	-	-	-	-	-	-		1
Saddle Ridge School		644	-	124	131	129	129	131	-	-	-	-	-	-	-	-		
Sir Wilfrid Laurier School	Traditional Learning	479	-	-	-	-	-	-	-	123	123	118	111	-	-	-	4	18
Taradale School		675	-	126	150	137	131	131	-	-	-	-	-	-	-	-		9
Ted Harrison School		907	-	-	-	-	-	-	157	175	187	181	185	-	-	-	22	10
Terry Fox School		618	-	-	-	-	-	-	-	-	207	166	199	-	-	-	46	10
<b>AREA 4 TOTAL</b>		<b>21,024</b>	<b>-</b>	<b>1,506</b>	<b>1,763</b>	<b>1,723</b>	<b>1,818</b>	<b>1,692</b>	<b>1,630</b>	<b>1,738</b>	<b>1,713</b>	<b>1,706</b>	<b>1,774</b>	<b>1,116</b>	<b>1,169</b>	<b>1,226</b>	<b>450</b>	<b>474</b>
Acadia School		427	-	43	62	58	72	69	56	67	-	-	-	-	-	-		15
Auburn Bay School		540	-	62	88	81	97	92	103	-	-	-	-	-	-	-	17	18
Bayside School		625	-	56	92	107	126	126	118	-	-	-	-	-	-	-		13
Bridlewood School		508	-	59	69	62	83	88	83	64	-	-	-	-	-	-		33
Centennial High School		1,781	-	-	-	-	-	-	-	-	-	-	-	554	597	585	45	61
Chaparral School		514	-	52	80	74	89	76	76	67	-	-	-	-	-	-		2
Copperfield School		587	-	67	98	109	119	93	101	-	-	-	-	-	-	-		5
Cranston School		601	-	76	129	133	128	135	-	-	-	-	-	-	-	-		2
Deer Run School		325	-	38	44	39	59	51	47	38	-	-	-	-	-	-	9	12
Douglasdale School		361	-	43	63	62	48	78	67	-	-	-	-	-	-	-		9
Dr. George Stanley School		962	-	-	-	-	-	-	132	199	226	205	200	-	-	-		16
Dr. Martha Cohen School		907	-	-	-	-	-	-	-	214	227	227	239	-	-	-		16
Fairview School	Traditional Learning	947	-	-	-	-	-	161	165	162	155	153	151	-	-	-		3
Fish Creek School		575	-	62	77	73	82	76	100	105	-	-	-	-	-	-		58
Haultain Memorial School		167	-	17	29	17	18	32	20	28	-	-	-	-	-	-	6	9
Joane Cardinal-Schubert High School		1,836	-	-	-	-	-	-	-	-	-	-	-	529	625	672	10	34
Lake Bonavista School	Montessori	402	-	72	69	67	73	45	38	38	-	-	-	-	-	-		
Lakeshore School		979	-	-	-	-	-	-	-	247	192	295	245	-	-	-		1
Le Roi Daniels School	Traditional Learning	608	-	146	149	157	156	-	-	-	-	-	-	-	-	-		
Lord Beaverbrook High School		2,055	-	-	-	-	-	-	-	-	-	-	-	709	701	581	64	92
Mahogany School		859	-	135	149	147	157	162	109	-	-	-	-	-	-	-		
Maple Ridge School	Science	410	-	88	75	73	95	79	-	-	-	-	-	-	-	-		1
McKenzie Highlands School		742	-	-	-	-	-	32	111	117	142	150	133	-	-	-	57	43
McKenzie Lake School		614	-	77	91	99	125	108	96	-	-	-	-	-	-	-	18	9
McKenzie Towne School		547	-	89	109	132	112	80	-	-	-	-	-	-	-	-	25	3
Midnapore School		269	-	19	27	35	46	48	35	47	-	-	-	-	-	-	12	26
Midnapore School	Chinese (Mandarin) Bilingual	170	-	32	37	41	32	28	-	-	-	-	-	-	-	-	-	3

**CALGARY BOARD OF EDUCATION**  
**End-September 2025 enrolment including out-of-attendance area**

Attachment II

Schools highlighted in grey offer full-day kindergarten program.

SCSE = Self Contained Special Ed and represents system classes at the school level such as ACCESS, ALP, CSSI, etc.

SCHOOL		Total	Pre-K*	K	GR1	GR2	GR3	GR4	GR5	GR6	GR7	GR8	GR9	GR10	GR11	GR12	SCSE	OOA
MidSun School		632	-	-	-	-	-	-	-	-	177	217	205	-	-	-	33	33
Mountain Park School		584	-	-	-	-	-	-	-	139	139	137	153	-	-	-	16	19
New Brighton School		576	-	74	106	85	117	90	104	-	-	-	-	-	-	-		1
Prince Of Wales School		338	-	44	70	60	69	74	7	14	-	-	-	-	-	-		5
R. T. Alderman School	Science	700	-	-	-	-	-	-	120	124	174	136	146	-	-	-		6
Samuel W. Shaw School		844	-	-	-	-	-	-	98	125	186	190	213	-	-	-	32	16
Sibylla Kiddle School		571	-	70	91	96	103	102	109	-	-	-	-	-	-	-		33
Somerset School		208	-	30	34	51	52	41	-	-	-	-	-	-	-	-		10
Willow Park School	Arts Centered Learning	592	-	-	-	-	-	-	59	113	146	132	142	-	-	-		5
Wilma Hansen School		371	-	-	-	-	-	-	22	45	81	100	98	-	-	-	25	17
<b>AREA 5 TOTAL</b>		<b>24,734</b>	<b>-</b>	<b>1,451</b>	<b>1,838</b>	<b>1,858</b>	<b>2,058</b>	<b>1,966</b>	<b>1,976</b>	<b>1,953</b>	<b>1,845</b>	<b>1,942</b>	<b>1,925</b>	<b>1,792</b>	<b>1,923</b>	<b>1,838</b>	<b>369</b>	<b>629</b>
A. E. Cross School		501	-	-	-	-	-	-	-	-	129	147	196	-	-	-	29	32
A. E. Cross School	Spanish Bilingual	58	-	-	-	-	-	-	-	-	25	20	13	-	-	-	-	8
Altadore School		355	-	43	50	60	57	51	52	42	-	-	-	-	-	-		7
Alternative High School		118	-	-	-	-	-	-	-	-	-	-	-	16	23	51	28	
Andrew Sibbald School		310	-	40	49	52	62	55	52	-	-	-	-	-	-	-		10
Banting and Best School		176	-	41	48	47	40	-	-	-	-	-	-	-	-	-		11
Braeside School		205	-	21	25	27	36	40	23	33	-	-	-	-	-	-		23
Canyon Meadows School	Spanish Bilingual	431	-	75	87	70	77	62	60	-	-	-	-	-	-	-		35
Cedarbrae School		187	-	20	17	24	31	30	30	28	-	-	-	-	-	-	7	37
Central Memorial High School		1,568	-	-	-	-	-	-	-	-	-	-	-	554	457	536	21	125
Chinook Park School		244	-	17	38	43	44	26	40	36	-	-	-	-	-	-		18
Chinook Park School	French Immersion	298	-	47	54	44	47	37	39	30	-	-	-	-	-	-		12
David Thompson School		139	-	-	-	-	-	-	-	-	42	53	44	-	-	-		11
David Thompson School	French Immersion	541	-	-	-	-	-	-	78	78	138	126	121	-	-	-		14
Dr. E. P. Scarlett High School		1,432	-	-	-	-	-	-	-	-	-	-	-	487	476	464	5	96
Dr. E. P. Scarlett High School	French Immersion	394	-	-	-	-	-	-	-	-	-	-	-	138	130	126	-	1
Dr. Freda Miller School		473	-	43	73	74	83	104	96	-	-	-	-	-	-	-		13
Ethel M. Johnson School		315	-	24	34	30	46	48	46	41	-	-	-	-	-	-	46	9
Eugene Coste School	Spanish Bilingual	412	-	61	88	65	76	62	60	-	-	-	-	-	-	-		57
Evergreen School		519	-	67	79	78	77	102	99	-	-	-	-	-	-	-	17	31
Glenbrook School		278	-	24	39	46	36	50	28	55	-	-	-	-	-	-		19
Glenmeadows School	Spanish Bilingual	392	-	66	62	71	68	60	36	29	-	-	-	-	-	-		19
Harold Panabaker School		299	-	-	-	-	-	-	-	-	84	90	105	-	-	-	20	13
Harold Panabaker School	Chinese (Mandarin) Bilingual	100	-	-	-	-	-	-	13	27	20	19	21	-	-	-	-	2
Haysboro School		234	-	23	33	36	41	40	33	28	-	-	-	-	-	-		15
Henry Wise Wood High School		1,860	-	-	-	-	-	-	-	-	-	-	-	582	616	634	28	75
Janet Johnstone School		281	-	33	51	63	68	66	-	-	-	-	-	-	-	-		7
Janet Johnstone School	French Immersion	217	-	45	59	39	47	27	-	-	-	-	-	-	-	-		2
John Ware School		380	-	-	-	-	-	-	-	-	127	104	137	-	-	-	12	30

**CALGARY BOARD OF EDUCATION**  
**End-September 2025 enrolment including out-of-attendance area**

Attachment II

Schools highlighted in grey offer full-day kindergarten program.

SCSE = Self Contained Special Ed and represents system classes at the school level such as ACCESS, ALP, CSSI, etc.

SCHOOL		Total	Pre-K*	K	GR1	GR2	GR3	GR4	GR5	GR6	GR7	GR8	GR9	GR10	GR11	GR12	SCSE	OOA
Louis Riel School	System Classes	132	-	-	-	-	-	7	23	28	32	22	20	-	-	-		
Louis Riel School	Science	774	-	66	66	66	76	81	56	85	96	92	90	-	-	-		10
Marshall Springs School		707	-	-	-	-	-	-	-	167	174	174	186	-	-	-	6	21
Nellie McClung School		357	-	36	49	58	61	50	49	54	-	-	-	-	-	-		53
Nickle School		472	-	-	-	-	-	-	-	124	166	58	84	-	-	-	40	18
Riverbend School		298	-	41	42	55	57	44	28	31	-	-	-	-	-	-		20
Robert Warren School	Spanish Bilingual	315	-	-	-	-	-	-	-	103	79	74	59	-	-	-		
Ron Southern School		522	-	69	68	68	91	72	68	68	-	-	-	-	-	-	18	5
Sam Livingston School	French Immersion	400	-	76	81	72	92	79	-	-	-	-	-	-	-	-		17
Sherwood School		332	-	-	-	-	-	46	32	58	65	58	73	-	-	-		14
Sundance School	French Immersion	569	-	88	100	95	85	81	56	64	-	-	-	-	-	-		8
Woodbine School		387	-	48	58	61	49	67	52	48	-	-	-	-	-	-	4	11
Woodlands School		257	-	29	38	44	36	40	33	28	-	-	-	-	-	-	9	21
Woodman School		241	-	-	-	-	-	-	-	-	66	76	99	-	-	-		25
Woodman School	French Immersion	303	-	-	-	-	-	-	29	33	93	90	58	-	-	-		10
<b>AREA 6 TOTAL</b>		<b>18,783</b>	<b>-</b>	<b>1,143</b>	<b>1,388</b>	<b>1,388</b>	<b>1,483</b>	<b>1,427</b>	<b>1,211</b>	<b>1,318</b>	<b>1,336</b>	<b>1,203</b>	<b>1,306</b>	<b>1,777</b>	<b>1,702</b>	<b>1,811</b>	<b>290</b>	<b>965</b>
Alexander Ferguson School		208	-	12	31	39	37	24	28	37	-	-	-	-	-	-		27
Battalion Park School		465	-	27	61	54	79	78	66	82	-	-	-	-	-	-	18	6
Bishop Pinkham School		173	-	-	-	-	-	-	-	-	47	61	59	-	-	-	6	14
Bishop Pinkham School	French Immersion	456	-	-	-	-	-	-	-	-	188	154	114	-	-	-	-	5
Briar Hill School		210	-	27	27	34	33	30	29	30	-	-	-	-	-	-		87
Colonel Walker School		185	-	25	28	32	32	27	17	19	-	-	-	-	-	-	5	7
Connaught School		545	-	90	115	74	66	75	66	59	-	-	-	-	-	-		10
Dr. Roberta Bondar School		560	-	49	73	75	91	94	92	86	-	-	-	-	-	-		12
Earl Grey School		246	-	12	23	46	38	38	45	30	-	-	-	-	-	-	14	29
Elbow Park School		228	-	23	37	33	37	32	35	31	-	-	-	-	-	-		1
Elboya School		232	-	-	-	-	-	42	41	41	33	38	37	-	-	-		11
Elboya School	French Immersion	329	-	-	-	-	-	-	45	59	88	73	64	-	-	-		8
Ernest Manning High School		2,005	-	-	-	-	-	-	-	-	-	-	-	641	670	680	14	62
Glamorgan School	Traditional Learning	758	-	82	78	76	81	81	83	84	66	63	64	-	-	-		2
Glendale School		224	-	17	25	41	33	38	35	35	-	-	-	-	-	-		33
Griffith Woods School		968	-	72	68	97	82	104	84	112	117	120	112	-	-	-		4
Hillhurst School		281	-	16	29	20	35	62	48	71	-	-	-	-	-	-		49
Jennie Elliott School		540	-	61	69	77	87	62	73	71	-	-	-	-	-	-	40	7
Killarney School	Montessori	347	-	61	66	58	51	42	31	38	-	-	-	-	-	-		10
Mount Royal School		426	-	-	-	-	-	-	-	-	156	131	133	-	-	-	6	16
Olympic Heights School		479	-	50	63	68	68	98	68	64	-	-	-	-	-	-		22
Queen Elizabeth School		430	-	47	52	63	68	76	55	69	-	-	-	-	-	-		13
Queen Elizabeth High School		932	-	-	-	-	-	-	-	-	160	155	171	135	119	109	83	112
Ramsay School		276	-	21	41	50	48	40	37	39	-	-	-	-	-	-		9

**CALGARY BOARD OF EDUCATION**  
**End-September 2025 enrolment including out-of-attendance area**

Attachment II

Schools highlighted in grey offer full-day kindergarten program.

SCSE = Self Contained Special Ed and represents system classes at the school level such as ACCESS, ALP, CSSI, etc.

SCHOOL		Total	Pre-K*	K	GR1	GR2	GR3	GR4	GR5	GR6	GR7	GR8	GR9	GR10	GR11	GR12	SCSE	OOA
Richmond School		365	-	43	55	59	47	50	55	56	-	-	-	-	-	-		26
Rideau Park School		439	-	24	30	32	34	30	30	33	76	75	75	-	-	-		26
Simons Valley School		654	-	73	85	100	101	100	86	100	-	-	-	-	-	-	9	23
Sunalta School		368	-	40	40	57	53	63	52	63	-	-	-	-	-	-		76
University School		316	-	35	54	38	44	58	35	43	-	-	-	-	-	-	9	25
Vincent Massey School		789	-	-	-	-	-	-	-	-	235	267	258	-	-	-	29	19
West Ridge School		844	-	-	-	-	-	-	156	159	150	189	190	-	-	-		21
West Springs School		591	-	77	131	117	125	141	-	-	-	-	-	-	-	-		1
Western Canada High School		1,547	-	-	-	-	-	-	-	-	-	-	-	489	525	533		53
Western Canada High School	French Immersion	676	-	-	-	-	-	-	-	-	-	-	-	216	224	236		19
Westgate School	French Immersion	607	-	80	92	104	81	81	73	96	-	-	-	-	-	-		2
Wildwood School		500	-	48	65	67	72	79	70	69	-	-	-	-	-	-	30	17
William Reid School	French Immersion	320	-	69	77	55	56	63	-	-	-	-	-	-	-	-		4
Windsor Park School		154	-	20	35	54	45	-	-	-	-	-	-	-	-	-		5
<b>AREA 7 TOTAL</b>		<b>19,673</b>	<b>-</b>	<b>1,201</b>	<b>1,550</b>	<b>1,620</b>	<b>1,624</b>	<b>1,708</b>	<b>1,535</b>	<b>1,676</b>	<b>1,316</b>	<b>1,326</b>	<b>1,277</b>	<b>1,481</b>	<b>1,538</b>	<b>1,558</b>	<b>263</b>	<b>873</b>
Piitoayis Family School	Colonel Walker	213	-	14	39	27	41	37	28	27	-	-	-	-	-	-		
<b>CENTRAL B TOTAL</b>		<b>213</b>	<b>-</b>	<b>14</b>	<b>39</b>	<b>27</b>	<b>41</b>	<b>37</b>	<b>28</b>	<b>27</b>	<b>-</b>	<b>-</b>	<b>-</b>	<b>-</b>	<b>-</b>	<b>-</b>		
<b>TOTAL</b>		<b>138,170</b>	<b>-</b>	<b>8,261</b>	<b>10,306</b>	<b>10,406</b>	<b>11,022</b>	<b>10,943</b>	<b>10,024</b>	<b>10,611</b>	<b>10,051</b>	<b>10,293</b>	<b>10,178</b>	<b>10,932</b>	<b>11,033</b>	<b>11,490</b>	<b>2,620</b>	<b>5,271</b>

**CALGARY BOARD OF EDUCATION**  
**End-September 2025 enrolment including out-of-attendance area**

Attachment II

Schools highlighted in grey offer full-day kindergarten program.

SCSE = Self Contained Special Ed and represents system classes at the school level such as ACCESS, ALP, CSSI, etc.

SCHOOL		Total	Pre-K*	K	GR1	GR2	GR3	GR4	GR5	GR6	GR7	GR8	GR9	GR10	GR11	GR12	SCSE	OOA
--------	--	-------	--------	---	-----	-----	-----	-----	-----	-----	-----	-----	-----	------	------	------	------	-----

**OUTREACH PROGRAMS (includes NEXUS)**

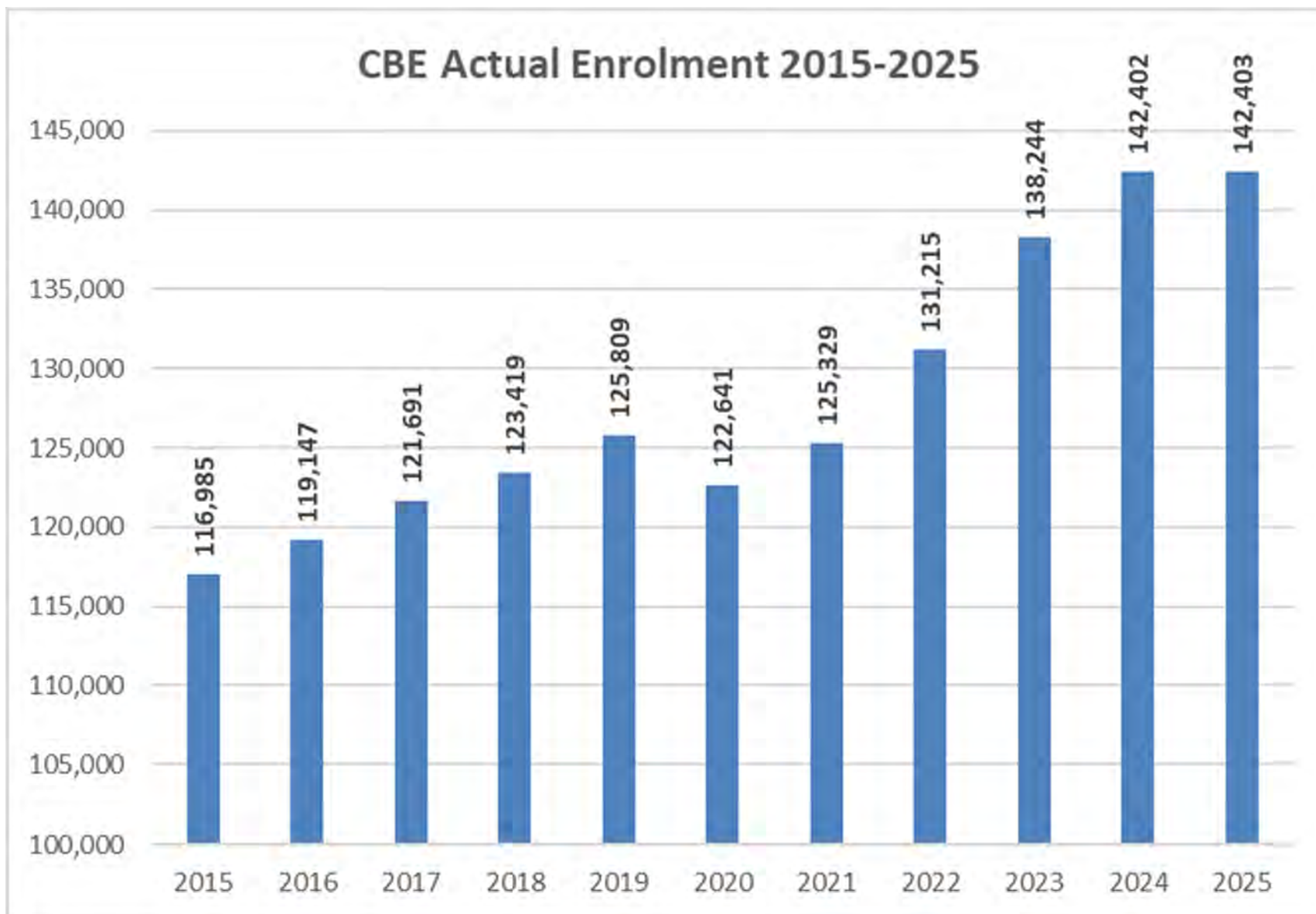
Discovering Choices	Downtown	302	-	-	-	-	-	-	-	-	-	-	-	-	25	262	15
Discovering Choices II	Marlborough	219	-	-	-	-	-	-	-	-	-	-	-	-	16	203	
Start Outreach - Bowness	Bowness	147	-	-	-	-	-	-	-	-	-	-	-	-	24	113	10
Westbrook Outreach	Westbrook	131	-	-	-	-	-	-	-	-	-	-	-	-	20	111	
<b>TOTAL OUTREACH PROGRAMS</b>		<b>799</b>	-	-	-	-	-	-	-	-	-	-	-	-	<b>85</b>	<b>689</b>	<b>25</b>

**UNIQUE SETTINGS**

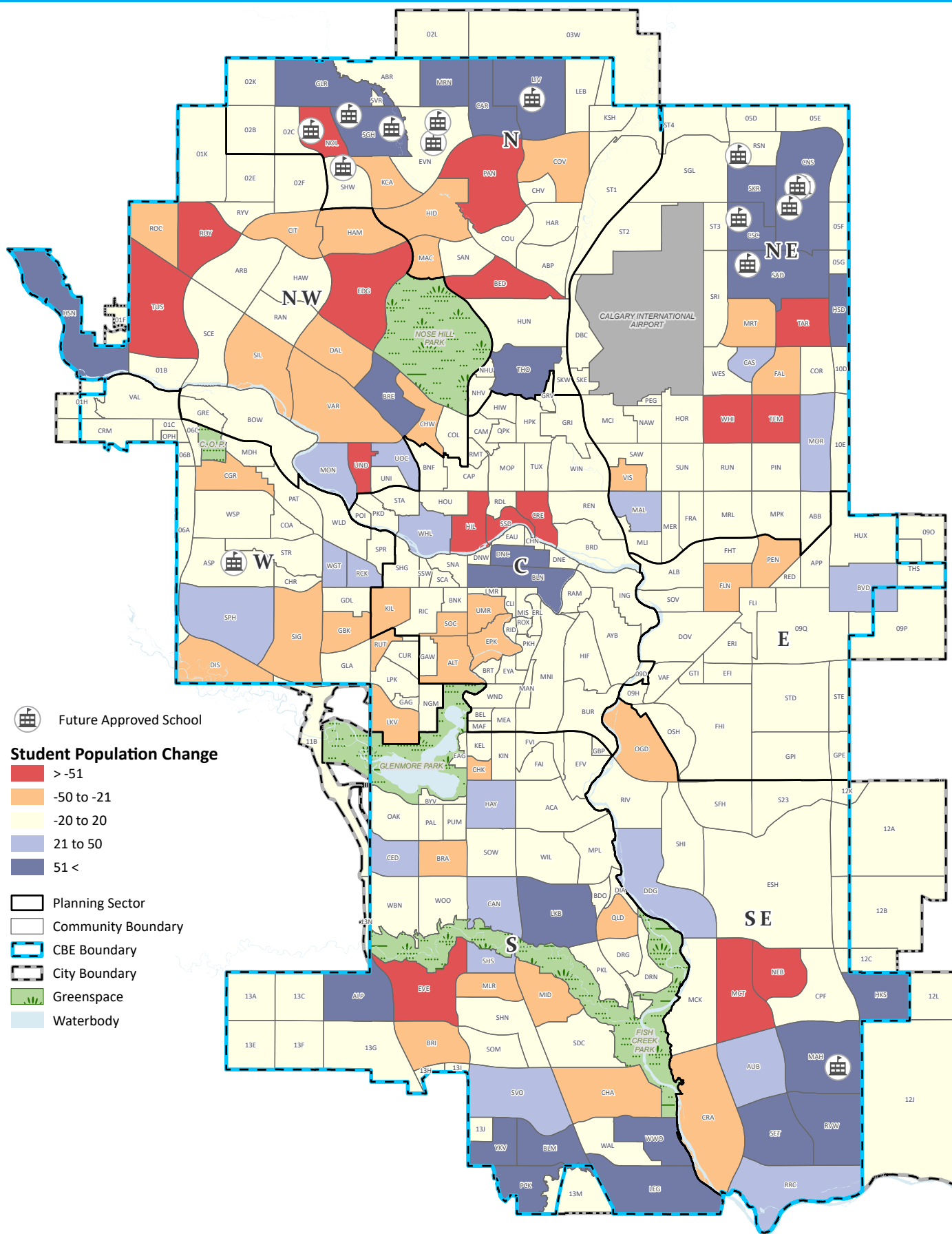
Adolescent Day Treatment Program	8	-	-	-	-	-	-	-	-	-	-	-	1	1	4	2	
Adolescent Mental Health Services	11	-	-	-	-	-	-	-	-	-	2	-	3	2	2	2	
Children's Village School	68	-	-	2	6	6	11	12	15	-	-	-	-	-	-	-	16
Christine Meikle School	113	-	-	-	-	-	-	-	2	9	11	22	21	21	27	-	
Dr. Gordon Townsend School	13	-	1	-	3	-	1	-	1	2	1	-	2	-	2		
Dr. Oakley School	197	-	-	-	-	2	24	49	60	44	12	6	-	-	-	-	
Emily Follensbee School	85	-	1	12	6	21	10	9	19	3	4	-	-	-	-	-	
Niitsitapi Learning Centre	179	33	47	58	41	-	-	-	-	-	-	-	-	-	-	-	
West View School	53	-	-	-	-	-	-	-	-	1	-	3	6	11	32		
William Roper Hull School	92	-	-	1	4	4	5	4	6	9	13	13	11	11	11		
Wood's Homes School	62	-	-	-	-	-	1	1	-	4	8	15	15	8	10		
<b>TOTAL UNIQUE SETTINGS</b>	<b>881</b>	<b>33</b>	<b>49</b>	<b>73</b>	<b>60</b>	<b>33</b>	<b>52</b>	<b>75</b>	<b>103</b>	<b>74</b>	<b>49</b>	<b>63</b>	<b>58</b>	<b>57</b>	<b>86</b>	<b>16</b>	

Home Education	Windsor Park	378	-	-	38	45	43	41	39	52	37	30	41	4	4	4	-
CBe-learn*		1,263	-	-	8	13	24	24	37	46	48	94	93	58	114	704	-
Chinook Learning Services*		912	-	-	-	-	-	-	-	-	-	-	-	-	-	912	-
<b>SUB-TOTAL</b>		<b>2,553</b>	-	-	<b>46</b>	<b>58</b>	<b>67</b>	<b>65</b>	<b>76</b>	<b>98</b>	<b>85</b>	<b>124</b>	<b>134</b>	<b>62</b>	<b>118</b>	<b>1,620</b>	-
*includes students 20 years old and older																	

<b>TOTAL ENROLMENT</b>	<b>142,403</b>	<b>33</b>	<b>8,310</b>	<b>10,425</b>	<b>10,524</b>	<b>11,122</b>	<b>11,060</b>	<b>10,175</b>	<b>10,812</b>	<b>10,210</b>	<b>10,466</b>	<b>10,375</b>	<b>11,052</b>	<b>11,293</b>	<b>13,885</b>	<b>2,661</b>	<b>5,271</b>
------------------------	----------------	-----------	--------------	---------------	---------------	---------------	---------------	---------------	---------------	---------------	---------------	---------------	---------------	---------------	---------------	--------------	--------------



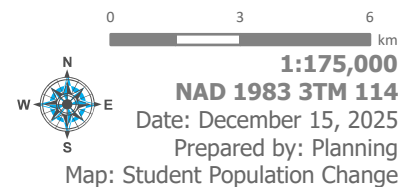




Calgary Board  
of Education

## Student Population Change (By Community)

September 27, 2024 to  
September 29, 2025



## Alternative Program Enrolment by School and by Grade

	Pre-K	K	1	2	3	4	5	6	7	8	9	10	11	12	Total
<b>Alice Jamieson Girls' Academy</b>						12	26	17	22	19	16				112
Stanley Jones School						12	26	17	22	19	16				112
<b>Arts-Centred Learning</b>							71	137	228	222	215				873
Sir John Franklin School							12	24	82	90	73				281
Willow Park School							59	113	146	132	142				592
<b>Chinese (Mandarin) Bilingual</b>		159	165	160	161	145	112	115	113	103	93				1326
Colonel Irvine School							99	88	93	84	72				436
Harold Panabaker School							13	27	20	19	21				100
Highwood School		75	76	67	75	73									366
Marion Carson School		52	52	52	54	44									254
Midnapore School		32	37	41	32	28									170
<b>French Immersion</b>		750	963	862	859	795	667	733	975	946	771	660	630	589	10200
Banff Trail School		59	77	77	73	62	61								409
Bishop Pinkham School									188	154	114				456
Bob Edwards School									62	66	56				184
Branton School								117	210	225	177				729
Chinook Park School		47	54	44	47	37	39	30							298
David Thompson School							78	78	138	126	121				541
Dr. E. P. Scarlett High School												138	130	126	394
Elboya School							45	59	88	73	64				329
F. E. Osborne School								82	50	43	37				212
Georges P. Vanier School								86	105	115	106				412
Hidden Valley School		37	55	50	54	54									250
Janet Johnstone School		45	59	39	47	27									217
King George School		89	121	127	121	105	86								649
Mayland Heights School		36	74	44	45	28	30	31							288
Sam Livingston School		76	81	72	92	79									400
Sundance School		88	100	95	85	81	56	64							569
Tuscany School		56	70	63	54	56	43								342
Valley Creek School							57	57	41	54	38				247
Varsity Acres School		68	103	92	104	122	70								559
Western Canada High School												216	224	236	676
Westgate School		80	92	104	81	81	73	96							607
William Aberhart High School												306	276	227	809
William Reid School		69	77	55	56	63									320
Woodman School							29	33	93	90	58				303
<b>German Bilingual</b>		24	26	19	31	22	14	19							155
Bowcroft School		24	26	19	31	22	14	19							155
<b>Indigenous Focus</b>	33	61	97	68	41	37	28	27							392
Niitsitapi Learning Centre	33	47	58	41											179
Piitoayis Family School		14	39	27	41	37	28	27							213

## Alternative Program Enrolment by School and by Grade

	Pre-K	K	1	2	3	4	5	6	7	8	9	10	11	12	Total
<b>Montessori</b>	<b>192</b>	<b>182</b>	<b>174</b>	<b>171</b>	<b>142</b>	<b>98</b>	<b>102</b>								<b>1061</b>
Captain John Palliser School	59	47	49	47	55	29	26								312
Killarney School	61	66	58	51	42	31	38								347
Lake Bonavista School	72	69	67	73	45	38	38								402
<b>Science School</b>	<b>249</b>	<b>240</b>	<b>239</b>	<b>271</b>	<b>266</b>	<b>285</b>	<b>317</b>	<b>425</b>	<b>378</b>	<b>364</b>					<b>3034</b>
Ian Bazalgette School									57	56	45				158
Louis Riel School	66	66	66	76	81	56	85	96	92	90					774
Maple Ridge School	88	75	73	95	79										410
R. T. Alderman School						120	124	174	136	146					700
Riverside School	50	50	50	50	56	59	59	98	94	83					649
Valley View School	45	49	50	50	50	50	49								343
<b>Spanish Bilingual</b>	<b>395</b>	<b>468</b>	<b>425</b>	<b>438</b>	<b>388</b>	<b>361</b>	<b>316</b>	<b>243</b>	<b>244</b>	<b>188</b>	<b>89</b>	<b>90</b>	<b>79</b>		<b>3724</b>
A. E. Cross School									25	20	13				58
Canyon Meadows School	75	87	70	77	62	60									431
Collingwood School	65	84	85	86	83	74	71								548
Crescent Heights High School												89	90	79	258
Dalhousie School	71	79	77	73	69	78	71								518
Eugene Coste School	61	88	65	76	62	60									412
Glenmeadows School	66	62	71	68	60	36	29								392
Robert Warren School							103	79	74	59					315
Senator Patrick Burns School								139	150	116					405
W. O. Mitchell School	57	68	57	58	52	53	42								387
<b>Traditional Learning Centre</b>	<b>643</b>	<b>701</b>	<b>719</b>	<b>751</b>	<b>766</b>	<b>754</b>	<b>757</b>	<b>697</b>	<b>691</b>	<b>660</b>					<b>7139</b>
Annie Gale School								59	61	57	63				240
Balmoral School						103	120	113	116	102					554
Brentwood School	96	124	126	124	121	107	111								809
Chief Justice Milvain School	51	50	50	75	75	74									375
Chris Akkerman School	102	101	102	105	120	125									655
Colonel Macleod School						97	98	97	92	79					463
Colonel Sanders School		96	101	105	104										406
Dr. J. K. Mulloy School	100	103	107	105	104										519
Fairview School					161	165	162	155	153	151					947
Glamorgan School	82	78	76	81	81	83	84	66	63	64					758
Le Roi Daniels School	146	149	157	156											608
Sir Wilfrid Laurier School							123	123	118	111					475
Thomas B. Riley School								82	92	90					264
Thornccliffe School		66													66
<b>Grand Total</b>	<b>33</b>	<b>2473</b>	<b>2842</b>	<b>2666</b>	<b>2723</b>	<b>2573</b>	<b>2416</b>	<b>2540</b>	<b>2703</b>	<b>2603</b>	<b>2307</b>	<b>749</b>	<b>720</b>	<b>668</b>	<b>28016</b>

**CALGARY BOARD OF EDUCATION  
SPECIALIZED CLASSES 2025-2026**

Area	School	Program	# of Classes
1	Arbour Lake (6-9)	Learning & Literacy	2
1	Arbour Lake (6-9)	The Class	1
1	Belvedere Parkway (K-6)	Bridges	1
1	Bowness (10-12)	Paced Learning Program (PLP)	1
1	Captain John Palliser (K-6)	Learning & Literacy	1
1	Discovering Choices	Nexus	3
1	F.E. Osborne (6-9)	CASA	1
1	H.D. Cartwright (7-9)	Attitude, Community Competence, Elements (of Academic Curriculum), Social Skills (ACCESS)	1
1	H.D. Cartwright (7-9)	Learning & Literacy	1
1	Ranchlands (K-6)	Bridges	1
1	Ranchlands (K-6)	Paced Learning Program (PLP)	1
1	Robert Thirsk High (10-12)	Adapted Learning Program (ALP)	1
1	Robert Thirsk High (10-12)	Communication, Sensory and Social Interaction (CSSI)	1
1	Robert Thirsk High (10-12)	Paced Learning Program (PLP)	1
1	Robert Thirsk High (10-12)	Teaching of Attitude, Social Skills and Communication (TASC)	1
1	Sir Winston Churchill High (10-12)	Teaching of Attitude, Social Skills and Communication (TASC)	1
1	Sir Winston Churchill High (10-12)	The Class	1
1	Terrace Road (K-6)	Adapted Learning Program (ALP)	1
1	Thomas B. Riley (7-9)	Adapted Learning Program (ALP)	1
1	Thomas B. Riley (7-9)	Paced Learning Program (PLP)	1
1	Tuscany (K-5)	Enhanced Educational Supports (EES)	2
1	West Dalhousie (K-6)	Enhanced Educational Supports (EES)	2
1	William D. Pratt (5-9)	Communication, Sensory and Social Interaction (CSSI)	1
2	Beddington Heights (K-6)	The Class	1
2	Branton (6-9)	Attitude, Community Competence, Elements (of Academic Curriculum), Social Skills (ACCESS)	1
2	Branton (6-9)	Communication, Sensory and Social Interaction (CSSI)	1
2	Buchanan (K-6)	Enhanced Educational Supports (EES)	2
2	Cambrian Heights (K-6)	Bridges	1
2	Children's Village	Enhanced Educational Supports II	3
2	Colonel Irvine (5-9)	Bridges	1
2	Georges P. Vanier (6-9)	Learning & Literacy	2
2	Huntington Hills (K-6)	Learning & Literacy	1
2	James Fowler High (10-12)	Communication, Sensory and Social Interaction (CSSI)	1
2	James Fowler High (10-12)	Literacy, English & Academic Development (LEAD)	3
2	James Fowler High (10-12)	Paced Learning Program (PLP)	2
2	James Fowler High (10-12)	The Class	1
2	Kenneth D. Taylor (K-4)	Enhanced Educational Supports (EES)	2
2	North Haven (K-6)	Paced Learning Program (PLP)	2
2	Panorama Hills (K-5)	Enhanced Educational Supports (EES)	3
2	Senator Patrick Burns (7-9)	Paced Learning Program (PLP)	1
2	Sir John A. Macdonald (7-9)	Adapted Learning Program (ALP)	1
2	Sir John A. Macdonald (7-9)	Paced Learning Program (PLP)	1
2	Sir John Franklin (5-9)	Communication, Sensory and Social Interaction (CSSI)	2
2	Sir John Franklin (5-9)	Literacy, English & Academic Development (LEAD)	5
2	Sir John Franklin (5-9)	Teaching of Attitude, Social Skills and Communication (TASC)	1
2	William Aberhart High (10-12)	Adapted Learning Program (ALP)	2
2	William Aberhart High (10-12)	Attitude, Community Competence, Elements (of Academic Curriculum), Social Skills (ACCESS)	1
3	Abbeydale (K-6)	Enhanced Educational Supports (EES)	1
3	Belfast (K-6)	Literacy, English & Academic Development (LEAD) Div. II	2
3	Cappy Smart (K-6)	Enhanced Educational Supports (EES)	3
3	Colonel Macleod (5-9)	Bridges	1
3	Colonel Macleod (5-9)	Literacy, English & Academic Development (LEAD) Div III	2
3	Crescent Heights High (10-12)	Bridges	1
3	Crescent Heights High (10-12)	Literacy, English & Academic Development (LEAD)	2
3	Crescent Heights High (10-12)	Paced Learning Program (PLP)	1
3	Crescent Heights High (10-12)	The Class	2
3	Dr. Gladys M. Egbert (7-9)	Paced Learning Program (PLP)	2
3	Erin Woods (K-6)	Adapted Learning Program (ALP)	1
3	Erin Woods (K-6)	Bridges	1
3	Erin Woods (K-6)	Enhanced Educational Supports (EES)	1
3	Ernest Morrow (7-9)	Bridges	1
3	Ernest Morrow (7-9)	Literacy, English & Academic Development (LEAD)	3
3	Ernest Morrow (7-9)	Paced Learning Program (PLP)	2
3	Forest Lawn High (10-12)	Attitude, Community Competence, Elements (of Academic Curriculum), Social Skills (ACCESS)	1
3	Forest Lawn High (10-12)	Literacy, English & Academic Development (LEAD)	5
3	Forest Lawn High (10-12)	Paced Learning Program (PLP)	2
3	Forest Lawn High (10-12)	The Class	1

**CALGARY BOARD OF EDUCATION  
SPECIALIZED CLASSES 2025-2026**

Area	School	Program	# of Classes
3	G.W. Skene (4-6)	Communication, Sensory and Social Interaction (CSSI)	1
3	Jack James High (10-12)	Paced Learning Program (PLP)	2
3	Mount View (K-6)	Literacy, English & Academic Development (LEAD) Div. II	2
3	Niitsitapi Learning Centre (K-2)	Indigenous Forward Preschool	4
3	North Trail High (10-12)	Communication, Sensory and Social Interaction (CSSI)	2
3	North Trail High (10-12)	Literacy, English & Academic Development (LEAD) Div IV	2
3	Nose Creek (6-9)	Communication, Sensory and Social Interaction (CSSI)	1
3	Nose Creek (6-9)	Paced Learning Program (PLP)	2
3	Penbrooke Meadows (K-6)	Literacy, English & Academic Development (LEAD)	2
3	Riverside (K-9)	Attitude, Community Competence, Elements (of Academic Curriculum), Social Skills (ACCESS)	1
3	Roland Michener (K-6)	Bridges	1
3	Roland Michener (K-6)	Paced Learning Program (PLP)	1
3	Rosemont (K-6)	Bridges	1
3	Valley Creek (5-9)	Communication, Sensory and Social Interaction (CSSI)	1
3	Valley Creek (5-9)	Teaching of Attitude, Social Skills and Communication (TASC)	1
3	Valley Creek (5-9)	The Class	1
3	Vista Heights (K-6)	Learning & Literacy	2
3	West Dover (K-6)	Enhanced Educational Supports (EES)	2
4	Annie Gale (6-9)	Learning & Literacy	2
4	Bob Edwards (6-9)	The Class	1
4	Cecil Swanson (K-6)	Bridges	1
4	Cecil Swanson (K-6)	Enhanced Educational Supports (EES)	1
4	Clarence Sansom (7-9)	Adapted Learning Program (ALP)	1
4	Clarence Sansom (7-9)	Attitude, Community Competence, Elements (of Academic Curriculum), Social Skills (ACCESS)	2
4	Crossing Park (K-9)	Attitude, Community Competence, Elements (of Academic Curriculum), Social Skills (ACCESS)	1
4	Dr. Gordon Higgins (7-9)	Paced Learning Program (PLP)	2
4	Falconridge (K-6)	Enhanced Educational Supports (EES)	2
4	Hugh A. Bennett (K-4)	Enhanced Educational Supports (EES)	2
4	Lester B. Pearson High (10-12)	Adapted Learning Program (ALP)	2
4	Lester B. Pearson High (10-12)	Attitude, Community Competence, Elements (of Academic Curriculum), Social Skills (ACCESS)	1
4	Monterey Park (K-6)	Enhanced Educational Supports (EES)	3
4	Nelson Mandela High (10-12)	Communication, Sensory and Social Interaction (CSSI)	1
4	Nelson Mandela High (10-12)	Literacy, English & Academic Development (LEAD) Div IV	2
4	Nelson Mandela High (10-12)	Paced Learning Program (PLP)	2
4	O.S. Geiger (K-6)	Enhanced Educational Supports (EES)	2
4	O.S. Geiger (K-6)	Paced Learning Program (PLP)	1
4	Peter Loughheed (5-9)	Learning & Literacy	1
4	Peter Loughheed (5-9)	Literacy, English & Academic Development (LEAD)	2
4	Pineridge (K-6)	Enhanced Educational Supports (EES)	4
4	Sir Wilfred Laurier (6-9)	Communication, Sensory and Social Interaction (CSSI)	1
4	Ted Harrison (5-9)	Communication, Sensory and Social Interaction (CSSI)	1
4	Ted Harrison (5-9)	Paced Learning Program (PLP)	1
4	Terry Fox (7-9)	Bridges	1
4	Terry Fox (7-9)	Literacy, English & Academic Development (LEAD)	3
4	Terry Fox (7-9)	The Class	1
5	Auburn Bay (K-5)	Enhanced Educational Supports (EES)	2
5	Centennial High (10-12)	Attitude, Community Competence, Elements (of Academic Curriculum), Social Skills (ACCESS)	1
5	Centennial High (10-12)	Communication, Sensory and Social Interaction (CSSI)	1
5	Centennial High (10-12)	Paced Learning Program (PLP)	1
5	Centennial High (10-12)	The Class	1
5	Deer Run (K-6)	Bridges	1
5	Haultain Memorial (K-6)	Bridges	1
5	Joane Cardinal-Schubert High (10-12)	The Class	1
5	Lord Beaverbrook High (10-12)	Adapted Learning Program (ALP)	2
5	Lord Beaverbrook High (10-12)	Communication, Sensory and Social Interaction (CSSI)	1
5	Lord Beaverbrook High (10-12)	Paced Learning Program (PLP)	2
5	Lord Beaverbrook High (10-12)	The Class	1
5	McKenzie Highland (4-9)	Learning & Literacy	4
5	McKenzie Lake (K-5)	Enhanced Educational Supports (EES)	2
5	McKenzie Towne (K-4)	Enhanced Educational Supports (EES)	3
5	Midnapore (K-6)	Adapted Learning Program (ALP)	1
5	Midsun (7-9)	Adapted Learning Program (ALP)	1
5	Midsun (7-9)	Attitude, Community Competence, Elements (of Academic Curriculum), Social Skills (ACCESS)	1
5	Midsun (7-9)	Teaching of Attitude, Social Skills and Communication (TASC)	1
5	Mountain Park (6-9)	Communication, Sensory and Social Interaction (CSSI)	1
5	Mountain Park (6-9)	Teaching of Attitude, Social Skills and Communication (TASC)	1
5	Mountain Park (6-9)	The Class	1

**CALGARY BOARD OF EDUCATION  
SPECIALIZED CLASSES 2025-2026**

Area	School	Program	# of Classes
5	Samuel W. Shaw (5-9)	Paced Learning Program (PLP)	2
5	Wilma Hansen (5-9)	Bridges	1
5	Wilma Hansen (5-9)	Paced Learning Program (PLP)	1
5	Wilma Hansen (5-9)	RISE	1
6	A.E. Cross (7-9)	Paced Learning Program (PLP)	2
6	Alternative High (10-12)	The Class	2
6	Cedarbrae (K-6)	Bridges	1
6	Central Memorial High (10-12)	Bridges	1
6	Central Memorial High (10-12)	Communication, Sensory and Social Interaction (CSSI)	1
6	Central Memorial High (10-12)	Teaching of Attitude, Social Skills and Communication (TASC)	1
6	Dr. E.P. Scarlett High (10-12)	Teaching of Attitude, Social Skills and Communication (TASC)	1
6	Ethel M. Johnson (K-6)	Enhanced Educational Supports (EES)	2
6	Ethel M. Johnson (K-6)	Learning & Literacy	1
6	Ethel M. Johnson (K-6)	Paced Learning Program (PLP)	1
6	Evergreen (K-5)	Enhanced Educational Supports (EES)	2
6	Harold Panabaker (5-9)	Adapted Learning Program (ALP)	1
6	Harold Panabaker (5-9)	Learning & Literacy	1
6	Henry Wise Wood High (10-12)	Attitude, Community Competence, Elements (of Academic Curriculum), Social Skills (ACCESS)	1
6	Henry Wise Wood High (10-12)	Gifted and Talented Education (GATE)	3
6	Henry Wise Wood High (10-12)	Literacy, English & Academic Development (LEAD)	1
6	Henry Wise Wood High (10-12)	Paced Learning Program (PLP)	1
6	John Ware (7-9)	The Class	1
6	Louis Riel (K-9)	Gifted and Talented Education (GATE II/III)	7
6	Marshall Springs (6-9)	Communication, Sensory and Social Interaction (CSSI)	1
6	Nickle (6-9)	Bridges	1
6	Nickle (6-9)	Learning & Literacy	2
6	Ron Southern (K-6)	Enhanced Educational Supports (EES)	2
6	Woodbine (K-6)	Communication, Sensory and Social Interaction (CSSI)	1
6	Woodlands (K-6)	Enhanced Educational Supports (EES)	1
7	Battalion Park (K-6)	Enhanced Educational Supports (EES)	2
7	Bishop Pinkham (7-9)	Communication, Sensory and Social Interaction (CSSI)	1
7	Colonel Walker (K-6)	Bridges	1
7	Earl Grey (K-6)	Learning & Literacy	1
7	Ernest Manning High (10-12)	Paced Learning Program (PLP)	1
7	Hillhurst (K-6)	Gifted and Talented Education (GATE)	5
7	Jennie Elliott (K-6)	Deaf and Hard of Hearing	4
7	Mount Royal (7-9)	Teaching of Attitude, Social Skills and Communication (TASC)	1
7	Queen Elizabeth High (7-12)	Deaf and Hard of Hearing (III/IV)	5
7	Queen Elizabeth High (7-12)	Gifted and Talented Education (GATE III/IV)	8
7	Queen Elizabeth High (7-12)	RISE	1
7	Queen Elizabeth High (7-12)	The Class	2
7	Simons Valley (K-6)	Enhanced Educational Supports (EES)	1
7	University (K-6)	Enhanced Educational Supports (EES)	1
7	Vincent Massey (7-9)	Bridges	1
7	Vincent Massey (7-9)	Learning & Literacy	1
7	Vincent Massey (7-9)	Literacy, English & Academic Development (LEAD)	1
7	Wildwood (K-6)	Enhanced Educational Supports (EES)	2
7	Wildwood (K-6)	Paced Learning Program (PLP)	1

**TOTAL CLASSES      292**

## Enrolment in Specialized Classes by School and by Grade

	K	1	2	3	4	5	6	7	8	9	10	11	12	Total
<b>ACCESS</b>								<b>31</b>	<b>26</b>	<b>19</b>	<b>27</b>	<b>12</b>	<b>22</b>	<b>137</b>
Branton School								3	7	1				11
Centennial High School											3	3	3	9
Clarence Sansom School								11	6	7				24
Crossing Park School								6	4	1				11
Forest Lawn High School											10	1		11
H. D. Cartwright School								5	1	5				11
Henry Wise Wood High School											3	2	5	10
Lester B. Pearson High School											4	5	5	14
MidSun School								6	4	3				13
Riverside School									4	2				6
William Aberhart High School											7	1	9	17
<b>ALP (Adapted Learning Program)</b>					<b>14</b>	<b>12</b>	<b>10</b>	<b>18</b>	<b>26</b>	<b>19</b>	<b>27</b>	<b>25</b>	<b>28</b>	<b>179</b>
Clarence Sansom School								7	5	1				13
Erin Woods School					5	7								12
Harold Panabaker School								2	3	5				10
Lester B. Pearson High School											11	5	10	26
Lord Beaverbrook High School											3	10	7	20
Midnapore School					6	2	4							12
MidSun School								3	8	3				14
Robert Thirsk High School											5	4	6	15
Sir John A. Macdonald School								2	5	7				14
Terrace Road School					3	3	6							12
Thomas B. Riley School								4	5	3				12
William Aberhart High School											8	6	5	19
<b>Bridges</b>		<b>6</b>	<b>14</b>	<b>18</b>	<b>31</b>	<b>22</b>		<b>19</b>	<b>17</b>	<b>16</b>	<b>10</b>	<b>11</b>	<b>4</b>	<b>168</b>
Belvedere Parkway School					4	5	1							10
Cambrian Heights School				1	2	3	4							10
Cecil Swanson School				1	3	1	1							6
Cedarbrae School				2	2	2	1							7
Central Memorial High School											5	5	2	12
Colonel Irvine School								3	3	4				10
Colonel Macleod School								1	5	2				8
Colonel Walker School			1	1	1	2								5
Crescent Heights High School											5	6	2	13
Deer Run School				5		3	1							9
Erin Woods School			2		2	3	3							10
Ernest Morrow School								3	5	2				10
Haultain Memorial School				1		3	2							6
Nickle School								5	1	1				7
Ranchlands School			1	1		4	2							8
Roland Michener School				1	3	4	2							10
Rosemont School			2	1	1	1	5							10
Terry Fox School								2	1	2				5
Vincent Massey School								3	2	1				6
Wilma Hansen School								2		4				6



### Enrolment in Specialized Classes by School and by Grade

	K	1	2	3	4	5	6	7	8	9	10	11	12	Total
CSSI					2	3	4	13	13	29	11	18	14	107
Bishop Pinkham School								2	2	2				6
Branton School								1	3	2				6
Centennial High School											2		3	5
Central Memorial High School												1	2	3
G. W. Skene School					1	1	3							5
James Fowler High School											1		3	5
Lord Beaverbrook High School												5	1	6
Marshall Springs School								2	1	3				6
Mountain Park School								1	1	3				5
Nelson Mandela High School											1	4	1	6
North Trail High School											5	4	3	12
Nose Creek School										6				6
Robert Thirsk High School											2	3	1	6
Sir John Franklin School								2	2	4				8
Sir Wilfrid Laurier School										4				4
Ted Harrison School								2	2	2				6
Valley Creek School								3		2				5
William D. Pratt School									2	1				3
Woodbine School					1	2	1							4
DHH (Deaf and Hard of Hearing)	6	9	4	6	5	10	9	6	8	8	8	8	8	87
Jennie Elliott School	6	9	4	6	5	10								40
Queen Elizabeth High School							9	6	8	8	8	8	8	47
EES (Enhanced Educational Supports)	67	88	110	78	62	52								457
Abbeydale School			7				1							8
Auburn Bay School	1	5	2	7			2							17
Battalion Park School		4	7	4			3							18
Buchanan School	3	1	7	2	2	2								17
Cappy Smart School	3	6	3	4	1	2								19
Cecil Swanson School		3	2	1	1									7
Children's Village School			2	3	6	5								16
Erin Woods School	3	4	2											9
Ethel M. Johnson School	3	2	2	4	5	2								18
Evergreen School	1	4	6	2	3	1								17
Falconridge School	2	6	4	4			1							17
Hugh A. Bennett School		5	4	2	5	1								17
Kenneth D. Taylor School	1	3	5	3	4	2								18
McKenzie Lake School	4	2	3	5	3	1								18
McKenzie Towne School	8	4	4	3	3	3								25
Monterey Park School	4	3	8	7	3	2								27
O. S. Geiger School	2	3	4	1	4	3								17
Panorama Hills School	5	3	6	5	2	5								26
Pineridge School	2	6	5	7	9	2								31
Ron Southern School	4	4	5	3	2									18
Simons Valley School	4	1	2		1	1								9
Tuscany School	3		4	3	3	5								18
University School	3	2	2		1	1								9
West Dalhousie School	2	5	3	3	1	4								18
West Dover School		6	5			3	2							16
Wildwood School	6	5	4	2			1							18
Woodlands School	3	1	2	3										

### Enrolment in Specialized Classes by School and by Grade

[illegible]

## Enrolment in Specialized Classes by School and by Grade

	K	1	2	3	4	5	6	7	8	9	10	11	12	Total
<b>PLP</b>					12	25	53	71	94	85	85	86	76	587
A. E. Cross School								6	7	16				29
Bowness High School											7	5	4	16
Centennial High School											3	7	8	18
Crescent Heights High School											6	4	5	15
Dr. Gladys McKelvie Egbert School								7	15	7				29
Dr. Gordon Higgins School								7	12	10				29
Ernest Manning High School											5	3	6	14
Ernest Morrow School								8	8	15				31
Ethel M. Johnson School					5	1	8							14
Forest Lawn High School											8	12	8	28
Henry Wise Wood High School											3	9	1	13
Jack James High School											19	11	4	34
James Fowler High School											14	11	10	35
Lord Beaverbrook High School											2	11	10	23
Nelson Mandela High School											13	8	12	33
North Haven School					3	8	15							26
Nose Creek School							4	10	10	6				30
O. S. Geiger School					1	4	4							9
Ranchlands School					1	4	6							11
Robert Thirsk High School											5	5	8	18
Roland Michener School					1	3	8							12
Samuel W. Shaw School							2	12	9	9				32
Senator Patrick Burns School								5	5	4				14
Sir John A. Macdonald School								5	9	2				16
Ted Harrison School								6	7	3				16
Thomas B. Riley School								3	6	5				14
Wildwood School					1	5	6							12
Wilma Hansen School								2	6	8				16
<b>RISE</b>								2	4	6				12
Queen Elizabeth High School								1	3	5				9
Wilma Hansen School								1	1	1				3
<b>TASC</b>								11	12	5	9	7	4	48
Central Memorial High School											1	4	1	6
Dr. E. P. Scarlett High School											5			5
MidSun School								3	1	2				6
Mount Royal School								2	3	1				6
Mountain Park School								2	4					6
Robert Thirsk High School											2	1	1	4
Sir John Franklin School								1	4					5
Sir Winston Churchill High School											1	2	2	5
Valley Creek School								3		2				5

## Enrolment in Specialized Classes by School and by Grade

	K	1	2	3	4	5	6	7	8	9	10	11	12	Total
The Class					1	2	6	12	19	31	52	46	59	228
Alternative High School											8	10	10	28
Arbour Lake School								4	4	3				11
Beddington Heights School					1	2	6							9
Bob Edwards School								1	2	1				4
Centennial High School											4	1	8	13
Crescent Heights High School											8	7	13	28
Forest Lawn High School											3	3	9	15
James Fowler High School											4	5	7	16
Joane Cardinal-Schubert High School											6	3	1	10
John Ware School									4	8				12
Lord Beaverbrook High School											4	5	6	15
Mountain Park School								1		4				5
Queen Elizabeth High School									3	8	7	9		27
Sir Winston Churchill High School											8	3	5	16
Terry Fox School								4	1	6				11
Valley Creek School								2	5	1				8
<b>Grand Total</b>		73	103	128	179	243	335	371	388	375	305	307	305	3112

## | appendix | Specialized Classes Definitions

### Specialized Classes

#### **ACCESS** - *Attitude, Community Competence, Elements of Academic Curriculum, Social Skills*

The Attitude, Community Competence, Elements of Academic Curriculum, Social Skills (ACCESS) class provides educational programming for students in grades 7-12 with moderate to severe cognitive disabilities and low to extremely low adaptive skills. The curriculum is modified to support the personalization of learning according to the unique strengths and needs of each student. Students receive modified programming that focuses on building foundational skills in functional academics, communication, social interaction, leisure skills, vocational skills and skills for self-regulation. The instructional team includes a teacher, education assistant(s) and a lunchroom supervisor. Additional supports from multi-disciplinary team members may include consultation and collaboration with behaviour support workers, specialists, strategists, occupational therapists, speech language pathologists, physiotherapists and psychologists.

#### **ALP** - *Adapted Learning Program*

The Adapted Learning Program (ALP) provides educational programming for students in grades 4-12 with moderate cognitive disabilities and low to extremely low adaptive skills. ALP programming focuses on building foundational skills in functional academics, communication, social interaction, leisure skills, vocational skills and skills for self-regulation. The curriculum is modified to support the personalization of learning according to the unique strengths and needs of each student. The instructional team includes a teacher and education assistant(s). Additional supports from multi-disciplinary team members may include consultation and collaboration with behaviour support workers, specialists, strategists, occupational therapists, speech-language pathologists, physiotherapists and psychologists.

#### **CSSI** - *Communication, Sensory, Social Interaction*

The Communication, Sensory, Social Interaction (CSSI) class provides educational programming for students with multiple and complex learning, behaviour, and communication needs in grades 4-12. Students receive modified programming that focuses on building foundational skills in functional academics, communication, social interaction, leisure skills, vocational skills, and skills for self-regulation. The curriculum is modified to support the personalization of learning according to the unique strengths and needs of each student. The instructional team includes a teacher, education assistants and a lunchroom supervisor. Additional supports from multi-disciplinary team members may include consultation and collaboration with behaviour support workers, specialists, strategists, occupational therapists, speech-language pathologists, physiotherapists and psychologists.

### **EES - Enhanced Educational Supports**

The Enhanced Educational Supports (EES) class provides educational programming for students in grades 1-6 with moderate to severe developmental disabilities. The EES class focuses on building foundational skills in functional academics, communication, social interaction, leisure skills, functional living skills, and skills for self-regulation. The curriculum is modified to support the personalization of learning according to the unique strengths and needs of each student. The classroom team includes a teacher, education assistants and a lunchroom supervisor. Additional supports from multi-disciplinary team members may include consultation and collaboration with behaviour support workers, specialists, strategists, occupational therapists, speech-language pathologists, physiotherapists, and psychologists.

### **PLP - Paced Learning Program**

The Paced Learning Program (PLP) provides educational programming for students in grades 4 to 12 who have been diagnosed as having a mild intellectual disability and below average to low average adaptive functioning (e.g., social, communication, practical daily living). In PLP, students access the Alberta Program of Studies with adaptations to learning outcomes as appropriate to each individual. Additional areas of focus for learning include communication, social interaction, leisure skills, self-regulation skills, functional living skills, and vocational skills. Programming is personalized to support the unique strengths and needs of each student. The classroom team includes a teacher and an educational assistant, and additional supports may be provided in consultation with a multidisciplinary team.

### **TASC - Teaching Attitude, Social and Communication Skills**

The Teaching of Attitude, Social and Communication Skills (TASC) class provides educational programming for students in grades 7-12 who have been diagnosed with moderate to severe developmental disabilities. Students receive modified programming that focuses on building foundational skills in functional academics, communication, social interaction, leisure skills, and skills, vocational skills for self-regulation. The curriculum is modified to support the personalization of learning according to the unique strengths and needs of each student. The classroom team consists of a teacher, educational assistants and a lunchroom supervisor. Additional supports from multi-disciplinary team members includes consultation and collaboration with behaviour support workers, specialists, strategists, occupational therapists, speech-language pathologists, physiotherapists and psychologists.

### **Deaf and Hard of Hearing (DHH)**

The Deaf and Hard of Hearing (DHH) class provides educational programming for students in grades 1-12 whose hearing loss significantly impacts their language development and learning. DHH classes offer unique educational environments, including direct English language instruction, communicative supports, and services. Curriculum adaptations, instructional accommodations, integration opportunities, and learning technologies are personalized based on each student's strengths and needs. Programming options for DHH students include communication and instruction through Aural/Oral and/or bilingual approaches.

#### **Aural/Oral Approach**

This approach emphasizes the use of hearing technology, residual hearing, speech, speech-reading, written English, and visual supports. The primary goal is to develop skills in listening and spoken language, reading and writing, and self-advocacy. Aural/Oral programming is recommended for families who prefer their children to learn through aural methods of input (listening to English) and oral expression (speaking).

## Bi-lingual - ASL/English Approach

This approach emphasizes the use of American Sign Language (ASL) for language learning. The primary goal is to optimize students' communication abilities in ASL alongside English literacy and numeracy skills. Students may utilize personal technology and FM/DM systems. ASL/English programming is recommended for families who prefer their children to learn through direct instruction in American Sign Language, or for students who require sign language to communicate.

## Literacy, English and Academic Development (LEAD)

Students identified as EAL (English as an Additional Language) learners, who have limited formal school experiences may access a specialized program called Literacy, English and Academic Development (LEAD). The offer of placement for LEAD is made through the Welcome Centre, at the time of initial registration; placement offers are made throughout the year.

LEAD students are supported by intensive programming focused on literacy, numeracy, and English language development (ELD). Students may have limited skills in home language literacy and numeracy, and most have not started to acquire English language skills. Interventions (academic and social/emotional) are provided for students who may be at risk of disengaging from school. The goal of the program is to make significant educational gains over a 20-month period so students can successfully transition into mainstream classrooms.

A LEAD Program is not a remedial program for EAL learners. LEAD is not offered to students with formal school experience or who have already acquired age/grade appropriate home language literacy and academic knowledge.

### Learner Profile:

- Refugee or newcomer status
- age appropriate for grades 4-12
- limited, interrupted, or no school experience
- limited literacy and numeracy skills in home language
- limited literacy and numeracy skills in English
- may have complex social and emotional needs

## Gifted and Talented (GATE)

Alberta Education describes giftedness as exceptional performance and/or potential in learning rate, depth of knowledge, reasoning and problem-solving abilities when compared with others of the same age, experience and environment. Giftedness presents across a wide range of abilities: general intellectual, specific academic, creative thinking, social, musical, artistic, kinesthetic. (Alberta Education, 2004). Educational programming in the GATE class centers on the application of higher level thinking skills while offering opportunities to explore areas of particular interest, strength or need for students in grades 4-12.

## Learning & Literacy (L&L)

The Learning and Literacy (L&L) class provides educational programming for students in grades 4 to 9 who have been identified with Learning Disabilities impacting reading acquisition. Students diagnosed with a Specific Learning Disorder with impairment in reading can also be referred when there are indications that they are able to leverage supports through spoken language.



The goal of L&L is to assist each student gaining skills, knowledge, and competencies in reaching their academic, social, and emotional potential. The emphasis for instruction is on developing literacy skills (reading and writing) within an inclusive classroom environment. Inclusive learning technologies, curriculum design, accommodations, and all key components of programming for students with learning disabilities are implemented based on each student's individual needs.

## Mental Health and Wellness

### Bridges

The Bridges class provides educational programming for students in grades 1-12 who present with complex and severe mental health challenges and overt, dysregulated behaviours significantly impacting their academic engagement and well-being. Educational programming focuses on building both social-emotional and academic competencies through the utilization of a continuum of support and services. Social-Emotional Learning instruction is aligned with CASEL's competencies as identified within the CBE's Well-Being Framework.

The classroom team includes a teacher and a Bridges Support Worker. Students receive additional support through consultation and collaboration with a multi-disciplinary team, including system specialists, area strategists, school-family liaisons, and psychologists. As individual students develop and practice their social-emotional skills and demonstrate readiness, support is provided to transition them toward partial or complete integration into their community school.

### The Class

The Class provides educational programming for students in grades 4-12 who present with complex and severe mental health challenges and internalized, dysregulated behaviours significantly impacting their academic engagement and well-being. Social-emotional instruction in The Class emphasizes self-awareness, self-regulation, peer and social relationship skills, and strategies for engaging in academic learning. Social-Emotional Learning instruction is aligned with CASEL's competencies as identified within the CBE's Well-Being Framework.

The classroom team includes a teacher and a Behaviour Support Worker. Students receive additional support through consultation and collaboration with a multi-disciplinary team, including system specialists, area strategists, school-family liaisons, and psychologists. As individual students develop and practice their social-emotional skills and demonstrate readiness, support is provided to transition them toward partial or complete integration into their community school.

### *RISE - Reaching Independence through Support and Education*

Reaching Independence through Support and Education (RISE) provides educational programming for students in grades 7-9 who have significant complex internalizing mental health disorders which severely impair functioning. The goal of the program is to build on strengths as well as identify and address barriers to mental well-being, school engagement and academic success. Academic programming is personalized based on individual student needs and readiness. Program staff includes one teacher and Behaviour Support Worker, Recovery Alberta for therapeutic support and consultation, and a School Family Liaison who is available to support student families in their homes.

## Nexus

Nexus provides educational programming for students in grades 10–12 experiencing complex emotional, social and/or behavioral challenges. These challenges have had a significant impact on the student's learning and well-being. Nexus staff use a strength based approach to create an emotionally, physically, and psychologically safe classroom. Building on positive relationships established through personalized curriculum design, staff support students to work towards enhancing their social, emotional, and academic growth. This process may include assessment of current needs, life skills development, work experience support, and collaborating with community supports.

Educational programming and instructional accommodations are personalized, based on the individual needs of each student. The Nexus program works with the student and their natural and professional supports to identify strengths to increase personal capacity and resiliency. Classes are typically staffed with three support people including at least one CBE teacher and one behaviour support worker. A CBE psychologist is an integral part of the Nexus team providing consultation regarding appropriate programming, day to day strategies and individual counselling when students are ready.

# School Capacity and Utilization 2025 - 2026

Attachment IX

- i. The provincial utilization rate of each school building includes lease exemptions as of September 1 of the current year
- ii.  $\text{Weighted Enrolment} = (\text{Kindergarten minus Kindergarten Special Education Severe}) \div 2 + (\text{Kindergarten Special Education Severe multiplied by } 1.5) + (\text{GR } 1\text{-}12 \text{ enrolment minus GR } 1\text{-}12 \text{ Special Education Severe}) + (\text{GR } 1\text{-}12 \text{ Special Education Severe multiplied by } 3)$
- iii.  $\text{Utilization Rate} = \text{Weighted Enrolment} \div \text{Provincial Capacity}$
- iv. \*Capacity values are given as calculated under the Instructional Area Method, currently prescribed by the Province of Alberta

SCHOOL	2024 WEIGHTED ENROLMENT	2024 PROVINCIAL % UTILIZ.	2025 WEIGHTED ENROLMENT	2025* PROVINCIAL CAPACITY	# Of Modulars/ Portables	2025 PROVINCIAL % UTILIZ.	Provincial Utilization Difference (2024 to 2025)
<b>AREA 1</b>							
ARBOUR LAKE SCHOOL	856	96%	796	892	8	89%	-7%
BELVEDERE PARKWAY SCHOOL	523	96%	473	543	0	87%	-9%
BOWCROFT SCHOOL	371	78%	363	499	0	73%	-6%
BOWNESS HIGH SCHOOL	1577	94%	1593	1672	0	95%	1%
BRENTWOOD SCHOOL	772	99%	790	778	0	102%	2%
CAPTAIN JOHN PALLISER SCHOOL	616	97%	593	635	0	93%	-4%
CHRISTINE MEIKLE SCHOOL	369	79%	337	466	0	72%	-7%
CITADEL PARK SCHOOL	506	105%	516	481	8	107%	2%
DR. E. W. COFFIN SCHOOL	211	97%	191	218	1	87%	-9%
EDGEMONT SCHOOL	626	94%	589	666	14	88%	-6%
ERIC HARVIE SCHOOL	457	76%	472	602	6	78%	2%
F. E. OSBORNE SCHOOL	736	102%	725	719	0	101%	-2%
H. D. CARTWRIGHT SCHOOL	542	91%	552	593	2	93%	2%
HAWKWOOD SCHOOL	697	107%	725	653	0	111%	4%
MARION CARSON SCHOOL	485	93%	499	521	2	96%	3%
RANCHLANDS SCHOOL	433	87%	453	496	8	91%	4%
ROBERT THIRSK HIGH SCHOOL	1689	113%	1675	1497	0	112%	-1%
ROYAL OAK SCHOOL	591	108%	568	545	10	104%	-4%
SCENIC ACRES SCHOOL	193	106%	186	183	7	101%	-4%
SILVER SPRINGS SCHOOL	272	95%	257	286	1	90%	-5%
SIMON FRASER SCHOOL	706	93%	712	690	6	103%	10%
SIR WINSTON CHURCHILL HIGH SCHOOL	2387	119%	2343	2014	12	116%	-2%
TERRACE ROAD SCHOOL	224	73%	262	308	0	85%	12%
THE HAMPTONS SCHOOL	179	75%	207	240	4	86%	11%
THOMAS B. RILEY SCHOOL	536	77%	552	698	0	79%	2%
TOM BAINES SCHOOL	862	111%	837	776	1	108%	-3%
TUSCANY SCHOOL	593	94%	587	634	14	93%	-1%
TWELVE MILE COULEE SCHOOL	729	82%	769	893	16	86%	5%
WEST DALHOUSIE SCHOOL	338	104%	325	325	6	100%	-4%
WILLIAM D. PRATT SCHOOL	1000	112%	942	894	8	105%	-7%
<b>AREA 1 - TOTAL</b>	<b>20,073</b>	<b>98%</b>	<b>19,884</b>	<b>20,417</b>	<b>134</b>	<b>97%</b>	<b>-1%</b>

# School Capacity and Utilization 2025 - 2026

Attachment IX

- i. The provincial utilization rate of each school building includes lease exemptions as of September 1 of the current year
- ii.  $\text{Weighted Enrolment} = (\text{Kindergarten minus Kindergarten Special Education Severe}) \div 2 + (\text{Kindergarten Special Education Severe multiplied by } 1.5) + (\text{GR } 1\text{-}12 \text{ enrolment minus GR } 1\text{-}12 \text{ Special Education Severe}) + (\text{GR } 1\text{-}12 \text{ Special Education Severe multiplied by } 3)$
- iii.  $\text{Utilization Rate} = \text{Weighted Enrolment} \div \text{Provincial Capacity}$
- iv. \*Capacity values are given as calculated under the Instructional Area Method, currently prescribed by the Province of Alberta

SCHOOL	2024 WEIGHTED ENROLMENT	2024 PROVINCIAL % UTILIZ.	2025 WEIGHTED ENROLMENT	2025* PROVINCIAL CAPACITY	# Of Modulars/ Portables	2025 PROVINCIAL % UTILIZ.	Provincial Utilization Difference (2024 to 2025)
<b>AREA 2</b>							
ALEX MUNRO SCHOOL	292	65%	332	451	0	74%	9%
BALMORAL SCHOOL	587	109%	560	538	0	104%	-5%
BANFF TRAIL SCHOOL	368	88%	392	418	0	94%	6%
BEDDINGTON HEIGHTS SCHOOL	431	87%	468	493	8	95%	7%
BRANTON SCHOOL	724	88%	800	819	6	98%	9%
BUCHANAN SCHOOL	236	97%	219	243	0	90%	-7%
BUFFALO RUBBING STONE SCHOOL	637	106%	603	601	8	100%	-6%
CAMBRIAN HEIGHTS SCHOOL	423	87%	496	487	0	102%	15%
CAPITOL HILL SCHOOL	348	96%	326	362	0	90%	-6%
CAPTAIN NICHOLA GODDARD SCHOOL	1025	114%	1059	897	16	118%	4%
CATHERINE NICHOLS GUNN SCHOOL	446	97%	447	458	0	98%	0%
CHILDREN'S VILLAGE SCHOOL	222	57%	204	393	0	52%	-5%
COLLINGWOOD SCHOOL	481	86%	538	562	0	96%	10%
COLONEL IRVINE SCHOOL	854	109%	869	784	4	111%	2%
COLONEL SANDERS SCHOOL	411	113%	434	363	0	120%	6%
DALHOUSIE SCHOOL	466	98%	505	499	0	101%	3%
DR. J. K. MULLOY SCHOOL	496	100%	498	496	0	100%	1%
GEORGES P. VANIER SCHOOL	618	97%	641	605	0	106%	9%
HIGHWOOD SCHOOL	325	95%	338	341	0	99%	4%
HUNTINGTON HILLS SCHOOL	249	72%	245	346	0	71%	-1%
JAMES FOWLER HIGH SCHOOL	1734	96%	1836	1806	0	102%	6%
JOHN G. DIEFENBAKER HIGH SCHOOL	1416	101%	1567	1463	4	107%	6%
KENNETH D. TAYLOR SCHOOL	666	113%	727	588	14	124%	10%
KING GEORGE SCHOOL	627	102%	615	633	0	97%	-4%
NORTH HAVEN SCHOOL	312	76%	287	411	0	70%	-6%
PANORAMA HILLS SCHOOL	576	97%	551	597	10	92%	-4%
SENATOR PATRICK BURNS SCHOOL	816	94%	598	879	0	68%	-26%
SIR JOHN A. MACDONALD SCHOOL	796	92%	760	867	4	88%	-4%
SIR JOHN FRANKLIN SCHOOL	429	69%	442	618	0	72%	2%
THORNCLIFFE SCHOOL	257	103%	241	249	0	97%	-6%
VARSAITY ACRES SCHOOL	569	92%	545	620	3	88%	-4%
W. O. MITCHELL SCHOOL	313	73%	363	429	6	85%	12%
WILLIAM ABERHART HIGH SCHOOL	1449	86%	1448	1679	4	86%	0%
<b>AREA 2 - TOTAL</b>	<b>19,594</b>	<b>94%</b>	<b>19,947</b>	<b>20,995</b>	<b>87</b>	<b>95%</b>	<b>1%</b>

# School Capacity and Utilization 2025 - 2026

Attachment IX

- i. The provincial utilization rate of each school building includes lease exemptions as of September 1 of the current year
- ii. Weighted Enrolment = (Kindergarten minus Kindergarten Special Education Severe) divided by 2) + (Kindergarten Special Education Severe multiplied by 1.5) + (GR 1-12 enrolment minus GR1-12 Special Education Severe) + (GR1-12 Special Education Severe multiplied by 3)
- iii. Utilization Rate = Weighted Enrolment divided by Provincial Capacity
- iv. \*Capacity values are given as calculated under the Instructional Area Method, currently prescribed by the Province of Alberta

SCHOOL	2024 WEIGHTED ENROLMENT	2024 PROVINCIAL % UTILIZ.	2025 WEIGHTED ENROLMENT	2025* PROVINCIAL CAPACITY	# Of Modulars/ Portables	2025 PROVINCIAL % UTILIZ.	Provincial Utilization Difference (2024 to 2025)
<b>AREA 3</b>							
ABBEYDALE SCHOOL	357	90%	379	417	6	91%	1%
BELFAST SCHOOL	207	72%	168	286	0	59%	-14%
CAPPY SMART SCHOOL	310	83%	285	373	4	76%	-7%
COLONEL MACLEOD SCHOOL	705	104%	707	676	4	105%	0%
COVENTRY HILLS SCHOOL	626	98%	616	638	13	97%	-2%
CRESCENT HEIGHTS HIGH SCHOOL	1813	85%	1865	2143	0	87%	2%
DR. GLADYS MCKELVIE EGBERT SCHOOL	422	79%	445	568	4	78%	-1%
ERIN WOODS SCHOOL	423	88%	443	482	8	92%	4%
ERNEST MORROW SCHOOL	759	82%	685	966	0	71%	-11%
FOREST LAWN HIGH SCHOOL	1667	91%	1681	1810	0	93%	2%
G. W. SKENE SCHOOL	183	64%	199	284	0	70%	6%
HIDDEN VALLEY SCHOOL	543	104%	550	523	10	105%	1%
IAN BAZALGETTE SCHOOL	650	91%	540	796	4	68%	-24%
JACK JAMES HIGH SCHOOL (Includes Louise Dean)	662	80%	663	829	0	80%	0%
JAMES SHORT MEMORIAL SCHOOL	230	49%	233	471	1	50%	1%
KEELER SCHOOL	571	94%	563	609	0	92%	-1%
MOUNT VIEW SCHOOL	201	93%	183	215	0	85%	-8%
NORTH TRAIL HIGH SCHOOL	2244	119%	2277	1869	6	122%	3%
NORTHERN LIGHTS SCHOOL	631	108%	612	584	0	105%	-3%
NOSE CREEK SCHOOL	1011	111%	1090	867	16	126%	15%
NIITSITAPI LEARNING CENTRE	170	50%	180	336	0	54%	3%
PATRICK AIRLIE SCHOOL	289	115%	257	252	0	102%	-13%
PENBROOKE MEADOWS SCHOOL	245	65%	234	377	0	62%	-3%
RADISSON PARK SCHOOL	407	105%	399	388	2	103%	-2%
RIVERSIDE SCHOOL	664	104%	670	640	0	105%	1%
ROLAND MICHENER SCHOOL	238	91%	234	263	0	89%	-2%
ROSEDALE SCHOOL	273	105%	254	259	2	98%	-7%
ROSEMONT SCHOOL	241	103%	238	235	0	101%	-1%
STANLEY JONES SCHOOL	518	93%	468	554	0	84%	-9%
SUNNYSIDE SCHOOL	194	85%	182	228	0	80%	-5%
VALLEY CREEK SCHOOL	855	98%	895	870	12	103%	5%
VALLEY VIEW SCHOOL	595	97%	586	612	0	96%	-2%
VISTA HEIGHTS SCHOOL	168	75%	144	224	0	64%	-11%
WEST DOVER SCHOOL	282	63%	294	447	0	66%	3%
<b>AREA 3 - TOTAL</b>	<b>19,350</b>	<b>92%</b>	<b>19,214</b>	<b>21,091</b>	<b>92</b>	<b>91%</b>	<b>-1%</b>

# School Capacity and Utilization 2025 - 2026

Attachment IX

- i. The provincial utilization rate of each school building includes lease exemptions as of September 1 of the current year
- ii.  $\text{Weighted Enrolment} = (\text{Kindergarten minus Kindergarten Special Education Severe}) \div 2 + (\text{Kindergarten Special Education Severe multiplied by } 1.5) + (\text{GR } 1\text{-}12 \text{ enrolment minus GR } 1\text{-}12 \text{ Special Education Severe}) + (\text{GR } 1\text{-}12 \text{ Special Education Severe multiplied by } 3)$
- iii.  $\text{Utilization Rate} = \text{Weighted Enrolment} \div \text{Provincial Capacity}$
- iv. \*Capacity values are given as calculated under the Instructional Area Method, currently prescribed by the Province of Alberta

SCHOOL	2024 WEIGHTED ENROLMENT	2024 PROVINCIAL % UTILIZ.	2025 WEIGHTED ENROLMENT	2025* PROVINCIAL CAPACITY	# Of Modulars/ Portables	2025 PROVINCIAL % UTILIZ.	Provincial Utilization Difference (2024 to 2025)
<b>AREA 4</b>							
ANNIE FOOTE SCHOOL	484	97%	467	499	9	94%	-3%
ANNIE GALE SCHOOL	641	100%	622	640	8	97%	-3%
BOB EDWARDS SCHOOL	589	97%	587	610	0	96%	0%
CECIL SWANSON SCHOOL	391	86%	382	453	6	84%	-2%
CHIEF JUSTICE MILVAIN SCHOOL	556	106%	585	525	10	111%	6%
CHRIS AKKERMAN SCHOOL	612	113%	631	541	6	117%	4%
CLARENCE SANSOM SCHOOL	838	106%	874	781	8	112%	6%
COLONEL J. FRED SCOTT SCHOOL	466	98%	386	475	8	81%	-17%
CROSSING PARK SCHOOL	1097	114%	1058	963	15	110%	-4%
DOUGLAS HARKNESS SCHOOL	335	100%	321	335	2	96%	-4%
DR. GORDON HIGGINS SCHOOL	762	112%	778	680	8	114%	2%
FALCONRIDGE SCHOOL	565	98%	563	576	12	98%	0%
GRANT MACEWAN SCHOOL	628	110%	717	571	18	126%	16%
GUY WEADICK SCHOOL	411	96%	476	430	6	111%	15%
HUGH A. BENNETT SCHOOL	662	115%	707	576	4	123%	8%
LESTER B. PEARSON HIGH SCHOOL	1748	112%	1740	1567	0	111%	-1%
LOUISE DEAN SCHOOL	41	19%					
MANMEET SINGH BHULLAR SCHOOL	526	99%	549	533	6	103%	4%
MARLBOROUGH SCHOOL	308	90%	325	336	0	97%	6%
MAYLAND HEIGHTS SCHOOL	436	85%	440	536	0	82%	-3%
MONTEREY PARK SCHOOL	601	92%	672	657	17	102%	11%
NELSON MANDELA HIGH SCHOOL	2033	125%	2092	1626	6	129%	4%
O. S. GEIGER SCHOOL	562	110%	567	511	9	111%	1%
PETER LOUGHEED SCHOOL	1022	107%	1085	957	12	113%	7%
PINERIDGE SCHOOL	482	105%	416	457	6	91%	-15%
PRAIRIE SKY SCHOOL	923	101%	1135	916	7	124%	23%
RUNDLE SCHOOL	509	95%	534	536	10	100%	5%
SADDLE RIDGE SCHOOL	628	107%	622	587	12	106%	-1%
SIR WILFRID LAURIER SCHOOL	493	93%	497	528	0	94%	1%
TARADALE SCHOOL	634	99%	649	643	10	101%	2%
TED HARRISON SCHOOL	978	110%	979	888	16	110%	0%
TERRY FOX SCHOOL	640	91%	680	705	0	97%	6%
<b>AREA 4 - TOTAL</b>	<b>21,597</b>	<b>104%</b>	<b>22,132</b>	<b>20,638</b>	<b>231</b>	<b>107%</b>	<b>4%</b>

# School Capacity and Utilization 2025 - 2026

Attachment IX

- i. The provincial utilization rate of each school building includes lease exemptions as of September 1 of the current year
- ii. Weighted Enrolment = (Kindergarten minus Kindergarten Special Education Severe) divided by 2) + (Kindergarten Special Education Severe multiplied by 1.5) + (GR 1-12 enrolment minus GR1-12 Special Education Severe) + (GR1-12 Special Education Severe multiplied by 3)
- iii. Utilization Rate = Weighted Enrolment divided by Provincial Capacity
- iv. \*Capacity values are given as calculated under the Instructional Area Method, currently prescribed by the Province of Alberta

SCHOOL	2024 WEIGHTED ENROLMENT	2024 PROVINCIAL % UTILIZ.	2025 WEIGHTED ENROLMENT	2025* PROVINCIAL CAPACITY	# Of Modulars/ Portables	2025 PROVINCIAL % UTILIZ.	Provincial Utilization Difference (2024 to 2025)
<b>AREA 5</b>							
ACADIA SCHOOL	449	91%	451	493	0	91%	0%
AUBURN BAY SCHOOL	601	100%	587	604	6	97%	-2%
BAYSIDE SCHOOL	604	107%	632	588	6	108%	1%
BRIDLEWOOD SCHOOL	506	87%	531	584	12	91%	4%
CENTENNIAL HIGH SCHOOL	1988	124%	1967	1598	0	123%	-1%
CHAPARRAL SCHOOL	513	106%	528	484	8	109%	3%
COPPERFIELD SCHOOL	608	105%	596	579	12	103%	-2%
CRANSTON SCHOOL	570	96%	612	596	12	103%	7%
DEER RUN SCHOOL	379	87%	373	434	6	86%	-1%
DOUGLASDALE SCHOOL	378	85%	363	447	8	81%	-3%
DR. GEORGE STANLEY SCHOOL	918	101%	1022	913	8	112%	11%
DR. MARTHA COHEN SCHOOL	928	98%	969	947	0	102%	4%
FAIRVIEW SCHOOL	923	93%	967	994	0	97%	4%
FISH CREEK SCHOOL	589	91%	594	647	0	92%	1%
HAULTAIN MEMORIAL SCHOOL	191	65%	185	293	0	63%	-2%
JOANE CARDINAL-SCHUBERT HIGH SCHOOL	2060	128%	1980	1615	6	123%	-5%
LAKE BONA VISTA SCHOOL	356	90%	406	397	2	102%	13%
LAKESHORE SCHOOL	1031	106%	1039	971	0	107%	1%
LE ROI DANIELS SCHOOL	527	94%	543	563	2	96%	3%
LORD BEAVERBROOK HIGH SCHOOL	2293	102%	2361	2256	1	105%	3%
MAHOGANY SCHOOL	768	130%	859	591	4	145%	15%
MAPLE RIDGE SCHOOL	363	85%	374	426	0	88%	3%
MCKENZIE HIGHLANDS SCHOOL	831	88%	814	947	0	86%	-2%
MCKENZIE LAKE SCHOOL	621	95%	642	655	2	98%	3%
MCKENZIE TOWNE SCHOOL	580	85%	586	679	8	86%	1%
MIDNAPORE SCHOOL	428	79%	467	543	12	86%	7%
MIDSUN SCHOOL	764	87%	746	962	0	78%	-9%
MOUNTAIN PARK SCHOOL	632	78%	658	813	16	81%	3%
NEW BRIGHTON SCHOOL	583	101%	587	579	12	101%	1%
PRINCE OF WALES SCHOOL	321	84%	341	381	4	90%	5%
R. T. ALDERMAN SCHOOL	735	89%	778	826	1	94%	5%
SAMUEL W. SHAW SCHOOL	912	86%	976	1065	12	92%	6%
SIBYLLA KIDDLE SCHOOL	605	106%	566	573	0	99%	-7%
SOMERSET SCHOOL	251	67%	224	374	0	60%	-7%
WILLOW PARK SCHOOL	661	99%	690	670	0	103%	4%
WILMA HANSEN SCHOOL	461	74%	451	623	8	72%	-2%
<b>AREA 5 - TOTAL</b>	<b>25,924</b>	<b>97%</b>	<b>26,461</b>	<b>26,710</b>	<b>168</b>	<b>99%</b>	<b>2%</b>

# School Capacity and Utilization 2025 - 2026

Attachment IX

- i. The provincial utilization rate of each school building includes lease exemptions as of September 1 of the current year
- ii.  $\text{Weighted Enrolment} = (\text{Kindergarten minus Kindergarten Special Education Severe}) \div 2 + (\text{Kindergarten Special Education Severe multiplied by } 1.5) + (\text{GR } 1\text{-}12 \text{ enrolment minus GR } 1\text{-}12 \text{ Special Education Severe}) + (\text{GR } 1\text{-}12 \text{ Special Education Severe multiplied by } 3)$
- iii.  $\text{Utilization Rate} = \text{Weighted Enrolment} \div \text{Provincial Capacity}$
- iv. \*Capacity values are given as calculated under the Instructional Area Method, currently prescribed by the Province of Alberta

SCHOOL	2024 WEIGHTED ENROLMENT	2024 PROVINCIAL % UTILIZ.	2025 WEIGHTED ENROLMENT	2025* PROVINCIAL CAPACITY	# Of Modulars/ Portables	2025 PROVINCIAL % UTILIZ.	Provincial Utilization Difference (2024 to 2025)
<b>AREA 6</b>							
A. E. CROSS SCHOOL	689	78%	647	886	0	73%	-5%
ALTADORE SCHOOL	367	92%	354	397	0	89%	-3%
ALTERNATIVE HIGH SCHOOL	275	102%	252	271	0	93%	-9%
ANDREW SIBBALD SCHOOL	313	70%	326	447	0	73%	3%
BANTING AND BEST SCHOOL	195	78%	176	250	0	70%	-8%
BRAESIDE SCHOOL	232	42%	213	552	0	39%	-4%
CANYON MEADOWS SCHOOL	447	82%	412	546	0	75%	-7%
CEDARBRAE SCHOOL	221	80%	221	276	0	80%	0%
CENTRAL MEMORIAL HIGH SCHOOL	1777	92%	1822	2572	0	71%	-22%
CHINOOK PARK SCHOOL	520	76%	539	683	0	79%	3%
DAVID THOMPSON SCHOOL	659	93%	708	706	0	100%	7%
DR. E. P. SCARLETT HIGH SCHOOL	1873	121%	1932	1543	0	125%	4%
DR. FREDA MILLER SCHOOL	488	83%	502	587	0	85%	2%
EMILY FOLLENSBEE SCHOOL	258	96%	254	269	0	94%	-2%
ETHEL M. JOHNSON SCHOOL	322	61%	404	527	0	77%	16%
EUGENE COSTE SCHOOL	359	72%	397	589	0	67%	-5%
EVERGREEN SCHOOL	526	99%	563	533	12	106%	7%
GLENBROOK SCHOOL	302	86%	300	353	0	85%	-1%
GLENMEADOWS SCHOOL	376	73%	371	516	9	72%	-1%
HAROLD PANABAKER SCHOOL	420	71%	455	592	4	77%	6%
HAYSBORO SCHOOL	216	81%	237	266	0	89%	8%
HENRY WISE WOOD HIGH SCHOOL	2119	105%	2036	2154	0	95%	-10%
JANET JOHNSTONE SCHOOL	484	95%	520	507	8	103%	7%
JOHN WARE SCHOOL	455	76%	458	603	1	76%	1%
LOUIS RIEL SCHOOL	920	106%	939	867	4	108%	2%
MARSHALL SPRINGS SCHOOL	760	86%	769	881	0	87%	1%
NELLIE MCCLUNG SCHOOL	365	72%	367	510	0	72%	0%
NICKLE SCHOOL	401	54%	534	713	3	75%	21%
RIVERBEND SCHOOL	312	62%	301	502	2	60%	-2%
ROBERT WARREN SCHOOL	321	68%	331	472	3	70%	2%
RON SOUTHERN SCHOOL	562	98%	585	571	6	102%	4%
SAM LIVINGSTON SCHOOL	371	64%	366	576	6	64%	-1%
SHERWOOD SCHOOL	435	65%	398	669	0	60%	-6%
SUNDANCE SCHOOL	536	107%	545	500	8	109%	2%
WOODBINE SCHOOL	411	91%	403	415	7	97%	7%
WOODLANDS SCHOOL	256	64%	283	402	4	70%	7%
WOODMAN SCHOOL	581	69%	580	846	0	69%	0%
<b>AREA 6 - TOTAL</b>	<b>20,120</b>	<b>85%</b>	<b>20,494</b>	<b>24,549</b>	<b>77</b>	<b>84%</b>	<b>-1%</b>



# School Capacity and Utilization 2025 - 2026

Attachment IX

- i. The provincial utilization rate of each school building includes lease exemptions as of September 1 of the current year
- ii.  $\text{Weighted Enrolment} = (\text{Kindergarten minus Kindergarten Special Education Severe}) \div 2 + (\text{Kindergarten Special Education Severe multiplied by } 1.5) + (\text{GR } 1\text{-}12 \text{ enrolment minus GR } 1\text{-}12 \text{ Special Education Severe}) + (\text{GR } 1\text{-}12 \text{ Special Education Severe multiplied by } 3)$
- iii.  $\text{Utilization Rate} = \text{Weighted Enrolment} \div \text{Provincial Capacity}$
- iv. \*Capacity values are given as calculated under the Instructional Area Method, currently prescribed by the Province of Alberta

SCHOOL	2024 WEIGHTED ENROLMENT	2024 PROVINCIAL % UTILIZ.	2025 WEIGHTED ENROLMENT	2025* PROVINCIAL CAPACITY	# Of Modulars/ Portables	2025 PROVINCIAL % UTILIZ.	Provincial Utilization Difference (2024 to 2025)
<b>AREA 7</b>							
ALEXANDER FERGUSON SCHOOL	227	93%	218	245	0	89%	-4%
ALL BOYS PROGRAM	59	23%					
BATTALION PARK SCHOOL	555	82%	514	677	12	76%	-6%
BISHOP PINKHAM SCHOOL	636	83%	675	769	0	88%	5%
BRIAR HILL SCHOOL	230	83%	212	278	0	76%	-7%
COLONEL WALKER SCHOOL (Includes Piitoayis)	430	64%	448	668	0	67%	3%
CONNAUGHT SCHOOL	458	115%	545	399	6	137%	22%
DR. OAKLEY SCHOOL	210	49%	229	430	0	53%	5%
DR. ROBERTA BONDAR SCHOOL	598	107%	574	560	0	102%	-4%
EARL GREY SCHOOL	329	94%	262	349	0	75%	-19%
ELBOW PARK SCHOOL	229	83%	228	276	0	82%	-1%
ELBOYA SCHOOL	739	96%	577	767	6	75%	-21%
ERNEST MANNING HIGH SCHOOL	1948	116%	2095	1678	0	125%	9%
GLAMORGAN SCHOOL	736	109%	738	677	2	109%	0%
GLENDALE SCHOOL	246	76%	242	325	0	74%	-1%
GRIFFITH WOODS SCHOOL	977	112%	978	869	0	113%	0%
HILLHURST SCHOOL	312	87%	303	357	0	85%	-2%
JENNIE ELLIOTT SCHOOL	613	89%	594	685	0	87%	-3%
KILLARNEY SCHOOL	333	89%	337	373	0	90%	1%
MOUNT ROYAL SCHOOL	452	100%	462	453	0	102%	2%
OLYMPIC HEIGHTS SCHOOL	519	79%	479	629	10	76%	-3%
QUEEN ELIZABETH SCHOOL	425	110%	421	384	2	110%	0%
QUEEN ELIZABETH HIGH SCHOOL	1192	86%	1168	1321	0	88%	2%
RAMSAY SCHOOL	310	89%	282	349	0	81%	-8%
RICHMOND SCHOOL	371	134%	372	342	0	109%	-25%
RIDEAU PARK SCHOOL	469	99%	451	473	0	95%	-4%
SIMONS VALLEY SCHOOL	716	117%	695	614	16	113%	-3%
SUNALTA SCHOOL	371	90%	368	410	0	90%	-1%
UNIVERSITY SCHOOL	373	69%	341	537	0	63%	-6%
VINCENT MASSEY SCHOOL	919	100%	879	922	0	95%	-4%
WEST RIDGE SCHOOL	884	97%	884	916	8	97%	0%
WEST SPRINGS SCHOOL	597	100%	577	596	12	97%	-3%
WESTERN CANADA HIGH SCHOOL	2351	111%	2307	2128	0	108%	-2%
WESTGATE SCHOOL	566	78%	569	727	0	78%	0%
WILDWOOD SCHOOL	612	99%	606	618	0	98%	-1%
WILLIAM REID SCHOOL	274	92%	286	298	4	96%	4%
WINDSOR PARK SCHOOL			162	197	0	82%	82%
<b>AREA 7 - TOTAL</b>	<b>21,259</b>	<b>95%</b>	<b>21,071</b>	<b>22,296</b>	<b>78</b>	<b>95%</b>	<b>-1%</b>
<b>GRAND TOTALS</b>	<b>147,915</b>	<b>95%</b>	<b>149,202</b>	<b>156,696</b>	<b>867</b>	<b>95%</b>	<b>0%</b>

## 2025-2026 LEASED SPACE IN OPERATING CBE SCHOOLS

(includes both full-time and part-time leases)

CBE AREA	SCHOOL NAME	LICENSEE NAME	AREA (SQ.M)
1	Belvedere Parkway	Kids Love Bowness	226.7
1	Bowcroft	Children Come First Association	435.4
1	Captain John Palliser	Captain John Palliser Out-of-School Care	346.0
1	Dr. E.W. Coffin	Millennium Kidz N Kare	224.4
1	Edgemont	Excel Kindergarten <b>*NEW</b>	67.1
1	Eric Harvie	Coded Minds	609.0
1	Hawkwood	Children Come First Association	337.5
1	Marion Carson	Pre-Kindergarten Educational Services	88.5
1	Marion Carson	Society of Briar Hill Children's Programs	357.5
1	Silver Springs	Topp Kids	335.5
1	Terrace Road	Summit Kids	276.3
1	Tuscany	Coded Minds	434.7
1	West Dalhousie	Dalhousie Community Association	348.5
2	Alex Munro	Active Minds Childcare	178.9
2	Banff Trail	Children Come First Association	346.1
2	Buchanan	Core Compass	143.7
2	Buffalo Rubbing Stone	Mighty Learner	343.7
2	Cambrian Heights	Children Come First Association	340.2
2	Capitol Hill	Adventurers School Age Care	354.0
2	Catherine Nichols Gunn	Children Come First Association	358.6
2	Collingwood	Adventurers School Age Care	350.1
2	Colonel Sanders (TLC)	Northmount Student Care	253.9
2	Dalhousie	Dalhousie Community Association	431.8
2	Highwood	Children Come First Association	435.5
2	Huntington Hills	Summit Kids	279.1
2	Kenneth D. Taylor	Children Come First Association	341.9
2	King George	Pleasant Heights After School Care	333.1
2	North Haven	Children Come First Association	403.2
2	Panorama Hills	Pleasant Heights After School Care	337.0
2	Varsity Acres	Seeds of S.P.I.C.E Early Learning Centre	405.3
2	W.O. Mitchell	Summit Kids	441.5
3	Belfast	Belfast Student Care	269.8
3	Coventry Hills	Topp Kids	439.2
3	Hidden Valley	Core Compass	339.2
3	Jack James High	Kindred Connections Society	1,009.0
3	Mount View	Creative World	172.5
3	Niitsitapi Learning Centre	Alberta Health Services (Elbow River Healing Lodge)	17.8
3	Northern Lights School	Little Steps Before and After School Care	429.2
3	Riverside Bungalow	Wee Wild Ones	0.0
3	Rosemont	Society of Briar Hill Children's Programs	222.2
3	Stanley Jones	Adventures Child Care	363.8
3	Sunnyside	Pre-Kindergarten Educational Services	104.2
3	Sunnyside	Sunnyside Out-of-School Care	109.6
4	Marlborough	Kidzclub Calgary	178.7
4	Mayland Heights	Society of Briar Hill Children's Programs	453.1
4	Taradale	Student Care Inc. o/a Taradale Student Care	201.0
5	Acadia	Adventures Child Care	359.8
5	Auburn Bay	Topp Kids	457.8
5	Bayside	Topp Kids	429.3

## 2025-2026 LEASED SPACE IN OPERATING CBE SCHOOLS

(includes both full-time and part-time leases)

CBE AREA	SCHOOL NAME	LICENSEE NAME	AREA (SQ.M)
5	Bridlewood	Topp Kids	337.8
5	Chaparral	Juvenescence Child Development Centre	436.4
5	Copperfield	Topp Kids	343.7
5	Cranston	Juvenescence Child Development Centre	330.0
5	Douglasdale	A Step Ahead	154.2
5	Fish Creek	1st Class - After Class	439.8
5	Lake Bonavista	Rec House	226.2
5	Mahogany	1st Class Innovative Child Care Solutions	434.4
5	Maple Ridge	Topp Kids	319.4
5	McKenzie Lake	Foundation	436.6
5	McKenzie Towne	Rec House	340.4
5	Midnapore	Mid-Sun Child Care	311.9
5	New Brighton	1st Class - After Class	343.7
5	Prince Of Wales	Topp Kids	448.1
5	Sibylla Kiddle School	1st Class - After Class	429.2
5	Somerset	1st Class Innovative Child Care Solutions	299.7
6	Altadore	Seeds of S.P.I.C.E Early Learning Centre	331.1
6	Andrew Sibbald	Rec House	424.9
6	Banting and Best	Coded Minds	265.4
6	Cedarbrae	Adventures Child Care	471.7
6	Chinook Park	Adventurers School Age Care	445.7
6	Dr. Freda Miller School	Seeds of S.P.I.C.E Early Learning Centre	371.0
6	Ethel M. Johnson	Adventures Child Care	350.4
6	Eugene Coste	Calgary Child's Play	673.5
6	Evergreen	Topp Kids Foundation	412.8
6	Glenbrook	Glenbrook Preschool	72.7
6	Glenbrook	Maple Roots	180.9
6	Glenmeadows	Calgary Child's Play	332.1
6	Haysboro	Maple Roots	261.0
6	Janet Johnstone	Creations Child Care	340.0
6	Nellie McClung	Summit Kids	373.5
6	Ron Southern	1st Class - After Class	452.3
6	Sam Livingston	Rec House	540.9
6	Sundance	Children Can Succeed	226.8
6	Woodbine	1st Class Innovative Child Care Solutions	334.8
6	Woodlands	Creations Child Care <b>*NEW</b>	513.9
7	Alexander Ferguson	Alexander Ferguson Elementary School Society	255.0
7	Battalion Park	Kidzinc School Care	281.9
7	Briar Hill	Society of Briar Hill Children's Programs	384.8
7	Connaught	Churchill Park Family Care	222.1
7	Dr. Roberta Bondar	Summit Kids	341.2
7	Earl Grey	Little Steps Before and After School Care	342.6
7	Elbow Park	Calgary Child's Play	434.3
7	Glamorgan	Maple Roots	241.0
7	Glendale	Calgary Child's Play	262.4
7	Jennie Elliott	Jennie Elliott Student Care	445.3
7	Killarney	Kidzinc School Care	255.3
7	Olympic Heights	Kidzinc School Care	349.2
7	Queen Elizabeth	Adventurers School Age Care	264.7

**2025-2026 LEASED SPACE IN OPERATING CBE SCHOOLS**

(includes both full-time and part-time leases)

<b>CBE AREA</b>	<b>SCHOOL NAME</b>	<b>LICENSEE NAME</b>	<b>AREA (SQ.M)</b>
7	Ramsay	Coded Minds Canada	228.5
7	Richmond	Core Compass	233.7
7	Rideau Park	Summit Kids	81.3
7	Simons Valley	Coded Minds	309.1
7	Sunalta	Sunalta Student Care	401.1
7	University	Summit Kids	469.2
7	West Springs	Maple Roots	332.5
7	Westgate	Calgary Child's Play	534.4
7	Wildwood	Kidzinc School Care	275.3
7	William Reid	Seeds of S.P.I.C.E Early Learning Centre	322.2
7	Windsor Park	Klub Before and After School Care <b>*NEW</b>	287.7

AREA 1; 4,087.1  
 AREA 2: 6,077.6  
 AREA 3: 3,476.5  
 AREA 4: 832.8  
 AREA 5: 6,878.4  
 AREA 6: 7,375.4  
 AREA 7: 7,554.8

**TOTAL SQUARE METERS LEASED: 36,282.6**

**2025-2026 LEASE OF SURPLUS SCHOOL FACILITIES**

<b>CBE AREA</b>	<b>SCHOOL NAME</b>	<b>LESSEE NAME</b>	<b>AREA (SQ. M)</b>
1	Belvedere Parkway Bungalow	Thornhill Child Care	373.20
1	Parkdale	Westmount Charter School	6,375.00
3	Greenvview	Foundations for the Future Charter Academy	4,669.40
3	Riverside Bungalow	Wilderchild Futures Incorporated	926.44
4	Mountain View	Almadina Language Charter Academy	3,853.20
5	Alice M Curtis	Foundations for the Future Charter Academy	3,441.50
5	Andrew Davison	Foundations for the Future Charter Academy	4,309.00
6	Lakeview	Calgary Girls Charter Academy	3,594.00
6	Ogden	Almadina Language Charter Academy	4,887.80
6	Southwood	Foundations for the Future Charter Academy	4,192.00
7	Clem Gardner	Connect Charter School	7,107.00
7	Knob Hill	Calgary Arts Charter Academy	2,270.60
7	Rosscarrock	Calgary Arts Charter Academy	3,330.10
7	Sir James Loughheed	Calgary Criminal Justice Academy	2,131.80
7	Sir William Van Horne	Westmount Charter School	9,670.00

AREA 1:	6,748.20
AREA 2:	-
AREA 3:	5,595.84
AREA 4:	3,853.20
AREA 5:	7,750.50
AREA 6:	12,673.80
AREA 7:	<u>24,509.50</u>

**TOTAL SQUARE METRES LEASED: 61,131.04**