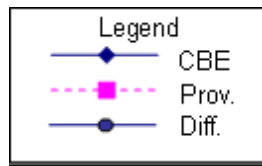
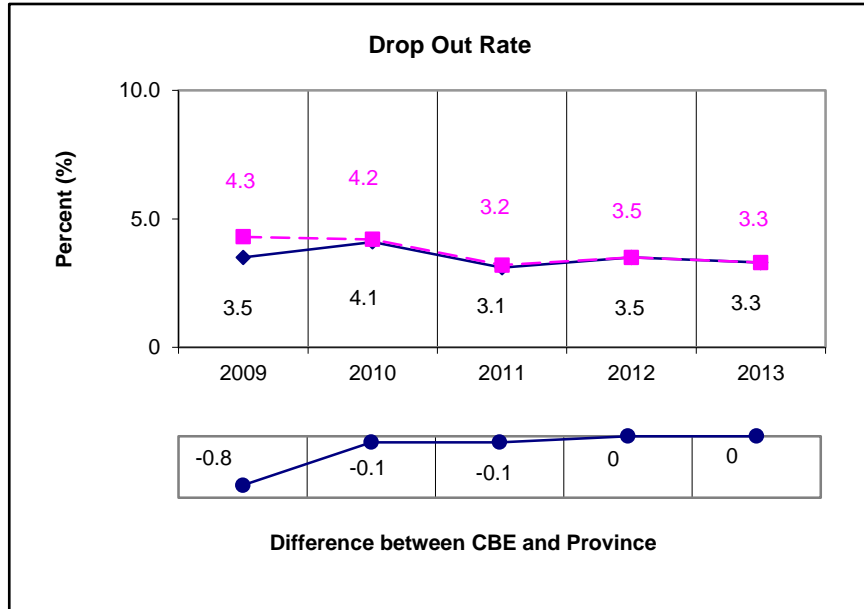


Dropout Rate*

Reporting Year: 2012/2013



* Students aged 14 to 18 on September 30th of a given school year are considered to have dropped out if, in the following year, there is no evidence of their participation in the learning system, including post-secondary and apprenticeship programs, and they have not completed high school. Students who dropped out but return to the learning system the following year are included in the Returning Rate.