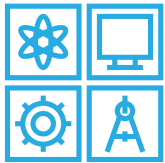


Since 2019, we have been working on a sustainable plan that balances enrolment across CBE high schools and gives students access, flexibility and choice in programming.

We have now developed a proposed plan that reflects what we have heard from you over the past two years. It also aligns with CBE planning principles and considers available space and resources as well as financial sustainability.

The proposed plan provides quality learning opportunities that allow students to meet the requirements to complete high school. It does this in three key ways.



Provides a more equitable learning experience for all high school students.



Maintains a regular program at every high school.



Allows for alternative programs and academic enrichment when criteria are met.

Our approach allocates resources where they will have the most positive impact for students overall.

The proposed plan blends elements of the two scenarios shared in March 2021:

Regular Program: A & B

- Designations for regular program students may be from Scenario A or B.

French Immersion: A & B

- Three locations will be maintained from Scenario B (Dr. E.P. Scarlett, Western Canada and William Aberhart).
- Students previously attending Lester B. Pearson for French Immersion will attend Western Canada as in Scenario A.

Spanish Bilingual: A

- The program will be offered at Crescent Heights.

French International Baccalaureate Programme: A

- It will continue at Western Canada at this time (see IB Programme information below).

International Baccalaureate Programme:

- The IB Programme will remain at the five current locations at this time: Henry Wise Wood, John G. Diefenbaker, Lester B. Pearson, Sir Winston Churchill and Western Canada.
- The introduction of a new high school transfer process and changes to IB Programme requirements require more time for evaluation and assessment before a long-term decision can be made for IB and French IB.
- Programme will be assessed over the next few years based on several criteria, including a minimum cohort size of 60 students per grade. Decisions about the five IB programmes and the French IB Programme will be communicated by January 2024 for implementation in September 2025.

Details by school are on pages 4-6. For answers to other questions, please review the information available on our high school engagement webpage and FAQs.

What is Being Decided?

By fall 2021, the CBE will communicate a sustainable system-wide plan for high schools that continues to offer students access, flexibility and choice in programming given available space and resources. The plan will be developed through consultation with affected students, staff, parents and community members, with full implementation of the plan beginning in 2022-2023.

Who is Making the Decision?

The CBE Superintendents' Team will make the final decision.

When Will the Decision be Made?

By June 30, 2021, in response to overall feedback to make the decision as soon as possible.

What is Considered in Decision-Making?

The proposed plan and final decision are informed by the following:

- CBE values and planning principles
- Available space and resources
- Financial sustainability
- Input and feedback from students, staff, parents and community members

What Opportunities Have There Been for Input and Feedback?

People were invited to share their perspectives at multiple points in the process:

Spring 2019 | How People Prefer to Participate

Fall 2019 | Ways to Balance Enrolment

March 2021 | Two Possible Scenarios

June 2021 | Proposed Plan

You can review the feedback that has been provided to date on the high school engagement webpage.








Learn More

You may also review proposed plan enrolment projections and maps, video and Story Map at: cbe.ab.ca/highschoolengagement.

Aligning with CBE Planning Principles

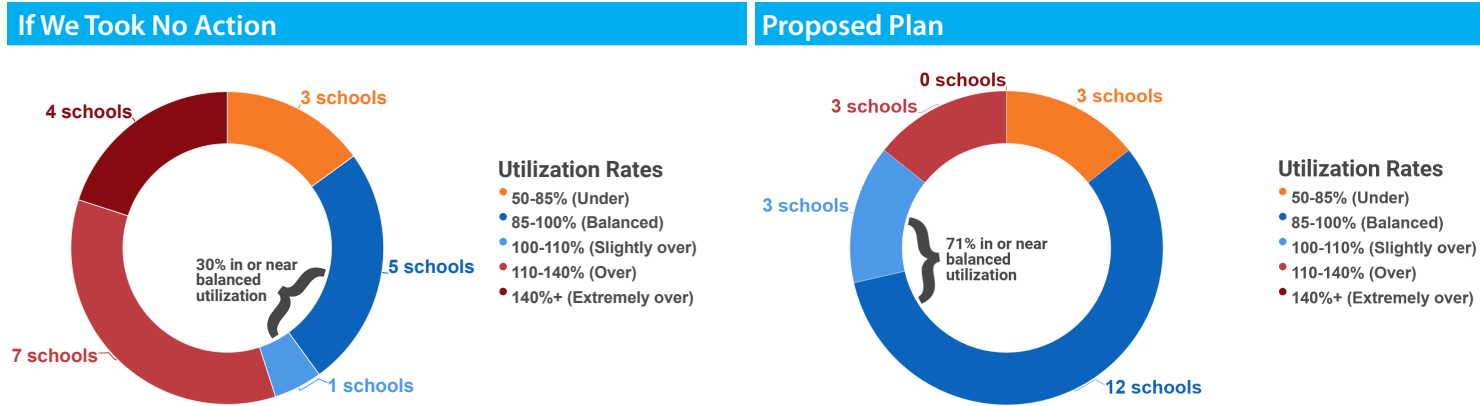
The CBE has seven planning principles that guide student accommodation decisions (school designations, movement of student programs etc.). These are outlined in [AR1090](#).

When multiple schools are involved, all seven planning principles cannot be met for every school and each student. Your feedback helped us determine which principles should take priority.

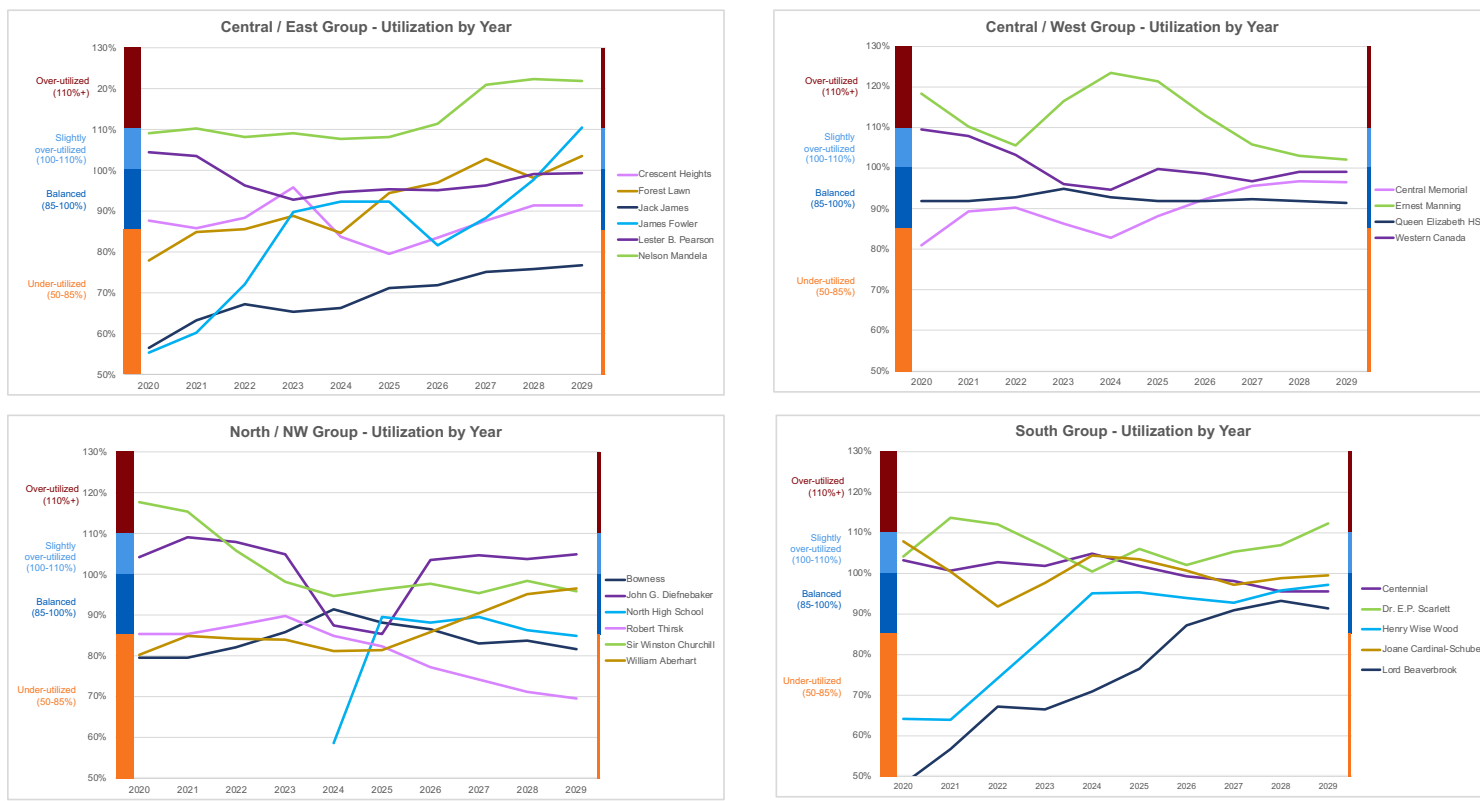
Planning Principle	How Addressed in Proposed Plan
 <p>Allow students to attend school as close to home as possible</p>	<ul style="list-style-type: none"> Over 90 per cent of regular program students are the same distance or closer to school. 99 per cent of regular program students who were in the walk zone are still in a walk zone. Regular program students are within the CBE transportation guidelines.
 <p>Use space and resources effectively</p>	<ul style="list-style-type: none"> Consolidation of alternative programs is proposed due to limited space and resources into the future. This includes the elimination of the Arts-Centred Learning Program, consolidating the Spanish Bilingual Program from two sites to one site and consolidating the French Immersion Program from four sites to three sites.
 <p>Provide long term sustainability</p>	<ul style="list-style-type: none"> In 2019, five out of 20 schools were at 85-100 per cent utilization. By 2029, one additional high school will have opened and 15 out of 21 schools are projected to be in or near the balanced utilization range of 85-100 per cent. In balancing enrolment and consolidating programs, we are able to better fund operation and maintenance of high schools.
 <p>Provide equitable access for all students to quality learning environments and choice of programs</p>	<ul style="list-style-type: none"> The regular program is maintained in all 21 high schools, providing access for more students to attend school close to home. The consolidation of programs will provide a more equitable learning experience for all high school students. Students can experience similar class sizes, similar learning opportunities and less overcrowding and limitations on scheduling classes. By providing alternative programs and academic enrichment when criteria are met, students will continue to have choice beyond the regular program. The flexibility (online learning options, personalized student timetables, learning accommodations and other opportunities) currently offered to high school students is maintained in this proposed plan.
 <p>Minimize disruptions for students</p>	<ul style="list-style-type: none"> From a student perspective, about four out of five regular program students will attend the same school as currently designated. From a community perspective, 74 per cent of communities continue to attend the same school as currently designated. Regular program students attending the school in the 2021-22 can stay to complete their program; this does not apply to siblings at other schools. There will be a transition for students designated to the north high school, specifically Grade 10 students will start in one school and complete Grades 11 and 12 at the north high school. Students enrolled in Arts-Centred Learning in 2021-22 can complete the program at the school where they started. Students enrolled in the Spanish Bilingual Program in 2021-22 can complete the program at the school where they started if there is a minimum of 25 students/grade enrolled. Starting in September 2022, students who were enrolled in French Immersion at Lester B. Pearson will attend Western Canada for French Immersion or attend their designated school for the regular program.
 <p>Provide program continuity from kindergarten to Grade 12</p>	<ul style="list-style-type: none"> K-12 continuity has been maintained for the regular program, French Immersion Program and Spanish Bilingual Program. It will no longer be offered for Arts-Centred Learning. It is not applicable to IB or AP, which are only offered in high school.
 <p>Keep cohort groups of students together</p>	<ul style="list-style-type: none"> Currently there are 16 communities where middle school student cohorts are not designated to the same high school. In the proposed plan, this is reduced to nine communities. These nine communities continue to have split high school designations because of physical constraints such as major roadways that divide communities as well as the desire to keep students within the walk zone wherever possible.

Balancing Enrolment at CBE High Schools

By implementing the proposed plan, 15 out of 21 high schools (71 per cent) will be in or near the balanced utilization range. That is more than double the number of schools that would be in this range if we took no action.



Utilization Rates by School



Reflecting Changes at Each School

School	Current	Proposed Plan	Rationale
Bowness High School	Regular Program	Regular Program - Coach Hill, Cougar Ridge, Haskayne (new community) and Patterson added	<ul style="list-style-type: none"> Haskayne is close to the school. Communities are as close or closer to Bowness. Reflects feedback from the communities of Coach Hill, Cougar Ridge and Patterson. If public transportation meeting CBE guidelines is not available by 2022, yellow bus service with applicable fees will be provided. Enrolment will continue to be monitored for additional program opportunities such as intake of international students and system classes.
Centennial High School	Regular Program	Regular Program - Walden added	<ul style="list-style-type: none"> Students attend school closer to home.
Central Memorial School	Regular Program	Regular Program <ul style="list-style-type: none"> Interim decision maintained for Discovery Ridge, Glenbrook, Glendale, Killarney/Glengarry, Richmond West, Rosscarrock, Shaganappi West, Spruce Cliff, Westgate and Wildwood Altadore (NE), Richmond (NE) and Shaganappi (east) added Ogden and Riverbend redesignated to Henry Wise Wood High School 	<ul style="list-style-type: none"> Redesignated communities are furthest from Ernest Manning. Central Memorial is one of the closest schools to these communities. Ogden and Riverbend - students attend school closer to home. Altadore (NE), Shaganappi (east), Richmond (NE) - students from each community will now attend the same high school together; currently, students within each community attend different high schools.
Crescent Heights High School	Regular Program	Regular Program <ul style="list-style-type: none"> Chinatown and Eau Claire added Country Hills Village, Coventry Hills and Hidden Valley redesignated to the new north high school upon opening* Spanish Bilingual Program - all CBE designated communities	<ul style="list-style-type: none"> Students in Chinatown and Eau Claire are close to Crescent Heights High School. Students in Country Hills Village, Coventry Hills and Hidden Valley attend school closer to home. Students in the Spanish Bilingual Program continue to have a K-12 continuum and will attend a larger program consolidated at one school that is central with good transit access.
Dr. E.P. Scarlett High School	Regular Program French Immersion Program Spanish Bilingual Program	Regular Program <ul style="list-style-type: none"> Walden redesignated to Centennial High School Woodlands/Woodbine option area redesignated; communities redesignated to Henry Wise Wood High School French Immersion Program - no change Spanish Bilingual Program - all all CBE designated communities redesignated to Crescent Heights High School	<ul style="list-style-type: none"> Students in Walden will attend school closer to home. Woodlands and Woodbine designated to the next closest school with space and designated to same school instead of split through an option boundary. Students in the Spanish Bilingual Program continue to have a K-12 continuum and will attend a larger program consolidated at one school that is central with good transit access.
Ernest Manning High School	Regular Program	Regular Program <ul style="list-style-type: none"> Interim decision maintained for Discovery Ridge, Glenbrook, Glendale, Killarney/Glengarry, Richmond West, Rosscarrock, Shaganappi West, Spruce Cliff, Westgate and Wildwood Coach Hill, Cougar Ridge and Patterson redesignated to Bowness High School 	<ul style="list-style-type: none"> Redesignated communities are furthest from Ernest Manning. Central Memorial and Bowness high schools are the next closest schools to these communities. Reflects feedback from the communities of Coach Hill, Cougar Ridge and Patterson.
Forest Lawn High School	Regular Program	Regular Program <ul style="list-style-type: none"> Belvedere (new community) added Redstone and Skyview Ranch redesignated to James Fowler High School 	<ul style="list-style-type: none"> Redesignations reduce enrolment and utilization at the school. Redesignated northeast communities are furthest from Forest Lawn High School. Forest Lawn High School is close to the new community of Belvedere.
Henry Wise Wood High School	Regular Program IB	Regular Program - Bel-Aire, Manchester, Mayfair, Meadowlark Park, Ogden, Riverbend, Windsor Park, and Woodlands/Woodbine added IB - Bel-Aire, Manchester, Mayfair, Meadowlark Park, Ogden, Riverbend and Windsor Park added	<ul style="list-style-type: none"> Most redesignated students attend school closer to home; some will be in the walk zone. Woodlands and Woodbine designated to the next closest school with space and designated to same school instead of split through an option boundary.

* This plan assumes the new north high school will open in 2024. There is a possibility the school could open in 2023, in which case redesignations would occur in 2023.

Reflecting Changes at Each School

School	Current	Proposed Plan	Rationale
Jack James High School	Knowledge and Employability	Knowledge and Employment Program - no change	<ul style="list-style-type: none"> Possibility of campus model with Forest Lawn High School in the future.
James Fowler High School	Regular Program Arts-Centred Learning Program	Regular Program <ul style="list-style-type: none"> Interim decision maintained for Castleridge, Coral Springs and Falconridge Cornerstone, Redstone and Skyview Ranch added Country Hills (north) redesignated to the new north high school upon opening* Evanston, Kincora and Sage Hill redesignated to John G. Diefenbaker High School upon opening of the new north high school* Arts-Centred Learning Program - discontinued	<ul style="list-style-type: none"> Students in Country Hills, Evanston, Kincora and Sage Hill attend school closer to home. Castleridge, Coral Springs and Falconridge designated to James Fowler before Nelson Mandela opened, creating familiarity and relationships. If public transportation meeting CBE guidelines is not available by 2022, yellow bus service with applicable fees will be provided for Cornerstone, Redstone and Skyview Ranch. Projected enrolment in ACL is low; additional space needed for regular program.
Joane Cardinal-Schubert High School	Regular Program	Regular Program <ul style="list-style-type: none"> Interim decision maintained for Douglasdale/glen, McKenzie Lake and McKenzie Towne New Brighton redesignated to Lord Beaverbrook High School in 2025 	<ul style="list-style-type: none"> Redesignated communities are the furthest from Joane Cardinal-Schubert High School; Lord Beaverbrook High School is the next closest high school. There is space for New Brighton at Joane Cardinal-Schubert until September 2025, at which time they will be re-designated to Lord Beaverbrook High School. This allows students to remain as close to home as possible for as long as possible.
John G. Diefenbaker High School	Regular Program IB	Regular Program <ul style="list-style-type: none"> Evanston, Kincora, Macewan Glen, Sage Hill and Sandstone Valley added upon opening of the new north high school* Harvest Hills and Panorama Hills redesignated to the new north high school upon opening* IB - Banff Trail, Briar Hill/Hounsfield Heights, Capitol Hill (west of 14 St. NW), Charleswood (east of Charleswood Dr.), Collingwood, Hillhurst (west of 14 St. NW), and West Hillhurst (east of Crowchild) redesignated to Sir Winston Churchill High School	<ul style="list-style-type: none"> Regular program and IB students will attend school closer to home. Many regular program students will be able to walk to school.
Lester B. Pearson High School	Regular Program French Immersion Program IB	Regular Program - Cornerstone redesignated to James Fowler High School French Immersion Program - all communities redesignated to Western Canada High School IB - no change	<ul style="list-style-type: none"> Small French Immersion cohort is not sustainable. Students will attend larger and more robust program at Western Canada High School.
Lord Beaverbrook High School	Regular Program Arts-Centred Learning Program	Regular Program <ul style="list-style-type: none"> Interim decision maintained for Douglasdale/glen, McKenzie Lake and McKenzie Towne New Brighton added in 2025 Arts-Centred Learning Program - discontinued	<ul style="list-style-type: none"> Redesignated communities are the furthest from Joane Cardinal-Schubert High School; Lord Beaverbrook High School is the next closest high school. There is space for New Brighton at Joane Cardinal-Schubert until September 2025, at which time they will be re-designated to Lord Beaverbrook High School. This allows students to remain as close to home as possible for as long as possible. Projected enrolment in ACL is low; additional space needed for regular program.
Nelson Mandela High School	Regular Program	Regular Program - Interim decision maintained for Castleridge, Coral Springs and Falconridge	<ul style="list-style-type: none"> Redesignated communities are furthest from Nelson Mandela High School. Castleridge, Coral Springs and Falconridge designated to James Fowler before Nelson Mandela opened, creating familiarity and relationships.
North High School	Regular Program	Regular Program - Country Hills (north), Country Hills (south), Country Hills Village, Coventry Hills, Harvest Hills, Hidden Valley and Panorama Hills added upon opening*	<ul style="list-style-type: none"> Students will attend school closer to home.

* This plan assumes the new north high school will open in 2024. There is a possibility the school could open in 2023, in which case redesignations would occur in 2023.

June 1, 2021

Reflecting Changes at Each School

School	Current	Proposed Plan	Rationale
Queen Elizabeth High School	Regular Program	Regular Program <ul style="list-style-type: none"> Macewan Glen and Sandstone Valley redesignated to John G. Diefenbaker High School upon opening of the new north high school* Country Hills (south) redesignateds to the new north high school upon opening* 	<ul style="list-style-type: none"> Students will attend school closer to home.
Robert Thirsk High School	Regular Program	Regular Program - no change	<ul style="list-style-type: none"> Enrolment will continue to be monitored for additional program opportunities such as intake of international students and system classes.
Sir Winston Churchill High School	Regular Program IB	Regular Program - University and University District redesignated to William Aberhart High School IB - Banff Trail, Briar Hill/Hounsfeld Heights, Capitol Hill (west of 14 St.), Charleswood (east of Charleswood Dr.), Collingwood, Hillhurst (west of 14 St.) and West Hillhurst (east of Crowchild) added	<ul style="list-style-type: none"> Regular program and IB students will attend school closer to home.
Western Canada High School	Regular Program French Immersion Program IB French Immersion IB	Regular Program <ul style="list-style-type: none"> Chinatown and Eau Claire redesignated to Crescent Heights High School Altadore (NE), Richmond (NE) and Shaganappi (east) redesignated to Central Memorial High School Bel-Aire, Manchester, Mayfair, Meadowlark Park, Ogden and Windsor Park redesignated to Henry Wise Wood High School French Immersion Program - all communities from Lester B. Pearson High School French Immersion Program added IB - Bel-Aire, Manchester, Mayfair, Meadowlark Park, Ogden, Riverbend and Windsor Park redesignated to Henry Wise Wood High School French Immersion IB - no change	<ul style="list-style-type: none"> Most redesignated students attend school closer to home; some will be in the walk zone. Altadore (NE), Shaganappi (east), Richmond (NE) - students from each community will now attend the same high school together; currently, students within each community attend different high schools. Growth from designated communities is expected to continue. Long term this will mean fewer available spaces for IB and French IB. Enrolment in IB and French IB will be capped to ensure the school stays within an appropriate utilization range.
William Aberhart High School	Regular Program French Immersion Program Spanish Bilingual Program	Regular Program - University and University District added French Immersion Program - no change Spanish Bilingual Program - all communities redesignated to Crescent Heights High School	<ul style="list-style-type: none"> Regular program students will attend school closer to home. Students in the Spanish Bilingual Program continue to have a K-12 continuum and will attend a larger program consolidated at one school that is central with good transit access.

June 1, 2021