

## Considering Possibilities for a Long-Term Strategy

The high level of interest in the Early and Late French Immersion Programs (known as “French Immersion Programs”) in northwest and north central Calgary has resulted in some schools being at or over capacity, which may limit continued growth at these locations. The purpose of engaging stakeholders on this initiative is to gather input and feedback on a long-term strategy for the northwest and north central French Immersion Programs that best meets the learning needs of students. It is important that affected students, parents, staff and community members have an opportunity to share perspectives on these important decisions.

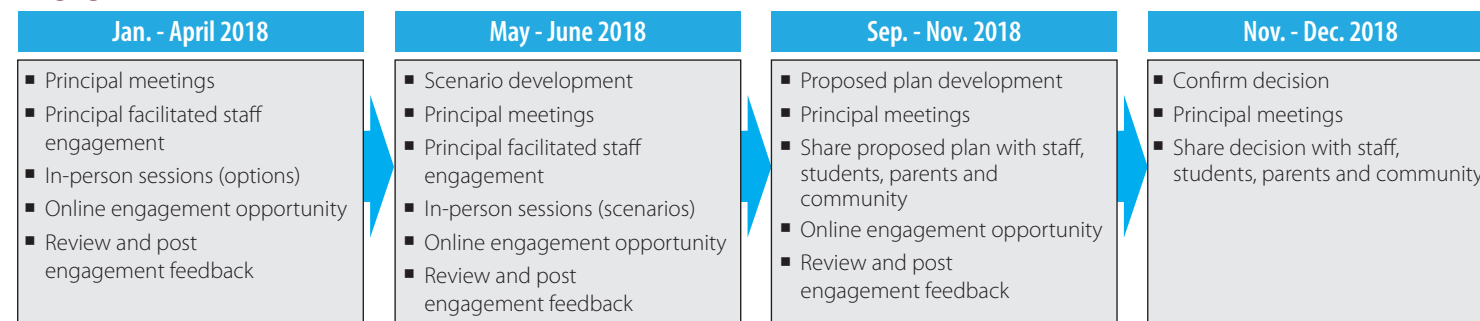
In response to interest, the Calgary Board of Education (CBE) offers families both Early and Late French Immersion Programs. The CBE is committed to providing strong learning opportunities to all our French Immersion students and working with families to explore possibilities for the future. We are not considering discontinuing either program through this engagement process.

We know we make better decisions when we work together to solve problems and find solutions, therefore, our strategy includes three distinct phases of engagement, each offering both in-person and online opportunities for stakeholders to share their thoughts on the future of the northwest and north central French Immersion Programs. Information and feedback gathered in each phase will be incorporated and considered in the next phase.

The first phase provided opportunities to explore factors and options that could be considered in decision-making. As we move through the next two phases (phase two: scenarios and phase three: proposed plans) discussions become more specific as options are added, removed or refined until a decision is made and an implementation plan is developed. The decision and implementation plan will be communicated with staff, parents, students and community members prior to kindergarten registration for the 2019-20 school year. Decisions may be implemented for the 2019-20 school year or later.

This engagement process was developed in alignment with the principles and process outlined in the CBE Dialogue Framework. More information about the framework and this engagement, including the *Northwest and North Central French Immersion Programs Engagement Roadmap*, is available at [www.cbe.ab.ca/dialogue](http://www.cbe.ab.ca/dialogue).

### Engagement Timeline



### What are We Deciding?

By December 2018 the CBE will communicate plans for the long-term strategy for the northwest and north central French Immersion Programs. Plans may be implemented for the 2019-20 school year or later.

### Who is the Decision Maker?

The Area Directors for the identified schools and the Director of Planning and Transportation have joint responsibility for recommendations and decisions with respect to programs, grade configurations, school catchment areas (boundaries) and enrolment caps in CBE schools. Student learning will be at the heart of decision-making.

### Impacted Schools

#### Elementary Schools\*:

- Banff Trail School
- Eric Harvie School
- Hidden Valley School
- King George School
- Tuscany School
- Varsity Acres School

#### Middle/Junior High Schools\*:

- Branton School
- F.E. Osborne School
- Georges P. Vanier School
- Twelve Mile Coulee School
- Valley Creek School

Other school communities may be identified to participate at later stages of the process.

\* 2017-18 Residential Districts and Designated Schools can be found at [cbe.ab.ca/dialogue](http://cbe.ab.ca/dialogue) (Long-Term Strategy for the Northwest and North Central French Immersion Programs). To find your current designated school, use the *Find a School* tool at [cbe.ab.ca](http://cbe.ab.ca).

### Decision-Making Process

The decision-making process will consider all combined input and feedback along with CBE values and planning principles, available space in schools, financial sustainability, government legislation and more. Together, all of this must be carefully considered in making recommendations and decisions.

The CBE values are:

- Students come first.
- Learning is our central purpose.
- Public education serves the common good.

The CBE planning principles are:

- Minimize disruptions for students
- Provide program continuity from kindergarten to Grade 12
- Keep cohort groups of students together
- Allow students to attend school as close to home as possible
- Provide long-term sustainability
- Use space and resources effectively
- Provide equitable access for all students to quality learning environments and choice of programs

It's important to remember that decisions for one school can affect other schools and there is a finite number of students in the CBE system. An increase in the number of students at one school means a decrease in students at other schools.

### Scenario Description and Rationale

The CBE has developed four potential scenarios that consider our values and planning principles, the input and feedback we received to date from staff, parents, students and community members as well as available space in schools, financial sustainability and government legislation. High-level rationale for each scenario is summarized below.

#### Scenario A: Add two new locations, grade configuration change, small amount of boundary changes\*\*

- Some students can attend an Early French Immersion Program (K-9) closer to home
- Minimizes disruption for Late French Immersion Program students
- Room for the Early and Late French Immersion Programs to grow
- Early French Immersion Program students in some communities will move to a new school

#### Scenario B: Add three new locations, several grade configuration changes, boundary changes\*\*

- Some students can attend an Early French Immersion Program (K-9) closer to home
- Minimizes disruption for Late French Immersion Program students
- Room for the Early and Late French Immersion Programs to grow
- Early French Immersion Program students in some communities will move to a new school

#### Scenario C: Add three new locations (two in 2019, one in 2021), several grade configuration changes, boundary changes\*\*

- Some students can attend an Early or Late French Immersion Program closer to home
- Room for the Early and Late French Immersion Programs to grow
- Provides opportunity for some French Immersion students to attend a new elementary location in north Calgary in the future
- Early and Late French Immersion Program students in some communities will move to a new school

#### Scenario D: Cap enrolment at some schools, add a Late French Immersion Program location\*\*

- Provides opportunity for predictability of school enrolment
- Eliminates the risk of schools being over capacity in the future
- Students living in several communities in north Calgary can attend a Late French Immersion Program closer to home
- Limits access and reduces opportunities for students to participate in French Immersion programming

Enrolment projections\*\*\* for the four scenarios have been prepared after analyzing historic enrolment trends and preschool census information about future student populations. Unexpected changes to enrolment patterns or future potential students could cause enrolment to be higher or lower than projected. If future enrolment exceeds space available, an enrolment cap and lottery process may be considered.

\*\* Detailed information about the proposed changes for each school can be found in the accompanying chart.

\*\*\* 5-Year Enrolment Projections are available at [cbe.ab.ca/dialogue](http://cbe.ab.ca/dialogue).

cbe.ab.ca						
Northwest and North Central Early and Late French Immersion Programs – Scenario Overview						
Elementary Schools	<b>School</b> <b>Banff Trail School</b> Instructional Space: 450 2017 Enrolment: 454	<b>Current</b> <b>K-6 Early French Immersion Program</b>	<b>Scenario A</b> <b>K-6 Early French Immersion Program</b> <i>(Projected: 350-400)</i> <ul style="list-style-type: none"> <li>Rocky Ridge/Royal Oak communities move to Tuscany School</li> <li>Edgemont community moves to Varsity Acres School</li> </ul>	<b>Scenario B</b> <b>K-5 Early French Immersion Program</b> <i>(Projected: 400-450)</i> <ul style="list-style-type: none"> <li>Grade 6 moves to Branton School</li> </ul>	<b>Scenario C</b> <b>K-5 Early French Immersion Program</b> <i>(Projected: 325-375)</i> <ul style="list-style-type: none"> <li>Grade 6 moves to Branton School</li> <li>Rocky Ridge/Royal Oak communities move to Tuscany School</li> <li>Edgemont community moves to Varsity Acres School</li> </ul>	<b>Scenario D</b> <b>K-6 Early French Immersion Program</b> <i>(Projected: 425-450)</i> <ul style="list-style-type: none"> <li>Kindergarten and Grade 1 enrolment capped at 50-75 per grade</li> </ul>
	<b>Eric Harvie School</b> Instructional Space: 600 2017 Enrolment: 464	<b>K-4 Regular Program</b>	<b>K-5 Regular Program</b> <i>(Projected: 500-575)</i> <ul style="list-style-type: none"> <li>Grade 5 from the current catchment area added</li> </ul>	<b>K-5 Regular Program</b> <i>(Projected: 500-575)</i> <ul style="list-style-type: none"> <li>Grade 5 from the current catchment area added</li> </ul>	<b>K-5 Regular Program</b> <i>(Projected: 500-575)</i> <ul style="list-style-type: none"> <li>Grade 5 from the current catchment area added</li> </ul>	<b>K-4 Regular Program</b> <i>(Projected: 420-480)</i> <ul style="list-style-type: none"> <li>No change</li> </ul>
	<b>Hidden Valley School</b> Instructional Space: 550 2017 Enrolment: 446 <ul style="list-style-type: none"> <li>Early: 242</li> <li>Regular Program: 204</li> </ul>	<b>K-3 Early French Immersion Program</b>  <b>K-3 Regular Program</b>	<b>K-3 Early French Immersion Program</b> <i>(Projected: 235-250)</i> <ul style="list-style-type: none"> <li>No change</li> </ul> <b>K-3 Regular Program</b> <i>(Projected: 190-205)</i> <ul style="list-style-type: none"> <li>No change</li> </ul> <i>Total Projected: 425-455</i>	<b>K-3 Early French Immersion Program</b> <i>(Projected: 260-285)</i> <ul style="list-style-type: none"> <li>Hamptons, Sherwood communities added</li> </ul> <b>K-3 Regular Program</b> <i>(Projected: 190-205)</i> <ul style="list-style-type: none"> <li>No change</li> </ul> <i>Total Projected: 450-490</i>	<b>K-3 Early French Immersion Program</b> <i>(Projected: 260-285)</i> <ul style="list-style-type: none"> <li>Hamptons, Sherwood communities added</li> </ul> <b>K-3 Regular Program</b> <i>(Projected: 190-205)</i> <ul style="list-style-type: none"> <li>No change</li> </ul> <i>Total Projected: 450-490</i>	<b>K-3 Early French Immersion Program</b> <i>(Projected: 235-250)</i> <ul style="list-style-type: none"> <li>No change</li> </ul> <b>K-3 Regular Program</b> <i>(Projected: 190-205)</i> <ul style="list-style-type: none"> <li>No change</li> </ul> <i>Total Projected: 425-455</i>
	<b>King George School</b> Instructional Space: 650 2017 Enrolment: 607	<b>K-6 Early French Immersion Program</b>	<b>K-4 Early French Immersion Program</b> <i>(Projected: 540-590)</i> <ul style="list-style-type: none"> <li>Grades 5 and 6 move to G.P. Vanier School</li> </ul>	<b>K-5 Early French Immersion Program</b> <i>(Projected: 560-610)</i> <ul style="list-style-type: none"> <li>Grade 6 moves to G.P. Vanier School</li> <li>Evanston, Sage Hill communities move to Varsity Acres School</li> </ul>	<b>K-4 Early French Immersion Program (2019-20)</b> <i>(Projected: 500-560)</i> <ul style="list-style-type: none"> <li>Grades 5 and 6 move to G.P. Vanier School</li> </ul> <b>K-5 Early French Immersion Program (2021 and beyond)</b> <ul style="list-style-type: none"> <li>Grade 5 added from G.P. Vanier School</li> <li>Potential move (communities, school and grades TBD)</li> </ul>	<b>K-6 Early French Immersion Program</b> <i>(Projected: 575-625)</i> <ul style="list-style-type: none"> <li>Kindergarten and Grade 1 enrolment capped at 75-100 per grade</li> </ul>
	<b>Tuscany School</b> Instructional Space: 700 2017 Enrolment: 358	<b>K-4 Regular Program</b>	<b>K-5 Regular Program</b> <i>(Projected: 300-330)</i> <ul style="list-style-type: none"> <li>Grade 5 from the current catchment area added</li> </ul> <b>K-6 Early French Immersion Program</b> <i>(Projected: 300-360)</i> <ul style="list-style-type: none"> <li>For Rocky Ridge/Royal Oak, Tuscany communities</li> </ul> <i>Total Projected: 600-690</i>	<b>K-5 Regular Program</b> <i>(Projected: 300-330)</i> <ul style="list-style-type: none"> <li>Grade 5 from the current catchment area added</li> </ul> <b>K-5 Early French Immersion Program</b> <i>(Projected: 150-190)</i> <ul style="list-style-type: none"> <li>For Tuscany community</li> </ul> <i>Total Projected: 450-520</i>	<b>K-5 Regular Program</b> <i>(Projected: 300-330)</i> <ul style="list-style-type: none"> <li>Grade 5 from the current catchment area added</li> </ul> <b>K-6 Early French Immersion Program</b> <i>(Projected: 300-360)</i> <ul style="list-style-type: none"> <li>For Rocky Ridge/Royal Oak, Tuscany communities</li> </ul> <i>Total Projected: 600-690</i>	<b>K-4 Regular Program</b> <i>(Projected: 250-300)</i> <ul style="list-style-type: none"> <li>No change</li> </ul>
	<b>Varsity Acres School</b> Instructional Space: 625 2017 Enrolment: 563	<b>K-6 Early French Immersion Program</b>	<b>K-6 Early French Immersion Program</b> <i>(Projected: 475-500)</i> <ul style="list-style-type: none"> <li>Edgemont community added</li> <li>Tuscany community moves to Tuscany School</li> </ul>	<b>K-6 Early French Immersion Program</b> <i>(Projected: 475-550)</i> <ul style="list-style-type: none"> <li>Evanston, Sage Hill communities added</li> <li>Tuscany community - K-5 move to Tuscany School, Grade 6 moves to Twelve Mile Coulee School</li> <li>Hamptons, Sherwood communities - K-3 move to Hidden Valley School, Grades 4-6 move to Valley Creek School</li> </ul>	<b>K-6 Early French Immersion Program</b> <i>(Projected: 465-500)</i> <ul style="list-style-type: none"> <li>Edgemont community added</li> <li>Tuscany community moves to Tuscany School</li> <li>Hamptons, Sherwood communities - K-3 move to Hidden Valley School, Grades 4-6 move to Valley Creek School</li> </ul>	<b>K-6 Early French Immersion Program</b> <i>(Projected: 525-575)</i> <ul style="list-style-type: none"> <li>No change</li> </ul>
Middle/Junior High Schools	<b>Branton School</b> Instructional Space: 835 2017 Enrolment: 718 <ul style="list-style-type: none"> <li>Early: 348</li> <li>Late: 370</li> </ul>	<b>7-9 Early French Immersion Program</b>  <b>7-9 Late French Immersion Program</b>	<b>7-9 Early French Immersion Program</b> <i>(Projected: 300-335)</i> <ul style="list-style-type: none"> <li>Rocky Ridge/Royal Oak, Tuscany communities move to Twelve Mile Coulee School</li> </ul> <b>7-9 Late French Immersion Program</b> <i>(Projected: 350-365)</i> <ul style="list-style-type: none"> <li>No change</li> </ul> <i>Total Projected: 650-700</i>	<b>6-9 Early French Immersion Program</b> <i>(Projected: 200-250)</i> <ul style="list-style-type: none"> <li>Grade 6 added from Banff Trail School</li> <li>Varsity Acres School students move to F.E. Osborne School</li> <li>Hamptons, Sherwood communities move to Valley Creek School</li> <li>Tuscany community moves to Twelve Mile Coulee School</li> </ul> <b>7-9 Late French Immersion Program</b> <i>(Projected: 325-350)</i> <ul style="list-style-type: none"> <li>Hamptons, Sherwood communities move to G.P. Vanier School</li> </ul> <i>Total Projected: 525-600</i>	<b>6-9 Early French Immersion Program</b> <i>(Projected: 350-400)</i> <ul style="list-style-type: none"> <li>Grade 6 added from Banff Trail School</li> <li>Hamptons, Sherwood communities move to Valley Creek School</li> <li>Rocky Ridge/Royal Oak, Tuscany, Varsity communities move to F.E. Osborne School</li> </ul> <b>7-9 Late French Immersion Program</b> <i>(Projected: 275-300)</i> <ul style="list-style-type: none"> <li>Hamptons, Sherwood communities move to G.P. Vanier School</li> <li>Rocky Ridge/Royal Oak, Tuscany, Varsity communities move to F.E. Osborne School</li> </ul> <i>Total Projected: 625-700</i>	<b>7-9 Early French Immersion Program</b> <i>(Projected: 375-425)</i> <ul style="list-style-type: none"> <li>No change</li> </ul> <b>7-9 Late French Immersion Program</b> <i>(Projected: 275-290)</i> <ul style="list-style-type: none"> <li>Hamptons, Nolan Hill, Sherwood communities move to Valley Creek School</li> <li>Grade 7 enrolment capped at 90-100</li> </ul> <i>Total Projected: 650-715</i>
	<b>F.E. Osborne School</b> Instructional Space: 735 2017 Enrolment: 420	<b>7-9 Regular Program</b>	<b>7-9 Regular Program</b> <i>(Projected: 400-460)</i> <ul style="list-style-type: none"> <li>No change</li> </ul>	<b>7-9 Regular Program</b> <i>(Projected: 400-460)</i> <ul style="list-style-type: none"> <li>No change</li> </ul> <b>7-9 Early French Immersion Program</b> <i>(Projected: 200-225)</i> <ul style="list-style-type: none"> <li>For students from new Varsity Acres School catchment area (incl. Evanston, Sage Hill communities)</li> </ul> <i>Total Projected: 600-685</i>	<b>7-9 Regular Program</b> <i>(Projected: 400-440)</i> <ul style="list-style-type: none"> <li>No change</li> </ul> <b>7-9 Early French Immersion Program</b> <i>(Projected: 160-190)</i> <ul style="list-style-type: none"> <li>For Rocky Ridge/Royal Oak, Tuscany and Varsity communities</li> </ul> <b>7-9 Late French Immersion Program</b> <i>(Projected: 80-100)</i> <ul style="list-style-type: none"> <li>For Rocky Ridge/Royal Oak, Tuscany and Varsity communities</li> </ul> <i>Total Projected: 640-730</i>	<b>7-9 Regular Program</b> <i>(Projected: 400-460)</i> <ul style="list-style-type: none"> <li>No change</li> </ul>
	<b>Georges P. (G.P.) Vanier School</b> Instructional Space: 590 2017 Enrolment: 370 <ul style="list-style-type: none"> <li>Early: 120</li> <li>Late: 100</li> <li>Regular Program: 150</li> </ul>	<b>7-9 Early French Immersion Program</b>  <b>7-9 Late French Immersion Program</b>  <b>7-9 Regular Program</b>	<b>5-9 Early French Immersion Program</b> <i>(Projected: 285-375)</i> <ul style="list-style-type: none"> <li>Grades 5 and 6 added from King George School</li> <li>Panorama community moves to Valley Creek School</li> </ul> <b>7-9 Late French Immersion Program</b> <i>(Projected: 110-115)</i> <ul style="list-style-type: none"> <li>No change</li> </ul> <b>7-9 Regular Program</b> <i>(Projected: 90-105)</i> <ul style="list-style-type: none"> <li>No change</li> </ul> <i>Total Projected: 485-595</i>	<b>6-9 Early French Immersion Program</b> <i>(Projected: 210-275)</i> <ul style="list-style-type: none"> <li>Grade 6 added from King George School</li> <li>Evanston, Sage Hill communities move to F.E. Osborne School</li> </ul> <b>7-9 Late French Immersion Program</b> <i>(Projected: 115-130)</i> <ul style="list-style-type: none"> <li>Hamptons, Sherwood communities added</li> </ul> <b>7-9 Regular Program</b> <i>(Projected: 90-105)</i> <ul style="list-style-type: none"> <li>No change</li> </ul> <i>Total Projected: 415-510</i>	<b>5-9 Early French Immersion Program (6-9 in 2021 and beyond)</b> <i>(Projected: 275-345)</i> <ul style="list-style-type: none"> <li>Grades 5 and 6 added from King George School (Grade 5 back to King George School in 2021 and beyond)</li> <li>Potential move (communities, school and grades TBD)</li> </ul> <b>7-9 Late French Immersion Program</b> <i>(Projected: 115-130)</i> <ul style="list-style-type: none"> <li>Hamptons, Sherwood communities added</li> </ul> <b>7-9 Regular Program</b> <i>(Projected: 90-105)</i> <ul style="list-style-type: none"> <li>No change</li> </ul> <i>Total Projected: 480-580</i>	<b>7-9 Early French Immersion Program</b> <i>(Projected: 165-220)</i> <ul style="list-style-type: none"> <li>No change</li> </ul> <b>7-9 Late French Immersion Program</b> <i>(Projected: 70-85)</i> <ul style="list-style-type: none"> <li>Communities east of Shaganappi Tr. N.W., north of Nose Hill Park and Berkshire Blvd. N.W. move to Valley Creek School</li> </ul> <b>7-9 Regular Program</b> <i>(Projected: 90-105)</i> <ul style="list-style-type: none"> <li>No change</li> </ul> <i>Total Projected: 325-410</i>
	<b>Twelve Mile Coulee School</b> Instructional Space: 885 2017 Enrolment: 840	<b>5-9 Regular Program</b>	<b>6-9 Regular Program</b> <i>(Projected: 600-650)</i> <ul style="list-style-type: none"> <li>Grade 5 at Tuscany and Eric Harvie schools</li> </ul> <b>7-9 Early French Immersion Program</b> <i>(Projected: 125-150)</i> <ul style="list-style-type: none"> <li>For Rocky Ridge/Royal Oak, Tuscany communities</li> </ul> <i>Total Projected: 725-800</i>	<b>6-9 Regular Program</b> <i>(Projected: 600-650)</i> <ul style="list-style-type: none"> <li>Grade 5 at Tuscany and Eric Harvie schools</li> </ul> <b>6-9 Early French Immersion Program</b> <i>(Projected: 85-105)</i> <ul style="list-style-type: none"> <li>For Tuscany community</li> </ul> <i>Total Projected: 685-755</i>	<b>6-9 Regular Program</b> <i>(Projected: 600-650)</i> <ul style="list-style-type: none"> <li>Grade 5 at Tuscany and Eric Harvie schools</li> </ul>	<b>5-9 Regular Program</b> <i>(Projected: 835-875)</i> <ul style="list-style-type: none"> <li>No change</li> </ul>
	<b>Valley Creek School</b> Instructional Space: 840 2017 Enrolment: 724 <ul style="list-style-type: none"> <li>Early: 216</li> <li>Regular Program: 508</li> </ul>	<b>4-9 Early French Immersion Program</b>  <b>4-9 Regular Program</b>	<b>4-9 Early French Immersion Program</b> <i>(Projected: 315-345)</i> <ul style="list-style-type: none"> <li>Grades 5-9 from Panorama community added</li> </ul> <b>4-9 Regular Program</b> <i>(Projected: 335-375)</i> <ul style="list-style-type: none"> <li>No change</li> </ul> <i>Total Projected: 650-720</i>	<b>4-9 Early French Immersion Program</b> <i>(Projected: 285-325)</i> <ul style="list-style-type: none"> <li>Hamptons, Sherwood communities added</li> </ul> <b>4-9 Regular Program</b> <i>(Projected: 335-375)</i> <ul style="list-style-type: none"> <li>No change</li> </ul> <i>Total Projected: 620-700</i>	<b>4-9 Early French Immersion Program</b> <i>(Projected: 285-325)</i> <ul style="list-style-type: none"> <li>Hamptons, Sherwood communities added</li> </ul> <b>4-9 Regular Program</b> <i>(Projected: 335-375)</i> <ul style="list-style-type: none"> <li>No change</li> </ul> <i>Total Projected: 620-700</i>	<b>4-9 Early French Immersion Program</b> <i>(Projected: 265-295)</i> <ul style="list-style-type: none"> <li>No change</li> </ul> <b>4-9 Regular Program</b> <i>(Projected: 335-375)</i> <ul style="list-style-type: none"> <li>No change</li> </ul> <b>7-9 Late French Immersion Program</b> <i>(Projected: 100-120)</i> <ul style="list-style-type: none"> <li>For Nolan Hill, Hamptons, Sherwood, and communities east of Shaganappi Tr. N.W., north of Nose Hill Park and Berkshire Blvd N.W.</li> <li>Grade 7 enrolment capped at 35-50</li> </ul> <i>Total Projected: 700-790</i>



## Early and Late French Immersion Programs in Northwest and North Central Calgary

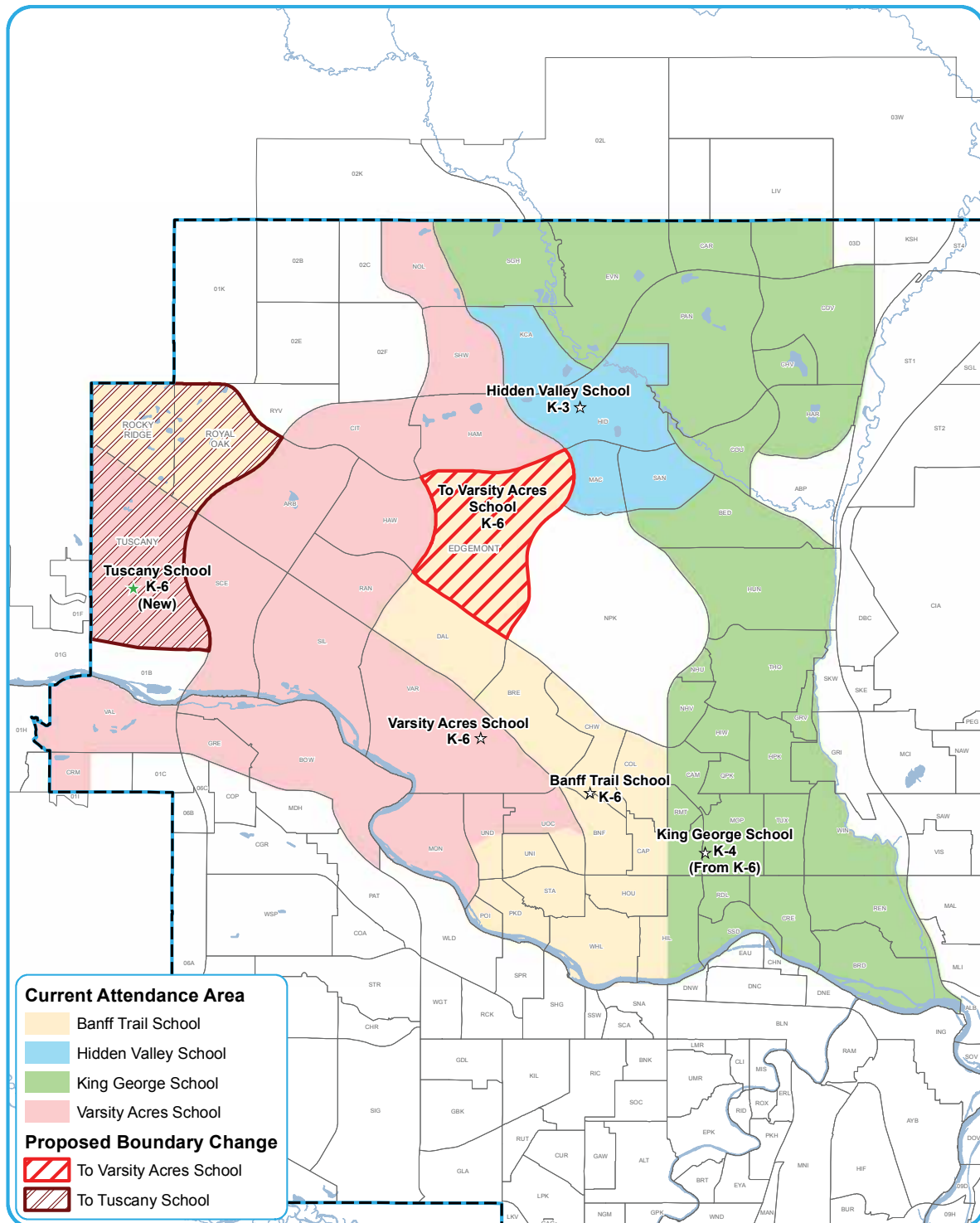
**Add two new locations, grade configuration change,  
small amount of boundary changes**

	School	Current	Scenario A
Elementary Schools	<b>Banff Trail School</b> Instructional Space: 450 2017 Enrolment: 454	K-6 Early French Immersion Program	<b>K-6 Early French Immersion Program</b> (Projected: 350-400) ■ Rocky Ridge/Royal Oak communities move to Tuscany School ■ Edgemont community moves to Varsity Acres School
	<b>Eric Harvie School</b> Instructional Space: 600 2017 Enrolment: 464	K-4 Regular Program	<b>K-5 Regular Program</b> (Projected: 500-575) ■ Grade 5 from the current catchment area added
	<b>Hidden Valley School</b> Instructional Space: 550 2017 Enrolment: 446 ■ Early: 242 ■ Regular Program: 204	K-3 Early French Immersion Program  K-3 Regular Program	<b>K-3 Early French Immersion Program</b> (Projected: 235-250) ■ No change  <b>K-3 Regular Program</b> (Projected: 190-205) ■ No change Total Projected: 425-455
	<b>King George School</b> Instructional Space: 650 2017 Enrolment: 607	K-6 Early French Immersion Program	<b>K-4 Early French Immersion Program</b> (Projected: 540-590) ■ Grades 5 and 6 move to G.P. Vanier School
	<b>Tuscany School</b> Instructional Space: 700 2017 Enrolment: 358	K-4 Regular Program	<b>K-5 Regular Program</b> (Projected: 300-330) ■ Grade 5 from the current catchment area added  <b>K-6 Early French Immersion Program</b> (Projected: 300-360) ■ For Rocky Ridge/Royal Oak, Tuscany communities Total Projected: 600-690
	<b>Varsity Acres School</b> Instructional Space: 625 2017 Enrolment: 563	K-6 Early French Immersion Program	<b>K-6 Early French Immersion Program</b> (Projected: 475-500) ■ Edgemont community added ■ Tuscany community moves to Tuscany School
Middle/Junior High Schools	<b>Branton School</b> Instructional Space: 835 2017 Enrolment: 718 ■ Early: 348 ■ Late: 370	7-9 Early French Immersion Program  7-9 Late French Immersion Program	<b>7-9 Early French Immersion Program</b> (Projected: 300-335) ■ Rocky Ridge/Royal Oak, Tuscany communities move to Twelve Mile Coulee School  <b>7-9 Late French Immersion Program</b> (Projected: 350-365) ■ No change Total Projected: 650-700
	<b>F.E. Osborne School</b> Instructional Space: 735 2017 Enrolment: 420	7-9 Regular Program	<b>7-9 Regular Program</b> (Projected: 400-460) ■ No change
	<b>Georges P. (G.P.) Vanier School</b> Instructional Space: 590 2017 Enrolment: 370 ■ Early: 120 ■ Late: 100 ■ Regular Program: 150	7-9 Early French Immersion Program  7-9 Late French Immersion Program  7-9 Regular Program	<b>5-9 Early French Immersion Program</b> (Projected: 285-375) ■ Grades 5 and 6 added from King George School ■ Panorama community moves to Valley Creek School  <b>7-9 Late French Immersion Program</b> (Projected: 110-115) ■ No change  <b>7-9 Regular Program</b> (Projected: 90-105) ■ No change Total Projected: 485-595
	<b>Twelve Mile Coulee School</b> Instructional Space: 885 2017 Enrolment: 840	5-9 Regular Program	<b>6-9 Regular Program</b> (Projected: 600-650) ■ Grade 5 at Tuscany and Eric Harvie schools  <b>7-9 Early French Immersion Program</b> (Projected: 125-150) ■ For Rocky Ridge/Royal Oak, Tuscany communities Total Projected: 725-800
	<b>Valley Creek School</b> Instructional Space: 840 2017 Enrolment: 724 ■ Early: 216 ■ Regular Program: 508	4-9 Early French Immersion Program  4-9 Regular Program	<b>4-9 Early French Immersion Program</b> (Projected: 315-345) ■ Grades 5-9 from Panorama community added  <b>4-9 Regular Program</b> (Projected: 335-375) ■ No change Total Projected: 650-720

Projected = Highest projected enrolment range for 2019-22



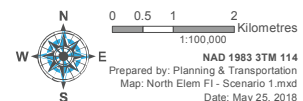
## Proposed Elementary Early French Immersion Program Boundaries



### School

- ★ Proposed French Immersion
- ☆ Currently Offers French Immersion
- CBE Boundary

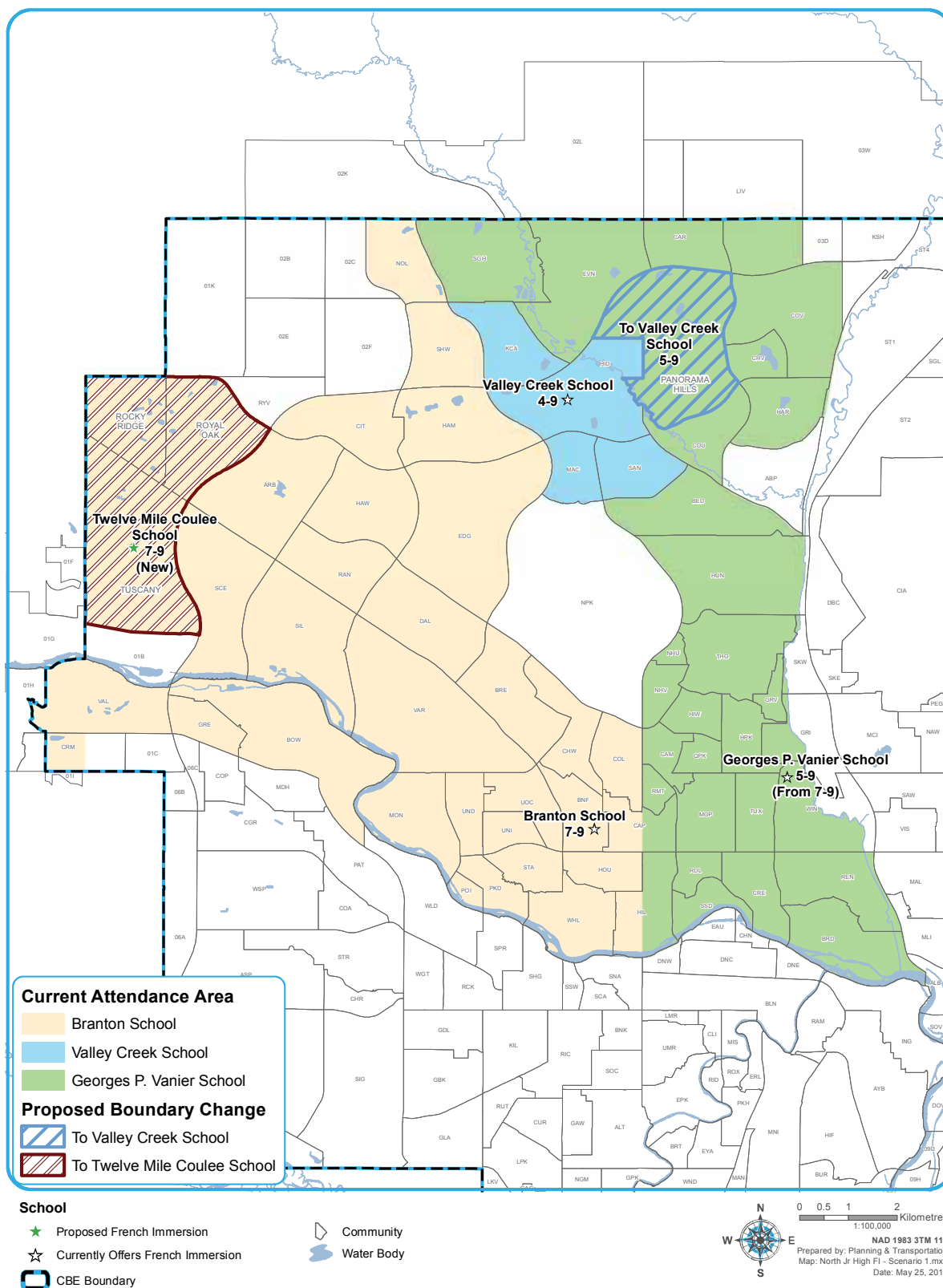
- Community
- Water Body





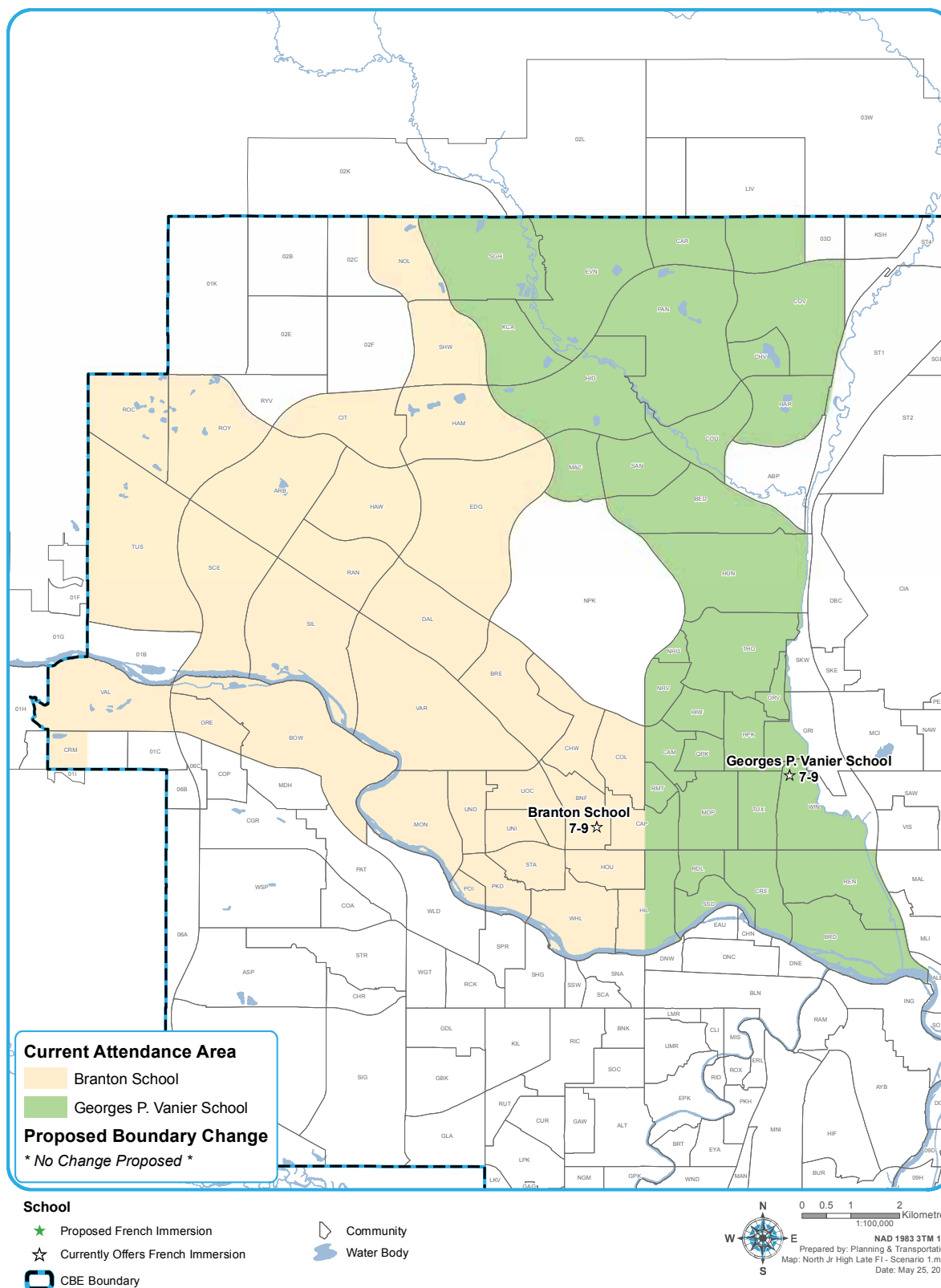


## Proposed Middle/Junior High Early French Immersion Program Boundaries





## Proposed Junior High Late French Immersion Program Boundaries





## Early and Late French Immersion Programs in Northwest and North Central Calgary

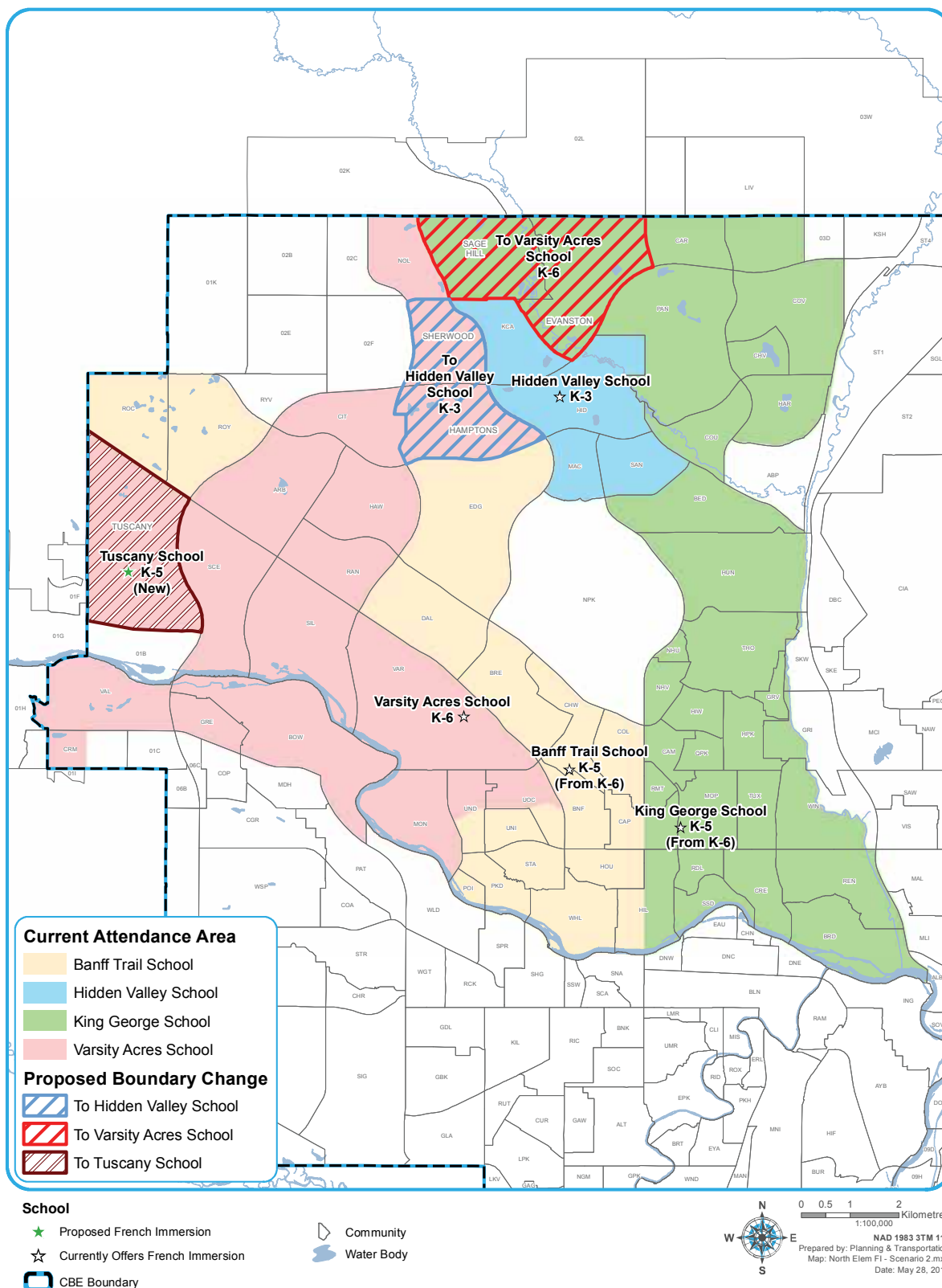
### Add three new locations, several grade configuration changes, boundary changes

	School	Current	Scenario B
Elementary Schools	<b>Banff Trail School</b> Instructional Space: 450 2017 Enrolment: 454	K-6 Early French Immersion Program	<b>K-5 Early French Immersion Program</b> (Projected: 400-450) ■ Grade 6 moves to Branton School
	<b>Eric Harvie School</b> Instructional Space: 600 2017 Enrolment: 464	K-4 Regular Program	<b>K-5 Regular Program</b> (Projected: 500-575) ■ Grade 5 from the current catchment area added
	<b>Hidden Valley School</b> Instructional Space: 550 2017 Enrolment: 446 ■ Early: 242 ■ Regular Program: 204	K-3 Early French Immersion Program  K-3 Regular Program	<b>K-3 Early French Immersion Program</b> (Projected: 260-285) ■ Hamptons, Sherwood communities added <b>K-3 Regular Program</b> (Projected: 190-205) ■ No change Total Projected: 450-490
	<b>King George School</b> Instructional Space: 650 2017 Enrolment: 607	K-6 Early French Immersion Program	<b>K-5 Early French Immersion Program</b> (Projected: 560-610) ■ Grade 6 moves to G.P. Vanier School ■ Evanston, Sage Hill communities move to Varsity Acres School
	<b>Tuscany School</b> Instructional Space: 700 2017 Enrolment: 358	K-4 Regular Program	<b>K-5 Regular Program</b> (Projected: 300-330) ■ Grade 5 from the current catchment area added <b>K-5 Early French Immersion Program</b> (Projected: 150-190) ■ For Tuscany community Total Projected: 450-520
	<b>Varsity Acres School</b> Instructional Space: 625 2017 Enrolment: 563	K-6 Early French Immersion Program	<b>K-6 Early French Immersion Program</b> (Projected: 475-550) ■ Evanston, Sage Hill communities added ■ Tuscany community - K-5 move to Tuscany School, Grade 6 moves to Twelve Mile Coulee School ■ Hamptons, Sherwood communities - K-3 move to Hidden Valley School, Grades 4-6 move to Valley Creek School
Middle/Junior High Schools	<b>Branton School</b> Instructional Space: 835 2017 Enrolment: 718 ■ Early: 348 ■ Late: 370	7-9 Early French Immersion Program  7-9 Late French Immersion Program	<b>6-9 Early French Immersion Program</b> (Projected: 200-250) ■ Grade 6 added from Banff Trail School ■ Varsity Acres School students move to F.E. Osborne School ■ Hamptons, Sherwood communities move to Valley Creek School ■ Tuscany community moves to Twelve Mile Coulee School <b>7-9 Late French Immersion Program</b> (Projected: 325-350) ■ Hamptons, Sherwood communities move to G.P. Vanier School Total Projected: 525-600
	<b>F.E. Osborne School</b> Instructional Space: 735 2017 Enrolment: 420	7-9 Regular Program	<b>7-9 Regular Program</b> (Projected: 400-460) ■ No change <b>7-9 Early French Immersion Program</b> (Projected: 200-225) ■ For students from new Varsity Acres School catchment area (incl. Evanston, Sage Hill communities) Total Projected: 600-685
	<b>Georges P. (G.P.) Vanier School</b> Instructional Space: 590 2017 Enrolment: 370 ■ Early: 120 ■ Late: 100 ■ Regular Program: 150	7-9 Early French Immersion Program  7-9 Late French Immersion Program  7-9 Regular Program	<b>6-9 Early French Immersion Program</b> (Projected: 210-275) ■ Grade 6 added from King George School ■ Evanston, Sage Hill communities move to F.E. Osborne School <b>7-9 Late French Immersion Program</b> (Projected: 115-130) ■ Hamptons, Sherwood communities added <b>7-9 Regular Program</b> (Projected: 90-105) ■ No change Total Projected: 415-510
	<b>Twelve Mile Coulee School</b> Instructional Space: 885 2017 Enrolment: 840	5-9 Regular Program	<b>6-9 Regular Program</b> (Projected: 600-650) ■ Grade 5 at Tuscany and Eric Harvie schools <b>6-9 Early French Immersion Program</b> (Projected: 85-105) ■ For Tuscany community Total Projected: 685-755
	<b>Valley Creek School</b> Instructional Space: 840 2017 Enrolment: 724 ■ Early: 216 ■ Regular Program: 508	4-9 Early French Immersion Program  4-9 Regular Program	<b>4-9 Early French Immersion Program</b> (Projected: 285-325) ■ Hamptons, Sherwood communities added <b>4-9 Regular Program</b> (Projected: 335-375) ■ No change Total Projected: 620-700

Projected = Highest projected enrolment range for 2019-22

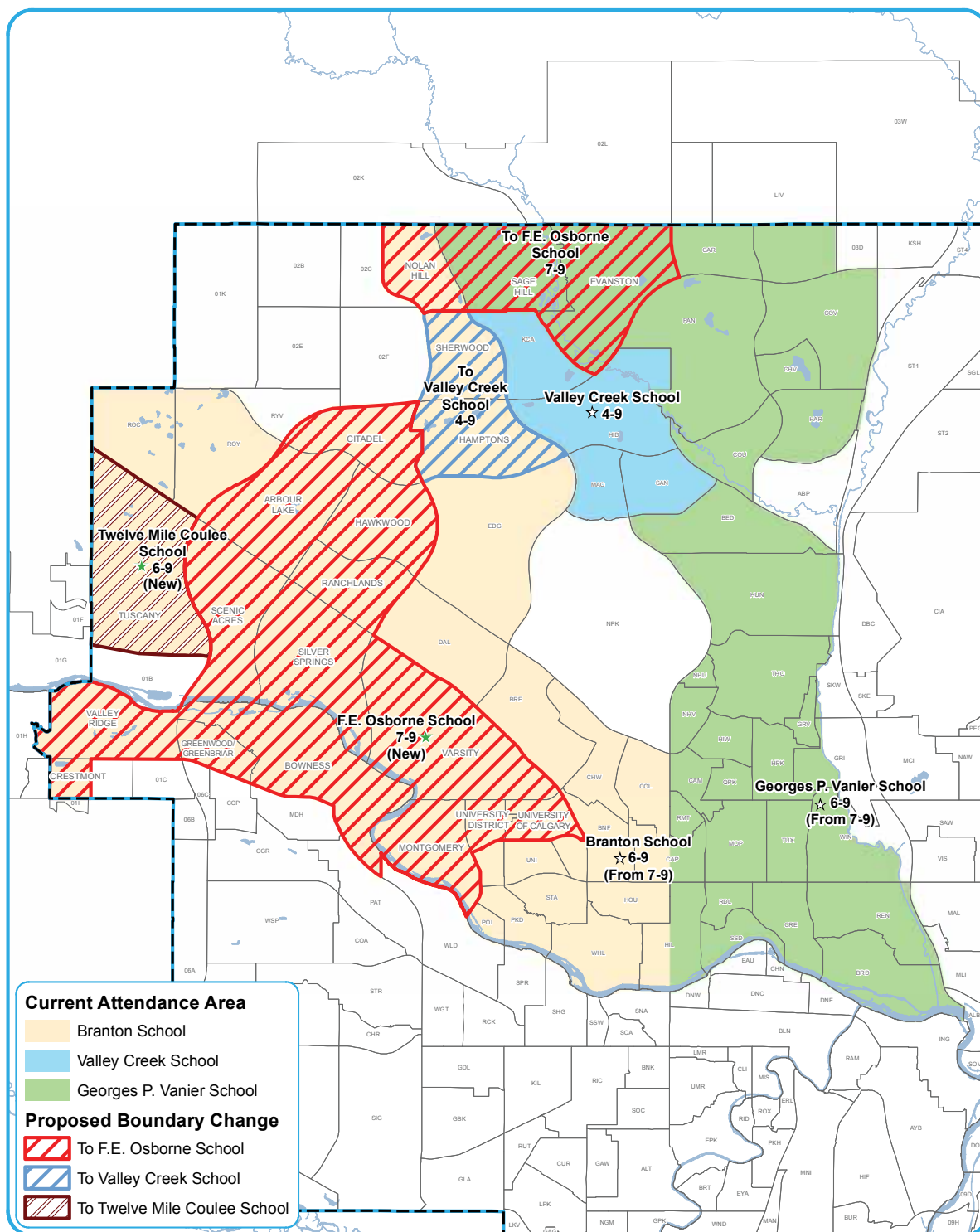


## Proposed Elementary Early French Immersion Program Boundaries



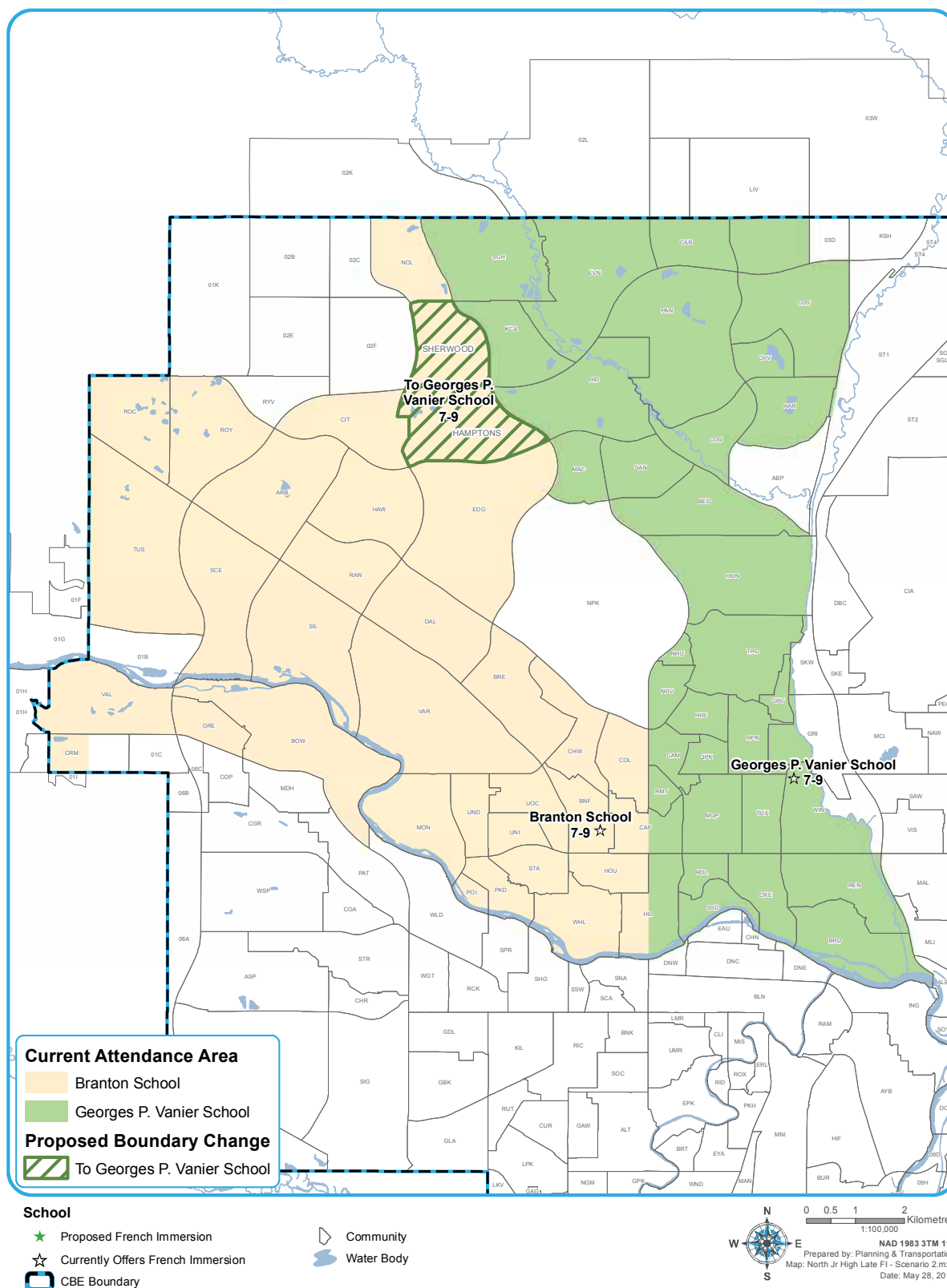


## Proposed Middle/Junior High Early French Immersion Program Boundaries





## Proposed Junior High Late French Immersion Program Boundaries





## Early and Late French Immersion Programs in Northwest and North Central Calgary

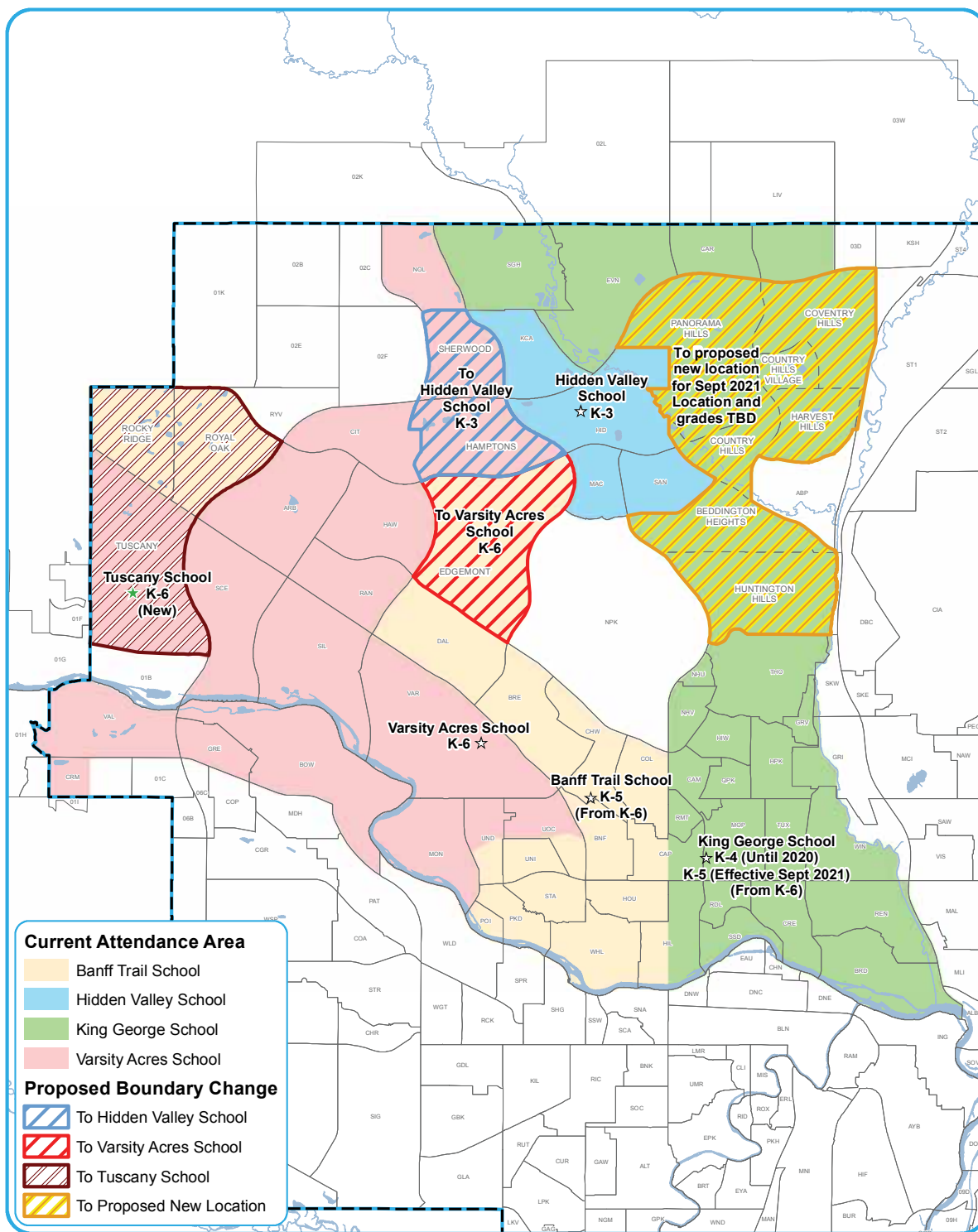
**Add three new locations (two in 2019, one in 2021)  
several grade configuration changes, boundary changes**

	School	Current	Scenario C
Elementary Schools	<b>Banff Trail School</b> Instructional Space: 450 2017 Enrolment: 454	K-6 Early French Immersion Program	<b>K-5 Early French Immersion Program</b> (Projected: 325-375) ③Grade 6 moves to Branton School ③Rocky Ridge/Royal Oak communities move to Tuscany School ③Edgemont community moves to Varsity Acres School
	<b>Eric Harvie School</b> Instructional Space: 600 2017 Enrolment: 464	K-4 Regular Program	<b>K-5 Regular Program</b> (Projected: 500-575) ③Grade 5 from the current catchment area added
	<b>Hidden Valley School</b> Instructional Space: 550 2017 Enrolment: 446 ③Early: 242 ③Regular Program: 204	K-3 Early French Immersion Program  K-3 Regular Program	<b>K-3 Early French Immersion Program</b> (Projected: 260-285) ③Hamptons, Sherwood communities added  <b>K-3 Regular Program</b> (Projected: 190-205) ③No change Total Projected: 450-490
	<b>King George School</b> Instructional Space: 650 2017 Enrolment: 607	K-6 Early French Immersion Program	<b>K-4 Early French Immersion Program (2019-20)</b> (Projected: 500-560) ③Grades 5 and 6 move to G.P. Vanier School  <b>K-5 Early French Immersion Program (2021 and beyond)</b> ③Grade 5 added from G.P. Vanier School ③Potential move (communities, school and grades TBD)
	<b>Tuscany School</b> Instructional Space: 700 2017 Enrolment: 358	K-4 Regular Program	<b>K-5 Regular Program</b> (Projected: 300-330) ③Grade 5 from the current catchment area added  <b>K-6 Early French Immersion Program</b> (Projected: 300-360) ③For Rocky Ridge/Royal Oak, Tuscany communities Total Projected: 600-690
	<b>Varsity Acres School</b> Instructional Space: 625 2017 Enrolment: 563	K-6 Early French Immersion Program	<b>K-6 Early French Immersion Program</b> (Projected: 465-500) ③Edgemont community added ③Tuscany community moves to Tuscany School ③Hamptons, Sherwood communities - K-3 move to Hidden Valley School, Grades 4-6 move to Valley Creek School
Middle/Junior High Schools	<b>Branton School</b> Instructional Space: 835 2017 Enrolment: 718 ③Early: 348 ③Late: 370	7-9 Early French Immersion Program  7-9 Late French Immersion Program	<b>6-9 Early French Immersion Program</b> (Projected: 350-400) ③Grade 6 added from Banff Trail School ③Hamptons, Sherwood communities move to Valley Creek School ③Rocky Ridge/Royal Oak, Tuscany, Varsity communities move to F.E. Osborne School  <b>7-9 Late French Immersion Program</b> (Projected: 275-300) ③Hamptons, Sherwood communities move to G.P. Vanier School ③Rocky Ridge/Royal Oak, Tuscany, Varsity communities move to F.E. Osborne School Total Projected: 625-700
	<b>F.E. Osborne School</b> Instructional Space: 735 2017 Enrolment: 420	7-9 Regular Program	<b>7-9 Regular Program</b> (Projected: 400-440) ③ No change  <b>7-9 Early French Immersion Program</b> (Projected: 160-190) ③For Rocky Ridge/Royal Oak, Tuscany and Varsity communities  <b>7-9 Late French Immersion Program</b> (Projected: 80-100) ③For Rocky Ridge/Royal Oak, Tuscany and Varsity communities Total Projected: 640-730
	<b>Georges P. (G.P.) Vanier School</b> Instructional Space: 590 2017 Enrolment: 370 ③Early: 120 ③Late: 100 ③Regular Program: 150	7-9 Early French Immersion Program  7-9 Late French Immersion Program  7-9 Regular Program	<b>5-9 Early French Immersion Program (6-9 in 2021 and beyond)</b> (Projected: 275-345) ③Grades 5 and 6 added from King George School (Grade 5 back to King George School in 2021 and beyond) ③Potential move (communities, school and grades TBD)  <b>7-9 Late French Immersion Program</b> (Projected: 115-130) ③Hamptons, Sherwood communities added  <b>7-9 Regular Program</b> (Projected: 90-105) ③ No change Total Projected: 480-580
	<b>Twelve Mile Coulee School</b> Instructional Space: 885 2017 Enrolment: 840	5-9 Regular Program	<b>6-9 Regular Program</b> (Projected: 600-650) ③ Grade 5 at Tuscany and Eric Harvie schools
	<b>Valley Creek School</b> Instructional Space: 840 2017 Enrolment: 724 ③Early: 216 ③Regular Program: 508	4-9 Early French Immersion Program  4-9 Regular Program	<b>4-9 Early French Immersion Program</b> (Projected: 285-325) ③Hamptons, Sherwood communities added  <b>4-9 Regular Program</b> (Projected: 335-375) ③ No change Total Projected: 620-700

Projected = Highest projected enrolment range for 2019-22



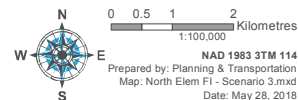
## Proposed Elementary Early French Immersion Program Boundaries



### School

- ★ Proposed French Immersion
- ☆ Currently Offers French Immersion
- CBE Boundary

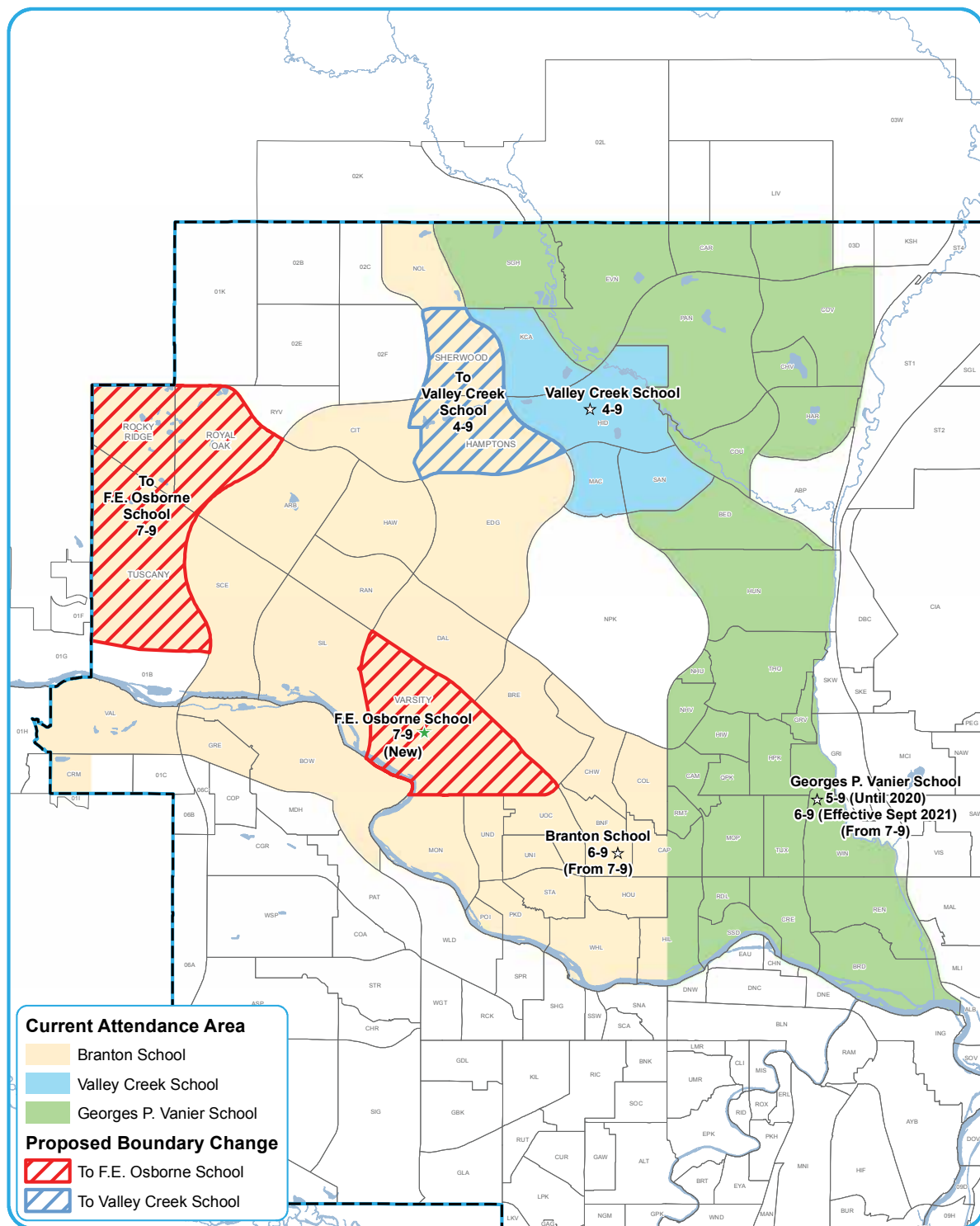
- Community
- Water Body







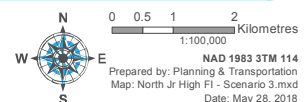
## Proposed Middle/Junior High Early French Immersion Program Boundaries



### School

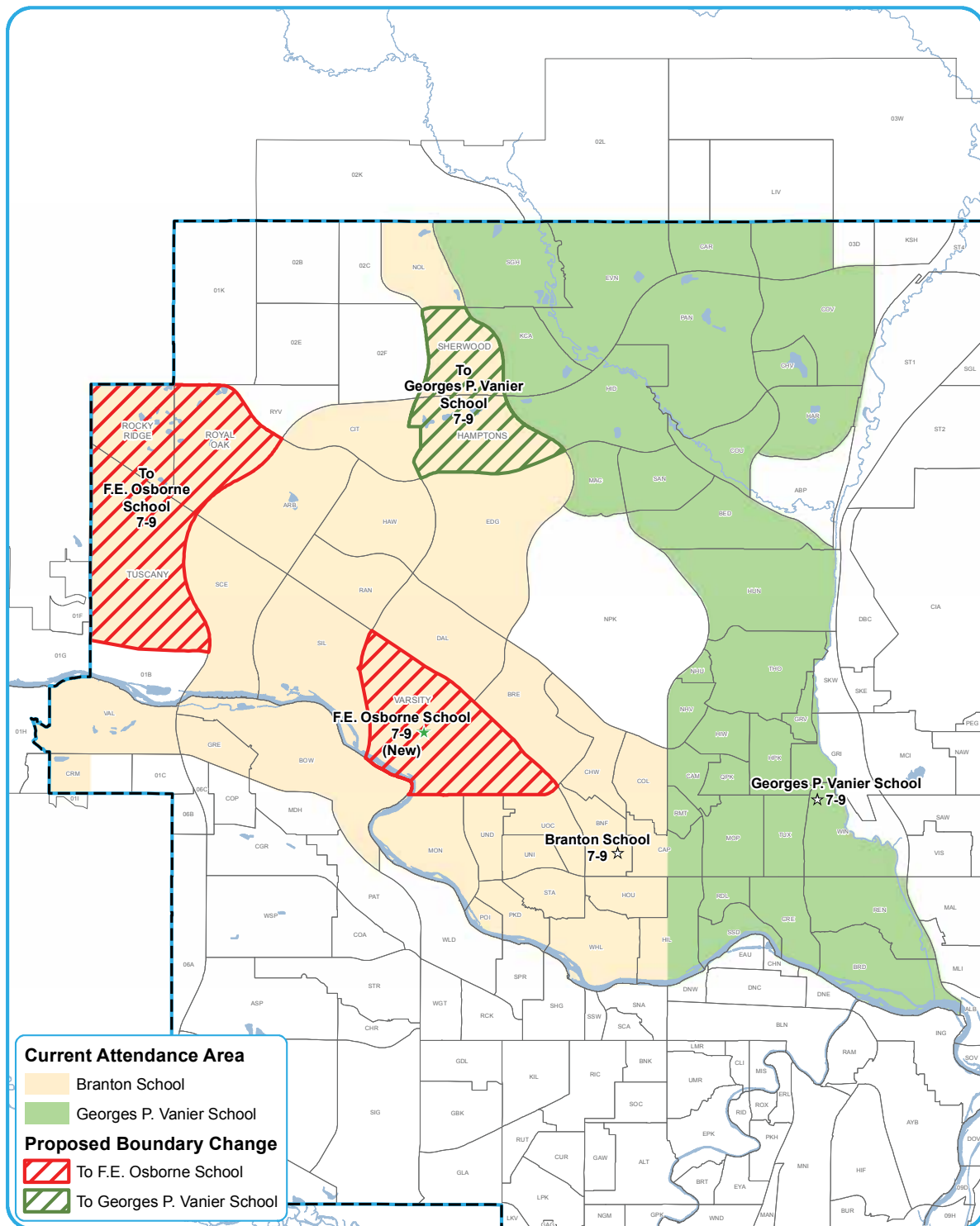
- ★ Proposed French Immersion
- ☆ Currently Offers French Immersion
- CBE Boundary

- Community
- Water Body





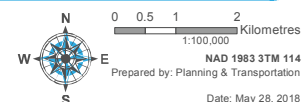
## Proposed Junior High Late French Immersion Program Boundaries



### School

- ★ Proposed French Immersion
- ☆ Currently Offers French Immersion
- CBE Boundary

- Community
- Water Body





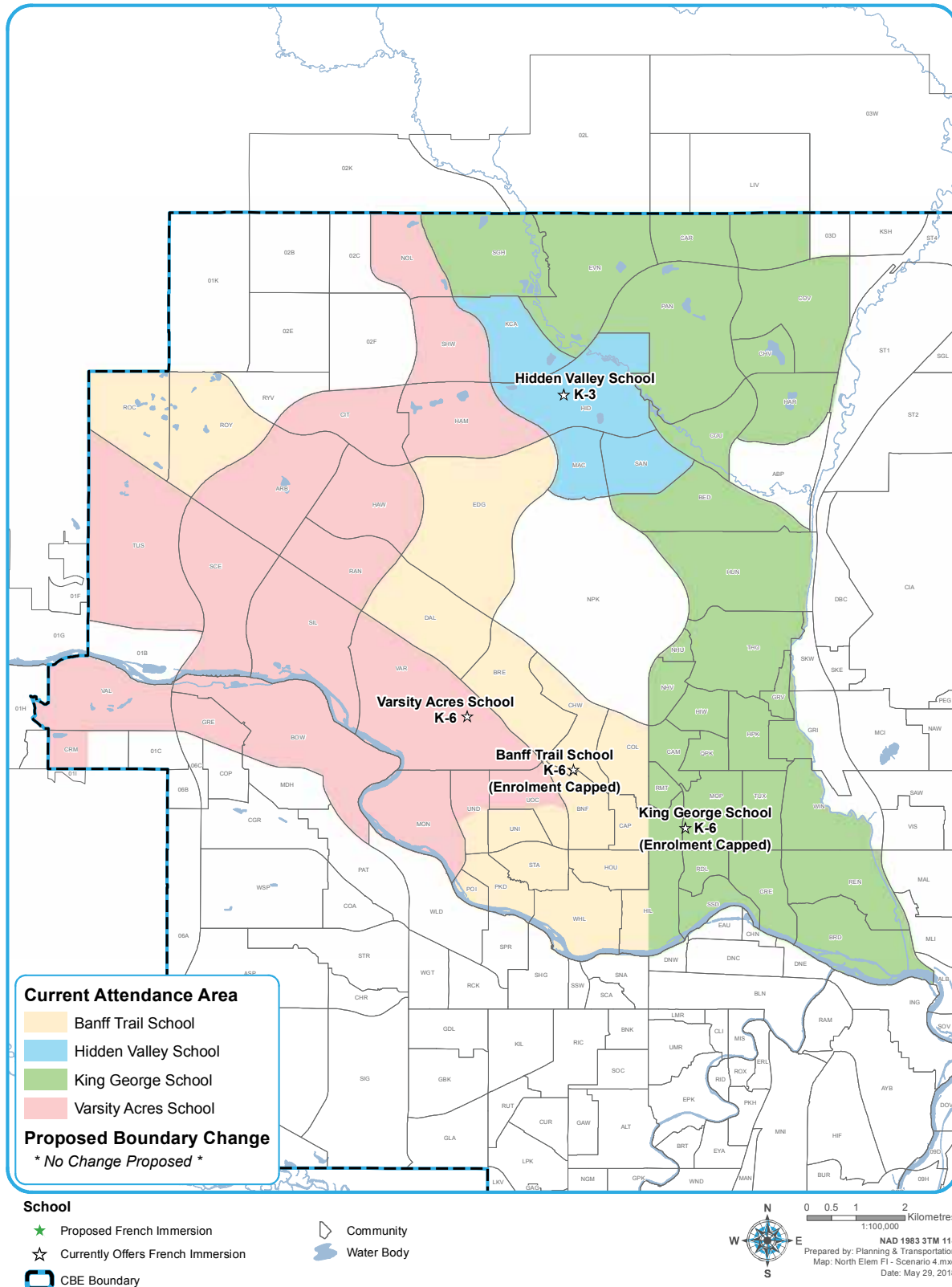
## Early and Late French Immersion Programs in Northwest and North Central Calgary

### Cap enrolment at some schools, add a Late French Immersion Program location

	School	Current	Scenario D
Elementary Schools	<b>Banff Trail School</b> Instructional Space: 450 2017 Enrolment: 454	K-6 Early French Immersion Program	<b>K-6 Early French Immersion Program</b> (Projected: 425-450) ■ Kindergarten and Grade 1 enrolment capped at 50-75 per grade
	<b>Eric Harvie School</b> Instructional Space: 600 2017 Enrolment: 464	K-4 Regular Program	<b>K-4 Regular Program</b> (Projected: 420-480) ■ No change
	<b>Hidden Valley School</b> Instructional Space: 550 2017 Enrolment: 446 ■ Early: 242 ■ Regular Program: 204	K-3 Early French Immersion Program  K-3 Regular Program	<b>K-3 Early French Immersion Program</b> (Projected: 235-250) ■ No change  <b>K-3 Regular Program</b> (Projected: 190-205) ■ No change Total Projected: 425-455
	<b>King George School</b> Instructional Space: 650 2017 Enrolment: 607	K-6 Early French Immersion Program	<b>K-6 Early French Immersion Program</b> (Projected: 575-625) ■ Kindergarten and Grade 1 enrolment capped at 75-100 per grade
	<b>Tuscany School</b> Instructional Space: 700 2017 Enrolment: 358	K-4 Regular Program	<b>K-4 Regular Program</b> (Projected: 250-300) ■ No change
	<b>Varsity Acres School</b> Instructional Space: 625 2017 Enrolment: 563	K-6 Early French Immersion Program	<b>K-6 Early French Immersion Program</b> (Projected: 525-575) ■ No change
Middle/Junior High Schools	<b>Branton School</b> Instructional Space: 835 2017 Enrolment: 718 ■ Early: 348 ■ Late: 370	7-9 Early French Immersion Program  7-9 Late French Immersion Program	<b>7-9 Early French Immersion Program</b> (Projected: 375-425) ■ No change  <b>7-9 Late French Immersion Program</b> (Projected: 275-290) ■ Hamptons, Nolan Hill, Sherwood communities move to Valley Creek School ■ Grade 7 enrolment capped at 90-100 Total Projected: 650-715
	<b>F.E. Osborne School</b> Instructional Space: 735 2017 Enrolment: 420	7-9 Regular Program	<b>7-9 Regular Program</b> (Projected: 400-460) ■ No change
	<b>Georges P. (G.P.) Vanier School</b> Instructional Space: 590 2017 Enrolment: 370 ■ Early: 120 ■ Late: 100 ■ Regular Program: 150	7-9 Early French Immersion Program  7-9 Late French Immersion Program  7-9 Regular Program	<b>7-9 Early French Immersion Program</b> (Projected: 165-220) ■ No change  <b>7-9 Late French Immersion Program</b> (Projected: 70-85) ■ Communities east of Shaganappi Tr. N.W., north of Nose Hill Park and Berkshire Blvd. N.W. move to Valley Creek School  <b>7-9 Regular Program</b> (Projected: 90-105) ■ No change Total Projected: 325-410
	<b>Twelve Mile Coulee School</b> Instructional Space: 885 2017 Enrolment: 840	5-9 Regular Program	<b>5-9 Regular Program</b> (Projected: 835-875) ■ No change
	<b>Valley Creek School</b> Instructional Space: 840 2017 Enrolment: 724 ■ Early: 216 ■ Regular Program: 508	4-9 Early French Immersion Program  4-9 Regular Program	<b>4-9 Early French Immersion Program</b> (Projected: 265-295) ■ No change  <b>4-9 Regular Program</b> (Projected: 335-375) ■ No change  <b>7-9 Late French Immersion Program</b> (Projected: 100-120) ■ For Nolan Hill, Hamptons, Sherwood, and communities east of Shaganappi Tr. N.W., north of Nose Hill Park and Berkshire Blvd N.W. ■ Grade 7 enrolment capped at 35-50 Total Projected: 700-790



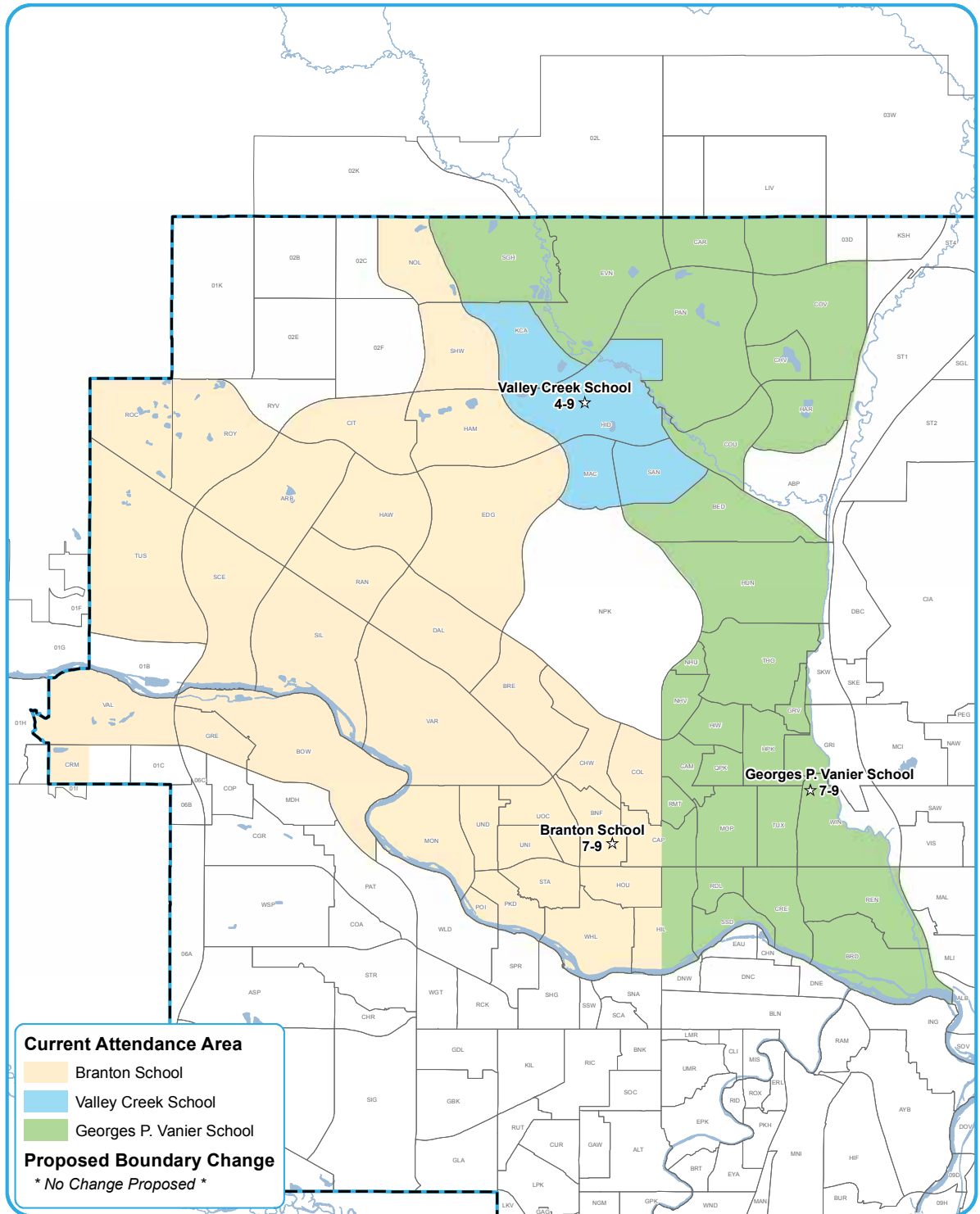
## Proposed Elementary Early French Immersion Program Boundaries





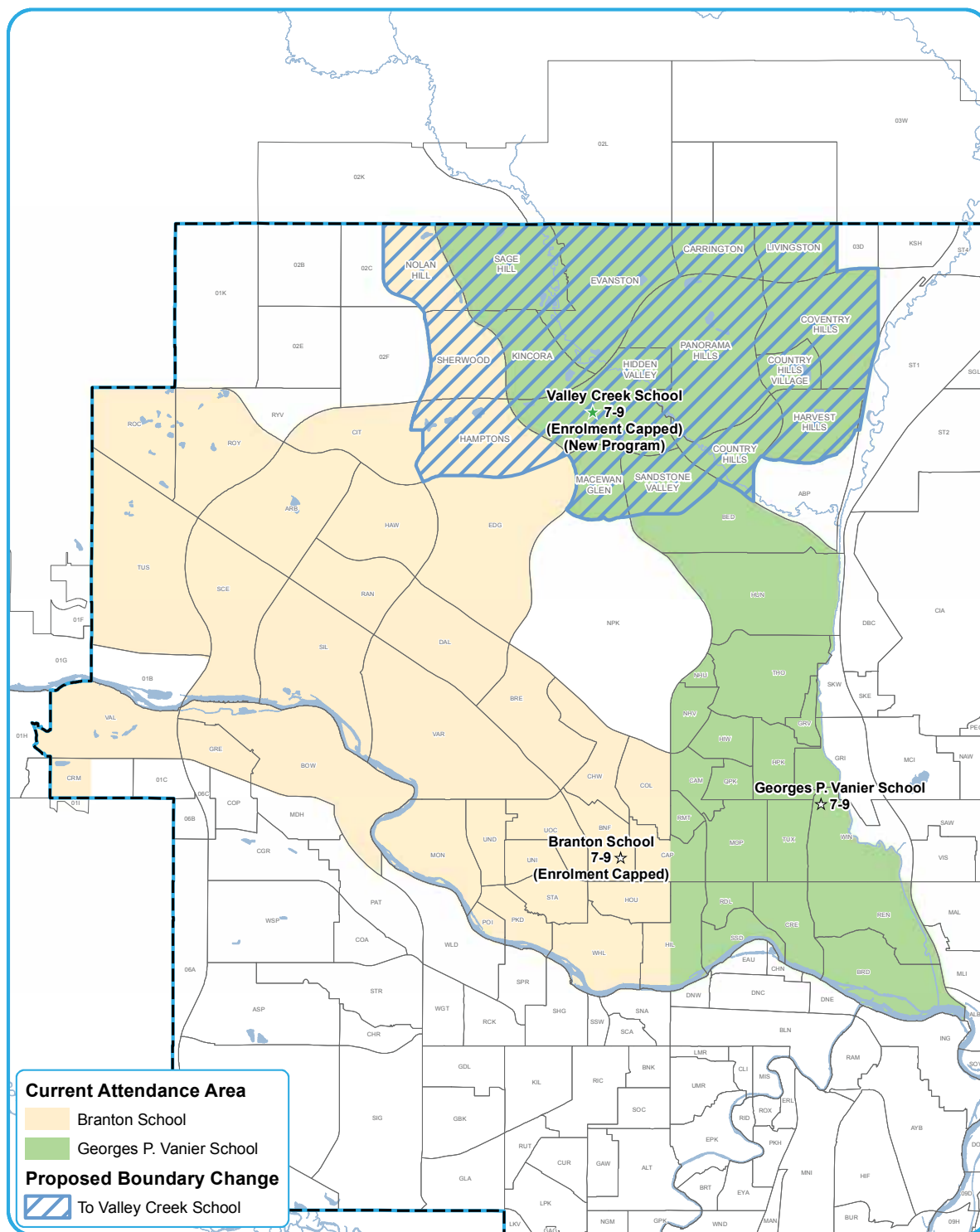


## Proposed Middle/Junior High Early French Immersion Program Boundaries





## Proposed Junior High Late French Immersion Program Boundaries



### School

- ★ Proposed French Immersion
- ☆ Currently Offers French Immersion
- CBE Boundary

- Community
- Water Body

