

Skyview Ranch K-9 School

**Presented by Calgary Board of Education
and Alberta Infrastructure**

for

Skyview Community Association

May 14, 2019



**Calgary Board
of Education**

Alberta 

Presentation Agenda

- Introductions
- Project Partners & Responsibilities
- Project Overview & Details on the Site
- Design Considerations
- School Programming
- Q&A

Project Partners



Project Partners



- Government Approval & Funding
- High Level Scope



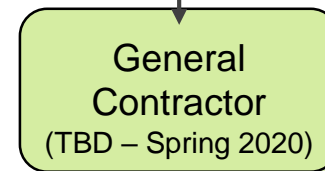
- Programming
- Community Engagement & Public Communications
- Final Fit-Out & Move-In



- Project Management Services
- Keep Project on Scope, Schedule and Budget
- Meet GOA Technical Specifications for Schools



- School Building Design and Construction Specifications
- City of Calgary Permits, LEED Silver Accreditation
- Consultant team Includes: Mechanical, Electrical, Structural, Acoustic, Geotechnical, and Civil Engineers. LEED, Radon, Landscaping Specialists.
- Additional specialists include: Solar, Site Investigation, Traffic consultants as well as Material Testing, Structural, and Roofing inspectors.



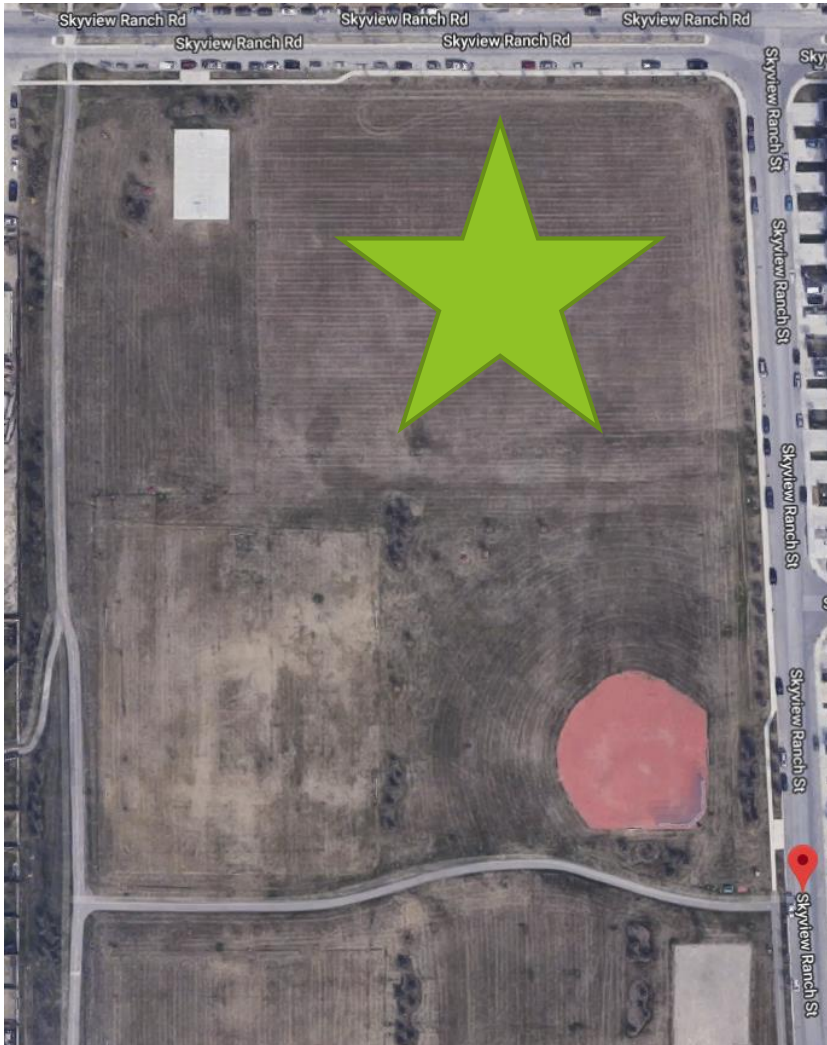
- Building Construction & Landscaping
- Trade Coordination
- Health and Safety

Project Overview

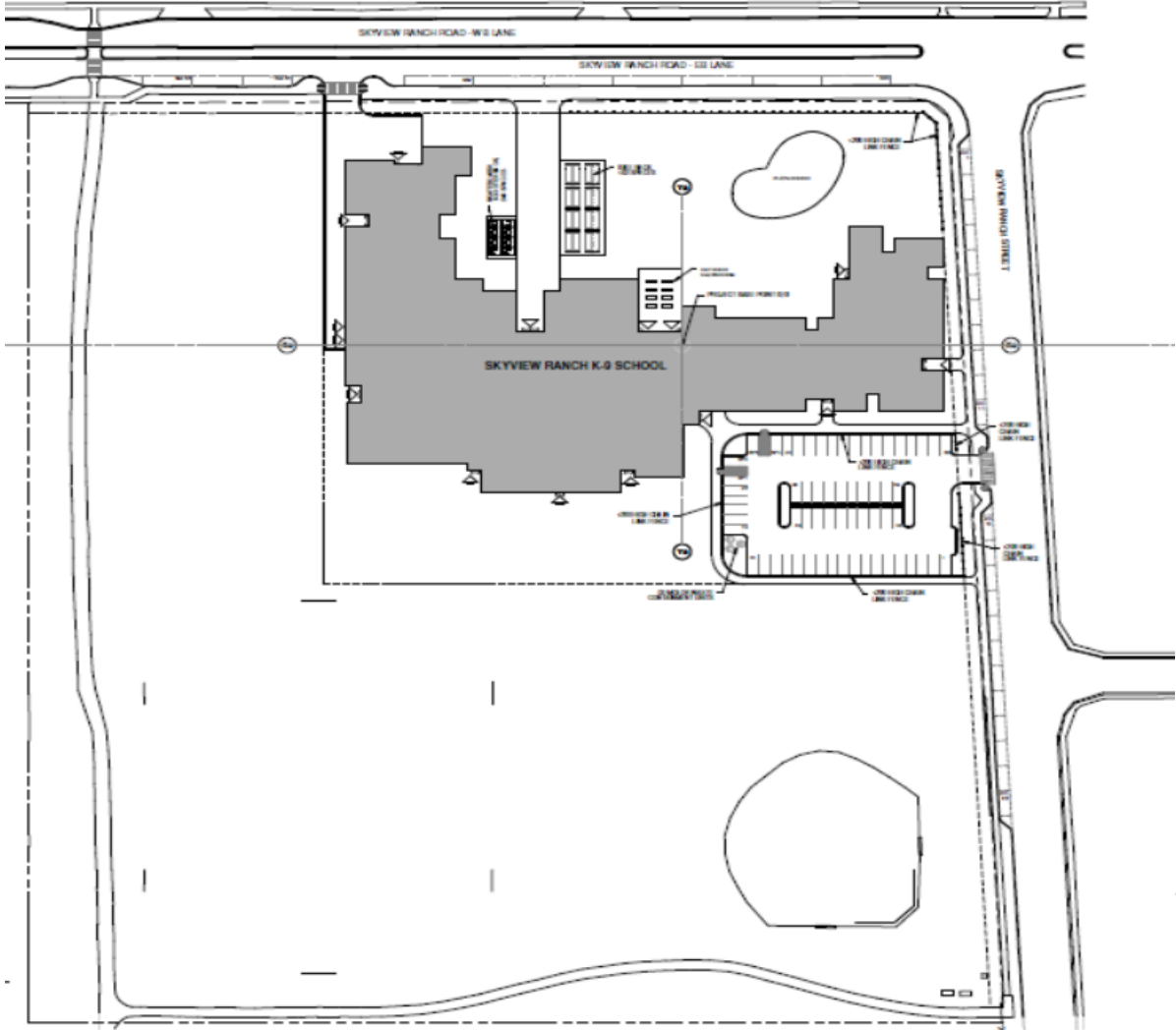
- 201 Skyview Ranch Road NE
- K-9
- Build out capacity of 900 students
- Total permanent space of 7,587 m² with no modular classrooms
- Project is approved for design and construction
- Estimated building construction budget is \$22.5M
- Project must achieve LEED Silver Certification and includes roof mounted solar panels.
- Target Opening Fall 2021

Project Details - Location

Skyview Ranch Road NE and Skyview Ranch Street



Project Details - Site



Design Considerations

- Site located at the corner of Skyview Ranch Road and Skyview Ranch Street
- Maintain existing baseball and basketball fields intact
- 2 Storey building
- Separate staff parking, bus drop off and parent drop off areas
- Separate play spaces for K-5 and 6-9 students
- Proposed outdoor classroom
- Additional basketball court next to the existing court

CBE Programming Overview

- Welcoming front entry into central school “hub” with large gathering space, learning commons, main and ancillary gymnasium, band, multi-purpose/maker space and administration
- Community after-hours access into gymnasium from school parking lot
- “Classroom pod” concept – grade clustering to create smaller groupings within school

CBE Programming Overview

- Shared common spaces between classrooms including flexible science/wet labs, break out rooms, and collaboration spaces for students outside of classrooms
- K-5 classes clustered over two floors, with separate kindergarten area near school hub, and a dedicated music room for younger grades
- Grade 6-9 classes located on main floor, nearer specialized classes
- STEAM wing featuring science, construction, art, computer lab, foods and fashion, and future maker space

ANY
QUESTIONS?

