

**report to  
Board of Trustees**

**2026-27 Modular Classroom Program**

Date	October 14, 2025
Meeting Type	Regular Meeting, Public Agenda
To	Board of Trustees
From	Joanne Pitman Chief Superintendent of Schools
Purpose	Decision
Originator	Dany Breton, Superintendent, Facilities and Environmental Services
Governance Policy Reference	Operational Expectations OE-7: Communication With and Support for the Board OE-9: Facilities
Resource Person(s)	Catherine Ford, Director Planning Jeff Quigley, Manager, Planning Trevor Fenton, Director, Facility Projects

**1 | Recommendation**

---

It is recommended:

THAT the Board of Trustees approves the 2026-27 Modular Classroom Program submission.

**2 | Issue**

---

The provincial government requires a prioritized list of modular classroom requests from all school boards annually.

### 3 | Background

---

Modular classrooms can make an important contribution to bettering the student learning experience by relieving accommodation pressures within a school. On October 29, 2024, revised Eligibility Filters for Modular Classrooms (Attachment I) and the Modular Classroom Ranking Criteria (Attachment II) were approved by the Board of Trustees. The modular classroom submission within this report was formulated using these updated filters and criteria.

On April 17, 2025, the province approved eight new modular classrooms and the disposition of one modular classroom. On July 9, 2025, the province provided an in-year approval for an additional 13 new modular classrooms, for a total of 21 new modular classrooms and one disposition. These approvals were based on the CBE's 2025-26 Modular Classroom Program request for 64 new units and one disposition.

The pressure on the CBE system caused by continued exceptional enrolment growth over the previous four years is a key consideration in this year's submission. This pressure is further compounded by the fact that only one new school is currently under construction. While an additional 14 new schools have received capital approval, it typically takes three to four years for a new school to open after being approved.

### 4 | Analysis

---

The analysis below recommends the following submission for the 2026-27 Modular Classroom Program (MCP):

- 64 new modular unit requests (increasing the capacity of 15 schools).

#### **Modular Classroom Additions – Eligible Schools**

A Modular Classroom Eligibility Filter Review was conducted using 2025 five-year enrolment projection data. From this, a list of all schools projected to be over 90% utilization within a three-year time frame (2027-29) was assembled (Attachment III).

30 schools had a projected utilization of 90% or higher and met the filter criteria to be eligible for points ranking analysis. As noted on page 6, 15 of these schools are not considered appropriate for modular classrooms at this time. The following 15 schools are recommended for modular classrooms and are listed in alphabetical order below, prior to ranking:

- Annie Foote School
- Chief Justice Milvain School
- David Thompson School
- Ernest Manning High School
- Georges P. Vanier School
- Lester B. Pearson High School
- Manmeet Singh Bhullar School
- Marlborough School
- Marshall Springs School
- McKenzie Lake School

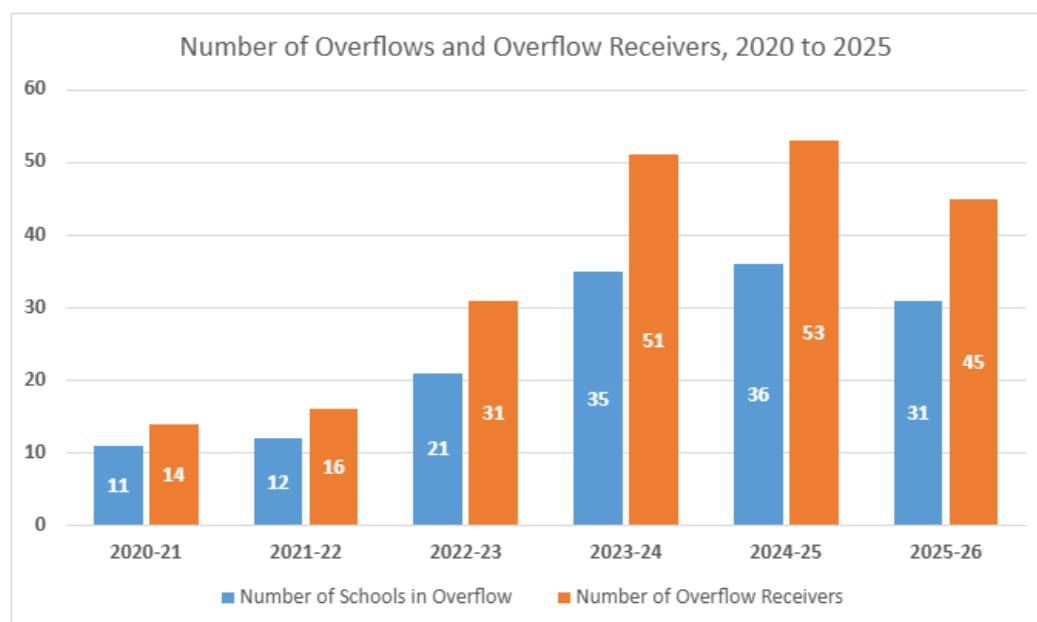
- Mountain Park School
- Prince Of Wales School
- Ron Southern School
- Sibylla Kiddle School
- Windsor Park School

The Modular Classroom Points Assignment (Attachment IV) summarizes the points assignments for the schools listed above.

Several factors that affect the viability and cost of modular unit classrooms were considered in conjunction with the points assignment to arrive at the list of schools recommended for additional modular classrooms (new or relocated units). Considerations include:

- Firefighting access to the proposed location;
- Access to existing garbage enclosures and parking areas;
- Access for modular delivery;
- Buffer zone(s) to existing City or CBE playfields; and
- The presence of connection corridors used to tie new modular classrooms into existing schools.

The number of schools reaching capacity increased during the 2023-24 and 2024-25 school years. Record enrolment growth, largely due to newcomers to Calgary, both interprovincial and international, continues to put pressure on the system. While this pressure has previously driven an increase in the number of schools in overflow status, the most recent data shows a slight decline. Below is the six-year trend of schools in overflow, showing both the number of schools in overflow status and the number of schools receiving overflowed students.



## Modular Classroom Classrooms – Recommended Schools for New Units

Following review of the school sites and consideration of all factors, obtaining new modular units for the following locations is recommended, in priority sequence:

Priority	School	Reasoning
1	Ernest Manning High School	2025 Opening Day utilization for this school is 126% and the projected 3-yr utilization is 125%. This school is expected to continue to see growth from the surrounding / developing communities. The creation of additional high school capacity is also a priority area identified in the 10-Year Student Accommodation and Facility Strategy (SAFS). Six new units will be requested.
2	Annie Foote School	2025 Opening Day utilization for this school is 98% and the projected 3-yr utilization is 121%. This school is currently the overflow receiver for Prairie Sky School. Continued growth of communities in the NE will continue to put strain on this school. Four new units will be requested.
3	Lester B. Pearson High School	2025 Opening Day utilization for this school is 116% and the projected 3-yr utilization is 118%. This school is expected to continue to see growth from the surrounding / developing communities. The creation of additional high school capacity is also a priority area identified in the 10Yr SAFS. Six new units will be requested.
4	Sibylla Kiddle School	2025 Opening Day utilization for this school is 100% and the projected 3-yr utilization is 116%. This school is expected to continue to see growth from the surrounding / developing communities. Six new units will be requested.
5	Marlborough School	2025 Opening Day utilization for this school is 99% and the projected 3-yr utilization is 110%. Continued growth of communities in NE Calgary will continue to put strain on this school. Two new units will be requested.
6	Windsor Park School	2025 Opening Day utilization for this school is 76% and the projected 3-yr utilization is 115%. This school is expected to continue to see significant growth from the surrounding communities. Due to densification projects Windsor Park School reopened as a Regular program school for the 2025-26 school year and is expected to reach capacity by its second year of opening. Two new units will be requested.
7	David Thompson School	2025 Opening Day utilization for this school is 99% and the projected 3-yr utilization is 111%. David Thompson School is dual track and offers both Regular and French Immersion programs, which impacts how space is used in the school. This school is expected to continue to see growth from the surrounding / developing communities. Six new units will be requested.

8	Marshall Springs School	2025 Opening Day utilization for this school is 88% and the projected 3-yr utilization is 107%. This school is expected to continue to see growth from the surrounding / developing communities. Six new units will be requested.
9	Ron Southern School	2025 Opening Day utilization for this school is 102% and the projected 3-yr utilization is 109%. This school is expected to continue to see growth from the surrounding / developing communities. Four new units will be requested.
10	Prince Of Wales School	2025 Opening Day utilization for this school is 92% and the projected 3-yr utilization is 107%. This school is expected to continue to see growth from the surrounding / developing communities. Four new units will be requested.
11	Georges P. Vanier School	2025 Opening Day utilization for this school is 109% and the projected 3-yr utilization is 107%. G. P. Vanier School is dual track and offers both Regular and French Immersion programs, which impacts how space is used in the school. Additionally, the French Immersion program was expanded in 2019 and as a result, larger cohorts from elementary schools will be feeding into the middle school level starting in 2025. Four new units will be requested.
12	Chief Justice Milvain School	2025 Opening Day utilization for this school is 113% and the projected 3-yr utilization is 99%. This school is expected to continue to see growth from the surrounding / developing communities. Two new units will be requested.
13	Manmeet Singh Bhullar School	2025 Opening Day utilization for this school is 104% and the projected 3-yr utilization is 101%. This school is expected to continue to see growth from the surrounding / developing communities. Two new units will be requested.
14	McKenzie Lake School	2025 Opening Day utilization for this school is 99% and the projected 3-yr utilization is 104%. This school is currently the overflow receiver for New Brighton School and Cranston School. Six new units will be requested.
15	Mountain Park School	2025 Opening Day utilization for this school is 82% and the projected 3-yr utilization is 96%. This school is expected to continue to see growth from the surrounding / developing communities. Four new units will be requested.

The Modular Classrooms Recommended for New Units (Attachment V) summarizes the justification for the schools listed above, including the number of units requested and projected utilization rates. In total, 64 new units are requested, for a total increase of approximately 1600 student spaces.

## **Schools Excluded from the List of Modular Unit Addition Requests**

Following review of the school sites and consideration of all factors, the addition of modular units at the following schools is not recommended:

- Alternative High School
- Annie Gale School
- Colonel Macleod School
- Coventry Hills School
- Dr. E. P. Scarlett High School
- Henry Wisewood High School
- Midsun School
- Panorama Hills School
- Richmond School
- Stanley Jones School
- William Reid School

The Modular Classrooms Excluded from Modular Unit Additions (Attachment VI) summarizes the justification for the schools listed above.

## **Disposition/Relocation of Existing Modular Classrooms**

No modular classrooms have been recommended for demolition, replacement, or relocation as part of the 2026-2027 Modular Classroom Program submission.

## **5 | Financial Impact**

---

Alberta Education and Childcare (AE&C) funds the relocation, addition and disposition of modular classrooms including consulting fees, construction costs and project expenses. However, AE&C does not fund connection corridors where required or new furniture, fixtures & equipment (FF&E) for modular relocation projects.

The CBE may need to provide capital funding for modular projects that include connection corridors or require additional furniture, fixtures & equipment beyond what is included in the MCP. Maintenance & Renewal (M&R) grants are not permitted to cover these project expenses on modular projects.

The total value for a modular classroom project includes the average base value, comprised of consulting fees, permits, transportation and installation costs (but excludes the purchase price of the modular itself) plus the value for site specific revisions associated to Code and Bylaw upgrades. Code and Bylaw upgrades are identified by The City of Calgary as conditions for receiving the development and building permits. Through experience, CBE can anticipate what Code and Bylaw upgrades may be required, but what will be needed is not known for certain until the development and building permit process is commenced. In the past, these upgrades could include, but are not limited to, firefighting access provisions, parking lot expansions, additional washroom facilities, playfield relocations, site grading, etc. These additional scopes of work are directly driven by existing site

conditions and these costs are used to calculate the Percentage Above Average Cost and Points Assignment which are referenced in Attachments IV and V, respectively. New for the 2026-27 MCP submission, AE&C and Alberta Infrastructure (AI) have provided more flexibility for the provision of connection corridors where building one will offer project savings through reduced Code and Bylaw upgrade requirements. CBE will request funding from AI for connection corridors wherever Code and Bylaw savings exceed the cost of the corridor itself as modulars that are directly connected to the main school facility are far preferred.

For new modular classroom addition projects, the average base project value has increased over time and now equals approximately \$300,000 per modular unit. Some costs associated with a modular project are not covered by AE&C and must be covered by CBE. This includes the cost for a connection corridor used to connect the modular(s) directly to the school (if one is required) as well as any FF&E costs in excess of the standard \$24,000 per unit provided by the government.

The total estimated project value for each new modular addition project (listed in priority order) is summarized below:

<b>School</b>	<b>Estimate of New Addition Costs, including connection corridors (Covered by AE&amp;C)</b>	<b>Estimate of Desks, Chairs, and Smartboards* (Covered by CBE)</b>
Ernest Manning High School	\$1,979,000	\$36,000
Annie Foote School	\$1,294,500	\$24,000
Lester B. Pearson High School	\$1,717,000	\$36,000
Sibylla Kiddle School	\$2,108,000	\$36,000
Marlborough School	\$837,500	\$12,000
Georges P. Vanier School	\$1,366,000	\$24,000
Windsor Park School	\$960,500	\$12,000
David Thompson School	\$2,254,500	\$36,000
Marshall Springs School	\$2,152,000	\$36,000
Ron Southern School	\$1,591,000	\$36,000
Prince of Wales School	\$1,758,500	\$24,000

Chief Justice Milvain School	\$694,500	\$12,000
Manmeet Singh Bhullar School	\$927,000	\$12,000
McKenzie Lake School	\$2,183,000	\$36,000
Mountain Park School	\$1,569,000	\$24,000
<b>Total</b>	<b>\$23,392,000</b>	<b>\$396,000</b>

*\* Estimates for tables and chairs will fluctuate based on the amount of furniture being ordered. AE&C provides \$24,000 per modular unit for FF&E for new modular projects, which does not cover all costs. All funding noted for FF&E will be covered through the Capital Reserve funded FF&E repository approved by the Board of Trustees on April 9, 2024. The FF&E funding required for the modular projects has still been included in the above table to indicate the total value required from the FF&E repository.*

## 6 | Implementation Consequence

AE&C requires school jurisdictions to submit their annual modular classroom program requests by November 1 each year.

Given the high number of modular classrooms being requested and the expectation that a significant portion of the CBE's request will be approved, the modular classroom projects will be bundled and released over the course of the 2026-27 school year. This approach ensures adequate time is provided to the modular manufacturer, consultants and contractors to complete designs, obtain permits and complete construction for all projects that receive provincial approval.

## 7 | Conclusion

The CBE recommends the request of 64 new modular units for the 2026-27 school year.

The high number of new modular units being proposed is directly in response to the continued high utilization rates being experienced and that is projected for several more years. This pressure is further compounded by the fact that only one new school is currently under construction, while the remaining 14 approved new schools are not expected to open for three to four more years.



JOANNE PITMAN  
CHIEF SUPERINTENDENT OF SCHOOLS



## ATTACHMENTS

Attachment I:	Eligibility Filters for Modular Classrooms
Attachment II:	Modular Classroom Ranking Criteria
Attachment III:	Modular Classroom Eligibility Filter Review 2025
Attachment IV:	Modular Classroom Points Assignment 2025
Attachment V:	Modular Classrooms Recommended for New Units 2025
Attachment VI:	Modular Classrooms Excluded from Modular Unit Additions 2025

## GLOSSARY – Developed by the Board of Trustees

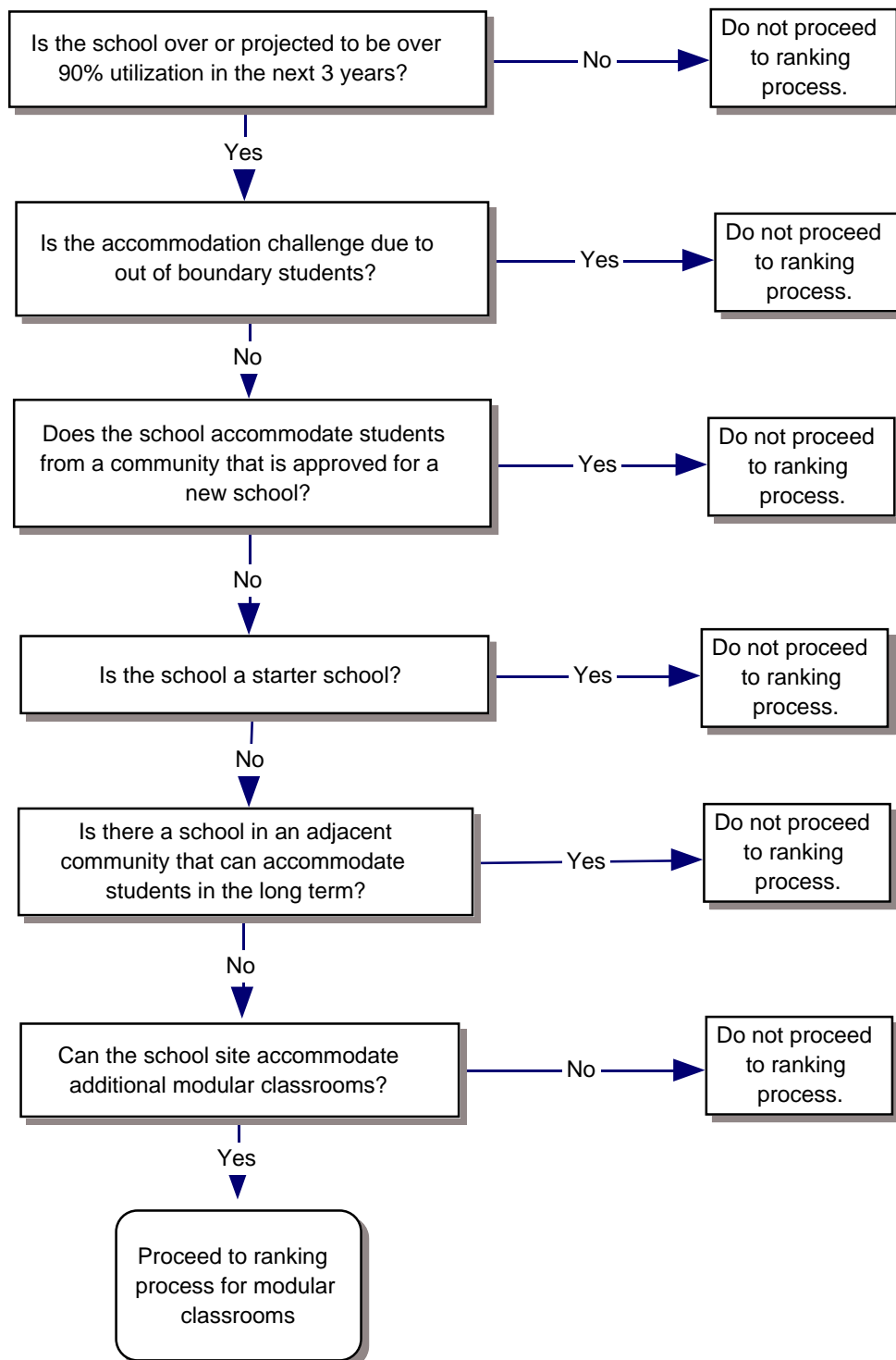
Board: Board of Trustees

Governance Culture: The Board defined in policy the individual and collective behaviour required to establish a culture of good governance. These policies establish standards for how the Board performs its work, including policies that define the Board's job, its purpose and its accountability.

Board/Chief Superintendent Relationship: The Board defined in policy the degree of authority delegated to the Chief Superintendent, and set out how the Chief Superintendent's performance, and ultimately the organization's performance, will be evaluated.

Results: These policies define the outcome the organization is expected to achieve for each student it serves. The Results policies are the performance targets for the Chief Superintendent and the organization, and form the basis for judging the success of the organization and the Chief Superintendent on reasonable progress towards achieving the Results.

Operational Expectations: These policies define both the non-negotiable expectations and the clear boundaries within which the Chief Superintendent and staff must operate. The Chief Superintendent is required to comply with the Board's stated values about operational conditions and actions as set out in these policies.



**CATEGORY A****Enrolment, Utilization, Projection****Strength of enrolment and utilization into the future (Projected 3-Year Utilization)**

Projected Utilization is less than 89%	0
Projected Utilization is between 90% to 99%	5
Projected Utilization is between 100 to 104%	10
Projected Utilization is between 105 to 109%	15
Projected Utilization is between 110 to 114%	20
Projected Utilization is between 115 to 119%	25
Projected Utilization is between 120 to 124%	30
Projected Utilization is between 125 to 129%	35
Projected Utilization is between 130 to 134%	40
Projected Utilization is between 135 to 139%	45
Projected Utilization is greater than 140%	50

**CATEGORY B****Site Features, Location****Ability to add modular units to the site. Ranking Range: 0 (difficult) to 1 (easy)**

Site Size - ability to accommodate portables	1
Physical Obstructions (large trees, playground equip, catch basins, elec. Transformers, etc)	1
Site Grading, contours (slope to portables not good)	1
Additional Parking Requirements	1
Additional Washroom stall / sink requirements	1
Sight lines for Security, creates concealed areas	1
Ability to locate portables near entrance	1
Ability to connect with a corridor	1
Ease of connecting services, ie gas, power, data	1
Proximity to underground services restricting placement (ie: main elec, water, sewer)	1
Proximity and quantity of windows opposite the modulars	1
Fire rating of school exterior wall	1
Existing Firewall on school to accommodate addition	1
Distance from Street (within 15m will allow for more)	1
Location on site for aesthetics.....front vs. rear vs. side	1
Existing catch basins in vicinity to portables for roof drainage	1
Proximity to main sidewalks (downspouts cause icing)	1

**CATEGORY C****Cost to Add Modular Units Compared to Average Cost to Add Modular Units to a Site****What is the anticipated cost of modular units at this site?**

1 = Poor \$\$\$\$	(more than 25% more)	5
2 = Fair \$\$\$	(Between 20 to 24% more)	10
3 = Good \$\$	(Between 15 to 19% more)	15
4 = Very Good \$	(Between 10 to 14% more)	20
5 = Excellent	(Less than 9% more)	25

## Attachment III: Modular Classroom Eligibility Filter Review 2025

School Name	Is school over or projected to be over 90% utilization in next 3 years?	Is accommodation challenge due to out of boundary students?	Does school accommodate students from a community that is approved for a new school?	Is the school a starter school?	Is there a school in an adjacent community that can accommodate students in the long term?	Can the school site accommodate additional modular classrooms?	Does the school meet all the filters to proceed to the ranking process for modular classrooms?
Alexander Ferguson School	Yes	Yes	-	-	-	-	-
Bowness High School	Yes	Yes	-	-	-	-	-
Bridlewood School	Yes	Yes	-	-	-	-	-
Cappy Smart School	Yes	Yes	-	-	-	-	-
Dr. E. W. Coffin School	Yes	Yes	-	-	-	-	-
Earl Grey School	Yes	Yes	-	-	-	-	-
Eric Harvie School	Yes	Yes	-	-	-	-	-
Ernest Morrow School	Yes	Yes	-	-	-	-	-
Evergreen School	Yes	Yes	-	-	-	-	-
Forest Lawn High School	Yes	Yes	-	-	-	-	-
Mount View School	Yes	Yes	-	-	-	-	-
Patrick Airlie School	Yes	Yes	-	-	-	-	-
Queen Elizabeth Jr/Sr High School	Yes	Yes	-	-	-	-	-
Ramsay School	Yes	Yes	-	-	-	-	-
Rosedale School	Yes	Yes	-	-	-	-	-
Rosemont School	Yes	Yes	-	-	-	-	-
Sunalta School	Yes	Yes	-	-	-	-	-
West Dalhousie School	Yes	Yes	-	-	-	-	-
West Dover School	Yes	Yes	-	-	-	-	-
Auburn Bay School	Yes	No	Yes	-	-	-	-
Bayside School	Yes	No	Yes	-	-	-	-
Belvedere Parkway School	Yes	No	Yes	-	-	-	-
Bob Edwards School	Yes	No	Yes	-	-	-	-
Cambrian Heights School	Yes	No	Yes	-	-	-	-
Catherine Nichols Gunn School	Yes	No	Yes	-	-	-	-
Clarence Sansom School	Yes	No	Yes	-	-	-	-
Dr. Gordon Higgins School	Yes	No	Yes	-	-	-	-
Dr. Roberta Bondar School	Yes	No	Yes	-	-	-	-
F.E. Osborne School	Yes	No	Yes	-	-	-	-
H.D. Cartwright School	Yes	No	Yes	-	-	-	-
Hawkwood School	Yes	No	Yes	-	-	-	-
James Fowler High School	Yes	No	Yes	-	-	-	-
Keeler School	Yes	No	Yes	-	-	-	-
Lakeshore School	Yes	No	Yes	-	-	-	-
Nickle School	Yes	No	Yes	-	-	-	-
North Haven School	Yes	No	Yes	-	-	-	-
O. S. Geiger School	Yes	No	Yes	-	-	-	-
Pineridge School	Yes	No	Yes	-	-	-	-
Simon Fraser School	Yes	No	Yes	-	-	-	-
Terry Fox School	Yes	No	Yes	-	-	-	-
Vincent Massey School	Yes	No	Yes	-	-	-	-
William D. Pratt School	Yes	No	Yes	-	-	-	-
Abbeydale School	Yes	No	No	No	Yes	-	-
Acadia School	Yes	No	No	No	Yes	-	-
Arbour Lake School	Yes	No	No	No	Yes	-	-
Balmoral School	Yes	No	No	No	Yes	-	-
Banff Trail School	Yes	No	No	No	Yes	-	-
Bowcroft School	Yes	No	No	No	Yes	-	-
Branton School	Yes	No	No	No	Yes	-	-
Brentwood School	Yes	No	No	No	Yes	-	-
Buchanan School	Yes	No	No	No	Yes	-	-

School Name	Is school over or projected to be over 90% utilization in next 3 years?	Is accommodation challenge due to out of boundary students?	Does school accommodate students from a community that is approved for a new school?	Is the school a starter school?	Is there a school in an adjacent community that can accommodate students in the long term?	Can the school site accommodate additional modular classrooms?	Does the school meet all the filters to proceed to the ranking process for modular classrooms?
Capitol Hill School	Yes	No	No	No	Yes	-	-
Captain John Palliser School	Yes	No	No	No	Yes	-	-
Chaparral School	Yes	No	No	No	Yes	-	-
Chris Akkerman School	Yes	No	No	No	Yes	-	-
Collingwood School	Yes	No	No	No	Yes	-	-
Colonel Sanders School	Yes	No	No	No	Yes	-	-
Dalhousie School	Yes	No	No	No	Yes	-	-
Dr. J. K. Mulloy School	Yes	No	No	No	Yes	-	-
Erin Woods School	Yes	No	No	No	Yes	-	-
Ethel M. Johnson School	Yes	No	No	No	Yes	-	-
Fairview School	Yes	No	No	No	Yes	-	-
Glamorgan School	Yes	No	No	No	Yes	-	-
Griffith Woods School	Yes	No	No	No	Yes	-	-
Haysboro School	Yes	No	No	No	Yes	-	-
Highwood School	Yes	No	No	No	Yes	-	-
Janet Johnstone School	Yes	No	No	No	Yes	-	-
Killarney School	Yes	No	No	No	Yes	-	-
King George School	Yes	No	No	No	Yes	-	-
Lake Bonavista School	Yes	No	No	No	Yes	-	-
Le Roi Daniels School	Yes	No	No	No	Yes	-	-
Louis Riel School	Yes	No	No	No	Yes	-	-
Maple Ridge School	Yes	No	No	No	Yes	-	-
Marion Carson School	Yes	No	No	No	Yes	-	-
New Brighton School	Yes	No	No	No	Yes	-	-
Queen Elizabeth School	Yes	No	No	No	Yes	-	-
R.T. Alderman School	Yes	No	No	No	Yes	-	-
Radisson Park School	Yes	No	No	No	Yes	-	-
Riverside School	Yes	No	No	No	Yes	-	-
Roland Michener School	Yes	No	No	No	Yes	-	-
Royal Oak School	Yes	No	No	No	Yes	-	-
Scenic Acres School	Yes	No	No	No	Yes	-	-
Silver Springs School	Yes	No	No	No	Yes	-	-
Sir Wilfrid Laurier School	Yes	No	No	No	Yes	-	-
Sundance School	Yes	No	No	No	Yes	-	-
The Hamptons School	Yes	No	No	No	Yes	-	-
Thornccliffe School	Yes	No	No	No	Yes	-	-
Tom Baines School	Yes	No	No	No	Yes	-	-
Tuscany School	Yes	No	No	No	Yes	-	-
Valley View School	Yes	No	No	No	Yes	-	-
Varsity Acres School	Yes	No	No	No	Yes	-	-
West Springs School	Yes	No	No	No	Yes	-	-
Western Canada High School	Yes	No	No	No	Yes	-	-
Wildwood School	Yes	No	No	No	Yes	-	-
Willow Park School	Yes	No	No	No	Yes	-	-
Woodbine School	Yes	No	No	No	Yes	-	-
Altadore School	Yes	No	No	No	No	No	-
Captain Nichola Goddard School	Yes	No	No	No	No	No	-
Citadel Park School	Yes	No	No	No	No	No	-
Colonel J. Fred Scott School	Yes	No	No	No	No	No	-
Copperfield School	Yes	No	No	No	No	No	-
Cranston School	Yes	No	No	No	No	No	-

School Name	Is school over or projected to be over 90% utilization in next 3 years?	Is accommodation challenge due to out of boundary students?	Does school accommodate students from a community that is approved for a new school?	Is the school a starter school?	Is there a school in an adjacent community that can accommodate students in the long term?	Can the school site accommodate additional modular classrooms?	Does the school meet all the filters to proceed to the ranking process for modular classrooms?
Crossing Park School	Yes	No	No	No	No	No	-
Douglas Harkness School	Yes	No	No	No	No	No	-
Dr. George Stanley School	Yes	No	No	No	No	No	-
Dr. Martha Cohen School	Yes	No	No	No	No	No	-
Falconridge School	Yes	No	No	No	No	No	-
Guy Weadick School	Yes	No	No	No	No	No	-
Hidden Valley School	Yes	No	No	No	No	No	-
Lord Beaverbrook High School	Yes	No	No	No	No	No	-
Northern Lights School	Yes	No	No	No	No	No	-
Nose Creek School	Yes	No	No	No	No	No	-
Rideau Park School	Yes	No	No	No	No	No	-
Robert Thirsk High School	Yes	No	No	No	No	No	-
Rundle School	Yes	No	No	No	No	No	-
Taradale School	Yes	No	No	No	No	No	-
Ted Harrison School	Yes	No	No	No	No	No	-
Valley Creek School	Yes	No	No	No	No	No	-
West Ridge School	Yes	No	No	No	No	No	-
Alternative High School	Yes	No	No	No	No	Yes	Yes
Coventry Hills School	Yes	No	No	No	No	Yes	Yes
John G. Diefenbaker High School	Yes	No	No	No	No	Yes	Yes
Panorama Hills School	Yes	No	No	No	No	Yes	Yes
Dr. E. P. Scarlett High School	Yes	No	No	No	No	Yes	Yes
Annie Foote School	Yes	No	No	No	No	Yes	Yes
Annie Gale School	Yes	No	No	No	No	Yes	Yes
Centennial High School	Yes	No	No	No	No	Yes	Yes
Chief Justice Milvain School	Yes	No	No	No	No	Yes	Yes
Colonel Macleod School	Yes	No	No	No	No	Yes	Yes
David Thompson School	Yes	No	No	No	No	Yes	Yes
Ernest Manning High School	Yes	No	No	No	No	Yes	Yes
Georges P. Vanier School	Yes	No	No	No	No	Yes	Yes
Henry Wise Wood High School	Yes	No	No	No	No	Yes	Yes
Lester B. Pearson High School	Yes	No	No	No	No	Yes	Yes
Manmeet Singh Bhullar School	Yes	No	No	No	No	Yes	Yes
Marlborough School	Yes	No	No	No	No	Yes	Yes
Marshall Springs School	Yes	No	No	No	No	Yes	Yes
McKenzie Lake School	Yes	No	No	No	No	Yes	Yes
Midsun School	Yes	No	No	No	No	Yes	Yes
Mount Royal School	Yes	No	No	No	No	Yes	Yes
Mountain Park School	Yes	No	No	No	No	Yes	Yes
Prince Of Wales School	Yes	No	No	No	No	Yes	Yes
Richmond School	Yes	No	No	No	No	Yes	Yes
Ron Southern School	Yes	No	No	No	No	Yes	Yes
Saddle Ridge School	Yes	No	No	No	No	Yes	Yes
Sibylla Kiddle School	Yes	No	No	No	No	Yes	Yes
Stanley Jones School	Yes	No	No	No	No	Yes	Yes
William Reid School	Yes	No	No	No	No	Yes	Yes
Windsor Park School	Yes	No	No	No	No	Yes	Yes

**Attachment IV: Modular Classroom Points Assignment 2025**

#	SCHOOL	PROGRAM	CATEGORY A Enrolment / Projection / Utilization	CATEGORY B Site Features / Location	CATEGORY C Cost Compared to Average	TOTAL
1	Ernest Manning High School	Regular	35	10	5	50
2	Annie Foote School	Regular	30	13	5	48
3	Lester B. Pearson High School	Regular and IB	25	10	10	45
4	Sibylla Kiddle School	Regular	25	12	5	42
5	Marlborough School	Regular	20	12	5	37
6	Windsor Park School	Regular	20	9	5	34
7	David Thompson School	Regular and French Immersion	20	9	5	34
8	Marshall Springs School	Regular	15	13	5	33
9	Ron Southern School	Regular	15	11	5	31
10	Prince Of Wales School	Regular	15	10	5	30
11	Georges P. Vanier School	Regular and French Immersion	15	9	5	29
12	Chief Justice Milvain School	Regular and Traditional Learning Centre	5	15	5	25
13	Manmeet Singh Bhullar School	Regular	10	9	5	24
14	McKenzie Lake School	Regular	10	8	5	23
15	Mountain Park School	Regular	5	7	5	17

Attachment V: Modular Classrooms Recommended for New Units 2025

School Name	Area	Planning Sector	Overflow Status	Projected Utilization w/o Overflow (2025)	Projected Utilization w/o Overflow (2027)	Overflowed To:	# of Units Requested	# of Student Spaces	New Utilization w/o Overflow (Projected 2025)	New Utilization w/o Overflow (Projected 2027)	Points Ranking	% above Avg. Cost	Playfields Impacted?	Site Revisions
Annie Foote School	4	NE	Receiver	103%	121%		4	100	86%	101%	48	32%	NO	New Sub Data Closet, Parking Expansion, Tree Replacement, Regrade Slopes, B/F Upgrade
Chief Justice Milvain School	4	NE		107%	99%		2	50	97%	90%	25	36%	NO	Parking Expansion, Regrade Slopes, B/F Upgrade
David Thompson School	6	S		103%	111%		6	150	85%	91%	34	58%	NO	New Sub Data Closet, Tree Replacement, New Firewall, Relocate Basketball field, Washroom Expansion, New Garbage Enclosure, Relocate Gas Line, B/F Upgrade
Ernest Manning High School	7	W		121%	125%		6	150	111%	115%	50	39%	NO	Design Complete- New Sub Data Closet, Special Foundation, B/F Upgrade
Georges P. Vanier School	2	C		106%	107%		4	100	91%	92%	29	39%	NO	New Sub Data Closet, Parking Expansion, Washroom Expansion, B/F Upgrade
Lester B. Pearson High School	4	NE		114%	118%		6	150	104%	107%	45	20%	NO	Design Complete- New Sub Data Closet, Parking Expansion, Tree Replacement
Manmeet Singh Bhullar School	4	NE		98%	101%		2	50	90%	92%	24	81%	NO	Parking Expansion, New Firewall, B/F Upgrade
Marlborough School	4	NE		99%	110%		2	50	86%	96%	37	73%	NO	New Firewall, Regrade Slopes, B/F Upgrade
Marshall Springs School	6	S		87%	107%		6	150	74%	91%	33	51%	NO	New Firewall, New Sub Data Closet, Parking Expansion, Tree Replacement, B/F Upgrade, Regrade Slopes, Relocate Basketball field
McKenzie Lake School	5	SE	Receiver	101%	104%		6	150	82%	84%	23	53%	NO	New Firewall, Parking Expansion, Washroom Expansion, Regrade Slopes, B/F Upgrade
Mountain Park School	5	SE		81%	96%		4	100	73%	85%	17	59%	NO	New Firewall, Parking Expansion, Tree Replacement, Regrade Slopes, B/F Upgrade
Prince Of Wales School	5	S		98%	107%		4	100	78%	85%	30	78%	NO	New Firewall, Parking Expansion, B/F Upgrade
Ron Southern School	6	S		103%	109%		4	100	87%	92%	31	63%	NO	New Firewall, New Sub Data Closet, Parking Expansion, Washroom Expansion, Regrade Slopes, B/F Upgrade
Sibylla Kiddle School	5	SE		111%	116%		6	150	88%	92%	42	48%	NO	New Firewall, New Sub Data Closet, Parking Expansion, Regrade Slopes, B/F Upgrade, Special Foundation
Windsor Park School	7	SW		85%	115%		2	50	68%	92%	34	87%	NO	New Firewall, Parking Expansion, Regrade Slopes, B/F Upgrade



# Attachment VI: Modular Classrooms Excluded from Modular Unit Additions 2025

School Name	Area	Planning Sector	Reason for Not Submitting
Alternative High School	6	C	Enrolment can be managed as students in this program could be supported through community schools in the CBE.
Annie Gale School	4	NE	Site review by Facility Projects determined this school will not be able to receive additional modulars classrooms.
Centennial High School	5	S	Previously approved for modular classrooms.
Colonel Macleod School	3	C	The anticipated openings of Evanston Middle School and a second elementary school within the next two years are expected to reduce TLC enrolment in the area.
Coventry Hills School	3	N	Projected enrolment for this school drops below 90% by 2029.
Dr. E. P. Scarlett High School	6	S	Previously approved for modular classrooms.
Henry Wise Wood High School	6	S	Site review by Facility Projects determined this school will not be able to receive additional modulars classrooms.
John G. Diefenbaker High School	2	N	Previously approved for modular classrooms.
Midsun School	5	S	Provincial capacity error inflated utilization; projected utilization is expected to fall below 90% following the correction
Mount Royal School	7	C	Previously approved for modular classrooms.
Panorama Hills School	2	N	Projected enrolment for this school drops below 90% by 2029.
Richmond School	7	C	Enrolment can be managed through an accomodation plan.
Saddle Ridge School	4	NE	This is a P3 school and is already at/above its maximum modular capacity.
Stanley Jones School	3	C	Site review by Facility Projects determined this school will not be able to receive additional modulars classrooms..
William Reid School	7	C	Site review by Facility Projects determined this school will not be able to receive additional modulars classrooms..