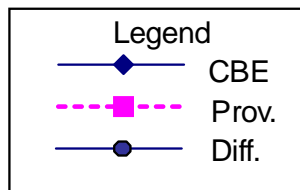
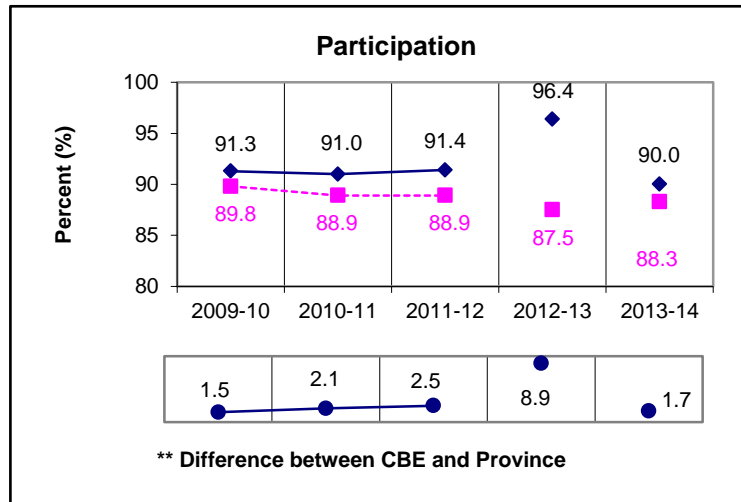
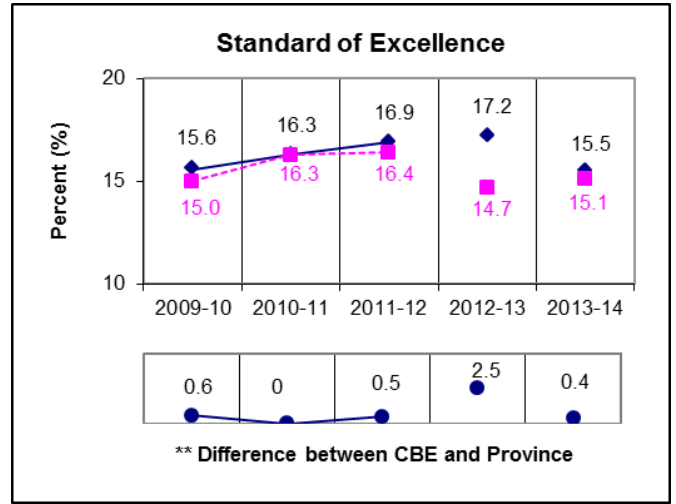
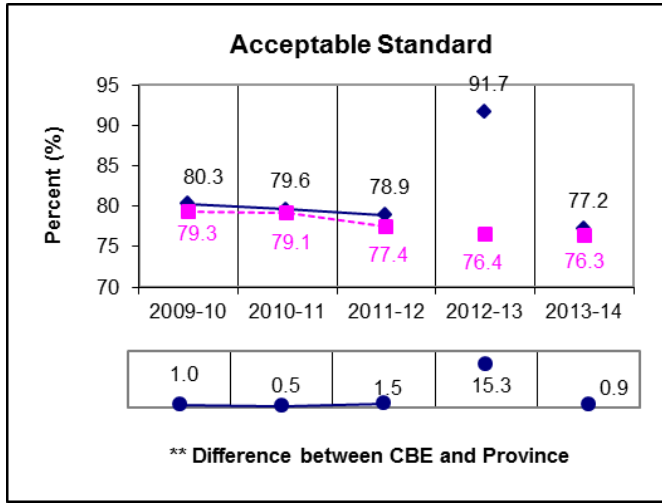


# Grade 9 English Language Arts Results

## \*All Students Enrolled (Cohort)



\* The **All Students Enrolled (Cohort)** category includes both writers and non-writers. Alberta Education requires jurisdictions to report cohort results.

\*\* A positive difference on the **Difference between CBE and Province** graph indicates the CBE result is higher than that of the province, whereas a negative difference indicates a lower CBE performance.

**NOTE:** It is important to note that participation in Grade 9 Provincial Achievement Tests was substantially impacted by the flooding in June 2013. Extreme caution should be used when interpreting trends over time.