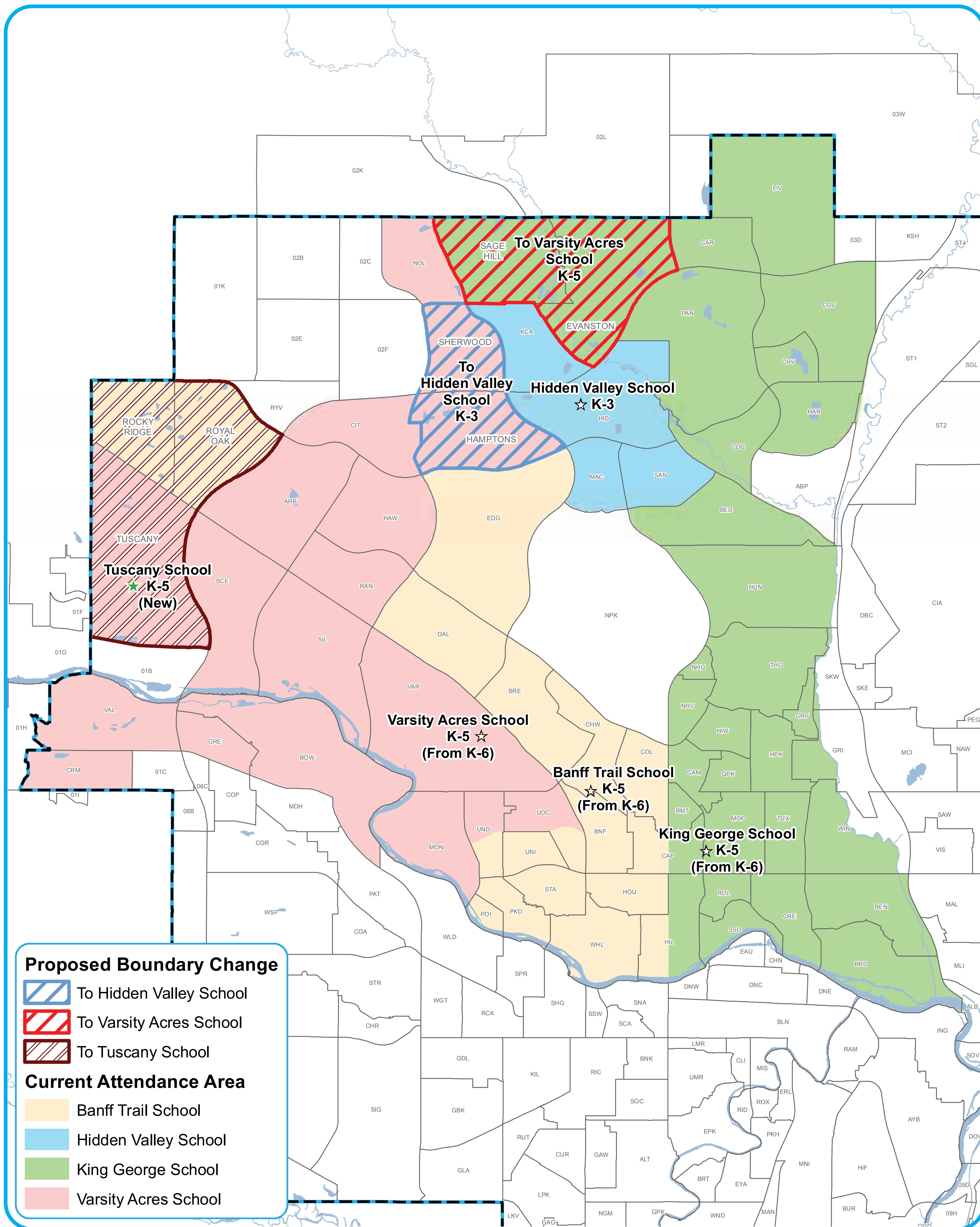




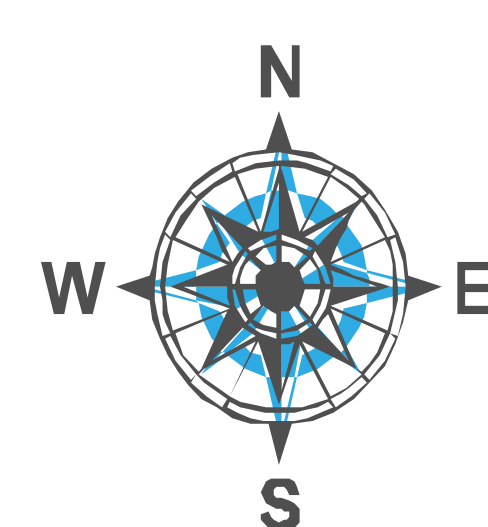
Elementary Schools

Early French Immersion Program Boundaries



School

- ★ Proposed French Immersion
- ☆ Currently Offers French Immersion
- Community
- Water Body
- CBE Boundary



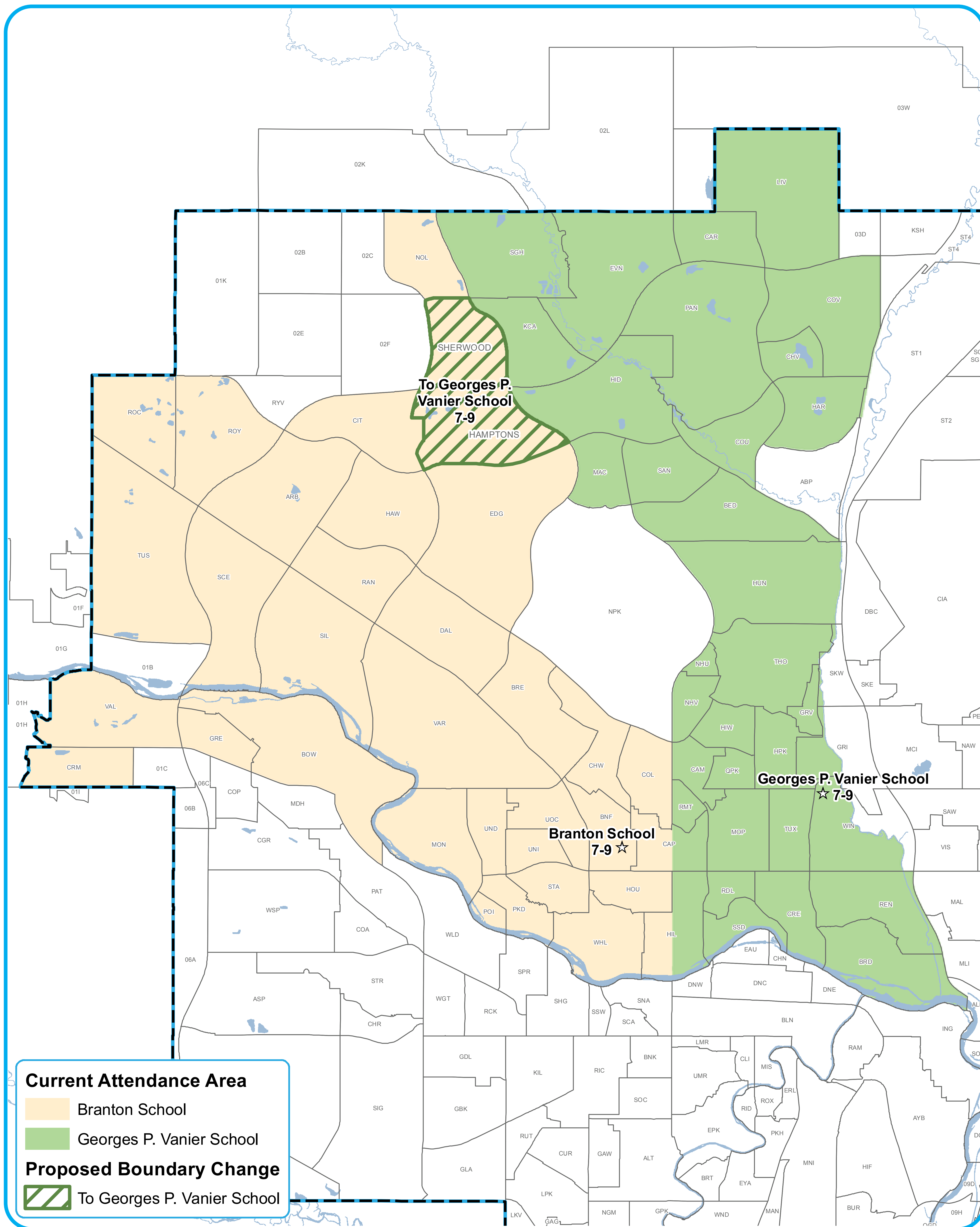
0 0.5 1 2 Kilometres
1:100,000

NAD 1983 3TM 114
Prepared by: Planning & Transportation
Map: North Elem FI - Draft.mxd
Date: September 25, 2018



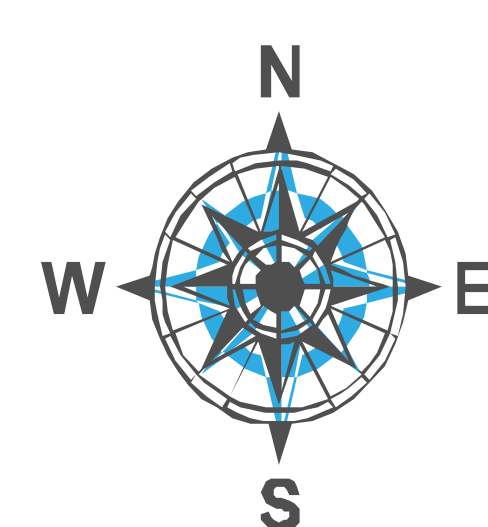
Junior High Schools

Late French Immersion Program Boundaries



School

- ★ Proposed French Immersion
- ☆ Currently Offers French Immersion
- CBE Boundary
- Community
- Water Body



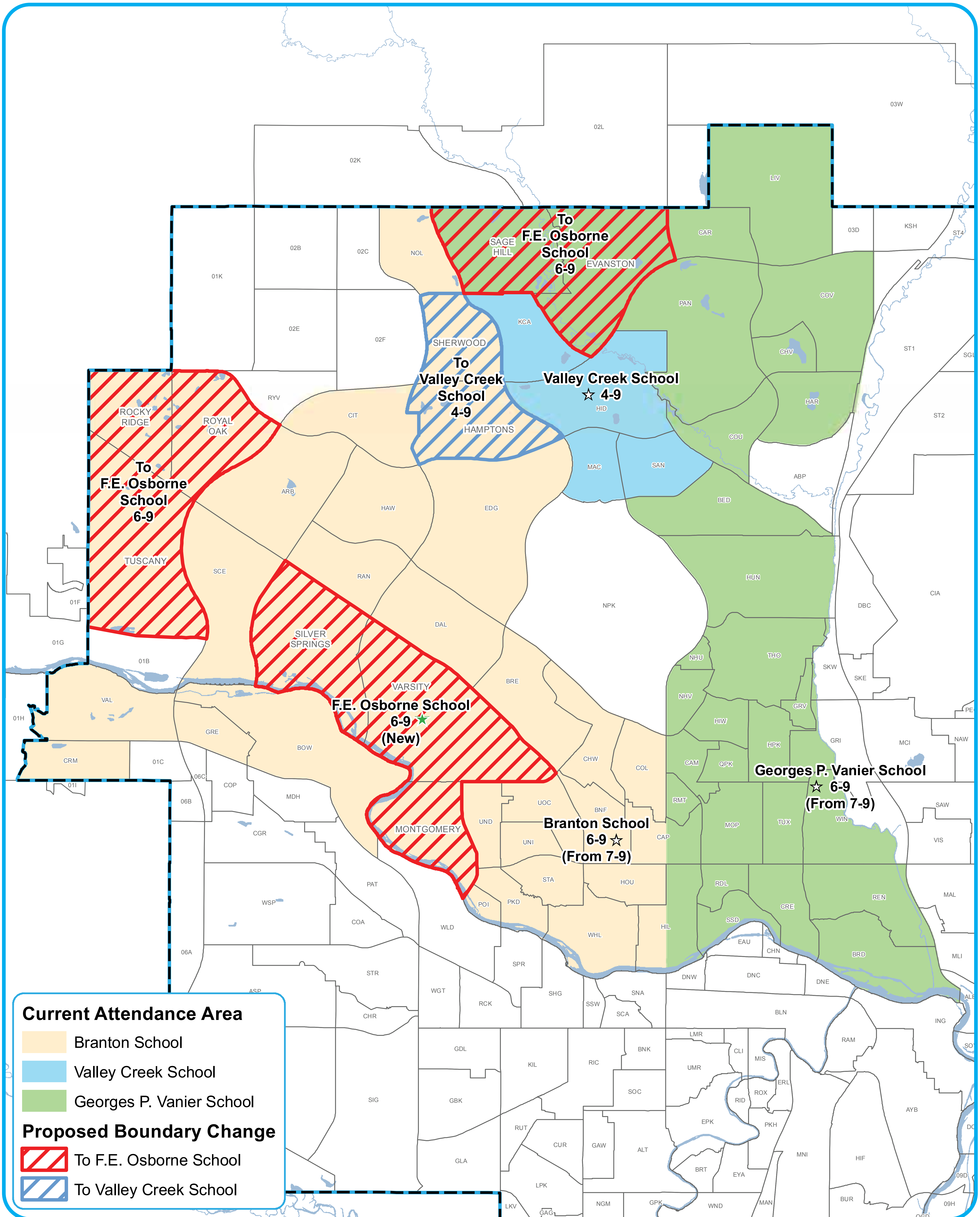
0 0.5 1 2 Kilometres
1:100,000

NAD 1983 3TM 114
Prepared by: Planning & Transportation
Map: North Elem FI - Draft.mxd
Date: September 25, 2018



Middle/Junior High Schools

Early French Immersion Program Boundaries



Current Attendance Area

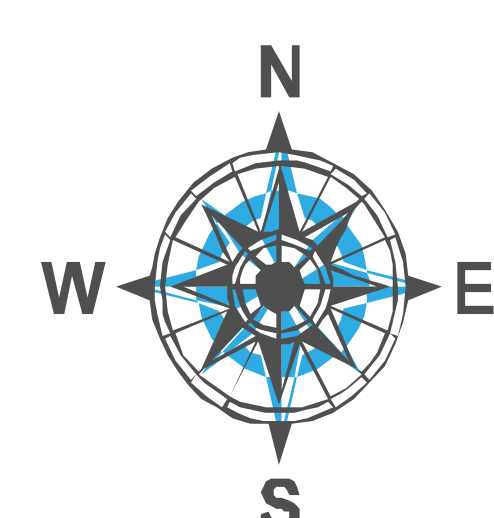
- Branton School
- Valley Creek School
- Georges P. Vanier School

Proposed Boundary Change

- To F.E. Osborne School
- To Valley Creek School

School

- ★ Proposed French Immersion
- ☆ Currently Offers French Immersion
- CBE Boundary
- Community
- ~ Water Body



0 0.5 1 2 Kilometres
1:100,000

NAD 1983 3TM 114
Prepared by: Planning & Transportation
Map: North Elem FI - Draft.mxd
Date: September 25, 2018