



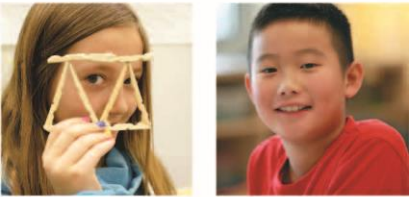
Consideration of Closure - Rosscarrock School

Public Meeting
March 7, 2019
Rosscarrock School Gymnasium



Calgary Board
of Education

Public Meeting



Consideration of Closure

Rosscarrock School

Thursday, March 7, 2019

7:00 p.m.

Acknowledging the land where we gather



We would like to acknowledge the traditional territories and oral practices of the Blackfoot Nations, which includes the Siksika, the Piikani, and the Kainai. We also acknowledge the Tsut'ina and Stoney Nakoda First Nations, the Métis Nation (Region 3), and all people who make their homes in the Treaty 7 region of Southern Alberta.

learning | [as unique](#) | as every student

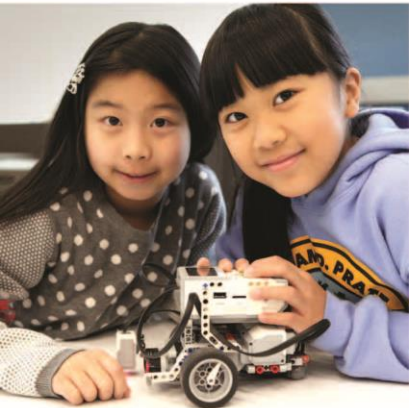
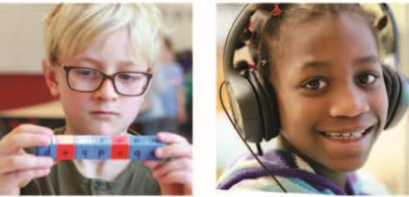


Welcome and Introductions – CBE Board of Trustees



- Trina Hurdman, Board Chair (Trustee Wards 1 & 2)
- Marilyn Dennis, Board Vice Chair (Trustee Wards 5 & 10)
- Althea Adams, Trustee (Wards 3 & 4)
- Lisa Davis, Trustee (Wards 6 & 7)
- Richard Hehr, Trustee (Wards 8 & 9)
- Julie Hrdlicka, Trustee (Wards 11 & 13)
- Mike Bradshaw, Trustee (Wards 12 & 14)

Welcome and Introductions – CBE Staff



- Christopher Usih, Chief Superintendent of Schools
- Dany Breton, Superintendent, Facilities & Environmental Services
- Calvin Davies, Director, Area 7
- Brenna Fraser, Principal, Rosscarrock School
- Kelly Ann Fenney, Acting General Counsel & Procedures Chair
- Carrie Edwards, Acting Director, Area 1, Moderator
- Trish Minor, Associate Corporate Secretary

Opening Remarks



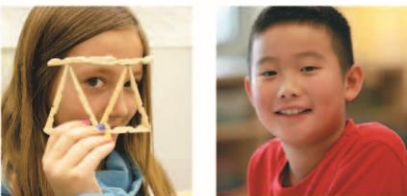
- Chief Superintendent
- Chair - Board of Trustees

Purpose of Meeting



- Review the information contained in the Written Notice and any other relevant information
- Provide opportunity to ask questions arising from the Written Notice

CBE Planning Principles



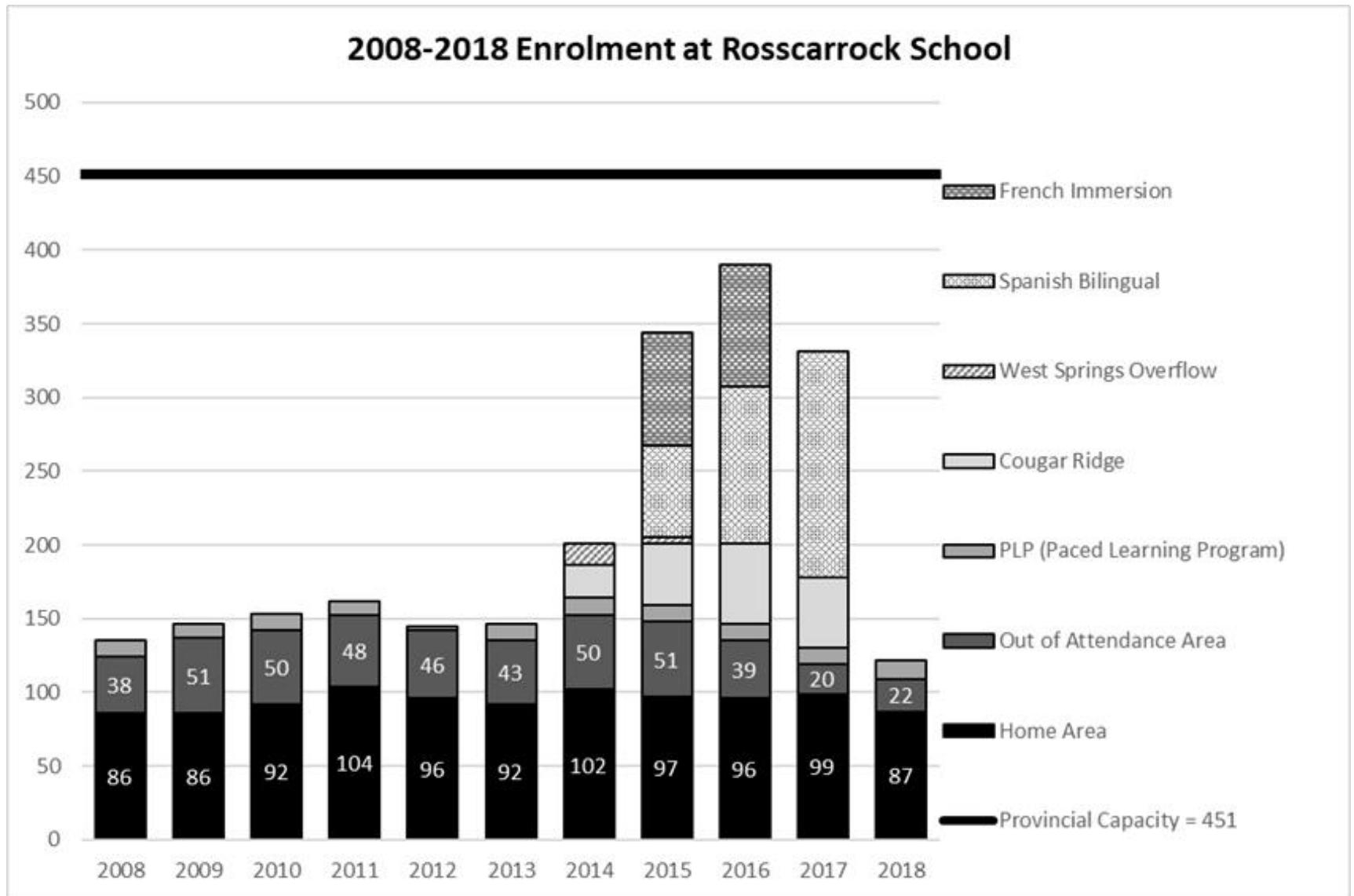
- Minimize disruptions for students
- Provide program continuity from Kindergarten to Grade 12
- Keep cohort groups of students together
- Allow students to attend school as close to home as possible
- Provide long term sustainability
- Use space and resources effectively
- Provide equitable access for all students to quality learning environments and choice of programs
 - AR 1090 Student Accommodation Planning Process

Background



- 2009 to 2013 - Rosscarrock School was identified as a school with low enrolment and excess capacity on CBE's Three Year System Student Accommodation Plan (SSAP)
- 2014 to June 2018 – Excess space at Rosscarrock School used to temporarily accommodate Spanish Bilingual and French Immersion students as well as West Springs overflow and Cougar Ridge regular program students
- Area 6&7 Impacted School Engagement in 2017-2018
- Decision in April 2018 to re-designate community of Cougar Ridge to West Springs School and monitor enrolment at Rosscarrock School starting September 2018
- September 2018 Spanish Bilingual students move to Glenmeadows School
- December 2018 and January 2019 meetings held with Rosscarrock staff and parents regarding low enrolment

Background



Issue

ROSSCARROCK SCHOOL

Provincial Capacity = 451

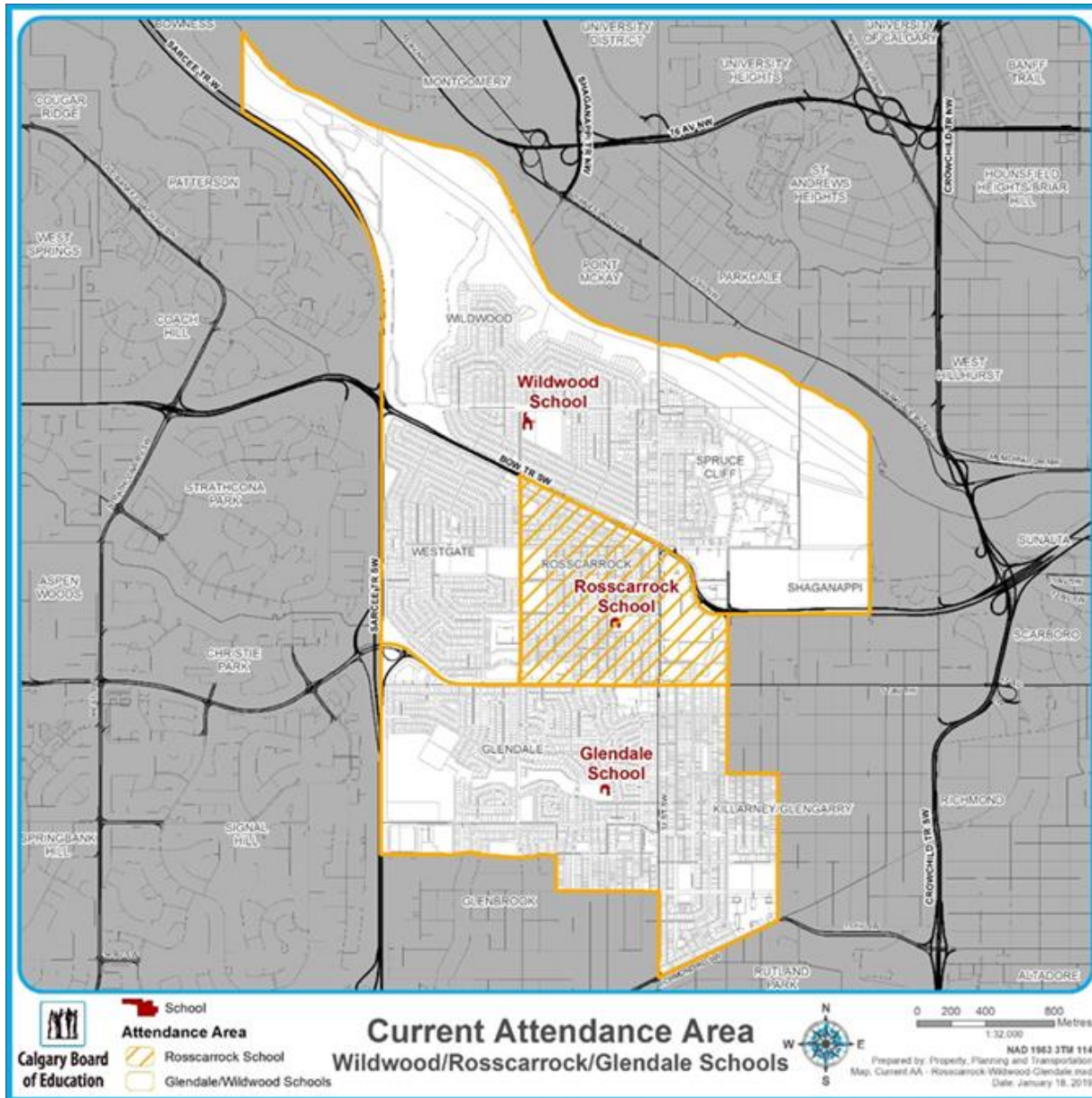
Enrolment as at September 30, 2018

Community	K	GR1	GR2	GR3	GR4	GR5	GR6	Total
Rosscarrock	13	6	14	10	13	20	11	87
PLP Program					2	5	6	13
Out-of-Attendance Area	4	2	2	5	4	4	1	22
Total	17	8	16	15	19	29	18	122

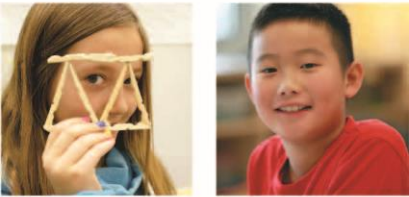
Enrolment in the regular program at Rosscarrock School is low and declining.

Low enrolment is expected to continue into the future and have impacts on student learning.

Rosscarock School Attendance Area



Enrolment Projections



Pre-School Census data

Enrolment trends

Projected Enrolment – If Rosscarrock School Remains Open

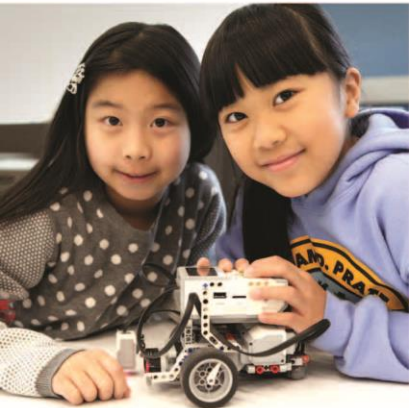
ROSSCARROCK SCHOOL

Provincial Capacity = 451

Projection for September 2019

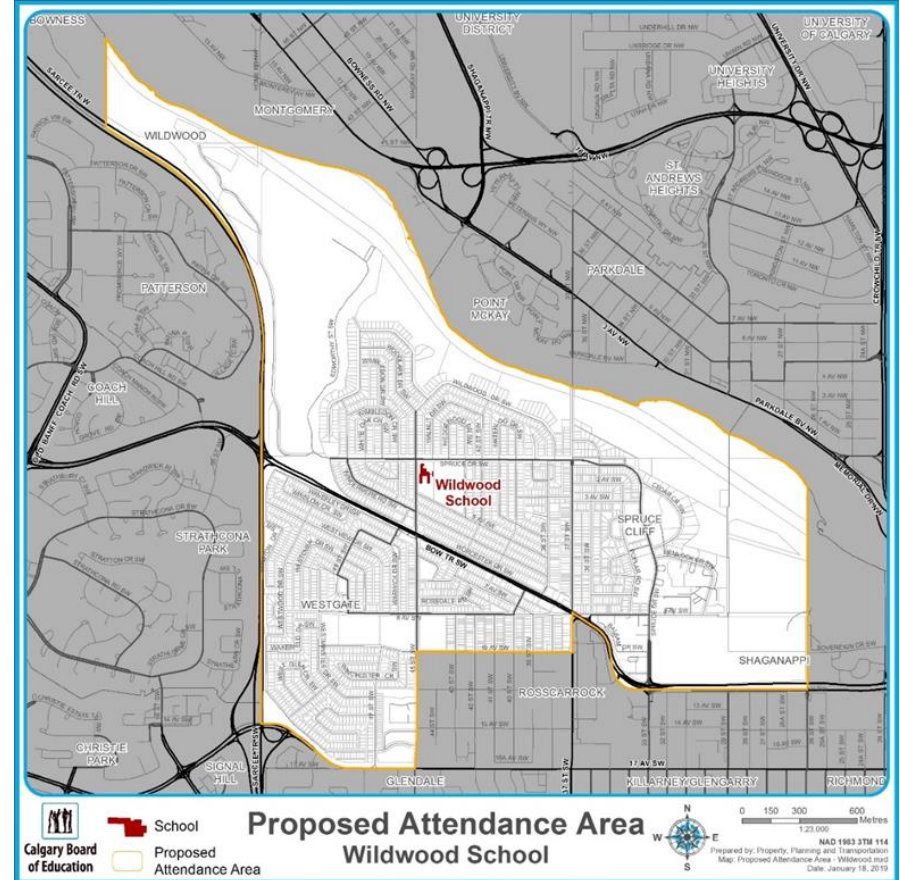
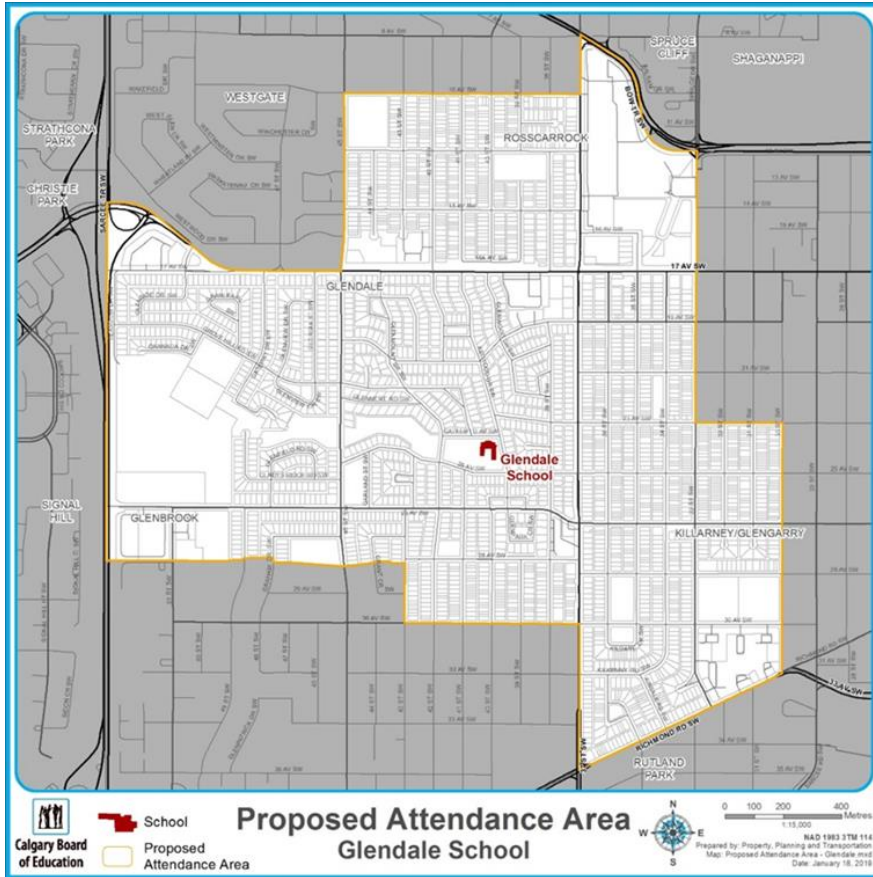
Community	K	GR1	GR2	GR3	GR4	GR5	GR6	Total
Rosscarrock	14	9	5	13	10	12	14	77
PLP Program					2	5	6	13
Out-of-Attendance Area	2	4	2	2	4	3	4	21
Total	16	13	7	15	16	20	24	111

Accommodation Plan

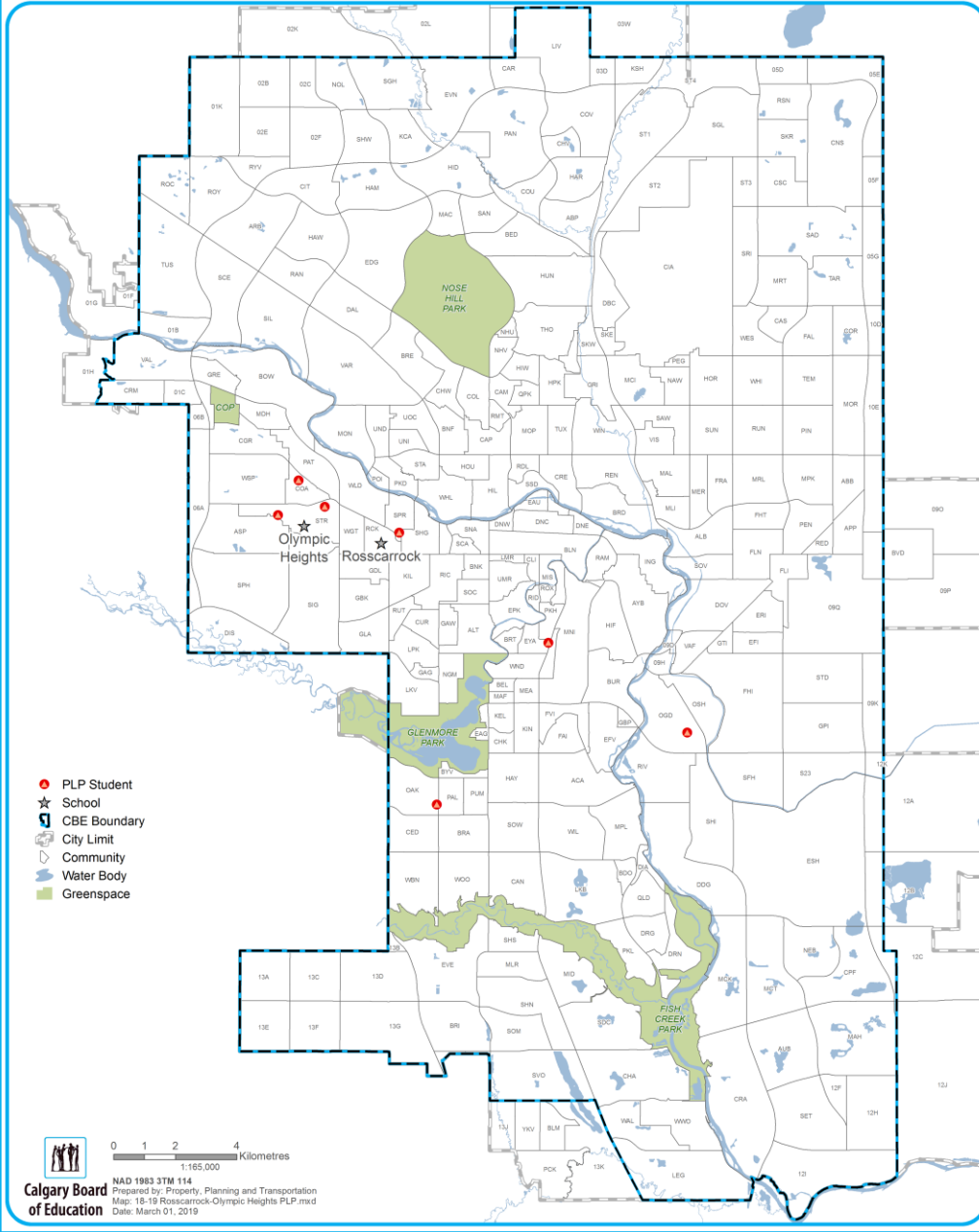


- Regular Program students are designated to Glendale School or Wildwood School
- PLP class moves to Olympic Heights School in the SW community of Strathcona Park
- Out of Attendance Area students return to their designated regular program community school

Accommodation Plan



PLP Students at Rosscarrock School (Grades 4-5) As of September 30, 2018



- PLP Student
- ★ School
- ▭ CBE Boundary
- ▭ City Limit
- ▭ Community
- ▭ Water Body
- ▭ Greenspace



Projected Enrolment at Glendale and Wildwood Schools if Rosscarrock School Closes

GLENDALE SCHOOL

Provincial Capacity = 304

Projection for September 2019	K	GR1	GR2	GR3	GR4	GR5	GR6	Total
Home Area	18	20	35	27	24	32	26	182
Students from Rosscarrock	6	8	3	9	8	9	13	56
Out-of-Attendance Area	3	0	4	2	3	3	11	26
Total	27	28	42	38	35	44	50	264

WILDWOOD SCHOOL

Provincial Capacity = 628

Projection for September 2019	K	GR1	GR2	GR3	GR4	GR5	GR6	Total
Home Area	37	42	32	58	43	44	53	309
LEAD					6	6	8	20
SKILL		3	4	5	3	1	1	17
Students from Rosscarrock	8	2	2	4	1	3	1	21
Out-of-Attendance Area	3	3	1	2	4	8	4	25
Total	48	50	39	69	57	62	67	392

Projected Enrolment at Olympic Heights School if Rosscarrock School Closes

OLYMPIC HEIGHTS SCHOOL

Provincial Capacity = 671

Projection for September 2019	K	GR1	GR2	GR3	GR4	GR5	GR6	Total
Home Area	68	82	82	67	85	80	86	550
Out-of-Attendance Area	2	7	7	15	15	12	14	72
PLP from Rosscarrock					2	5	6	13
Olympic Heights Total	70	89	89	82	102	97	106	635

Enrolment and Transportation Impacts



- The number of regular program students living in the Rosscarrock community who would need to be relocated as a result of the closure would be up to 77 students.
- Regular program students living in the Rosscarrock community can be accommodated at schools within walking distance of their residence
- Transportation services would continue to be provided to students in the PLP class to Olympic Heights School

CBE Capital Plans



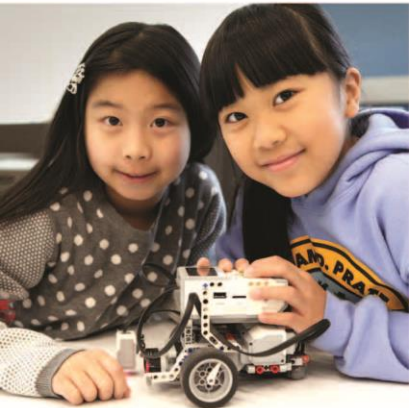
- No capital expenditures anticipated
- Three School Capital Plan 2019-2022
- <http://cbe.ab.ca/schools/building-and-modernizing-schools/Pages/default.aspx>

Programming and Education Impacts of Closing for Students



- Access to a larger peer group, which enhances the ability for grouping and regrouping students based on programming need
- Greater access to teacher expertise in areas such as music, languages and resource support
- A larger student population also provides greater access to a variety of extracurricular and co-curricular activities such as field trips.
- The larger student population in either Glendale or Wildwood translate into a greater number of teachers. This affords staff with the opportunity to work in teams to design learning opportunities for students and discuss teaching practice with one another.
- Programming for students in the PLP class would not change

Programming and Educational Impacts of Closing for Other Schools



- Regular program students who live in the Rosscarrock community will be re-designated to either Glendale or Wildwood school.
- The PLP class will be moved to Olympic Heights.
- These schools have a strong student population base and the number of students re-designated to each location can be accommodated now and into the future.
- There would be no educational or programming impact at these schools due to the number of students being re-designated.

Programming and Educational Impacts of Remaining Open



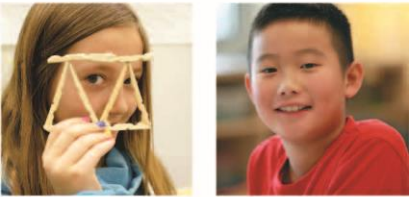
- Currently there are 5 Kindergarten pre-registrations. This would mean re-designating the Kindergarten students to another school or looking at a blended kindergarten, grade 1 and grade 2 single classroom.
- It is anticipated that there would be limited extracurricular and co-curricular offerings for 2019-2020 as both the number of staff and the volunteer base to meet required off-site supervision ratios would be a challenge.
- The support and development of a School Council is a challenge; the current School Council only has two members. It is anticipated that, should the school remain open, this challenge will continue into 2019-2020.

Financial Implications of Remaining Open



- Including staffing costs, the total annual administrative costs to operate the school are approximately \$1.5 to \$2 million dollars
- The Area Office would likely need to increase financial support beyond what is currently provided.
- Depending on final enrolment as of September 2019 it could be as high as \$150,000 (approx. 50% of the funds allocated to the Area).

Financial Implications of Closing



- The per school allotment for a principal, office and library staff would be saved; this would amount to approximately \$200,000.
- The annual average building operating and maintenance costs are approximately \$150,000-\$190,000. This includes maintenance and custodial staff, utilities and maintenance and repairs.
- There would be no impact on transportation costs.
- No discretionary funds would be required from the Area Office (savings of up to \$150,000).

Future Use of Facility



CBE's future use of the facility will reviewed in alignment with :

- CBE's Three-Year Capital Plan,
- Three-year System Student Accommodation Plan and
- Ten-Year System Accommodation and Facilities Strategy

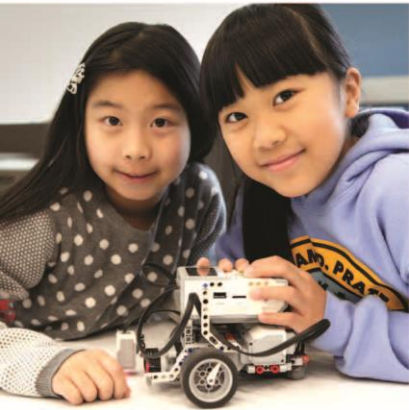


Past examples of uses of closed buildings include:

- Disposal of the building
- CBE alternative program
- Lease of building (i.e. Charter School)
- CBE administrative use
- Temporary accommodation of students



Questions



- Previously Submitted or Anticipated Questions

Questions



- How will school council funds be distributed?

Questions



- Has CBE considered an alternative program at Rosscarrock School?

Questions



- Is CBE aware of the future development proposed in this area?

Question: Is CBE aware of future development proposed in this area?



Figure 1: Westbrook Station Development Site

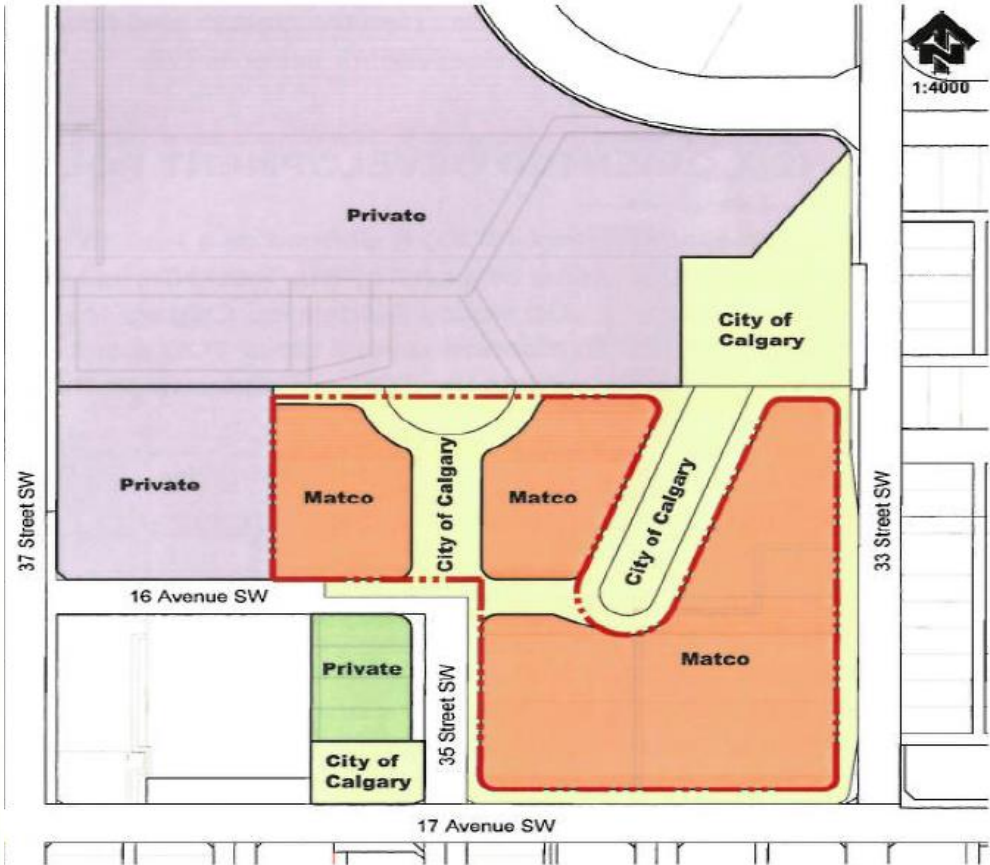


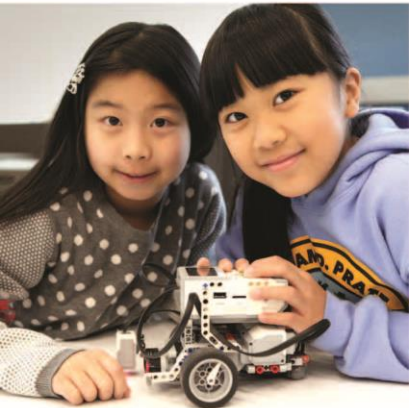
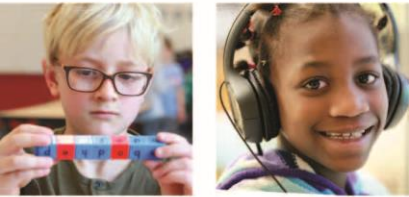
Figure 2: Adjacent Property Ownership Map

Question: What are the plans for future development at Westbrook Station?



- Any development will take several years to occur.
- The most recent proposal is based on 1,153 units. The number of units may change once Outline Plans are submitted.
- Anticipated to be primarily multi units (e.g. Townhouses and Apartments).
- Approximately 25 to 30 students could be anticipated to attend Rosscarrock School once development is complete.
- The proposal for the indoor soccer field was cancelled by the developer.

Questions



- What will happen to the childcare program?

Questions



- Can out of attendance area students move with their friends to Glendale School or Wildwood School?

Input and Questions



Attention: Calvin Davies, Director, Area 7

Calgary Board of Education

3445 – 37 Street SW

Calgary AB T3E 3C2

t | 403-777-8750



Email directly to dialogue@cbe.ab.ca

Please respond in writing on the form
provided



By Noon on Monday, April 8, 2019

learning | as unique | as every student



**Calgary Board
of Education**