

Site Plan General Notes

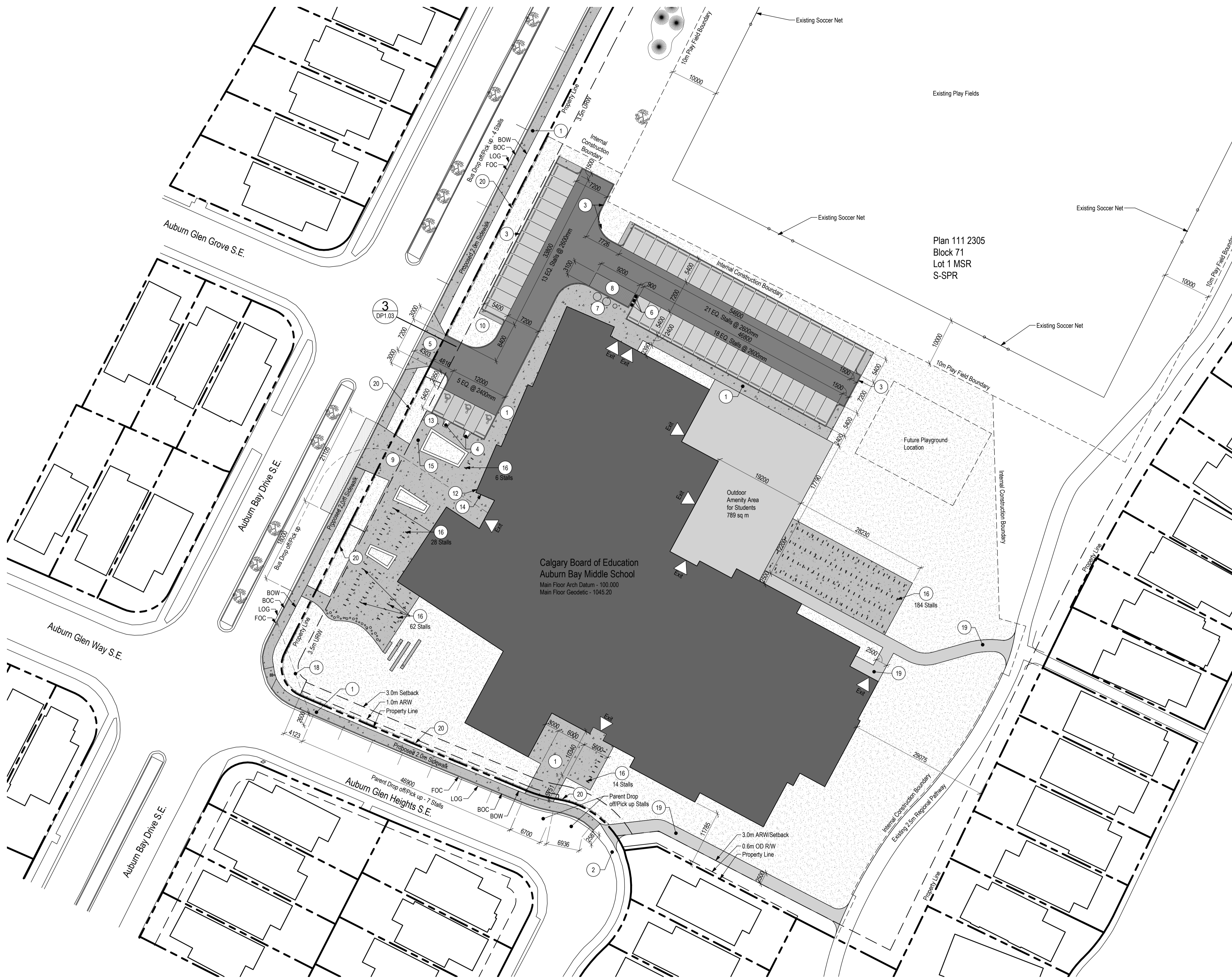
1. REFER TO CIVIL DRAWINGS FOR SPECIFIC RELATED REQUIREMENTS
2. REFER TO ELECTRICAL SITE PLAN FOR ALL LIGHTING INFORMATION
3. REFER TO LANDSCAPE PLAN FOR SPECIFIC RELATED REQUIREMENTS
4. ALL EXISTING TREES TO REMAIN UNLESS NOTED OTHERWISE

Symbol Legend - Site Plan

- EXTENT OF PROPOSED BUILDING
- EXTENT OF CONCRETE SIDEWALK
- EXTENT OF HEAVY DUTY ASPHALT PAVING
- EXTENT OF LIGHT DUTY ASPHALT PAVING
- EXTENT OF SOFT LANDSCAPING
- PROPERTY LINE
- SETBACK LINE
- UTILITY RIGHT OF WAY LINE
- EXISTING FIRE HYDRANT LOCATION
- PROPOSED TRANSFORMER LOCATION
- EXISTING LIGHT STANDARD LOCATION
- PROPOSED LIGHT STANDARD LOCATION
- PROPOSED BIKE RACK LOCATION
- PAINTED PARKING LINE ON ASPHALT PAVING
- PAINTED BARRIER FREE PARKING SYMBOL ON ASPHALT PAVING
- PROPOSED POST MOUNTED SIGNAGE
- EXISTING TREES TO REMAIN

Site Plan Keynote Legend

- 1 PROPOSED CONCRETE SIDEWALK
- 2 EXISTING CITY OF CALGARY SIDEWALK
- 3 150mm CONCRETE CURB - REFER TO CITY OF CALGARY DESIGN STANDARDS - REFER TO DETAIL 1/DP1.04
- 4 BARRIER FREE CONCRETE CURB RAMP - REFER TO CITY OF CALGARY DESIGN STANDARDS - REFER TO DETAIL 4/DP1.04
- 5 CONCRETE APRON - REFER TO CITY OF CALGARY DESIGN STANDARDS
- 6 CONCRETE FILLED STEEL BOLLARDS - REFER TO DETAIL 7/DP1.04
- 7 WASTE & RECYCLING MOLOK BINS - REFER TO DRAWING A1.03
- 8 LOADING STALL
- 9 FIRE TRUCK ACCESS LANE
- 10 PROPOSED TRANSFORMER - REFER TO ELECTRICAL DRAWINGS
- 11 PROPOSED LIGHT STANDARD - REFER TO ELECTRICAL DRAWINGS
- 12 PROPOSED SIAMESE CONNECTION LOCATION
- 13 PROPOSED FIRE HYDRANT LOCATION - REFER TO CIVIL DRAWINGS
- 14 PROPOSED FIRE LOCK BOX LOCATION
- 15 PROPOSED FLAG POLE LOCATION - REFER TO DETAIL 6/DP1.04
- 16 U-STYLE BICYCLE RACKS - REFER TO DETAIL 9/DP1.04
- 17 CLASS #1 BICYCLE RACK LOCATION - REFER TO DETAIL 8/DP1.04
- 18 CORNER VISIBILITY TRIANGLE 7.5m FROM CURB INTERSECTION
- 19 PROPOSED ASPHALT PATHWAY
- 20 PROPOSED 1.2m HIGH CHAINLINK FENCE - REFER TO LANDSCAPE DRAWINGS



1 Design Site Plan - Enlarged
 DP1.02 SCALE: 1:400

SITE PLAN - ENLARGED



CLIENT
 CALGARY BOARD OF EDUCATION
 PROJECT NAME
Calgary - Auburn Bay Middle School
 Project Number: 1828

REVISION	DESCRIPTION	DATE

DP1.02

NOT FOR CONSTRUCTION

GENERAL NOTES:
 -All work shall be done in accordance with the City of Calgary Standard Specifications Landscape Construction current edition.
 -All planting to conform to the standards of the Canadian Nursery Landscape Association.
 -All plant beds to be mulched.
 -All soft landscape areas to be irrigated manually by water truck unless otherwise noted.
 -All dimensions in millimeters except where noted otherwise.
 -Do not scale drawings



SITE DESCRIPTION
 MUNICIPAL ADDRESS:
 LEGAL DESCRIPTION:
 PLAN 111 2305 BLOCK 71 LOT 1 MSR
 LAND USE:
 S - SPR

LANDSCAPE CALCULATIONS
 TOTAL SETBACK AREA: 754 SQ.M
 TOTAL NUMBER OF TREES REQUIRED IN SETBACK AREA (1.2 TREES/70 SQ.M): 13
 TOTAL NUMBER OF TREES PROPOSED IN SETBACK AREA: 10
 TOTAL NUMBER OF TREES PROPOSED OUTSIDE OF SETBACK AREA: 25



3 CONCRETE TERRACED SEATING
 NTS



2 CONCRETE STEPPING STUMPS
 NTS

EXISTING TREES TO REMAIN

NO.	SPECIES	CALIPER MM (DBH)	MATURE HEIGHT IN M
1	PRUNUS VIRGINIANA 'SCHUBERT'	80	5
2	"	90	5
3	"	90	5
4	CRATAEGUS MORDENSIS 'SNOWBIRD'	70	3
5	"	70	3
6	PRUNUS VIRGINIANA 'SCHUBERT'	60	5
7	"	70	5
8	"	70	5
9	CRATAEGUS MORDENSIS 'SNOWBIRD'	70	3
10	"	80	3
11	"	70	3
12	"	70	3
13	"	50	3
37	ULMUS AMERICANA 'BRANDON'	100	15
38	"	90	15
39	"	140	15
40	"	140	15
41	"	150	15
42	"	100	15
43	"	90	15
44	"	90	15
45	"	90	15
46	"	70	15
47	FRAXINUS PENNSYLVANICA	60	12
48	"	60	12
49	"	70	12
50	"	60	12
51	ULMUS AMERICANA 'BRANDON'	80	15
52	"	70	15
53	"	80	15
54	"	80	15
55	PRUNUS PADUS COMMUTATA	60	10
56	"	60	10
57	"	60	10
58	PICEA PUNGENS	120	12
59	"	160	12
60	"	160	12
61	"	150	12
62	"	130	12
63	"	150	12
64	"	140	12
65	"	80	10
66	"	80	10
67	"	100	10
68	PICEA PUNGENS	150	12
69	"	140	12
70	"	120	12
71	"	100	12
72	"	120	12
73	"	140	12
74	"	120	12
75	"	130	12
76	CELTIS OCCIDENTALIS	80	10
77	"	90	10
78	"	90	10
79	PICEA PUNGENS	140	12
80	"	120	12
81	"	120	12
82	POPULUS SP.	90	15
83	"	70	15
84	"	80	15
85	"	100	15
86	PRUNUS VIRGINIANA 'SCHUBERT'	60	5
87	"	60	5
88	"	60	5
89	"	60	5
90	"	60	5
91	"	60	5
92	PICEA PUNGENS	120	12
93	"	130	12
94	"	120	12
95	"	100	12
96	"	130	12
97	"	120	12
98	ULMUS AMERICANA 'BRANDON'	90	15
99	"	70	15
100	"	80	15
101	PICEA PUNGENS	170	12

EXISTING TREES TO BE REMOVED

NO.	SPECIES	CALIPER MM (DBH)	MATURE HEIGHT IN M
14	FRAXINUS MANDSHURICA	70	8
15	"	80	8
16	"	70	8
17	"	70	10
18	ULMUS AMERICANA 'BRANDON'	90	15
19	ULMUS AMERICANA 'BRANDON'	90	15
20	"	100	15
21	"	70	15
22	FRAXINUS MANDSHURICA	60	8
23	"	60	8
24	"	60	8
25	FRAXINUS MANDSHURICA	60	8
26	ULMUS AMERICANA 'BRANDON'	80	15
27	ULMUS AMERICANA 'BRANDON'	80	15
28	"	80	15
29	"	90	15
30	FRAXINUS MANDSHURICA	80	8
31	"	80	8
32	"	70	8
33	"	60	8
34	ULMUS AMERICANA 'BRANDON'	90	15
35	"	80	15
36	"	80	15
119	ULMUS AMERICANA 'BRANDON'	70	15

LEGEND

- PROPOSED ORNAMENTAL GRASSES
- PROPOSED KENTUCKY BLUEGRASS AND FESCUE BLEND SOD
- PROPOSED ASPHALT
- PROPOSED CONCRETE
- PROPOSED COMPACTED CRUSHED STONE
- 1000.00 EXISTING SPOT ELEVATION
- PROPOSED SPOT ELEVATION
- PROPOSED ROCK BOULDER
- EXISTING TREES TO REMAIN
- EXISTING TREE TO BE REMOVED

PROPOSED TREES

SYMBOL	KEY	QTY	COMMON NAME	BOTANICAL NAME	SIZE	COMMENTS
○	SSC	4	SPRING SNOW CRABAPPLE	MALUS X 'SPRING SNOW'	75MM CAL.	STRAIGHT STEMMED
○	TA	17	TREMBLING ASPEN	POPULUS TREMLOIDES	75MM CAL.	STRAIGHT STEMMED
○	JTL	4	IVORY SILK JAPANESE TREE LILAC	SYRINGA RETICULATA 'IVORY SILK'	75 MM CAL.	STRAIGHT STEMMED
○	PGA	10	PRAIRIE SPIRE GREEN ASH	FRAXINUS PENNSYLVANICA 'RUGBY'	50 MM CAL.	STRAIGHT STEMMED

PROPOSED SHRUBS

SYMBOL	KEY	QTY	COMMON NAME	BOTANICAL NAME	SIZE	COMMENTS
○	GS	39	GRO-LOW SUMAC	RHUS AROMATICA 'GRO-LOW'	300 MM HEIGHT MIN. #5 CONT.	UNIFORM. 900MM O.C.SPACING

1 LANDSCAPE PLAN
 1:400

LANDSCAPE PLAN



CLIENT
 CALGARY BOARD OF EDUCATION
 PROJECT NAME
Auburn Bay 5-9 School
 Project Number: 1828

REVISION	DESCRIPTION	DATE
1	SUBMITTED FOR REVIEW	JUNE 20, 2019
2	SUBMITTED FOR DP	AUGUST 30, 2019

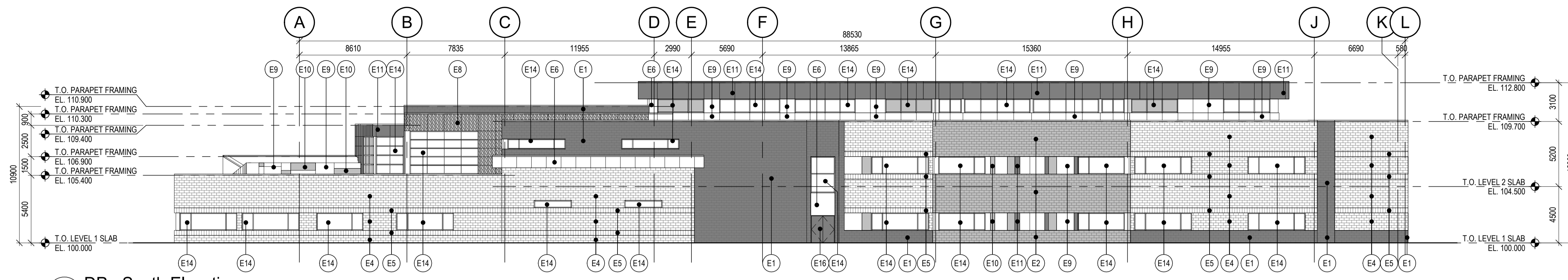
DPL1.2



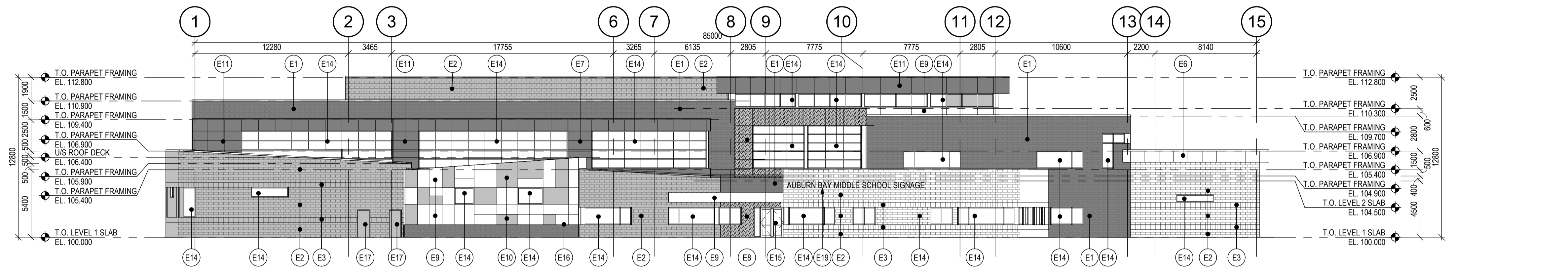
- Occupancy
- Accessible Washroom
 - Admin & Staff
 - Ancillary Small
 - Circulation
 - Classroom
 - Information Services
 - Mech & Meter
 - Science
 - Storage
 - Student Collaboration
 - Washroom
 - Wiring Network
 - Wrap Around

1 Second Floor Plan
 DP2.1 SCALE: 1 : 200
 A0.05

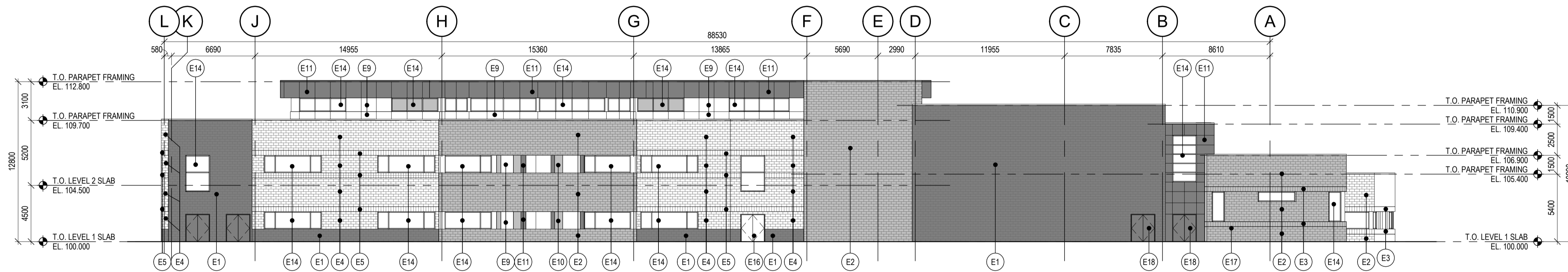
SECOND FLOOR PLAN



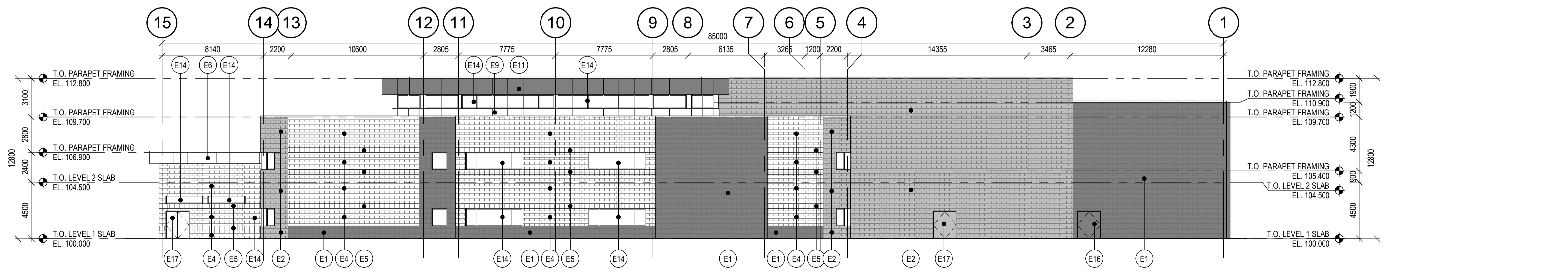
1 DP - South Elevation
 DP4.00 SCALE: 1:200



2 DP - West Elevation
 DP4.00 SCALE: 1:200



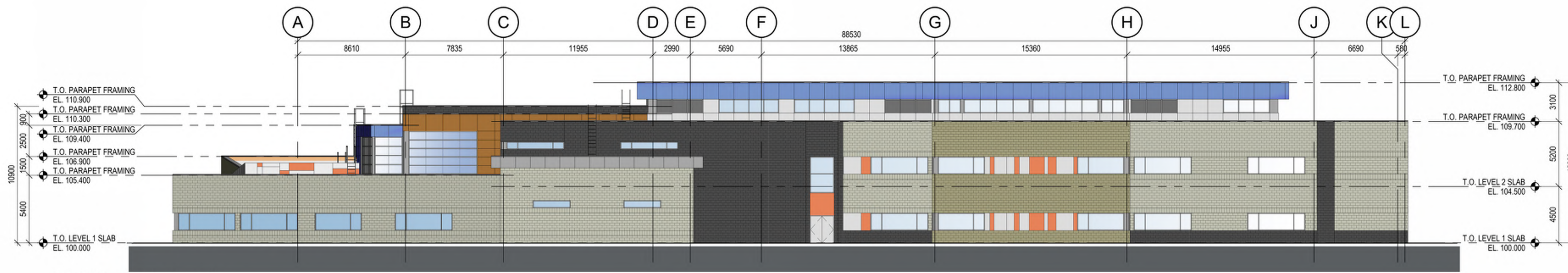
3 DP - North Elevation
 DP4.00 SCALE: 1:200



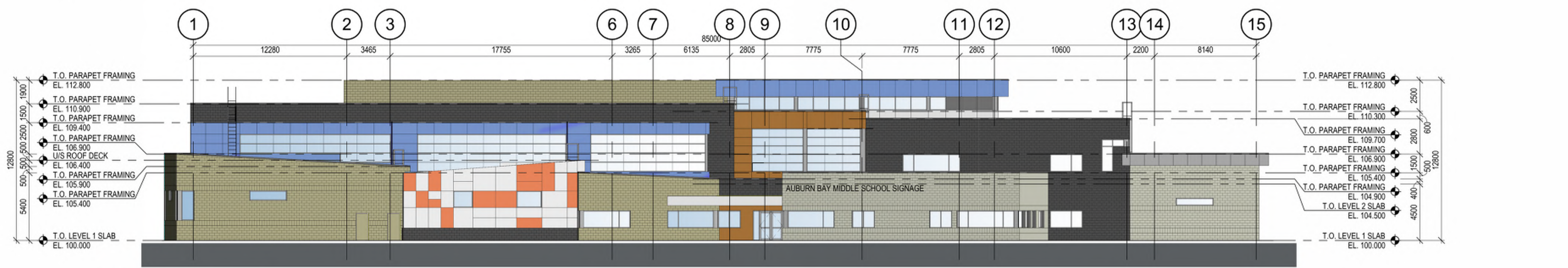
4 DP - East Elevation
 DP4.00 SCALE: 1:200

Keynote Legend	
(E1)	CONCRETE BLOCK MASONRY VENEER - EXPOCRETE COLOUR: CHARCOAL - MORTAR COLOUR: CHARCOAL
(E2)	CONCRETE BLOCK MASONRY VENEER - EXPOCRETE COLOUR: MEDIUM BEIGE - MORTAR COLOUR: BEIGE
(E3)	CONCRETE BLOCK MASONRY VENEER SOLDIER COURSE - EXPOCRETE COLOUR: MEDIUM BEIGE - MORTAR COLOUR: BEIGE
(E4)	CONCRETE BLOCK MASONRY VENEER - EXPOCRETE COLOUR: LIGHT BEIGE - MORTAR COLOUR: BEIGE
(E5)	CONCRETE BLOCK MASONRY VENEER SOLDIER COURSE - EXPOCRETE COLOUR: LIGHT BEIGE - MORTAR COLOUR: BEIGE
(E6)	COMPOSITE METAL PANEL SYSTEM - COLOUR: ANODIZED ALUMINUM
(E7)	RESERVED
(E8)	PRE-FINISHED METAL CLADDING - LONGBOARD - COLOUR:
(E9)	SOLID PHENOLIC PANELS - TRESPA - COLOUR: WHITE
(E10)	SOLID PHENOLIC PANELS - TRESPA - COLOUR: COPPER RED METALLIC
(E11)	SOLID PHENOLIC PANELS - TRESPA - COLOUR: BLUE
(E12)	PRE-FINISHED METAL PANEL SYSTEM JOINT LINE
(E13)	PRE-FINISHED METAL FLASHING. REFER TO GENERAL NOTES - EXTERIOR ELEVATIONS FOR FLASHING COLOUR
(E14)	ALUMINUM CURTAIN WALL SYSTEM - REFER TO DRAWING A0.07 GLAZING SCHEDULE - FRAME COLOUR: ANODIZED ALUMINUM
(E15)	ALUMINUM ENTRANCE DOORS IN ALUMINUM CURTAIN WALL SYSTEM - REFER TO DRAWING A0.03 GLAZING SCHEDULE - FRAME COLOUR: ANODIZED ALUMINUM
(E16)	INSULATED HOLLOW METAL DOOR AND PRESSED STEEL FRAME - REFER TO DOOR SCHEDULE ON DRAWING A0.02. FINISH DOOR & FRAME: CHARCOAL
(E17)	INSULATED HOLLOW METAL DOOR AND PRESSED STEEL FRAME - REFER TO DOOR SCHEDULE ON DRAWING A0.02. FINISH DOOR & FRAME: MEDIUM BEIGE
(E18)	INSULATED HOLLOW METAL DOOR AND PRESSED STEEL FRAME - REFER TO DOOR SCHEDULE ON DRAWING A0.02. FINISH DOOR & FRAME: BLUE
(E19)	PROPOSED LOCATION FOR BUILDING SIGNAGE - LOGO & INDIVIDUAL PIN MOUNTED LETTERING N.I.C.
(E20)	PRE-MANUFACTURED ALUMINUM LADDER c/w PLATFORM & ROOFSIDE RETURN SECURED TO WALL - REFER TO SPECIFICATIONS
(E21)	SIAMESE CONNECTION - REFER TO MECHANICAL DRAWINGS
(E22)	GAS METER LOCATION - REFER TO MECHANICAL DRAWINGS
(E23)	EXTERIOR LIGHT FIXTURE - REFER TO ELECTRICAL DRAWINGS
(E24)	FIRE DEPARTMENT LOCK BOX LOCATION

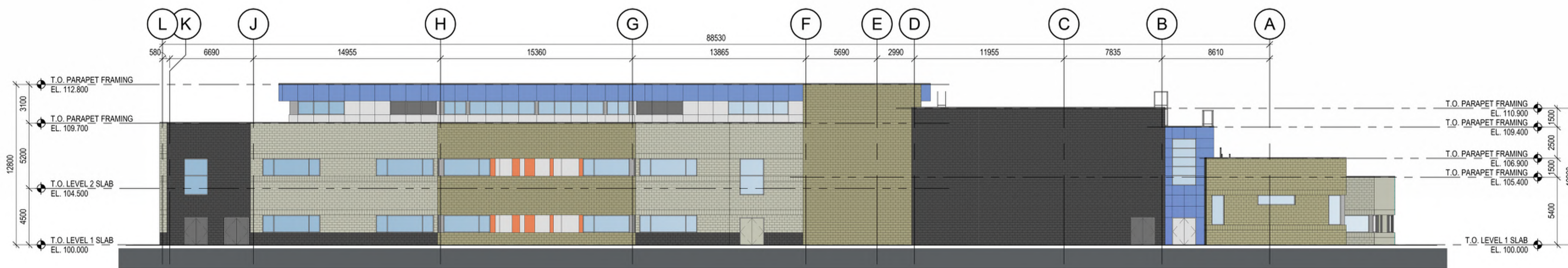
EXTERIOR ELEVATIONS



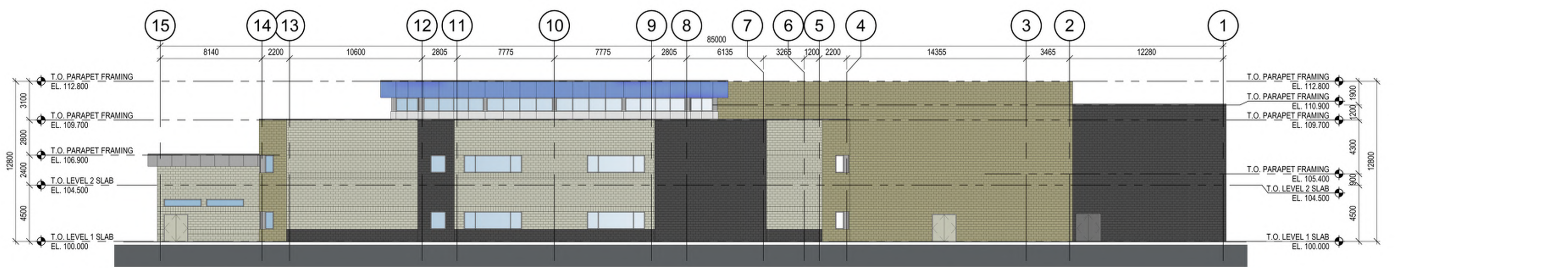
1 DP - South Elevation
SCALE: 1:200



2 DP - West Elevation
SCALE: 1:200



3 DP - North Elevation
SCALE: 1:200

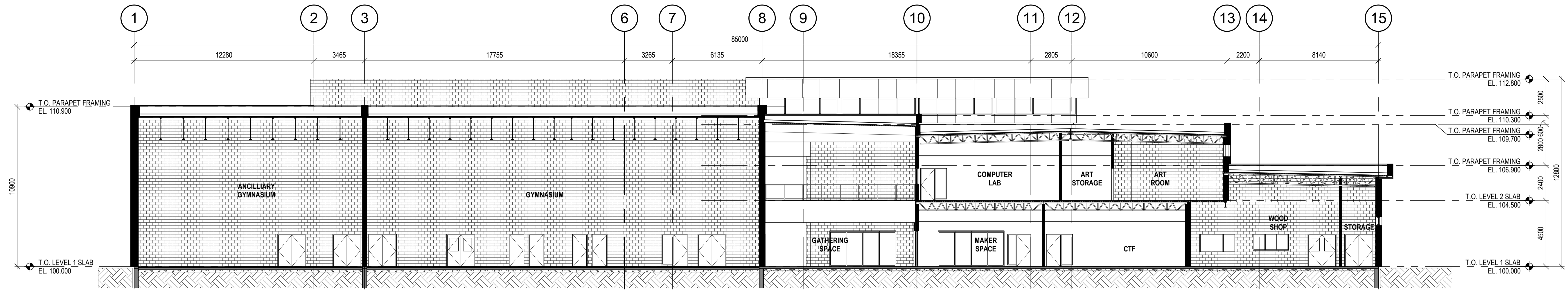


4 DP - East Elevation
SCALE: 1:200

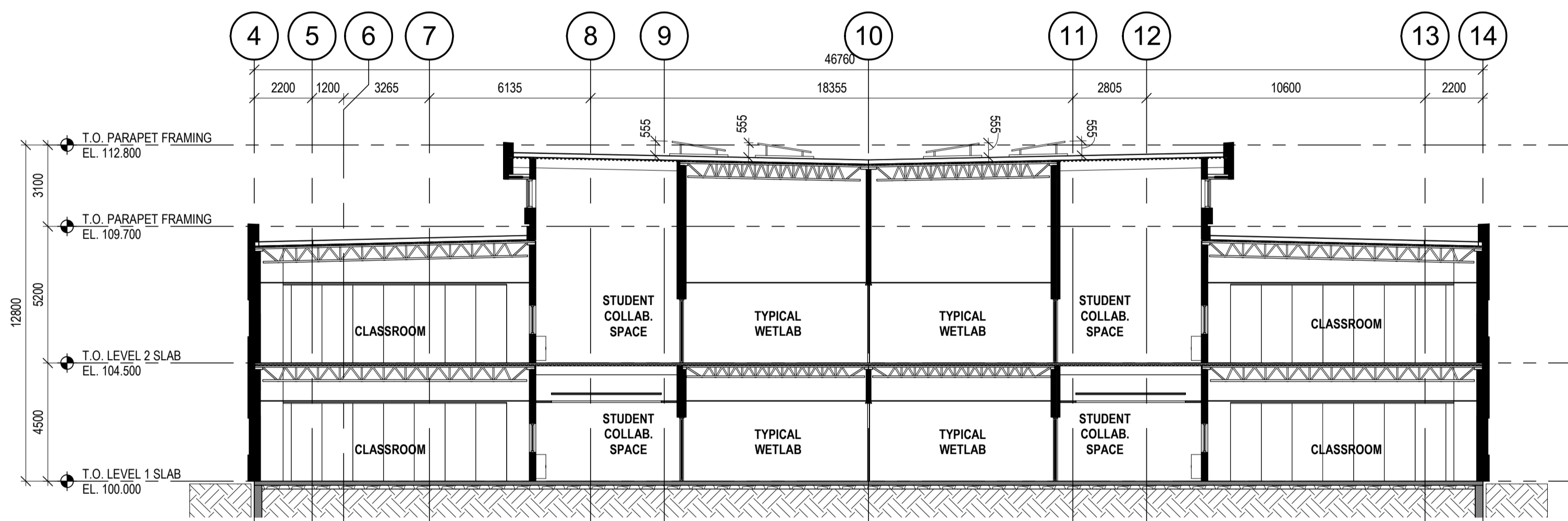
EXTERIOR ELEVATIONS



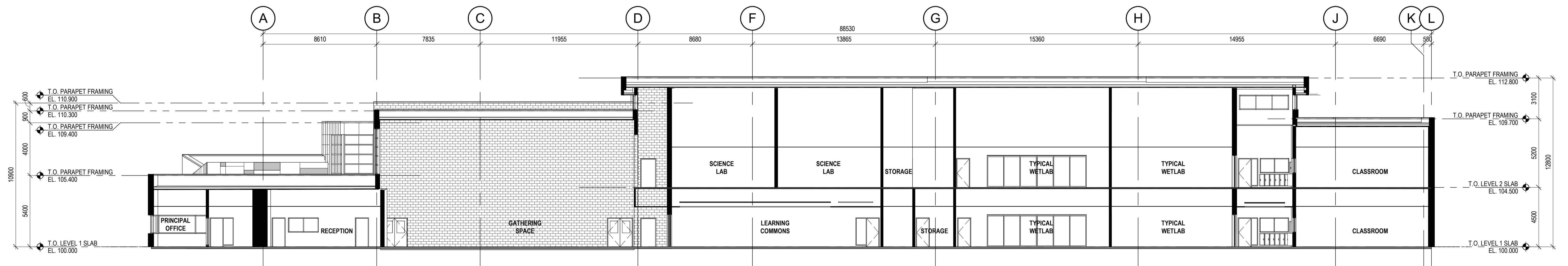
RENDERINGS
DP4.02



1 DP - Section #1
DP5.00 SCALE: 1:150



2 DP - Section #2
DP5.00 SCALE: 1:150



3 DP - Section #3
DP5.00 SCALE: 1:150

OVERALL BUILDING SECTIONS