



# James Fowler High School

## Modernization Update and Future Program Planning

learning | **as unique** | as every student



## Introductions

- Lynn Ferguson, Trustee wards 3 & 4
- Darlene Unruh, Area Director
- Anne Trombley, Manager of Planning
- Robert Ashley, Design Manager
- Mike Nelson, System Principal Area 2
- Don Middleton, Learning Specialist
- Ryan Emond, Learning Specialist
- Melissa Malcolm, Communications Advisor
- Vanessa Bellardinelli, Colliers Project Leaders – Project Manager

(KEITH)– Welcome, thank you to everyone for being here tonight. I am happy to have a chance to talk about the modernization happening at James Fowler High School. Allow me to introduce Lynn Ferguson as she has been a part of our community for a number of years. Would like to welcome Darlene and she is a big supporter of our programming. Welcome to Anne Trombly, Planning; Robert Ashely, Design Manager; Mike Nelson, Area II System Principal; Don Middleton, & Ryan Emond, Specialists; Melissa Malcolm, Communications, Vanessa Bellardinelli, Colliers and Allison Field, Assistant Principal

## Agenda

- What is a Modernization?
- Modernization Focus
- Capital Plan Request
- Market Conditions and Project Funding
- Construction Phasing Plan
- Timeline
- High School Success/ Career and Technology Studies
- CTS at James Fowler High
- Courses Offered
- Principal's Vision
- Planning Information
- High School Engagement

(DARLENE)

(Darlene) – Thank you Keith. We are very happy to be here and to talk with you about the modernization that is finally underway at James Fowler.

We have a short PowerPoint presentation and then we will do our best to answer your questions and address any concerns.

We'll start by sharing with you information on the modernization and construction plan then talk about Career and Technology Studies at Fowler, the enrolment projections for your area and how Fowler will continue to be a great place to learn through Keith's vision for the school.

Lastly we will share our plans for the next phase of school engagement.

## What is a Modernization?

A school modernization is required due to the age and conditions of the building. It is also needed to support changes to curriculum.

It may include:

- improvements to learning spaces
- creating new learning spaces
- removal of hazardous materials
- upgrading aspects of the facility to meet current building code standards
- renovating and upgrading finishes and fixtures
- creating barrier-free access when possible

(ROBERT)

In terms of James Fowler High there are many areas of the school that are in need of updating. The school was constructed in 1962. In 1997, there were some minor modernizations to the drama room/stage, administration area, student centre, library and a few instructional spaces. Other small additions to the building (including an elevator) were made in 1998.



## Modernization Focus

- Part of the CBE's planned strategy to address the Career and Technology curriculum
- Focus on Career and Technology program spaces

(ROBERT)

A major focus of our high school modernizations is the ability for schools to offer Career and Technology Studies courses within a student's geographic area. These courses often require highly specialized spaces and equipment, which makes them very costly to build and update. We simply can't offer every course at every high school, but students have the opportunity to take CTS courses through other high schools in their area.

The benefit is that CTS courses help students transition from high school into the work-world or into post-secondary education.

## Capital Plan Request

- In 2010, James Fowler High School was identified as a priority for modernization on the CBE Three-Year Capital Plan
- In October 2014, the Province committed to the immediate planning and development of design scope of the high school modernization
- In March 2015, the Province committed to fully fund the modernization

### **(ANNE)**

The CBE annually submits a three-year school capital plan to Alberta Education, which is our request for new school and modernization funding.

This list is prioritized.



## Market Conditions and Project Funding

### Market Conditions

- Based on the weak economy we expected bids to be lower

### Project Funding

- Modernization funding is provided by the Alberta Government
- Funding received is making Fowler a 21<sup>st</sup> century learning environment



## (ROBERT)

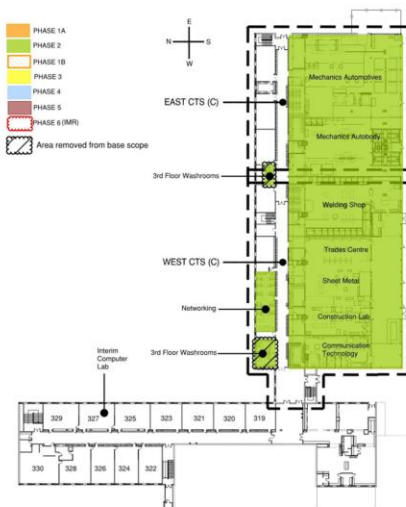
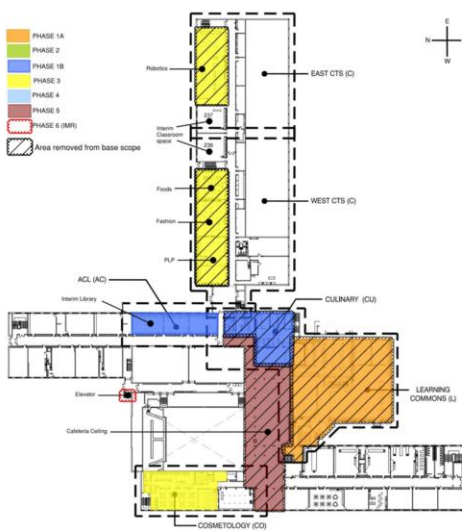
- Construction prices have not fallen greatly
- Weak Canadian currency resulted in cost increase

We had long discussions about the best use of the funding right now. Unfortunately, we will not be renovating the locker and change rooms or making changes in the student centre and main entry. We know these projects are a priority for students and parents and we are committed to seeing these projects come to fruition. We are anticipating being able to deliver on these projects by 2020 using infrastructure, maintenance Renewal (IMR) funding pending any emergent issues that should arise in our schools.

We can't always include everything that we would like to in a modernization. Our priority is on student learning. The Alberta Government has been clear that modernization funding must be spent on CTS and Learning spaces.

Modernization is like home renovation you don't know what is behind the walls until they are removed and sometimes you find issues that you didn't expect. This uncertainty makes modernization projects less desirable for contractors.

# Construction Phasing Plan





## Timeline

Area	Start	Completed
Learning commons	Dec. 2016	Aug. 2017
Arts-Centred Learning	May 2017	Jan. 2018
Heavy Shops, washrooms, wireless	Mar. 2017	Jan. 2018
Light Shops	Feb. 2018	Aug. 2018
Elevator	May 2017	Aug. 2018

### (VANESSA)

#### **Phase 1A (December 2016 - August 2017)**

Abatement work in the library

#### **Phase 2 (March 2017 - January 2018)**

CTS wing (heavy shops)

3<sup>rd</sup> floor washrooms

Networking

Sprinklers

#### **Phase 1B (May 2017 - January 2018)**

ACL

#### **Phase 3 (February 2018 - August 2018)**

Light shops (robotics, food and fashion)

Cosmetology

Sprinklers

#### **Phase 4 (May 2017 - August 2018)**

Elevator



## High School Success and Career and Technology Studies

“What I enjoyed the most was getting the hands on experience, instead of just being told what to do and told what happens, I actually got to do”

– *Student reflection*

“This program is preparing my son for a field that he is excited in entering. This isn’t just a job for him. It’s his career.”

– *Parent reflection*



“Giving them the opportunity to see what future lies beyond high school is a valuable opportunity that helps re-engage in high school with new hope for the future.”

– *Guidance counsellor reflection*

(DON)

At the heart of high school success is the opportunity for students to not only explore their interests and talents but to extend their understanding when they discover an area of passion. You will hear from Keith about the rich opportunities available at Fowler - from academics, to the arts, to athletics and careers. CTS extends the high school experience beyond the classroom. Our goal at the CBE is to offer students access to a wide variety of opportunities according to their interests and passions and ensure that these programs are accessible to students in each area of the city.

## CTS at James Fowler High

- The modernization aligns with CBE's vision for high school success and more students completing high school
- Providing a variety of CTS courses gives students enhanced opportunities to learn and explore areas of interest to them that may also be part of their future career path

[CTS Pathways offered at CBE High Schools](#)

(DON/KEITH)

James Fowler is comprehensive high school which has a rich array of Career and Technology Studies opportunities in these CTS clusters:

BIT: Information Processing, Computing Science, Enterprise and Innovation, Financial Management, Marketing & Management and Networking

HRH: Cosmetology\*, Esthetics, Foods\*, Leadership, Legal Studies, Med Studies, Sports Medicine and Sports Performance

MDC: Communication Technology, Design Studies and Fashion Studies

TMT: Autobody, Auto Service, Construction, Electro-technologies, Logistics, and Welding

Multi: Building Trades, Film Studies and Robotics

## Courses Offered 2017-18

Course	Semester 1 (2017)	Semester 2 (2018)
Autobody		✓
Automotive Mechanics		✓
Building Construction		✓
Welding		✓
Comm Tech/Film Studies	✓	✓
Design Studies		✓
Robotics/Pre-Engineering	✓	
Cosmetology	✓	
Culinary Foods	✓	✓
Domestic Foods	✓	✓
Fashion	✓	✓
Supply Chain/Logistics	✓	
Management/Marketing	✓	
Financial Management	✓	
Computing Science	✓	✓
Art	✓	✓
Medical Studies		✓
Sports Performance	✓	✓
Sports Medicine	✓	✓
French	✓	
Spanish	✓	✓
German		✓
Mandarin		✓

(KEITH)

Students have access to all programming at James Fowler as we are not letting the modernization effect programming choices. All courses are still available even with a lower student population. We have strategically planned our student timetable with the modernization phasing schedule at the centre of our decision making. This will ensure requested courses and programs are available for students.



## A Vibrant Learning Community

- Offering all courses, including Advanced Placement
- All Teachers teaching different courses
- Focus on STEAM (Science, Technology, Engineering, Arts, Mathematics) approach to education
- Interdisciplinary approach to Teaching and Learning
- Students leading their learning

(KEITH)

The exciting part of being in a smaller high school is that each teacher is now teaching different courses and not just one subject. We are focusing on STEAM education and looking at new ways to help students make connections in their learning of all subjects. We are working hard at growing our numbers at JFHS and word of mouth is very important. Thank you to parents for all of your hard work in marketing our school. We take advantage of every chance we get to talk about the amazing opportunities we offer at our school.

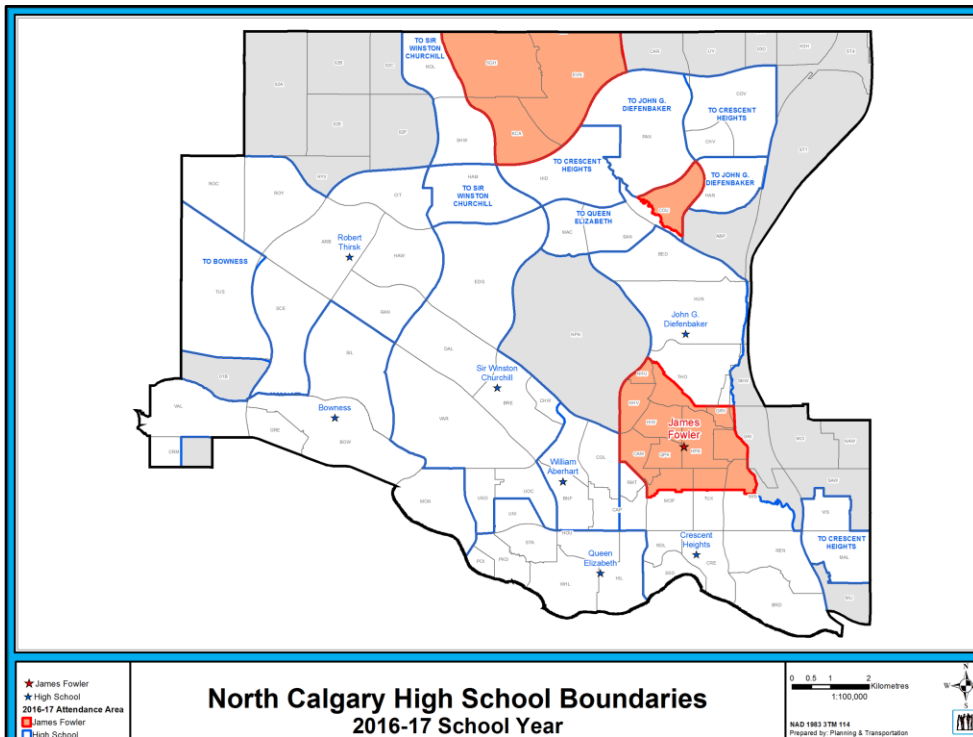


## Encouraging Student Enrolment

- Showcasing how the school is a vibrant learning community
  - Marketing of all programs and learning community at open houses, parent nights, PTIs, grade nine tours
  - Continually developing the Arts-Centred Learning Program
  - Continuing to offer all courses, including Advanced Placement
  - Promoting the advantages of a small high school learning community

(KEITH)

We speak about offering all of our courses even at a lower population and are promoting a smaller high school as it is an advantage that we have a lower student population. It is a luxury and an advantage to be in this position. All of the strategies that we are working on currently, and because of all of JFHS options, interdisciplinary approaches and partnerships, we hope to attract many new students to JFHS.



(ANNE)

What communities are designated to Fowler.

This map outlines the communities in orange. These communities immediately surrounding the school are established communities – Country Hills is also designated to the school and is considered to be an established community. Established communities are those that are fully built-out with no new vacant sites for home construction. There are also three new/developing communities designated to the school: Sage Hill, Kincora and Evanston.

## Information on Designated New and Developing Communities

Area	New and Developing Community	2015 Population	Projected Population	Housing Units Occupied	Housing Units Projected	Build-Out % of
II	Evanston	12,883	18,550	4,057	6,114	66%
II	Kincora	5,974	12,100	1,828	4,579	40%
II	Sage Hill	4,578	22,150	1,595	9,266	17%
	<b>Total</b>	<b>23,435</b>	<b>52,800</b>	<b>7,480</b>	<b>19,959</b>	

(ANNE)

This table provides information on the future size of the new and developing communities currently designated to James Fowler. Once they are fully built out these communities will have a projected combined population of just over 52,000 people. When CBE plans for new high schools, we typically need a new high school for every 60,000 to 70,000 population. Eventually there will be a new high school closer to where these three communities are located. In the interim, students are designated to James Fowler and enrolment will increase as the communities grow and approach full build-out.



## September 30, 2016 Enrolment

<b>JAMES FOWLER HIGH</b>				
Provincial Capacity = 1953				
Instructional Space Available = 1835				
Enrolment on September 30, 2016				
	GR10	GR11	GR12	TOTAL
<b>Regular Program - Designated Established Communities</b>				
Cambrian Heights	2		1	3
Country Hills	3	2	2	7
Greenview				0
Highland Park	8	9	10	27
Highwood	3	1	7	11
Mount Pleasant	1	3	1	5
North Haven/North Haven Upper	4	5	5	14
Thornciffe	6	3	4	13
Tuxedo Park	3	3	1	7
Winston Heights/Mountview	1			1
<b>Sub-Total (Designated Established Communities)</b>	<b>31</b>	<b>26</b>	<b>31</b>	<b>88</b>
<b>Regular Program - Designated New &amp; Developing Communities</b>				
Evenston	15	16	12	43
Kincora	7	8	4	19
Sage Hill	7	4		11
<b>Sub-Total (Designated New &amp; Developing Communities)</b>	<b>29</b>	<b>28</b>	<b>16</b>	<b>73</b>
<b>Total - Regular Program Designated Students</b>	<b>60</b>	<b>54</b>	<b>47</b>	<b>161</b>
Regular Program - Nelson Mandela Boundary	12	49	264	325
Regular Program - Out of Attendance Area	24	30	72	126
<b>Complex Learning Classes</b>				
System LEAD class	17	10	16	43
System Class (PLP)	11	11	13	35
<b>Total Regular Program</b>	<b>124</b>	<b>154</b>	<b>412</b>	<b>690</b>
<b>Arts-Centred Learning</b>	<b>74</b>	<b>96</b>	<b>102</b>	<b>272</b>
<b>Total Enrolment</b>	<b>198</b>	<b>250</b>	<b>514</b>	<b>962</b>

(ANNE)

I have broken out the enrolment for James Fowler from September 2016. There were 88 students from the established communities and 73 from the new and developing communities.

The number of potential Grade 10 students from the new and developing communities will increase over the next 10 years. Currently 75-100 students are eligible for GR10 will increase to 200-225 students in five to ten years from now

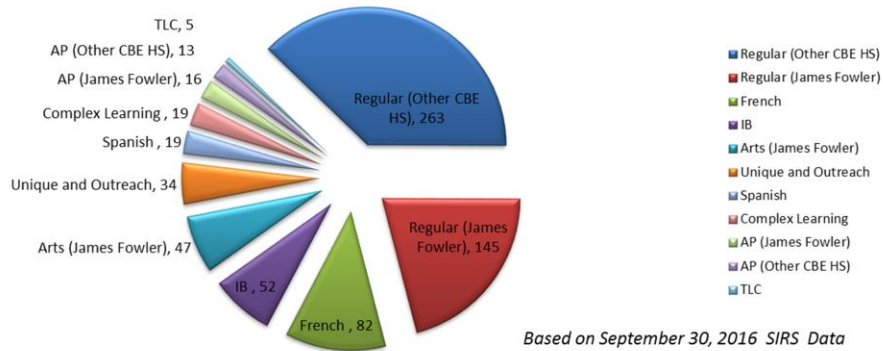
Also, over the next 10 years, potential student GR10 students from the established communities designated to James Fowler is also increasing (currently there are 28 Grade 9 students living in the communities designated to James Fowler who would be eligible to attend Grade 10 at the school for Sept 2017 – that number will increase to 65-70 in the future.

Enrolment of students who are in the Nelson Mandela boundary is shown separately as these students are no longer designated to James Fowler once the current GR12 students graduate this June.

Enrolment in the Arts Centred Learning program has remained strong with 74 students entering GR10 this year.

## What CBE Programs/Schools are Students in the James Fowler Boundary Choosing?

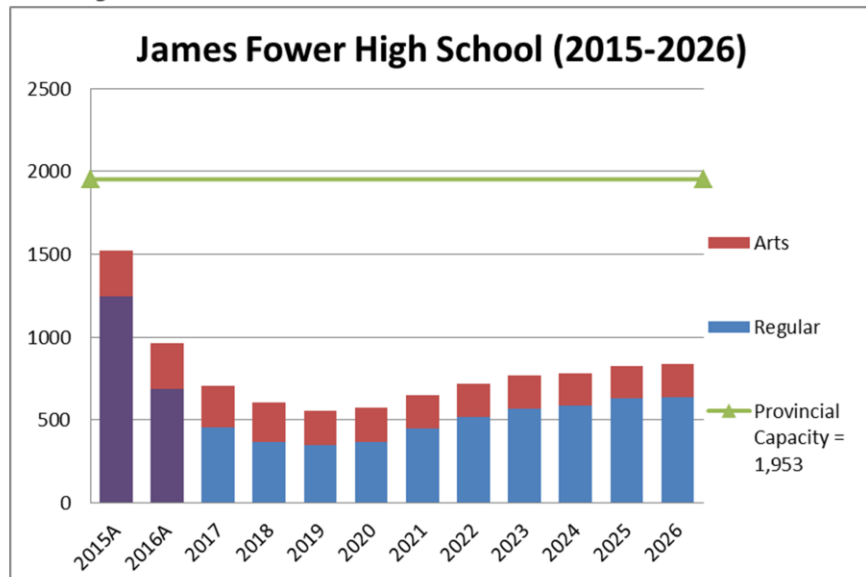
### Program Choices Made by Students Living in James Fowler Regular Program Boundary (GR10-GR12)



(ANNE)

The graph shows which programs/schools students who live within the James Fowler Attendance Area chose this year. In total, 208 of the 695 (30% chose to attend James Fowler in either the Regular program (including AP) or Arts Centred Learning)

## Projected Future Enrolment

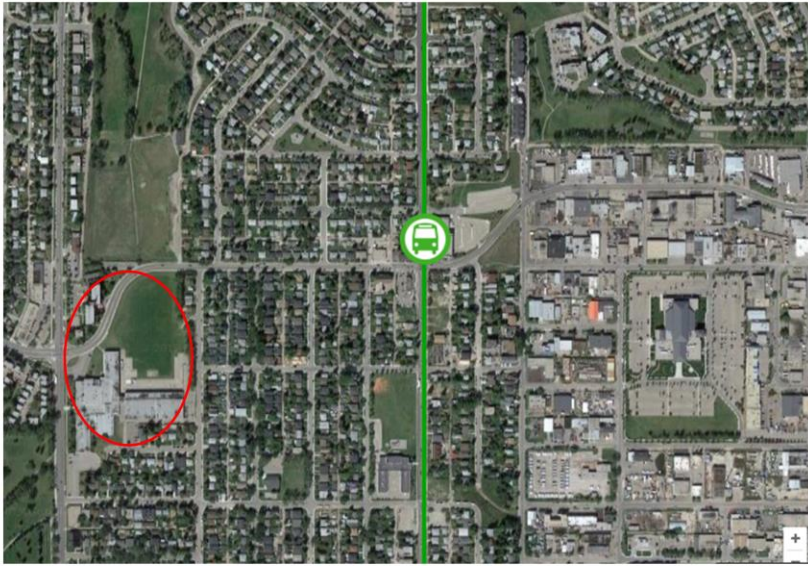


(ANNE)

This is an ideal time to do the modernization as we can meet the learning needs of Fowler students without having to displace them to other area high schools.

Over time, as the number of students living in Kincora, Evanston and Sage Hill increases, enrolment at James Fowler will increase. James Fowler has also just been identified as the designated school for two more new and developing communities in North Calgary – Livingston and Carrington.

## Future Green Line LRT Location



(ANNE)

In the future, once the green line is built, accessibility to James Fowler will be improved from many areas of the City. The school is within the 2km zone of influence identified by the City of Calgary as being walkable.

## High School Engagement

- The next phase in the CBE's impacted schools engagement will be a high school engagement
- All CBE high schools will be included in the engagement on how we can best use the space in our schools to support student learning

(DARLENE)

We are still in the early stages of planning the High School Engagement so I don't have details to share with you. However, I want you to be aware that we will be talking with our high school communities about the use of space in their schools.

The CBE will be reviewing the use of space in all our high schools and how to balance the use of space with student need. Throughout our impacted school engagement involving elementary, middle and junior high schools common themes came up for the CBE to consider related to high school including: reviewing the boundaries, adult education, designation of new communities, alternative programs and complex needs classes. Our goal is to ensure that there continues to be a vibrant high school program at James Fowler.

cbe.ab.ca



Updates on the modernization are available on the James Fowler Building and Modernizing webpage.

[cbe.ab.ca/newschools](http://cbe.ab.ca/newschools)  
(under the modernization tab)



learning | **as unique** | as every student



We will continue to provide updates under both the Modernization webpage [cbe.ab.ca/newschools](http://cbe.ab.ca/newschools), under the modernization tab, as well as on our school webpage. We are compiling 'frequently asked questions and responses' regarding the modernization and future programming at James Fowler. Please direct any additional questions directly to your principal. Questions will be collected and responses compiled and posted for the community.



## Questions?

An FAQ will be available on our website next week to address common parent questions.

learning | [as unique](#) | as every student

